



City of Grand Island

Tuesday, February 08, 2011

Council Session

Item E1

**Public Hearing Concerning Acquisition of Utility Easement - 2820
Riverside Drive - Country Club Holding Association**

Staff Contact: Gary R. Mader

Council Agenda Memo

From: Robert H. Smith, Asst. Utilities Director

Meeting: February 8, 2011

Subject: Acquisition of Utility Easement – 2820 Riverside Drive –
Country Club Holding Association

Item #'s: E-1 & G-4

Presenter(s): Gary R. Mader, Utilities Director

Background

Nebraska State Law requires that acquisition of property must be approved by City Council. The Utilities Department needs to acquire an easement relative to the property of Country Club Holding Association (Riverside Golf Club), located at 2820 Riverside Drive, in the City of Grand Island, Hall County, in order to have access to install, upgrade, maintain, and repair power appurtenances, including lines and transformers.

Discussion

The expansion of the Clubhouse and the subsequent request to increase the amount of power available prompted an examination of the easements for the various transformers and electrical lines serving all of the golf course.

In reviewing the records of easements on the property, it was found that there are not documented easements covering the existing utility installations. In order to accurately document the utility easement layout for the entire Riverside Country Club, including those required for the expanded clubhouse, it is recommended that easements for utility installations serving the entire property be acquired at this time. A map of the easements to serve the property is attached for reference.

Alternatives

It appears that the Council has the following alternatives concerning the issue at hand. The Council may:

1. Make a motion to approve
2. Refer the issue to a Committee
3. Postpone the issue to future date
4. Take no action on the issue

Recommendation

City Administration recommends that the Council approve the resolution for the acquisition of the easements for one dollar (\$1.00).

Sample Motion

Move to approve acquisition of the Utility Easement.

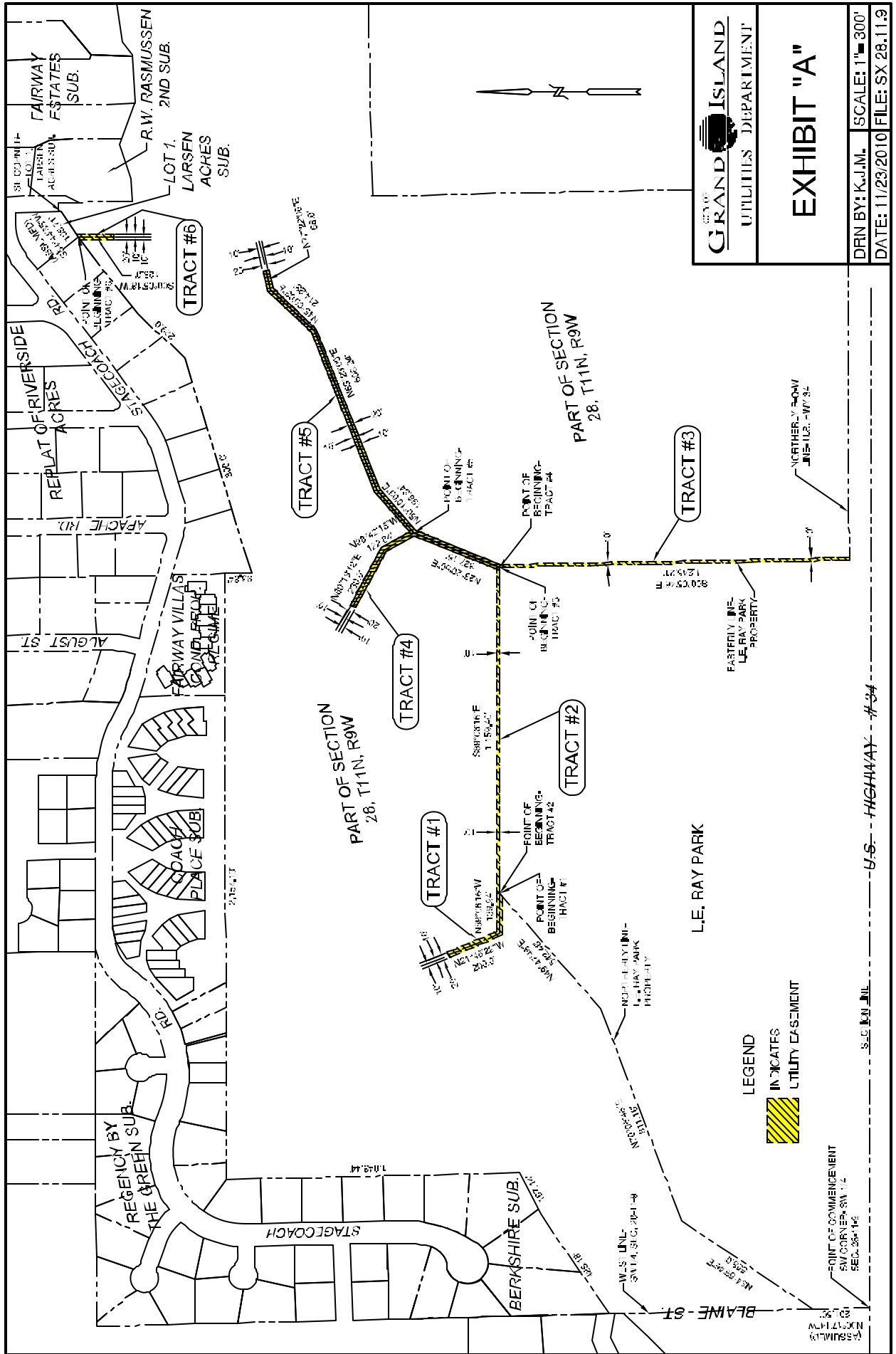


EXHIBIT "A"

DRN BY: K.J.M. SCALE: 1" = 300'
 DATE: 11/23/2010 FILE: SX 28.11.9

LEGEND
 INDICATES UTILITY EASEMENT

POINT OF COMMENCEMENT
 SW CORNER SW 1/4
 SEC. 28, T11N, R9W

U.S. HIGHWAY #34

S-C-J-M-J-L

ASSUMING
 NORTH