



# City of Grand Island

Tuesday, September 14, 2010

Council Session

## Item G7

**#2010-241 - Approving Acquisition of Utility Easement and Agreement for Temporary Construction Easement - North of Old Potash Highway, and east of Engleman Road - Robin & Barbara Irvine**

*This item relates to the aforementioned Public Hearing Item E-5.*

Staff Contact: Gary R. Mader

## RESOLUTION 2010-241

WHEREAS, the City Water Department periodically retains the services of a consultant to review the City's water system for deficiencies and to assist in planning future requirements; and

WHEREAS, in 2001 CH2MHill provided a Master Plan for the water system that determined areas of deficiency; and

WHEREAS, major improvements made over the last nine years were associated with the City's primary water source, the Platte River Wellfield, or reservoirs and pumping stations; and

WHEREAS, it is the recommendation of the Utilities Department that the planning focus shift to the water distribution system; and

WHEREAS, the 2010 – 2011 Budget includes funding for a major trunk line expansion on the west side of the City, to be installed on the north side of Old Potash Highway and the east side of Engleman Road (Water Main District 456T), that would improve water flow from the Rogers Reservoir and pumping station, increase supply redundancy for the northwest area of the City, and provide availability of City water to an area in the early stages of development; and

WHEREAS, Engleman Road is a main route from the northwest area of the City for points west and south, and Old Potash Highway is designed to carry heavy truck traffic required to move a large percentage of the solid waste haul from the City; and

WHEREAS, in order to keep these main roads opened during construction, it is proposed that a temporary construction easement be acquired adjacent to the existing Right-of-Way; and

WHEREAS, shifting the pipe route to the north of the existing Potash Highway Right-of-Way to avoid the right turn lane, and to minimize the impact to traffic flow at that busy intersection requires the acquisition of a 12' wide permanent easement from the adjacent agricultural property; and

WHEREAS, a professional appraisal was completed on the property of Robin and Barbara Irvine, from which the planned easements are needed; and

WHEREAS, an agreement with the property owners concerning price for the easements could not be reached; and

WHEREAS, Utility and Legal staff concur that proceeding with condemnation is the appropriate action at this time.

NOW, THEREFORE, BE IT RESOLVED BY THE MAYOR AND COUNCIL OF THE CITY OF GRAND ISLAND, NEBRASKA, that acquisition of the required utility easements on the property of Robin and Barbara Irvine be achieved by proceeding with condemnation.

- - -

Adopted by the City Council of the City of Grand Island, Nebraska, September 14, 2010.

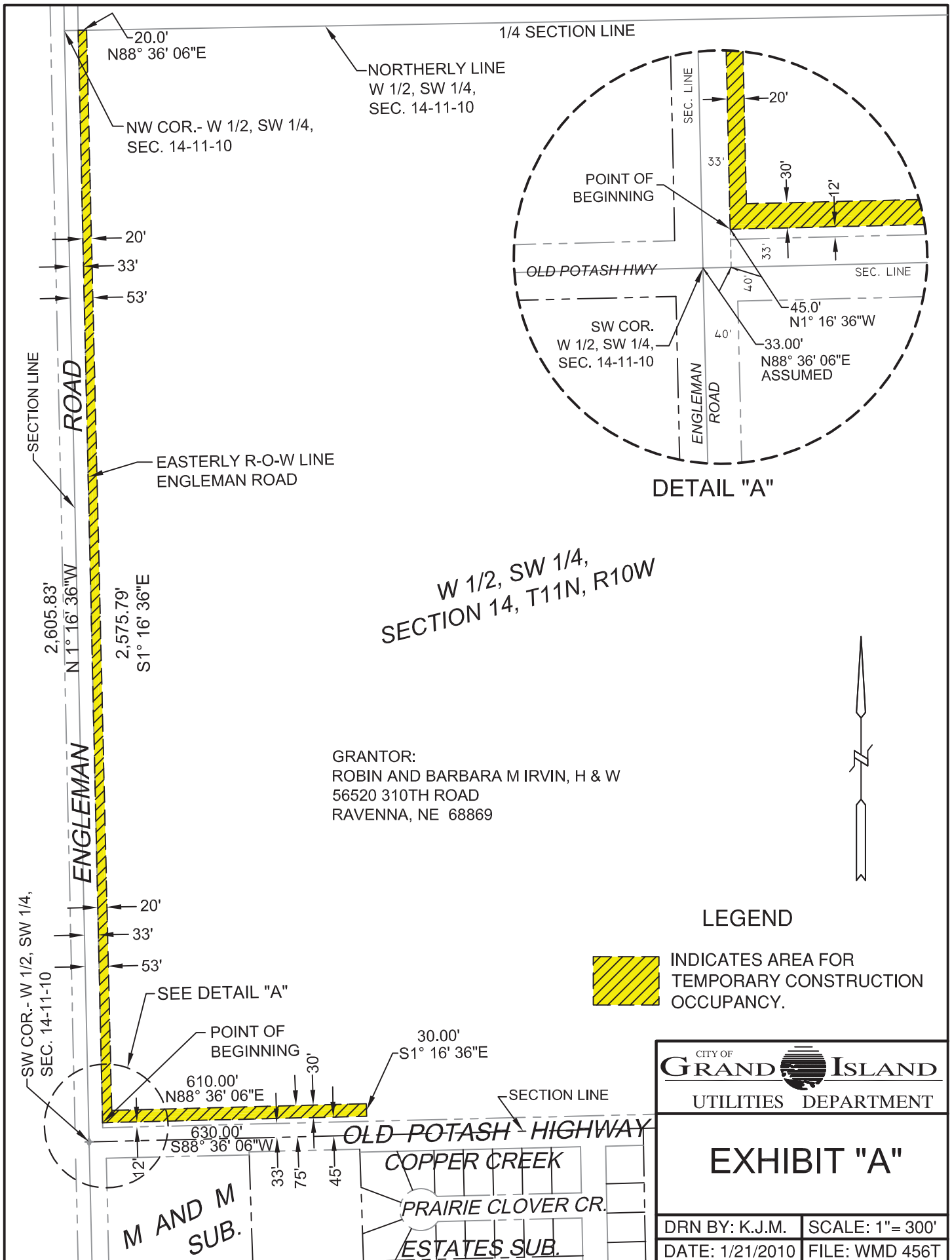
---

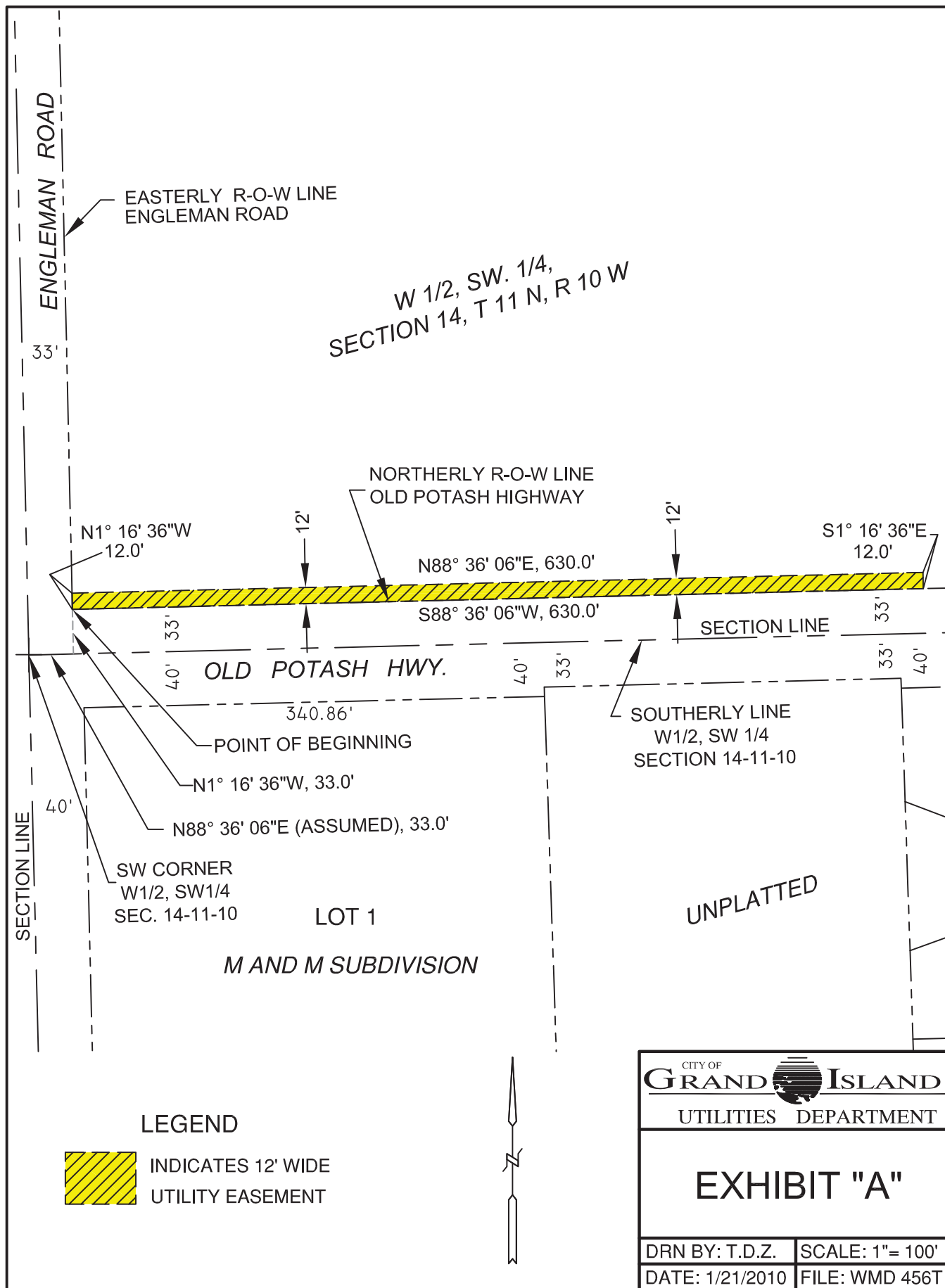
Margaret Hornady, Mayor

Attest:


---

RaNae Edwards, City Clerk





### LEGEND

 INDICATES 12' WIDE  
UTILITY EASEMENT

 CITY OF <b>GRAND ISLAND</b> UTILITIES DEPARTMENT	
<b>EXHIBIT "A"</b>	
DRN BY: T.D.Z.	SCALE: 1" = 100'
DATE: 1/21/2010	FILE: WMD 456T

