



City of Grand Island

Tuesday, September 14, 2010

Council Session

Item G12

#2010-246 - Approving Amending Resolution 2010-213 for Acquisition of Sanitary Sewer Easement in Lot One (1) of McGovern Subdivision - 2530 N Diers Avenue (James E. & Carole M. Kimbrough)

This item relates to the aforementioned Public Hearing Item E-10.

Staff Contact: Steven P. Riehle, Public Works Director

RESOLUTION 2010-246

WHEREAS, a public sanitary sewer easement is required by the City of Grand Island, from James E. & Carole M. Kimbrough, to construct and maintain a private sanitary sewer service within McGovern Subdivision; and

WHEREAS, Resolution 2010-213 was approved by the Grand Island City Council on August 10, 2010; and

WHEREAS, the north-south section of the public sanitary easement has been shifted 45' eastward to facilitate construction of the private sanitary sewer service; and

WHEREAS, public hearings were held on August 10, 2010 and September 14, 2010, for the purpose of discussing the proposed acquisition of an easement comprised of a part of Lot One (1) McGovern Subdivision, in the City of Grand Island, Nebraska, more particularly described as follows:

BEGINNING AT THE SOUTHWEST CORNER OF LOT ONE (1) McGOVERN SUBDIVISION, THENCE EASTERLY OF THE SOUTH LINE OF SAID LOT ONE (1) FOR A DISTANCE OF 210', THENCE NORTHERLY ON A LINE TO A POINT 65' EAST OF THE SOUTHWEST CORNER OF LOT 2 McGOVERN SUBDIVISION, THENCE WEST ON THE SOUTH LINE OF LOT 2 A DISTANCE OF 20', THENCE SOUTH ON A LINE PERPENDICULAR TO THE SOUTH LINE OF LOT 2 McGOVERN SUBDIVISION TO A POINT 20' NORTH OF THE SOUTH LINE OF LOT 2 McGOVERN SUBDIVISION, THENCE WEST ON A LINE 20' NORTH OF AND PARALLEL TO THE SOUTH LINE OF LOT 1 TO A POINT ON THE WEST LINE OF LOT 1, THENCE SOUTH ON THE WEST LINE OF LOT 1 McGOVERN SUBDIVISION FOR A DISTANCE OF 20' TO THE POINT OF BEGINNING.

NOW, THEREFORE, BE IT RESOLVED BY THE MAYOR AND COUNCIL OF THE CITY OF GRAND ISLAND, NEBRASKA, that the City of Grand Island be, and hereby is, authorized to acquire a public sanitary sewer easement from James E. & Carole M. Kimbrough, on the above-described tract of land.

- - -

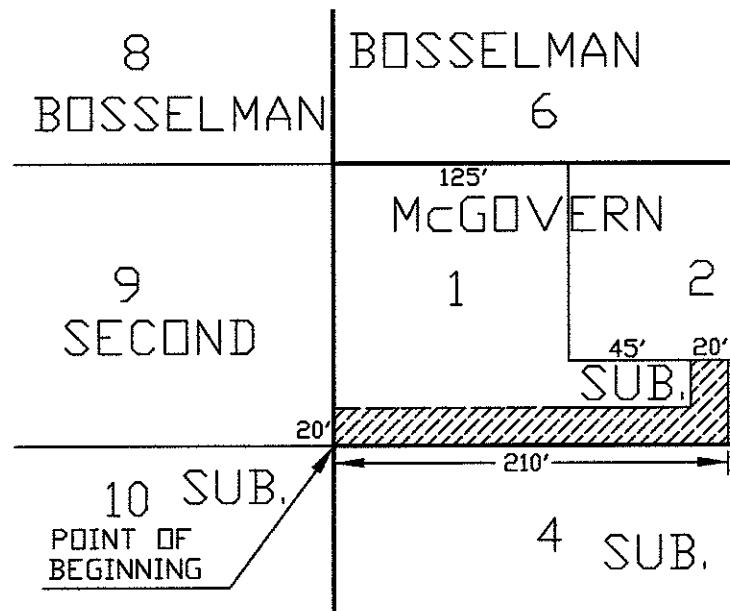
Adopted by the City Council of the City of Grand Island, Nebraska, September 14, 2010.

Margaret Hornady, Mayor

Attest:

RaNae Edwards, City Clerk

Approved as to Form	<input checked="" type="checkbox"/>	_____
September 10, 2010	<input checked="" type="checkbox"/>	City Attorney



 20' SANITARY SEWER EASEMENT

ACQUIRED FROM:
JAMES E. & CAROLE M. KIMBROUGH



EXHIBIT "A"

CITY OF
GRAND ISLAND
PUBLIC WORKS DEPARTMENT

DATE: 8-16-10
DRN BY: P.E.S.
SCALE: 1"=100'

PLAT TO ACCOMPANY
SANITARY SEWER
EASEMENT