



City of Grand Island

Tuesday, August 10, 2010

Council Session

Item G8

#2010-213 - Approving Acquisition of Sanitary Sewer Utilities Easement in Lot One (1) of McGovern Subdivision - 2530 N. Diers Avenue (James E. & Carole M. Kimbrough)

This item relates to the aforementioned Public Hearing Item E-2.

Staff Contact: Steven P. Riehle, Public Works Director

RESOLUTION 2010-213

WHEREAS, a public sanitary sewer easement is required by the City of Grand Island, from James E. & Carole M. Kimbrough, to construct and maintain the utilities within McGovern Subdivision; and

WHEREAS, a public hearing was held on August 10, 2010, for the purpose of discussing the proposed acquisition of an easement comprised of a part of Lot One (1) McGovern Subdivision, in the City of Grand Island, Nebraska, more particularly described as follows:

BEGINNING AT THE SOUTHWEST CORNER OF LOT ONE (1) McGOVERN SUBDIVISION, THENCE EASTERLY OF THE SOUTH LINE OF SAID LOT ONE (1) FOR A DISTANCE OF 145', THENCE NORTHERLY ON A LINE TO A POINT ON THE SOUTH LINE OF LOT TWO (2) McGOVERN SUBDIVISION, THENCE WEST ON THE SOUTH LINE OF LOT TWO (2) McGOVERN SUBDIVISION FOR A DISTANCE OF 20' TO THE SOUTHWEST CORNER OF LOT TWO (2) McGOVERN SUBDIVISION, THENCE SOUTHERLY ON A LINE BEING AN EXTENSION OF THE WEST LINE OF LOT TWO (2) McGOVERN SUBDIVISION TO A POINT 20' NORTH OF THE SOUTH LINE OF LOT ONE (1) McGOVERN SUBDIVISION, THENCE WEST ON A LINE 20' NORTH OF AND PARALLEL TO THE SOUTH LINE OF LOT ONE (1) McGOVERN SUBDIVISION TO THE WEST LINE OF LOT ONE (1) McGOVERN SUBDIVISION, THENCE SOUTHERLY ON THE WEST LINE OF McGOVERN SUBDIVISION FOR A DISTANCE OF 20' TO THE POINT OF BEGINNING.

NOW, THEREFORE, BE IT RESOLVED BY THE MAYOR AND COUNCIL OF THE CITY OF GRAND ISLAND, NEBRASKA, that the City of Grand Island be, and hereby is, authorized to acquire a public sanitary sewer easement from James E & Carole M. Kimbrough, on the above-described tract of land.

- - -

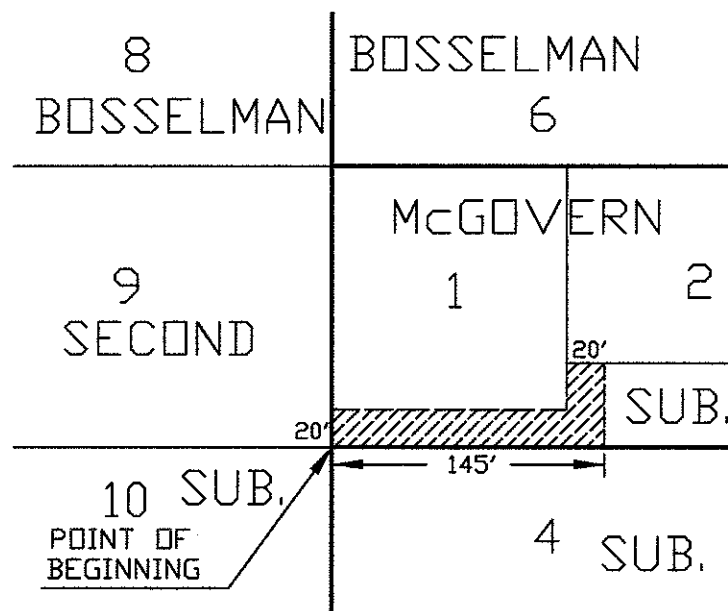
Adopted by the City Council of the City of Grand Island, Nebraska, August 10, 2010.

Margaret Hornady, Mayor

Attest:

RaNae Edwards, City Clerk

Approved as to Form	☐ _____
August 6, 2010	☐ City Attorney



 20' SANITARY SEWER EASEMENT

ACQUIRED FROM:
JAMES E. & CAROLE M. KIMBROUGH



EXHIBIT "A"

CITY OF
GRAND ISLAND
PUBLIC WORKS DEPARTMENT

DATE: 7-27-10
DRN BY: P.E.S.
SCALE: 1"=100'

PLAT TO ACCOMPANY
SANITARY SEWER
EASEMENT