



# **City of Grand Island**

**Tuesday, August 10, 2010**

**Council Session**

## **Item E2**

**Public Hearing on Acquisition of Sanitary Sewer Easement in Lot One (1) of McGovern Subdivision – 2530 N Diers Avenue (James E. & Carole M. Kimbrough)**

**Staff Contact: Steven P. Riehle, Public Works Director**

# **Council Agenda Memo**

**From:** Steven P. Riehle, Public Works Director

**Meeting:** August 10, 2010

**Subject:** Public Hearing on Acquisition of Sanitary Sewer Easement in Lot One (1) of McGovern Subdivision – 2530 N Diers Avenue (James E. & Carole M. Kimbrough)

**Item #'s:** E-2 & G-8

**Presenter(s):** Steven P. Riehle, Public Works Director

## **Background**

Nebraska State Statutes stipulate that the acquisition of property requires a public hearing be conducted with the acquisition approved by the City Council. A public Sanitary Sewer Easement is needed in Lot One (1) of McGovern Subdivision to accommodate a private sanitary sewer service. The easement will allow for the construction, operation, maintenance, extension, repair, replacement, and removal of the private sanitary sewer service within the easement.

## **Discussion**

The new easement will be twenty (20') feet wide. The property at 2536 North Diers Avenue is currently served by a private septic tank and leach field system and would like to connect to the City's sanitary sewer system. This easement will allow the property at 2536 North Diers Avenue access to the public sanitary sewer system.

## **Alternatives**

It appears that the Council has the following alternatives concerning the issue at hand. The Council may:

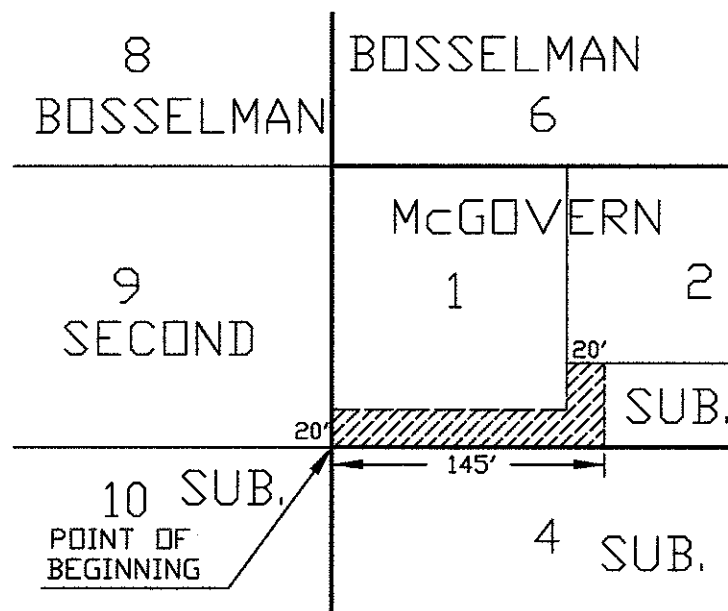
1. Move to approve
2. Refer the issue to a Committee
3. Postpone the issue to future date
4. Take no action on the issue

## **Recommendation**

City Administration recommends that the Council conduct a Public Hearing and approve acquisition of the Easement.

## **Sample Motion**

Move to approve the acquisition of the Easement.



 20' SANITARY SEWER EASEMENT

ACQUIRED FROM:  
JAMES E. & CAROLE M. KIMBROUGH



EXHIBIT "A"

CITY OF  
**GRAND ISLAND**  
PUBLIC WORKS DEPARTMENT

DATE: 7-27-10  
DRN BY: P.E.S.  
SCALE: 1"=100'

PLAT TO ACCOMPANY  
SANITARY SEWER  
EASEMENT