



City of Grand Island

Tuesday, July 27, 2010

Council Session

Item E1

Public Hearing on Acquisition of Utility Easement - Between One R and White Cloud Roads and between North and Engleman Roads - George and Sherril Albin

Staff Contact: Gary R. Mader

Council Agenda Memo

From: Gary R. Mader, Utilities Director
Dale Shotkoski, City Attorney

Meeting: July 27, 2010

Subject: Acquisition of Utility Easement – Between One R and White Cloud Roads and between North and Engleman Roads – George and Sherril Albin

Item #'s: E-1 & G-9

Presenter(s): Gary R. Mader, Utilities Director

Background

The Electric Department has electric distribution substations connected at various distances along a 115 kV transmission loop. The loop generally runs along the outer edge of the urban area, providing power to the substations and providing power supply redundancy by use of the looped configuration. A map of the transmission system is attached for reference. Substations reduce voltage from the 115,000 volt level to 13,800 volts for distribution to individual customers across the City. Substations “E,” located north of Swift on the east side of the loop, and “F,” located north of Menards on the west side of the loop, are the newest substations. They were placed in initial service in 2001, and completed in 2007.

Recognizing that the City is continuing to grow, that future transmission line construction will occur and that reliability improvement is always important, Substations “E” and “F” were constructed with provisions to accept additional 115 kV transmission regional interconnections. In the long range plan of the Electric Department, these substations were designed for new transmission interconnections to meet future growth. The Utilities Department is currently in the process of acquiring easements to provide for the construction of an additional 115 kV transmission interconnection to the north of the City.

Discussion

Easement negotiations are completed for a tract of property owned by George and Sherril Albin, located between One R and White Cloud Roads and between North and Engleman Roads, in Hall County. A map of the proposed easement is attached. The negotiated price of the easement is \$2,458.63

Alternatives

It appears that the Council has the following alternatives concerning the issue at hand. The Council may:

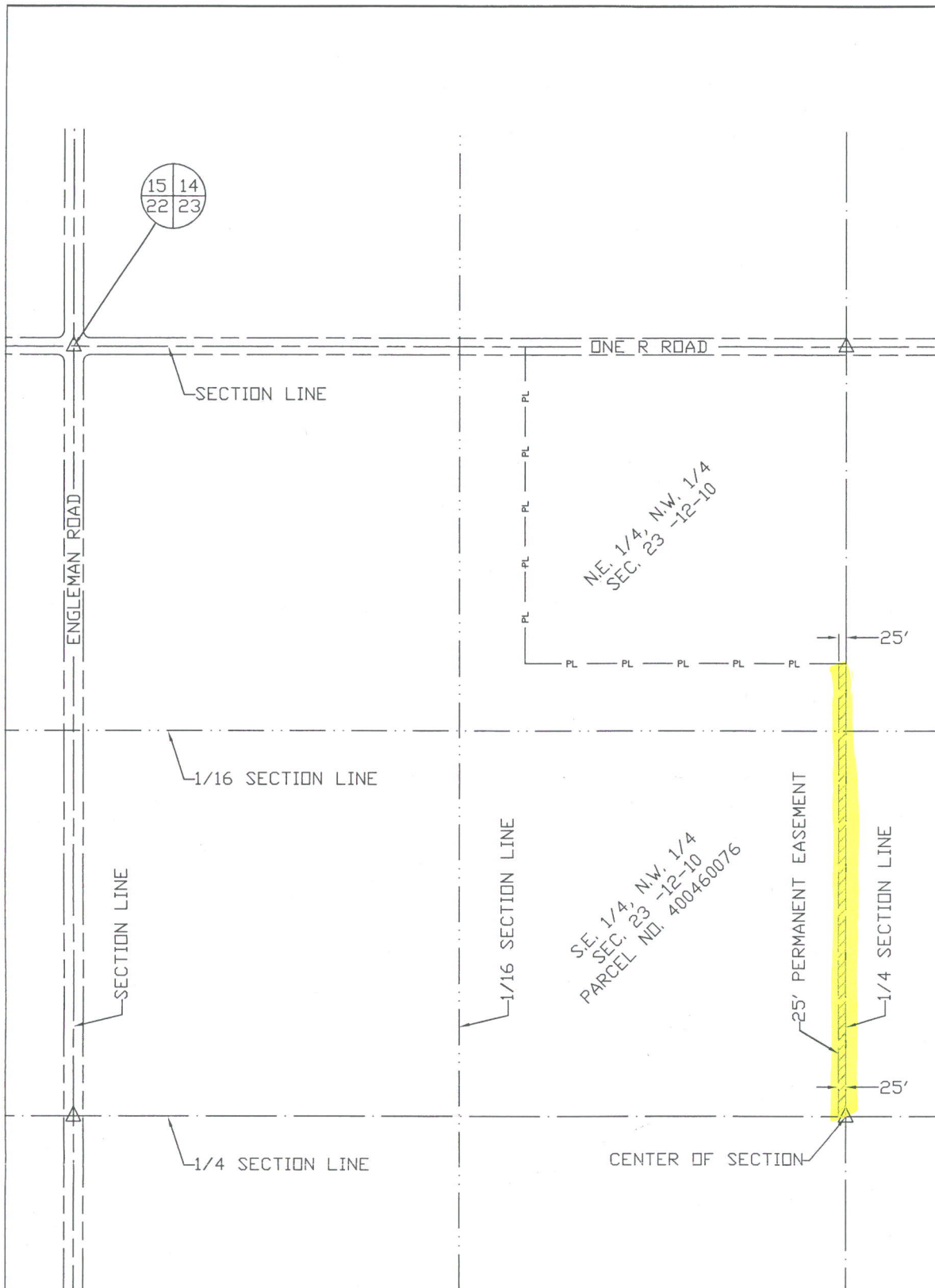
1. Make a motion to approve
2. Refer the issue to a Committee
3. Postpone the issue to future date
4. Take no action on the issue

Recommendation

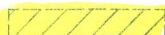
City Administration recommends that the Council approve the resolution for the acquisition of the easement for Two Thousand Four Hundred Fifty-Eight and 63/100 Dollars (\$2,458.63).

Sample Motion

Mocw to approve acquisition of the Utility Easement.



LEGEND

- SECTION LINE
- 1/4 SEC. LINE
- 1/16 SEC. LINE
- ROAD
- PL — PROPERTY LINE
-  EASEMENT

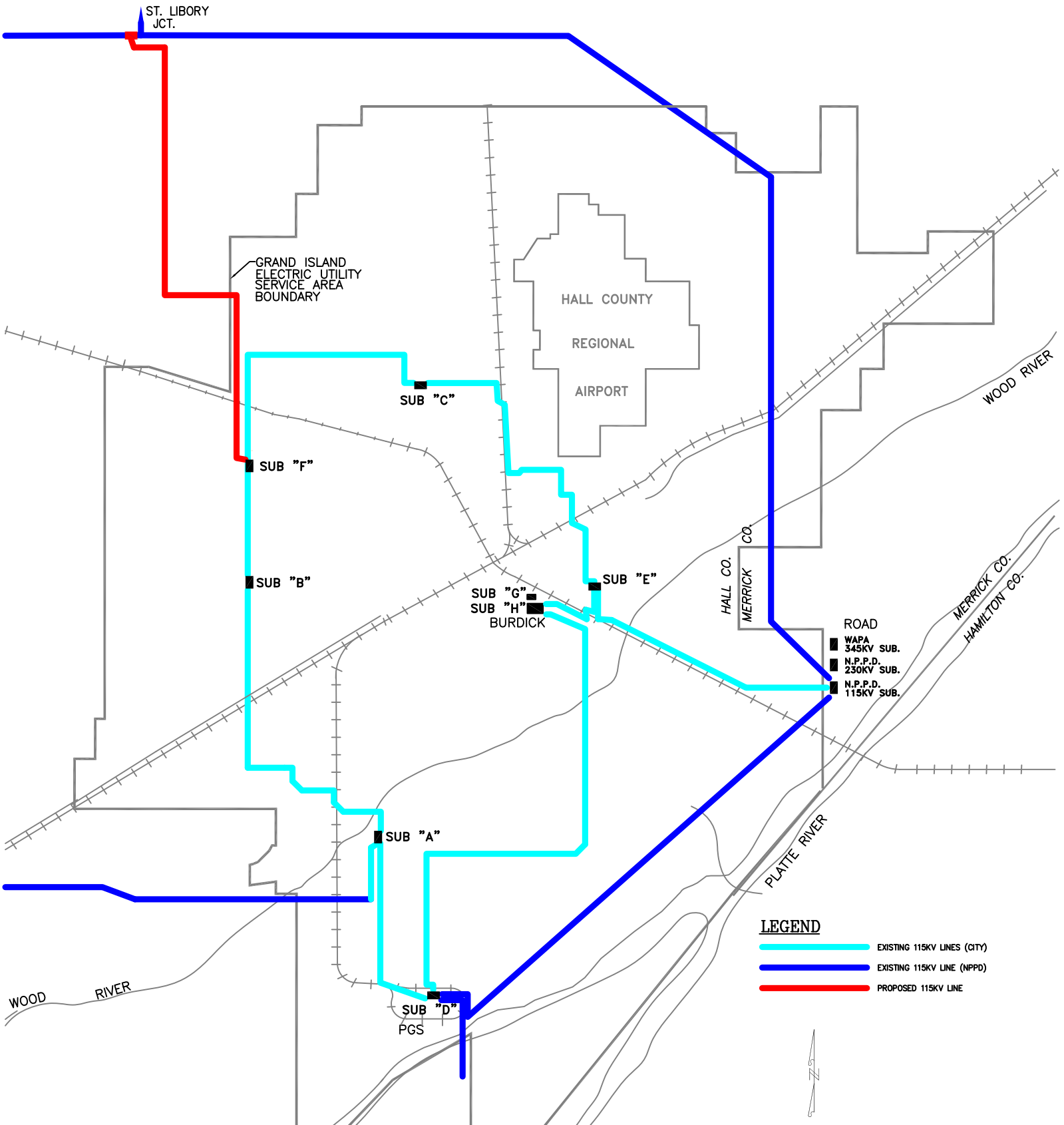


CITY OF
GRAND ISLAND
UTILITIES DEPARTMENT

EXHIBIT "A"

DRN BY: A.C.H. SCALE: 1" = 400'

DATE: 11/09/2009 # ALBIN



LEGEND

- EXISTING 115KV LINES (CITY)
- EXISTING 115KV LINE (NPPD)
- PROPOSED 115KV LINE

