



City of Grand Island

Tuesday, July 13, 2010

Council Session

Item E8

Public Hearing on Acquisition of Utility Easement - 438 Industrial Lane, North of Old U.S. Highway 30 - L & P Investments

Staff Contact: Gary R. Mader

Council Agenda Memo

From: Robert H. Smith, Asst. Utilities Director

Meeting: July 13, 2010

Subject: Acquisition of Utility Easement – 438 Industrial Lane –
L & P Investments

Item #'s: E-8 & G-6

Presenter(s): Gary R. Mader, Utilities Director

Background

Nebraska State Law requires that acquisition of property must be approved by City Council. The Utilities Department needs to acquire an easement relative to the property of L & P Investments, LLC, located along the front of 438 Industrial Lane, north of Old U.S. Highway 30, in the City Of Grand Island, Hall County, in order to have access to install, upgrade, maintain, and repair power appurtenances, including lines and transformers.

Discussion

L & P Investments is constructing a new building on Lot Three (3), Commercial Industrial Park Third Subdivision. To provide electricity to that building, it is necessary to locate a high voltage junction box in the new easement. The curve of Industrial Lane and other utilities prevents the location of the junction box in the existing public right-of-way. All other electrical conduit and cable will be located in the existing utility easement on the south side of the access road.

Alternatives

It appears that the Council has the following alternatives concerning the issue at hand. The Council may:

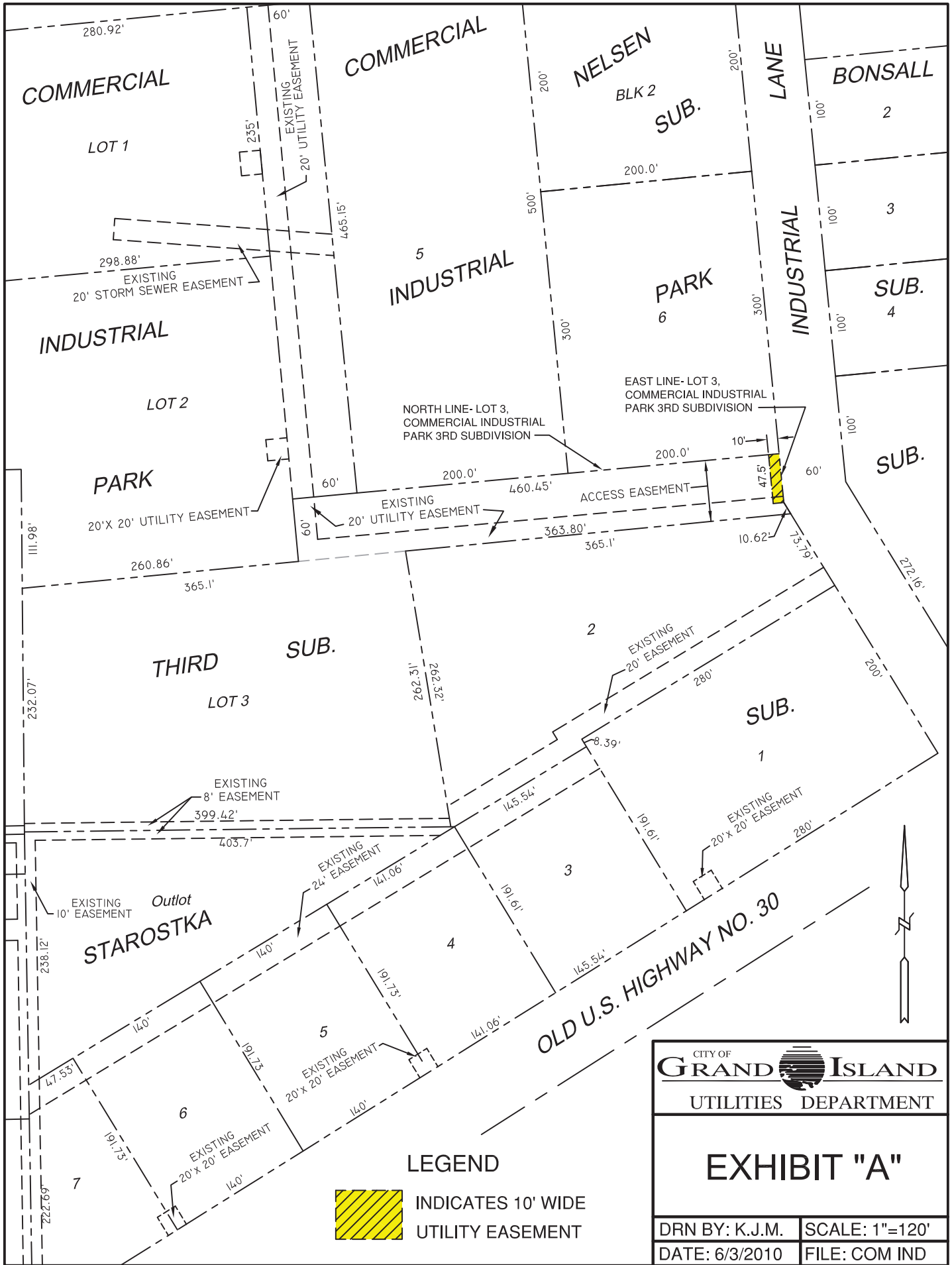
1. Make a motion to approve
2. Refer the issue to a Committee
3. Postpone the issue to future date
4. Take no action on the issue

Recommendation

City Administration recommends that the Council approve the resolution for the acquisition of the easement for one dollar (\$1.00).

Sample Motion

Move to approve acquisition of the Utility Easement.



LEGEND



INDICATES 10' WIDE
UTILITY EASEMENT

CITY OF
GRAND ISLAND
UTILITIES DEPARTMENT

EXHIBIT "A"

DRN BY: K.J.M.	SCALE: 1"=120'
DATE: 6/3/2010	FILE: COM IND