



City of Grand Island

Tuesday, December 22, 2015

Council Session

Item E-2

Public Hearing on Acquisition of Public Utility Easement for Hall County Sanitary Sewer District 2 (SID 2) [Sinha]

Council action will take place under Consent Agenda item G-8.

Staff Contact: John Collins, P.E. - Public Works Director

Council Agenda Memo

From: Terry Brown PE, Assistant Public Works Director

Meeting: December 22, 2015

Subject: Public Hearing on Acquisition of Public Utility Easement for Hall County Sanitary Sewer District 2 (SID 2) [Sinha]

Presenter(s): John Collins PE, Public Works Director

Background

At the January 4, 2011 Study Session the City Council was informed of an interest of businesses along US Highway 281 near the Interstate 80 interchange to extend City sanitary sewer to serve their property.

On January 11, 2011 City Council approved Mayor Vavricek to sign a “Letter of Intent” to the Nebraska Department of Environmental Quality declaring the City’s willingness to negotiate a public/private project with these businesses to extend City sanitary sewer south along US Highway 281.

The May 17, 2011 Study Session provided an update to the City Council regarding several meetings that were conducted between the City and the interested parties.

On September 27, 2011 City Council approved Sanitary Sewer District No. 528 in the Wildwood Subdivision. This district provided support for the sanitary sewer extension south along US Highway 281 to Interstate 80.

The sanitary sewer extension south along US Highway 281 to Interstate 80 will help to foster growth of the City towards the interstate and provide for future development.

Nebraska State Statutes stipulate that the acquisition of property requires a public hearing and approval by the City Council. Public utility easements are needed in the SID 2 project to accommodate public utilities. The easements will allow for construction, operation, maintenance, extension, repair, replacement and removal of public utilities within the easements.

This project is funded by the State Revolving Funds (SRF) Project # is C317867.

Discussion

A permanent easement is needed in this project area. All documents have been signed and returned by the property owner. Authorization of the document is contingent upon City Council approval. Following is a summary of the payment, totaling \$1,020.00, for the property.

Owner	Legal	Total
DEEPAK SINHA & SUHITA SINHA	LOCATED IN PART OF LOT TWO (2), HIGHWAY MOTEL SUBDIVISION, HALL COUNTY, NEBRASKA, AND MORE PARTICULARLY DESCRIBED AS FOLLOWS: COMMENCING AT THE SOUTHWEST CORNER OF LOT TWO (2), HIGHWAY MOTELS SUBDIVISION; THENCE ON AN ASSUMED BEARING OF N00°08'07"E, ALONG THE WEST LINE OF SAID LOT TWO (2), HIGHWAY MOTELS SUBDIVISION, A DISTANCE OF 651.71 FEET TO THE POINT OF BEGINNING; THENCE N00°08'07"E, CONTINUING ALONG THE WEST LINE OF LOT TWO (2), A DISTANCE OF 90.51 FEET; THENCE N90°00'00"E, A DISTANCE OF 24.79 FEET; THENCE S00°00'23"W A DISTANCE OF 90.51 FEET; THENCE S90°00'00"W A DISTANCE OF 24.99 FEET TO THE POINT OF BEGINNING. SAID UTILITY EASEMENT CONTAINS A CALCULATED AREA OF 2,253 SQUARE FEET OR 0.05 ACRES MORE OR LESS, AS SHOWN ON THE TRACT DRAWING DATED 07/08/14, MARKED EXHIBIT 9 ATTACHED HERETO AND INCORPORATED HEREIN BY REFERENCE.	\$1,020.00
TOTAL		\$1,020.00

Alternatives

It appears that the Council has the following alternatives concerning the issue at hand. The Council may:

1. Move to approve
2. Refer the issue to a Committee
3. Postpone the issue to future date
4. Take no action on the issue

Recommendation

City Administration recommends that the Council conduct a Public Hearing and approve acquisition of the Permanent Easement in the amount of \$1,020.00.

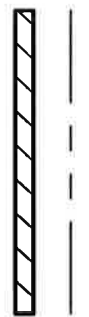
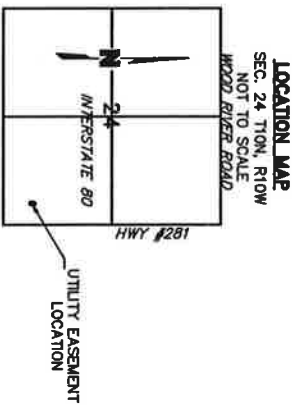
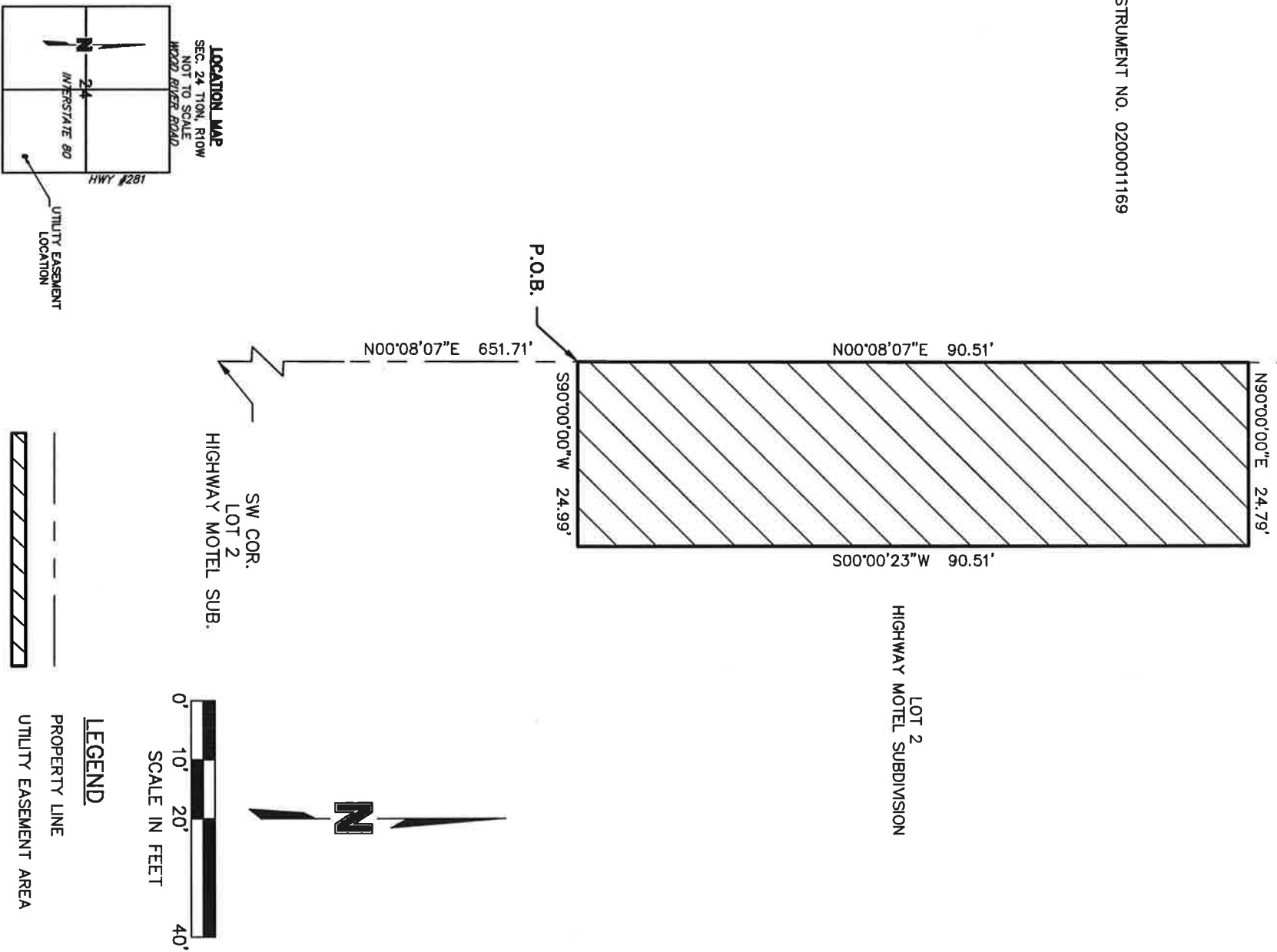
Sample Motion

Move to approve the acquisition of the easement.

UTILITY EASEMENT

HALL COUNTY, NEBRASKA

INSTRUMENT NO. 0200011169



UTILITY EASEMENT DESCRIPTION

A UTILITY EASEMENT LOCATED IN PART OF LOT 2, HIGHWAY MOTEL SUBDIVISION, HALL COUNTY, NEBRASKA, AND MORE PARTICULARLY DESCRIBED AS FOLLOWS:
 COMMENCING AT THE SOUTHWEST CORNER OF LOT 2, HIGHWAY MOTELS SUBDIVISION; THENCE ON AN ASSUMED BEARING OF N00°08'07"E, ALONG THE WEST LINE OF SAID LOT 2, HIGHWAY MOTELS SUBDIVISION, A DISTANCE OF 651.71 FEET TO THE POINT OF BEGINNING; THENCE N00°08'07"E, CONTINUING ALONG THE WEST LINE OF LOT 2, A DISTANCE OF 90.51 FEET; THENCE N90°00'00"E A DISTANCE OF 24.79 FEET; THENCE S00°00'23"W A DISTANCE OF 90.51 FEET; THENCE S90°00'00"W A DISTANCE OF 24.99 FEET TO THE POINT OF BEGINNING. SAID UTILITY EASEMENT CONTAINS A CALCULATED AREA OF 2,253 SQUARE FEET OR 0.05 ACRES MORE OR LESS.

DWG: F:\projects\012-1867\SVYO\Easements\012-1867_Sewer Easement_highway motel.dwg USER: jramirez
 DATE: Apr 01, 2015 4:21pm XREFS: 121867_pbase 0121867_xbase_SID Sewer 0110941_FP Hwy Motels

PROJECT NO: 2012-1867
 DRAWN BY: LJW
 DATE: 07/09/2014

U.S. HIGHWAY 281
UTILITY EASEMENTS

OLSSON
ASSOCIATES

201 East 2nd Street
 P.O. Box 1072
 Grand Island, NE 68902-1072
 TEL 308.394.8750
 FAX 308.384.8782

EXHIBIT
9