



City of Grand Island

Tuesday, December 22, 2015

Council Session

Item G-8

#2015-341 - Approving Acquisition of Public Utility Easement for Hall County Sanitary Sewer District 2 (SID 2) [Sinha]

This item relates to the aforementioned Public Hearing item E-2.

Staff Contact: John Collins, P.E. - Public Works Director

RESOLUTION 2015-341

WHEREAS, a public utility easement is required by the City of Grand Island, from an affected property owner for the Hall County Sanitary Sewer District 2 (SID 2), described as follows:

Owner	Legal	Total
DEEPAK SINHA & SUHITA SINHA	LOCATED IN PART OF LOT TWO (2), HIGHWAY MOTEL SUBDIVISION, HALL COUNTY, NEBRASKA, AND MORE PARTICULARLY DESCRIBED AS FOLLOWS: COMMENCING AT THE SOUTHWEST CORNER OF LOT TWO (2), HIGHWAY MOTELS SUBDIVISION; THENCE ON AN ASSUMED BEARING OF N00°08'07"E, ALONG THE WEST LINE OF SAID LOT TWO (2), HIGHWAY MOTELS SUBDIVISION, A DISTANCE OF 651.71 FEET TO THE POINT OF BEGINNING; THENCE N00°08'07"E, CONTINUING ALONG THE WEST LINE OF LOT TWO (2), A DISTANCE OF 90.51 FEET; THENCE N90°00'00"E, A DISTANCE OF 24.79 FEET; THENCE S00°00'23"W A DISTANCE OF 90.51 FEET; THENCE S90°00'00"W A DISTANCE OF 24.99 FEET TO THE POINT OF BEGINNING. SAID UTILITY EASEMENT CONTAINS A CALCULATED AREA OF 2,253 SQUARE FEET OR 0.05 ACRES MORE OR LESS, AS SHOWN ON THE TRACT DRAWING DATED 07/08/14, MARKED EXHIBIT 9 ATTACHED HERETO AND INCORPORATED HEREIN BY REFERENCE.	\$1,020.00
TOTAL		\$1,020.00

WHEREAS, an agreement for the public utility easement has been reviewed and approved by the City Legal Department.

NOW, THEREFORE, BE IT RESOLVED BY THE MAYOR AND COUNCIL OF THE CITY OF GRAND ISLAND, NEBRASKA, that the City of Grand Island be, and hereby is, authorized to enter into the agreement for the public utility easement on the above described tract of land, in the total amount of \$1,020.00.

BE IT FURTHER RESOLVED, that the Mayor is hereby authorized and directed to execute such agreement on behalf of the City of Grand Island.

- - -

Adopted by the City Council of the City of Grand Island, Nebraska, December 22, 2015.

Jeremy L. Jensen, Mayor

Attest:

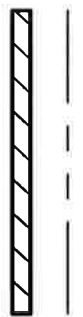
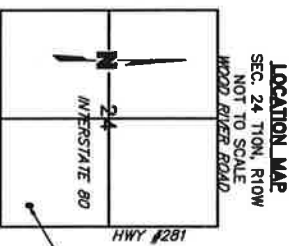
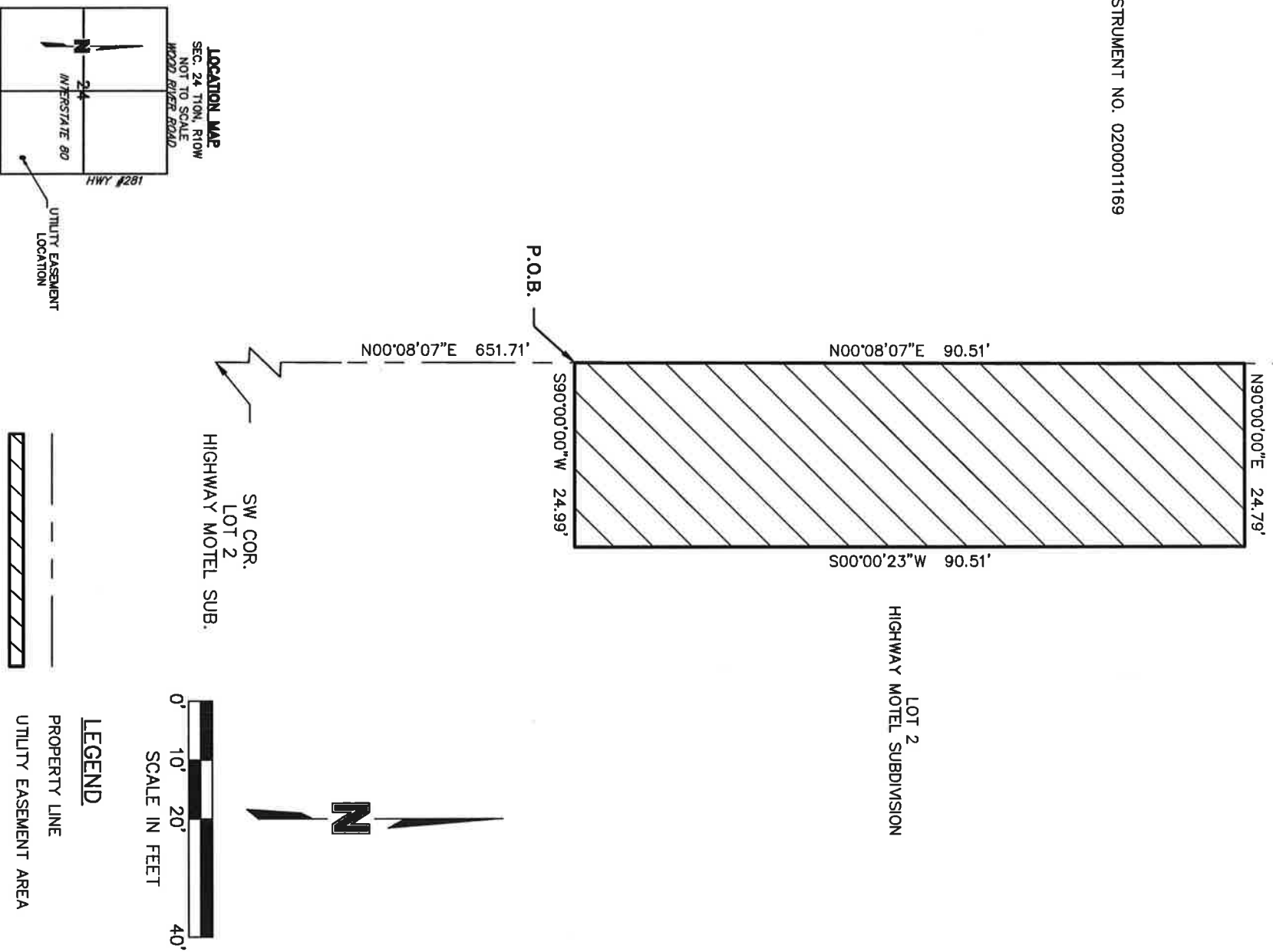
Nicki Stoltenberg
Assistant to the City Administrator

Approved as to Form ✕ _____ December 18, 2015 ✕ City Attorney
--

UTILITY EASEMENT

HALL COUNTY, NEBRASKA

INSTRUMENT NO. 0200011169



UTILITY EASEMENT DESCRIPTION

A UTILITY EASEMENT LOCATED IN PART OF LOT 2, HIGHWAY MOTEL SUBDIVISION, HALL COUNTY, NEBRASKA, AND MORE PARTICULARLY DESCRIBED AS FOLLOWS:
 COMMENCING AT THE SOUTHWEST CORNER OF LOT 2, HIGHWAY MOTELS SUBDIVISION; THENCE ON AN ASSUMED BEARING OF N00°08'07\"/>

DWG: F:\projects\012-1867\SVYO\Easements\012-1867_Sewer Easement_highway motel.dwg USER: jramirez
 DATE: Apr 01, 2015 4:21pm XREFS: 121867_pbase 0121867_xbase_SID Sewer 0110941_FP Hwy Motels

PROJECT NO: 2012-1867
 DRAWN BY: LJW
 DATE: 07/09/2014

U.S. HIGHWAY 281
UTILITY EASEMENTS



201 East 2nd Street
 P.O. Box 1072
 Grand Island, NE 68902-1072
 TEL 308.394.8750
 FAX 308.384.8782

EXHIBIT
9