



City of Grand Island

Tuesday, September 22, 2015

Council Session

Item E-4

Public Hearing on the Annual Report by the Grand Island Area Economic Development Corporation/Citizen Advisory Review Committee on the Economic Development Program Plan

Council action will take place under Resolutions item I-1.

Staff Contact: Marlan Ferguson

Council Agenda Memo

From: Marlan Ferguson, City Administrator

Meeting: September 22, 2015

Subject: Public Hearing Concerning the Annual Report by the Citizen Advisory Review Committee on the Economic Development Program Plan

Item #'s: E-4 & I-1

Presenter(s): Marlan Ferguson, City Administrator

Background

The voters of the City of Grand Island approved an economic development plan at the November 6, 2012 election. Subsequent to the election, the city has adopted an ordinance that establishes the economic development plan and a Citizen Advisory Review Committee to oversee the process of approving applications for economic development incentives. The Citizen Advisory Review Committee is required by State Statute and the Grand Island City Code to make an annual report to the City Council.

Discussion

The Citizen Advisory Review Committee has been conducting regular meetings during the last six months as required by the City Code and the Nebraska Statutes. The committee looks forward to receiving and reviewing meritorious applications for consideration in the future. The committee received the annual report from the Economic Development Corporation at its meeting of September 3, 2015 and voted to forward it on to the City Council for its review and acceptance.

Alternatives

It appears that the Council has the following alternatives concerning the issue at hand. The Council may:

1. Accept the annual report of the Citizen Advisory Review Committee.
2. Do not accept the annual report of the Citizen Advisory Review Committee.

Recommendation

City Administration recommends that the Council accept the annual report of the Citizen Advisory Review Committee.

Sample Motion

Move to accept the annual report of the Citizen Advisory Review Committee.



Grand Island Area

Economic Development Corporation

2004-2015 to date Historical Trend of LB-840



Grand Island Area
Economic
Development
Corporation

LB-840 Funds invested in Job Creation:

\$4,230,100



Jobs Created:

954



Annual Wages Created from Incentives:

\$41,223,416



2014-2015 Average Wage Per Job Created:

\$16.75



LB-840 projects

- **Rogue Manufacturing**
 - Add 12 employees
 - Expires December 2015
- **Bosselman Tank & Trailer**
 - Add 8 employees
 - Expires February 2017
- **Chief Industries**
 - Add 41 employees
 - Expires May 2017
- **GIX Logistics**
 - Add 26 employees
 - Expires June 2019

LB-840 Funding Status



Grand Island Area
Economic
Development
Corporation

LB-840 balance as of 9/1/2015	\$873,149.42
LB-840 job creation funds for Chief Industries	(\$239,000)
LB-840 job creation funds for Bosselman Tank & Trailer	(\$40,000)
LB-840 job creation funds for GIX Logistics	(\$202,800)
Ending LB-840 job creation funds	391,349.42
*Potential to bring 2 LB-840 applications to Council in 2016	

Grow Grand Island *Highlights*



Initiative	Action Item	Progress
1.1	Launch a collaborative Business Retention and Expansion outreach program that seeks to facilitate expansions and mitigate layoffs by conducting a series of site visits and survey with existing businesses in and around Grand Island.	Ongoing partnership with the Chamber of Commerce, State DED, and area businesses.
1.2 & 5.3	Launch the Grow Grand Island Export Initiative to support the development of new international trade relationships for Grand Island area manufacturers.	Work to begin in 2016
1.5	Work with neighboring communities in Central Nebraska to evaluate the potential benefits of developing regional cluster councils to address sector-specific issues and challenges that are common throughout Central Nebraska	In 2015 Mary Berlie, GIAEDC Executive Vice President, was appointed to the South Central Economic Development District Board of Directors, serving Hall County and twelve neighboring counties.

Grow Grand Island *Highlights*



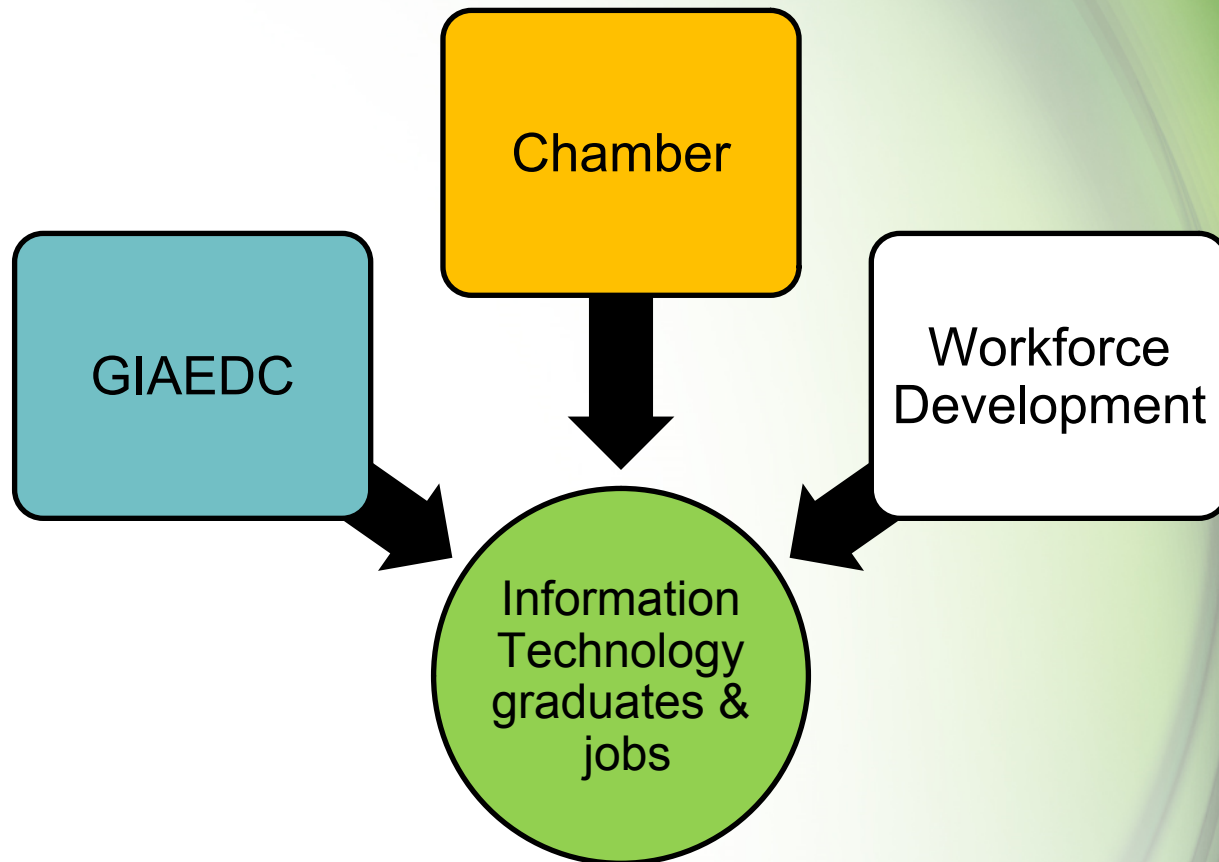
Grand Island Area
Economic
Development
Corporation

Initiative	Action Item	Progress
3.4 & 3.5	Continue to Market the Grand Island Community to both internal and external audiences, utilizing the GIAEDC website and other electronic tools.	Marketing to internal and external audiences is ongoing. New GIAEDC website launched July 2015.
3.6	Maintain strong relationships with the State DED overseeing business recruitment and business development.	State DED staff has visited Grand Island several times. Additionally, Governor Pete Ricketts met with GIAEDC and a business looking to relocated in Grand Island on September 1, 2015.
5.2	Continue to work with NDED and the City of Grand Island to develop industrial sites with updated infrastructure and is considered “shovel ready” for development.	Wildwood Development, LLC, a partnership between Chief Industries and the Central Nebraska Growth Foundation, will be working with the GIAEDC by initiating development plans for the first 40 acres in Platte Valley Industrial Park – East.

Partnerships to Connect with Target Markets



Grand Island Area
Economic
Development
Corporation





Great **people.** Better **opportunities.**

Welcome to Grand Island, Nebraska, a community focused on growth. We're home to an educated, driven workforce, direct access to transportation, and a business culture built on strong relationships.

Site Selection

Interested in Grand Island? Get to know our city and find out why our opportunities are better for your business.

[EXPLORE GRAND ISLAND](#)

Business Development

From tax incentives to available properties, learn how you can make the most of Grand Island's opportunities.

[GROW YOUR BUSINESS](#)

Incentive Packages

To reward companies for creating quality jobs, we package state and local incentives to get you the most available funds.

[FIND INCENTIVES](#)

Central location, **easy access.**

SOUTH DAKOTA

W 14th St

EDC owns 260 acres

Pat O'Neill / O'Neill Wood Resources

W Old Patash Hwy

Eugene St

© 2013 Google

[illegible]

Page 12 / 18

Development at PVIP-E



Grand Island Area
Economic
Development
Corporation





Target Markets

Competitive Sectors

Manufacturing

Agriculture
Equipment

Metalwork &
Custom
Fabrication

Food &
Beverage

Transportation & Distribution

Transportation
Services

Warehousing
& Storage

Wholesale
Trade

Travel & Tourism

Entertainment,
Culture &
Recreation

Hospitality &
Traveler
Support

--Presence of Agribusiness Activity--

Developmental Sectors

Business Support Services

Call Centers

Financial
Transaction
Processing

Corporate & Professional Services

Professional
Services

Regional
Offices &
Headquarters

Sustainable Processes & Technologies

Alternative
Energy

Repair, Reuse,
& Recycling



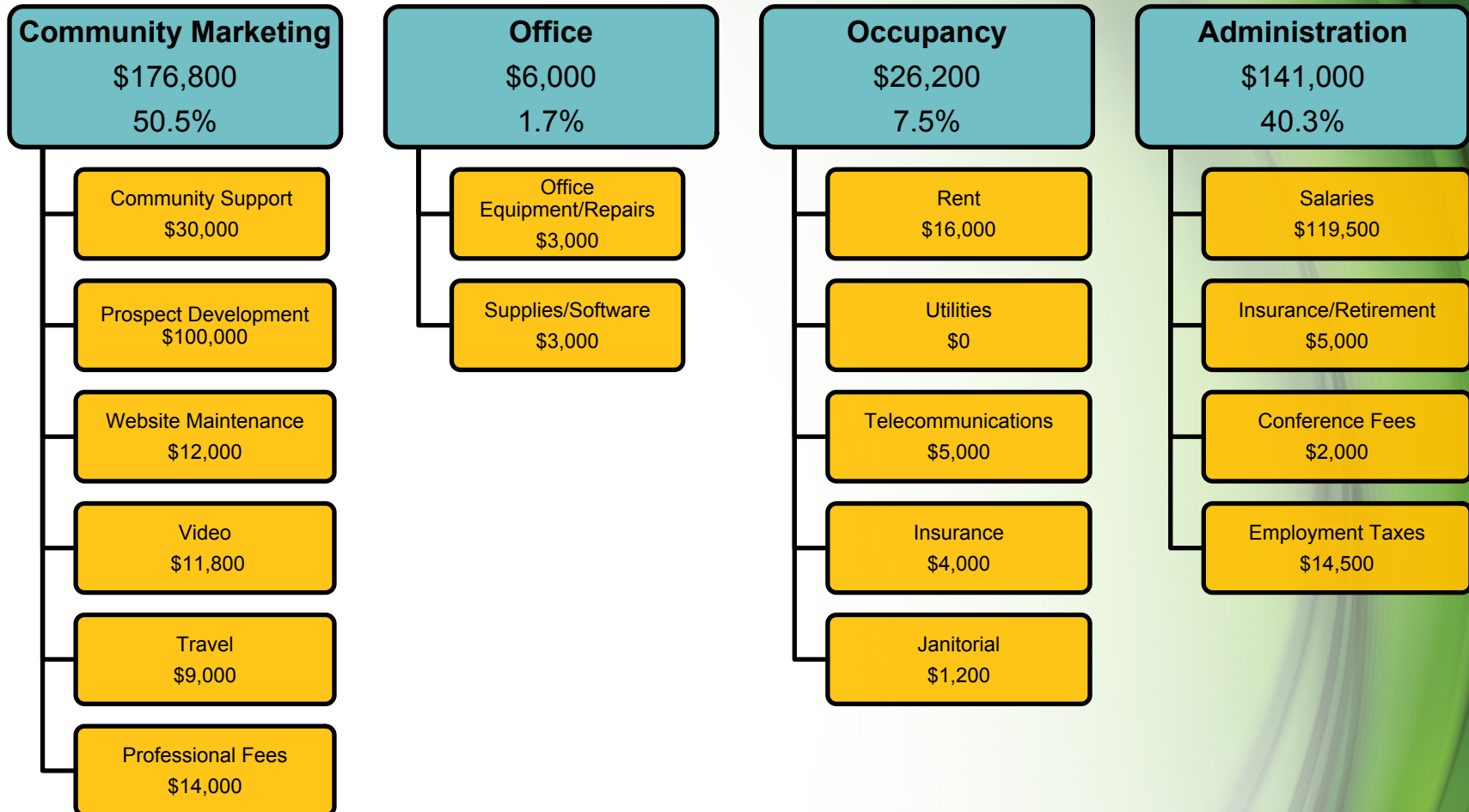
Grand Island Area
Economic
Development
Corporation

The GIAEDC staff and Board of Trustees request approval of LB -840 operating funds, \$350,000, for 2016.

Utilization of LB-840 Operating Funds



Grand Island Area
Economic
Development
Corporation





Grand Island Area
Economic
Development
Corporation

Questions?



Grand Island Area
Economic
Development
Corporation

Thank you for your support!