



City of Grand Island

Tuesday, June 23, 2015

Council Session

Item G-3

Approving Preliminary Plat for Starlite Subdivision

Staff Contact: Chad Nabity

Council Agenda Memo

From: Regional Planning Commission

Meeting: June 23, 2015

Subject: Starlite Subdivision - Preliminary Plat

Item #'s: G-3

Presenter(s): Chad Nabity AICP, Regional Planning Director

Background

This property is located south of State Street and north of 13th Street, in the City of Grand Island, in Hall County, Nebraska consisting of 69.346 acres (2 Lots).

Discussion

The Preliminary plat for Starlite Subdivision was considered by the Regional Planning Commission at the June 10, 2015 meeting.

A motion was made by Ruge and seconded by Bredthauer to approve the plat as presented.

A roll call vote was taken and the motion passed with 9 members present and voting in favor (O'Neill, Ruge, Connick, Sears, Maurer, Huisman, Heckman, Haskins and Bredthauer) and no members abstaining.

Alternatives

It appears that the Council has the following alternatives concerning the issue at hand. The Council may:

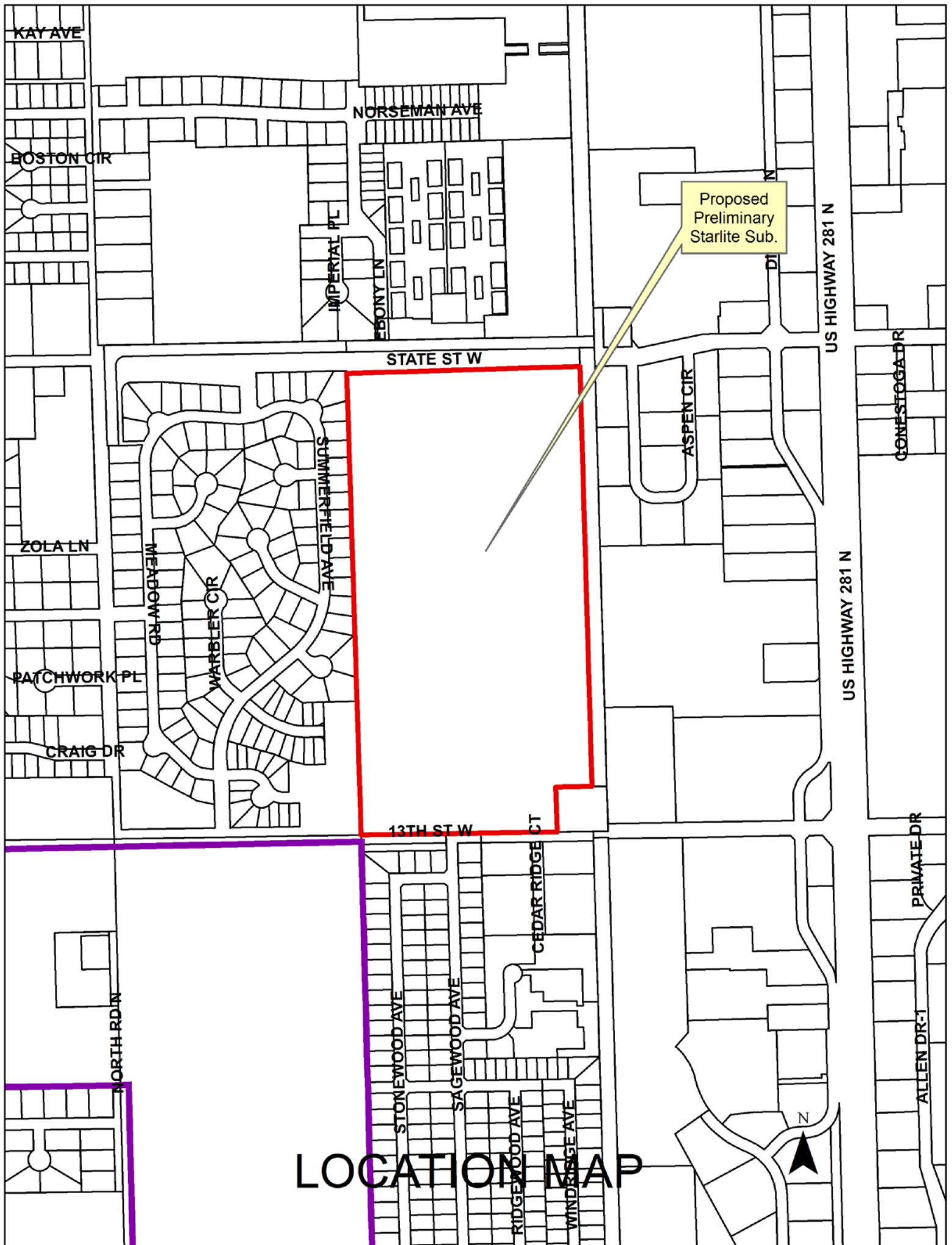
1. Move to approve
2. Refer the issue to a Committee
3. Postpone the issue to future date
4. Take no action on the issue

Recommendation

City Administration recommends that the Council approve the final plat as presented.

Sample Motion

Move to approve as recommended.



Rick Johnson
Developer/Owners

Rick Johnson
PO Box 1664
Grand Island NE 68802

To create 2 lots located south of State Street and north of 13th Street and determine the location of proposed street for future development in the City of Grand Island, in Hall County, Nebraska.

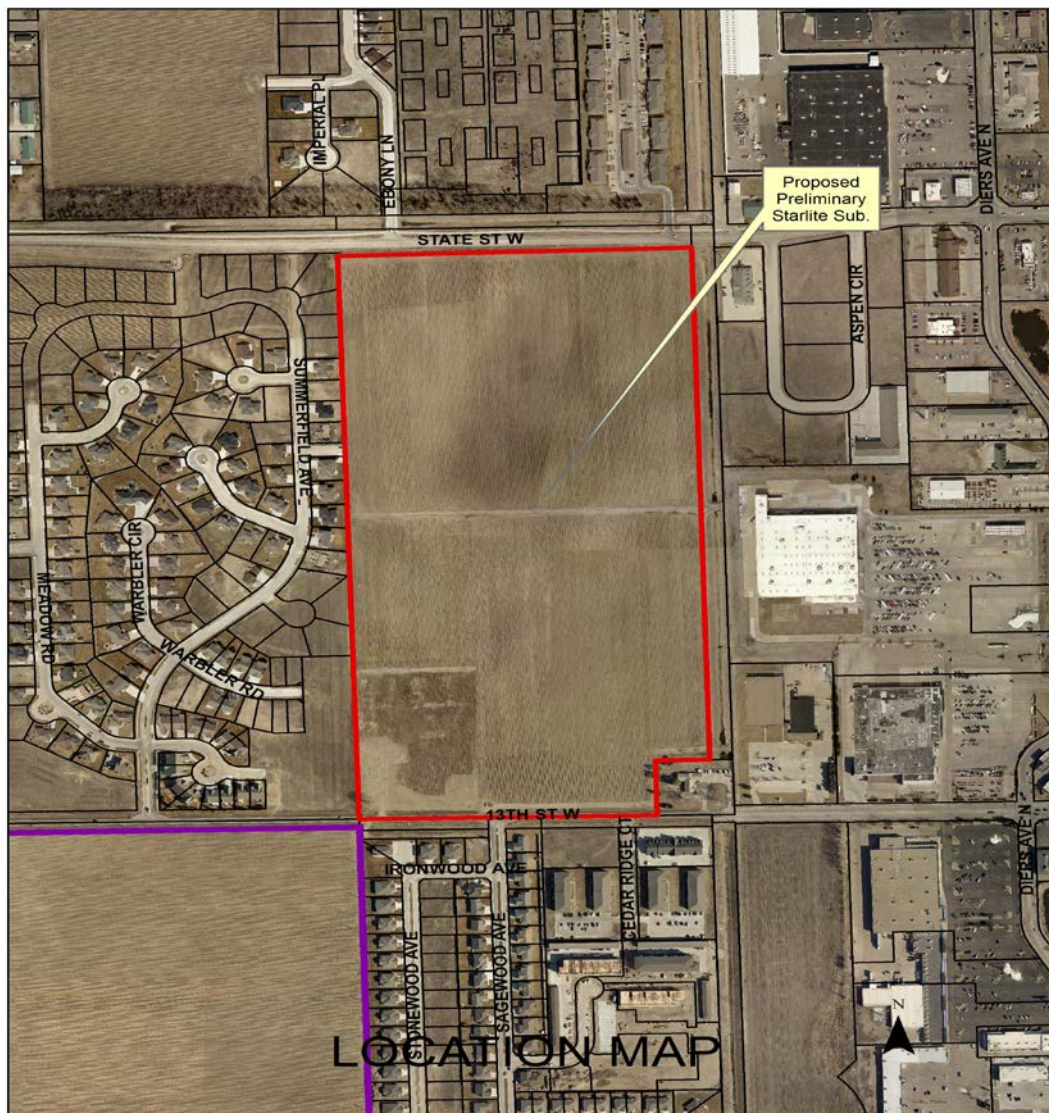
Size: 69.346 acres

Zoning: R4 – High Density Residential Zone

Road Access: City roads will be available

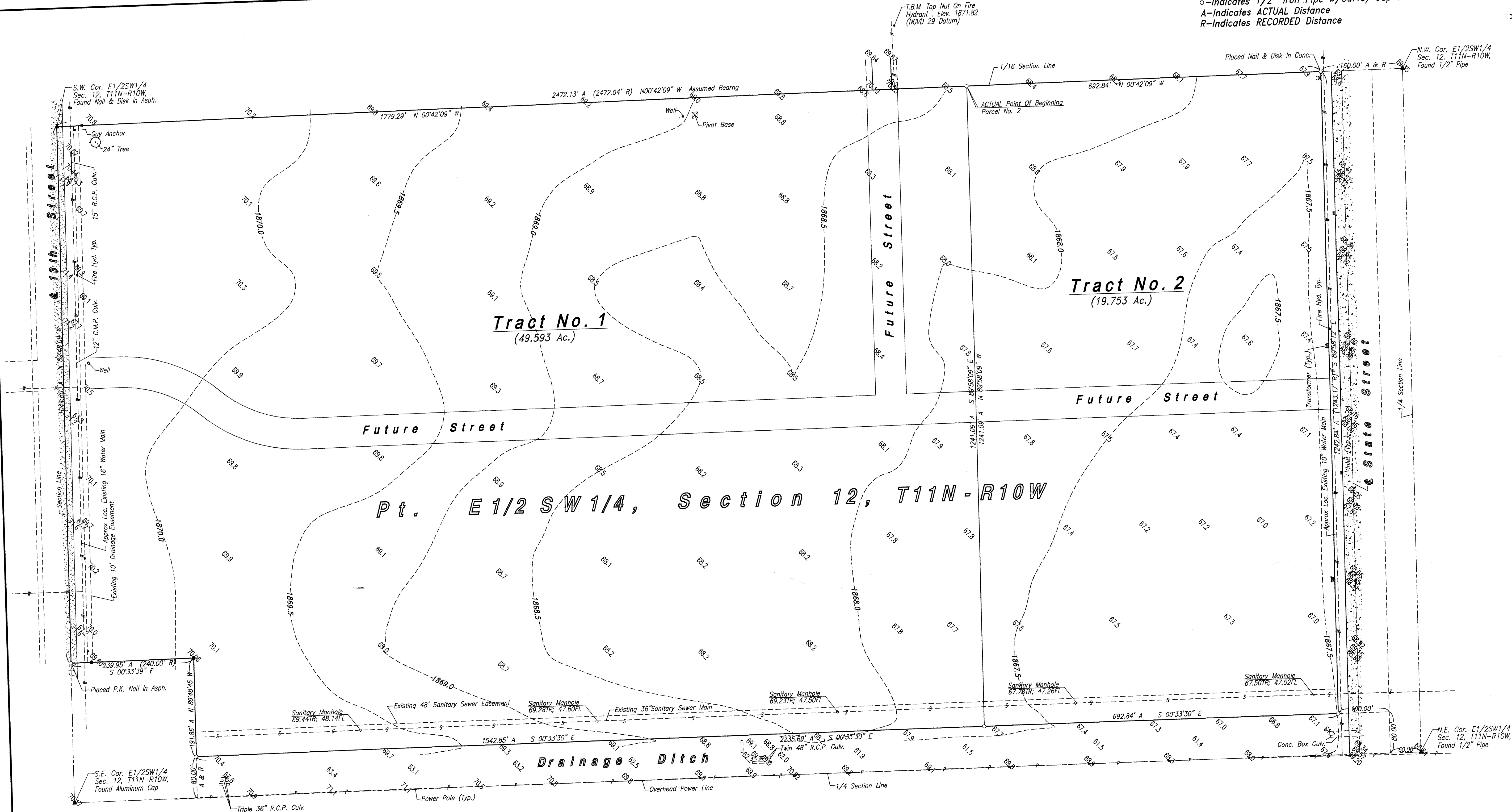
Water Public: City water is available

Sewer Public: City sewer is available.



LEGEND
●-Indicates 1/2" Iron Pipe Found Unless Otherwise Noted
○-Indicates 1/2" Iron Pipe w/Survey Cap Placed Unless Otherwise Noted
A-Indicates ACTUAL Distance
R-Indicates RECORDED Distance

Scale: 1" = 100'



Surveyor's Certificate
I hereby certify that to the best of my knowledge and belief, the accompanying plat is from an accurate survey of the described property made under my supervision.

Dyl D. Sorgentrei
Deryl D. Sorgentrei, Reg. Land Surveyor
NEBRASKA REGISTERED LAND SURVEYOR
15578
DERYL D. SORGENTREI

Starlite Sub.

PRELIMINARY PLAT STARLITE SUB.	
Part E1/2SW1/4, Section Twelve (12), T 11 N - R 10 W In The City Of Grand Island, Hall County, Nebraska	
SUBMITTED BY:	DRAWN BY: Deryl S.
CHECKED BY: D.D.S	SHEET No. DWG. No.
APPROVED BY:	1 OF 1
DATE: May 11, 2015	REVISIONS
PROJECT No.	

2810 NORTH WEBB ROAD, GRAND ISLAND, NEBRASKA 68802 P.O. BOX 549
E-MAIL: surveyor@cccurse.net PHONE (308) 382-1472 FAX (308) 382-1423