



City of Grand Island

Tuesday, January 27, 2015

Council Session

Item G-8

#2015-21 - Approving Acquisition of Public Utility Easement for the North Interceptor Phase II; Sanitary Sewer Project No. 2013-S-4 (Northwest Crossings, LLC)

This item relates to the aforementioned Public Hearing item E-4.

Staff Contact: John Collins, P.E. - Public Works Director

RESOLUTION 2015-21

WHEREAS, a public utility easement is required by the City of Grand Island, from an affected property owner for the North Interceptor Phase II; Sanitary Sewer Project No. 2013-S-4, described as follows:

Tract No	Owner	Legal	Total
14	Northwest Crossings, LLC	THE NORTH 25.00 FEET OF LOTS ONE (1), TWO (2), THREE (3), FOUR (4), FIVE (5), SIX (6), SEVEN (7) AND EIGHT (8), BELS SUBDIVISION, IN THE CITY OF GRAND ISLAND, HALL COUNTY, NEBRASKA. SAID TRACT CONTAINS A CALCULATED AREA OF 9,510 SQUARE FEET OR 0.218 ACRES MORE OR LESS.	\$25,600.00
TOTAL			\$25,600.00

WHEREAS, an agreement for the public utility easement has been reviewed and approved by the City Legal Department.

NOW, THEREFORE, BE IT RESOLVED BY THE MAYOR AND COUNCIL OF THE CITY OF GRAND ISLAND, NEBRASKA, that the City of Grand Island be, and hereby is, authorized to enter into the agreement for the public utility easement on the above described tract of land, in the amount of \$25,600.00.

BE IT FURTHER RESOLVED, that the Mayor is hereby authorized and directed to execute such agreements on behalf of the City of Grand Island.

- - -

Adopted by the City Council of the City of Grand Island, Nebraska, January 27, 2015.

Jeremy L. Jensen, Mayor

Attest:

RaNae Edwards, City Clerk

Approved as to Form ✕ _____ January 23, 2015 ✕ City Attorney

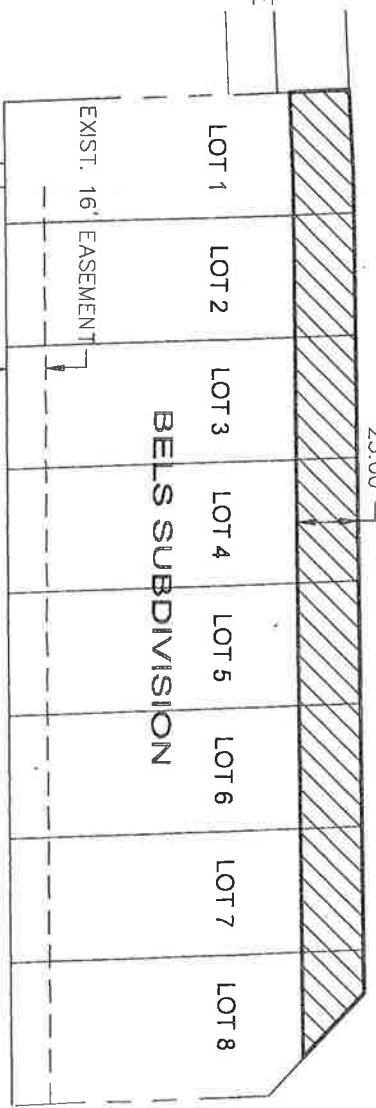
NORTHWEST CROSSINGS, LLC



CAPITAL AVENUE

25.00'

NO SCALE



WEBB ROAD

LEGAL DESCRIPTION OF PERMANENT EASEMENT
 THE NORTH 25.00 FEET OF LOTS ONE (1), TWO (2), THREE (3), FOUR (4), FIVE (5), SIX (6), SEVEN (7) AND EIGHT (8), BELS SUBDIVISION, IN THE CITY OF GRAND ISLAND, HALL COUNTY, NEBRASKA. SAID TRACT CONTAINS A CALCULATED AREA OF 9,510 SQUARE FEET OR 0.218 ACRES MORE OR LESS.

 PERMANENT EASEMENT

USER: Ihusted

DWG: F:\Projects\011-2347\MUNI Phase 2\Easement Exhibits\112347_ESMT12-NORTHWEST CROSSINGS.dwg
 DATE: Mar 27, 2014 4:53pm XREFS: 112347_Phase 2 PBASE 112347_Phase 2 XBASE

PROJECT NO: 011-2347
 DRAWN BY: LH
 DATE: 03/25/2014

CITY OF GRAND ISLAND
 EASEMENT



201 E 2ND STREET
 PO BOX 1072
 GRAND ISLAND, NE 68801
 TEL 308.384.8750
 FAX 308.384.8752

EXHIBIT
 A