



# City of Grand Island

Tuesday, April 28, 2009

Council Session

## Item G7

**#2009-98 - Approval to Proceed with Transmission Line Easement  
Acquisitions - North Route Transmission Line Work**

*This item relates to the aforementioned Public Hearing Item E-4.*

Staff Contact: Gary R. Mader

R E S O L U T I O N   2009-98

WHEREAS, on April 11, 2006, by Resolution No. 2006-114, the City Council of the City of Grand Island approved an agreement with Advantage Engineering of Chesterfield, Missouri, to perform engineering and other services for transmission lines and substations; and

WHEREAS, the City has identified a need for a 115 kV transmission and substation system from GIUD Substation F to Nebraska Public Power District's St. Libory Junction Northwest of the City; and

WHEREAS, a public hearing was held on April 28, 2009, for the purpose of discussing the proposed acquisition of easements located in Hall County, Nebraska; and more particularly described on the attached exhibits; and

WHEREAS, the project is subject to review by one or more regulatory agencies.

NOW, THEREFORE, BE IT RESOLVED BY THE MAYOR AND COUNCIL OF THE CITY OF GRAND ISLAND, NEBRASKA, that the Utilities Department and Advantage Engineering are authorized to proceed with the engineering and other services for this project according to the terms of the agreement entered into with Advantage Engineering. The Utilities Department is further authorized to proceed with all permitting and regulatory actions necessary for the project and to take the necessary steps to acquire the interests in real estate needed to complete the project.

BE IT FURTHER RESOLVED, that the Mayor is hereby authorized and directed to execute all necessary documents to achieve the intent of this Resolution on behalf of the City of Grand Island.

- - -

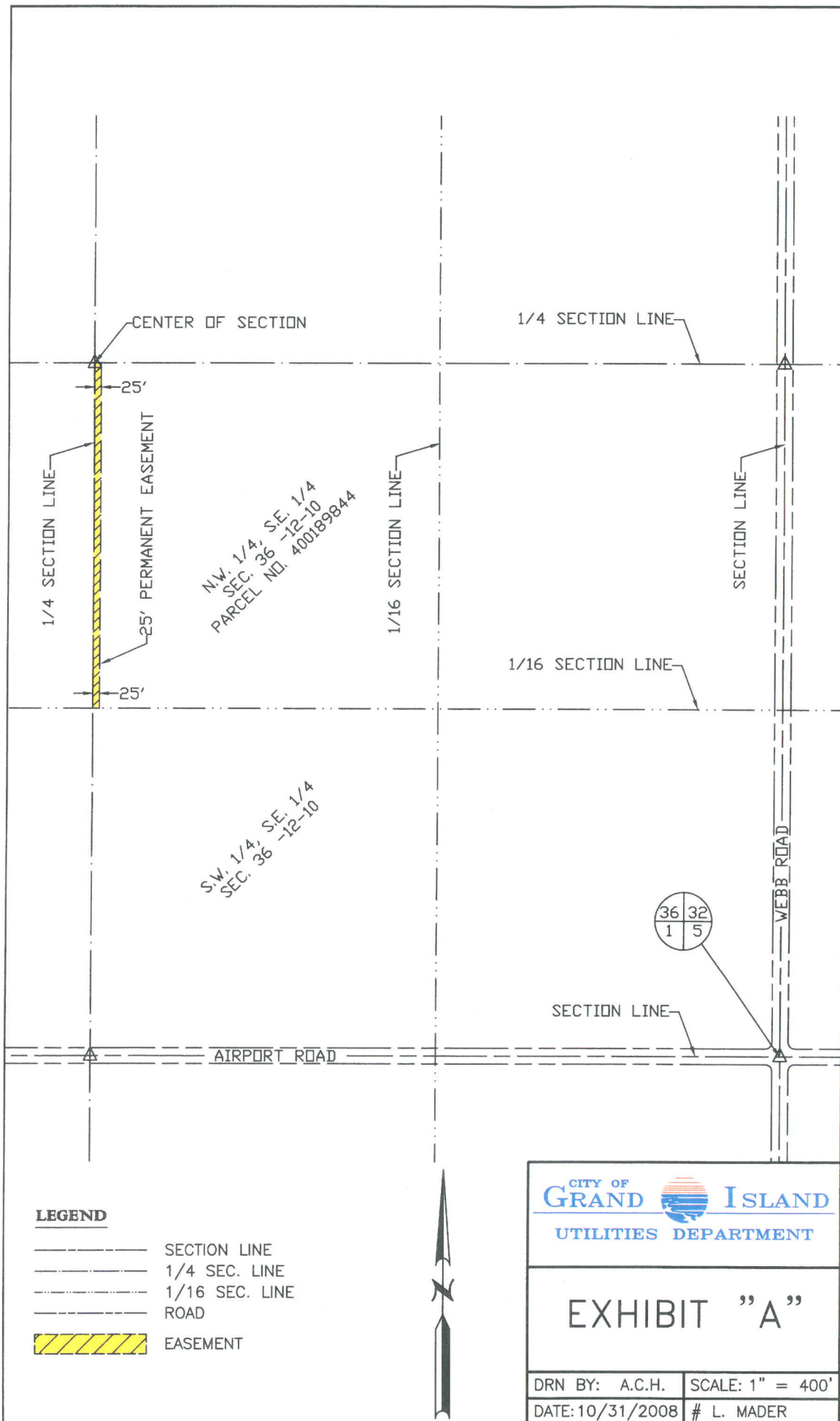
Adopted by the City Council of the City of Grand Island, Nebraska, April 28, 2009.

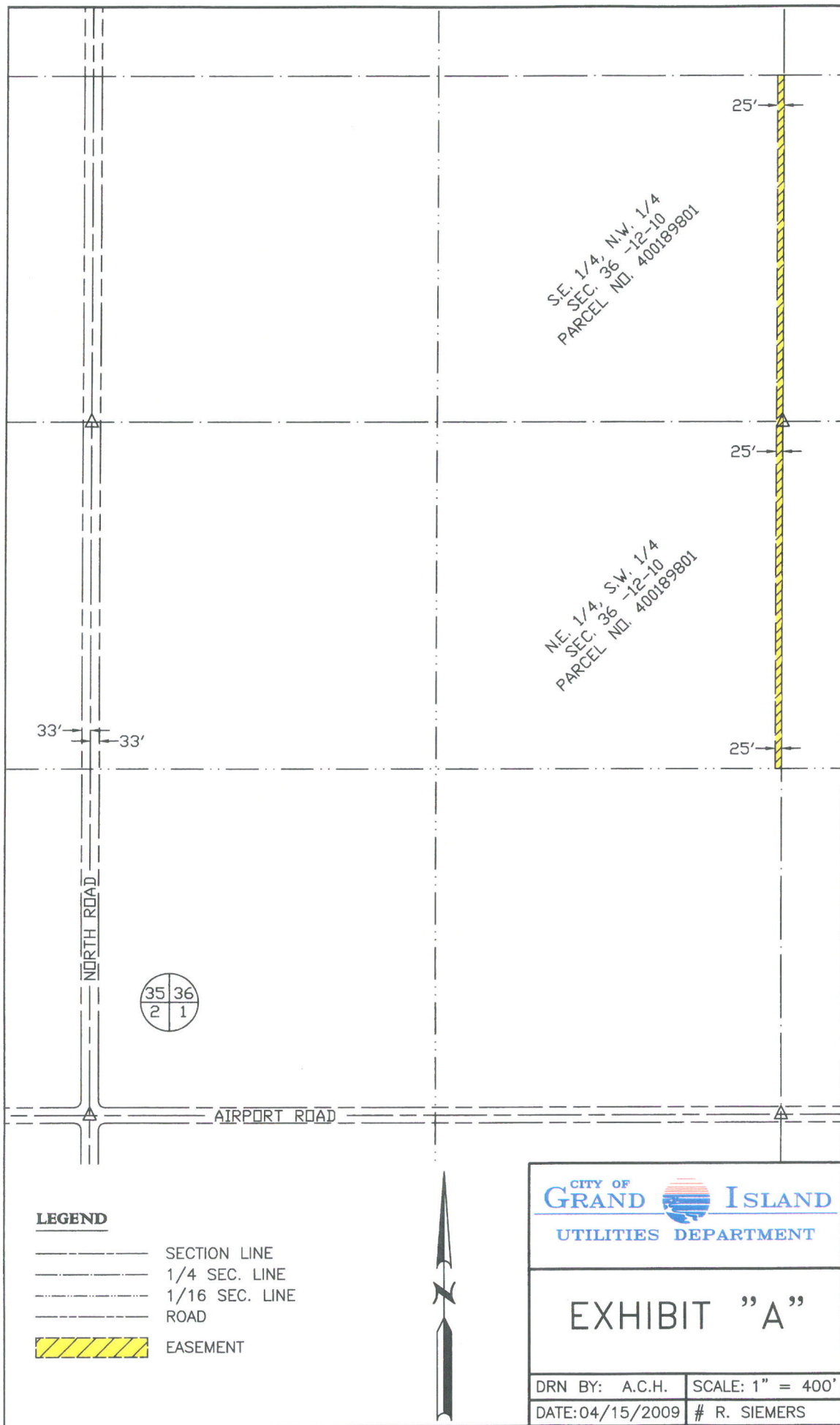
\_\_\_\_\_  
Margaret Hornady, Mayor

Attest:

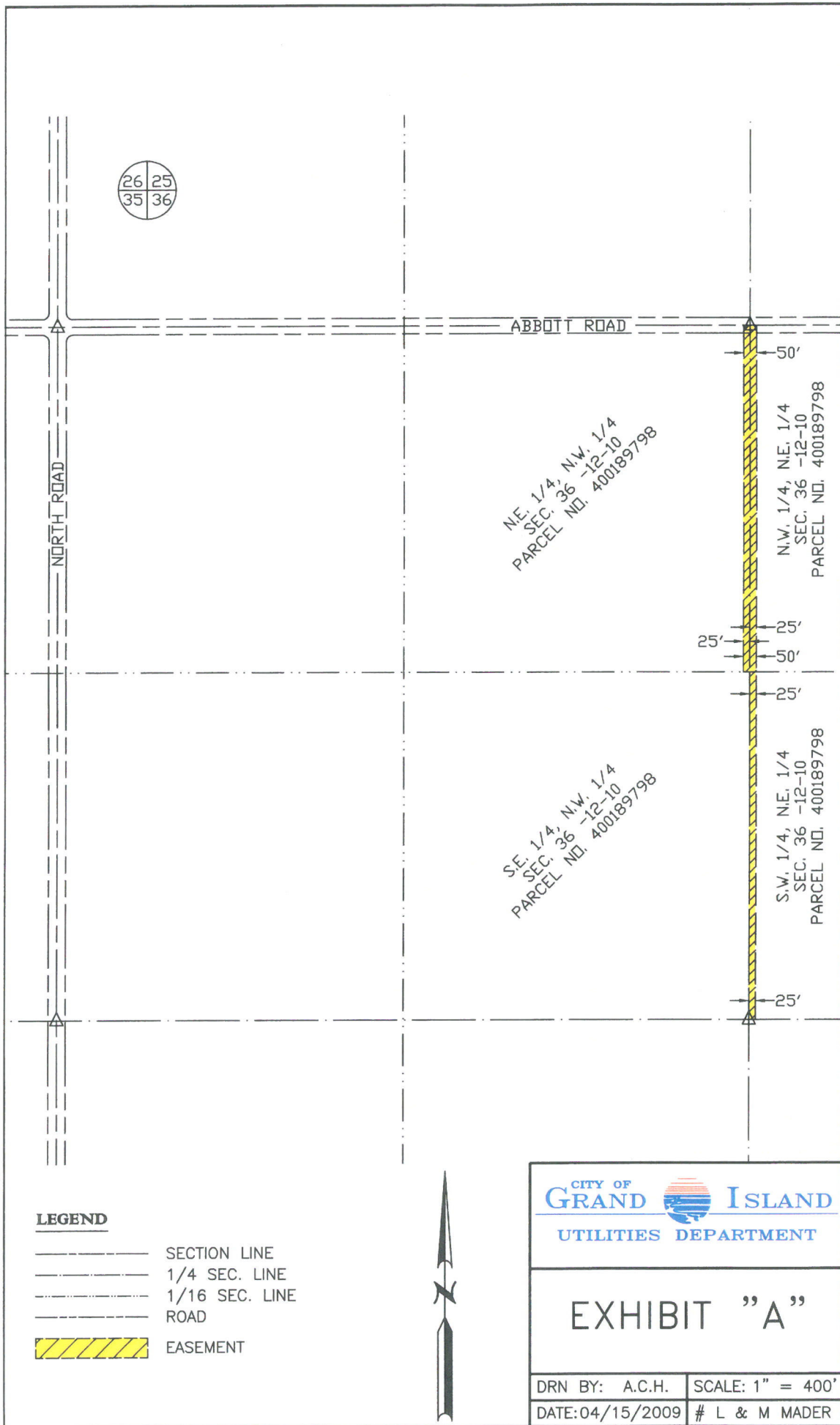
\_\_\_\_\_  
RaNae Edwards, City Clerk

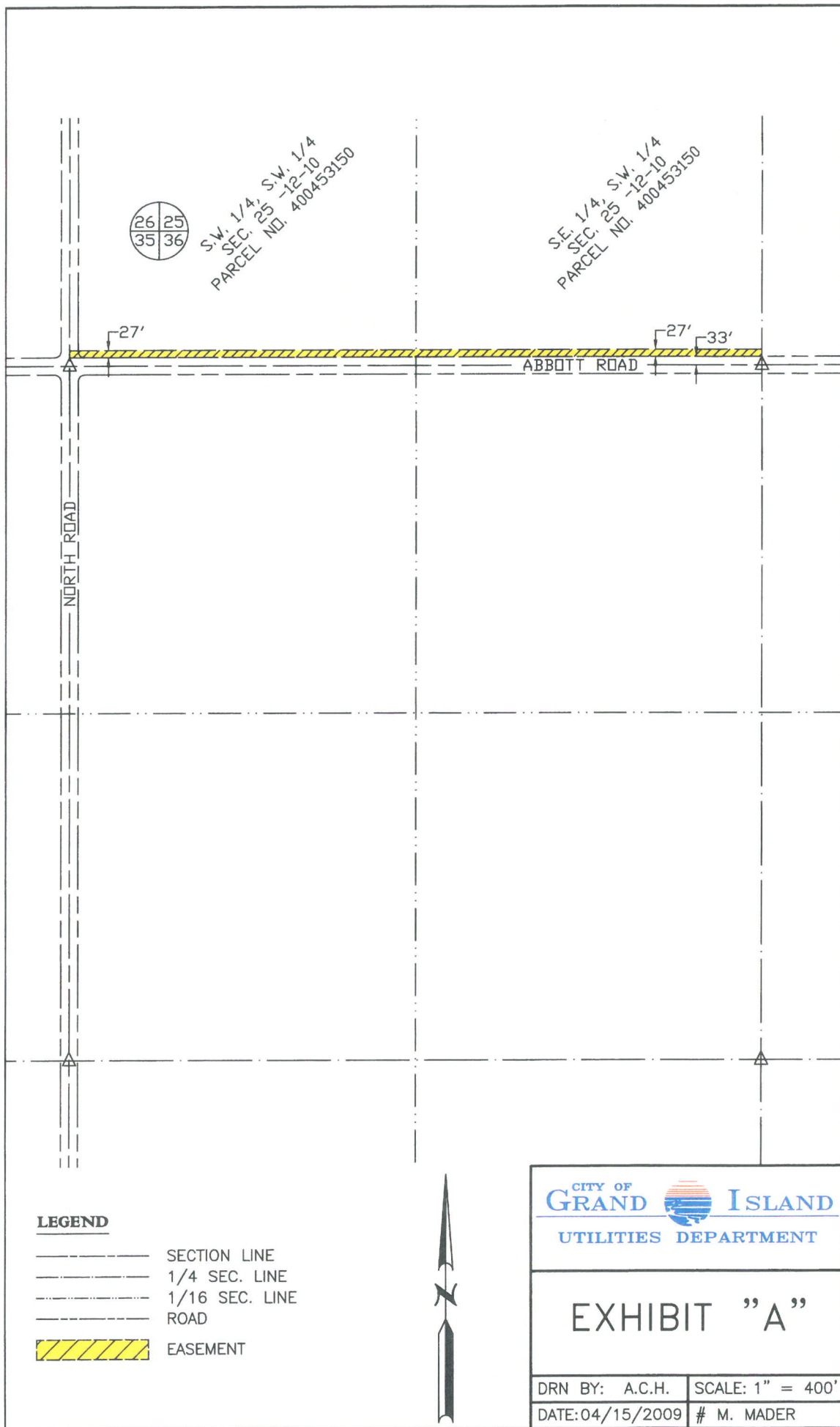
Approved as to Form <input type="checkbox"/> _____	
April 23, 2009	<input type="checkbox"/> City Attorney

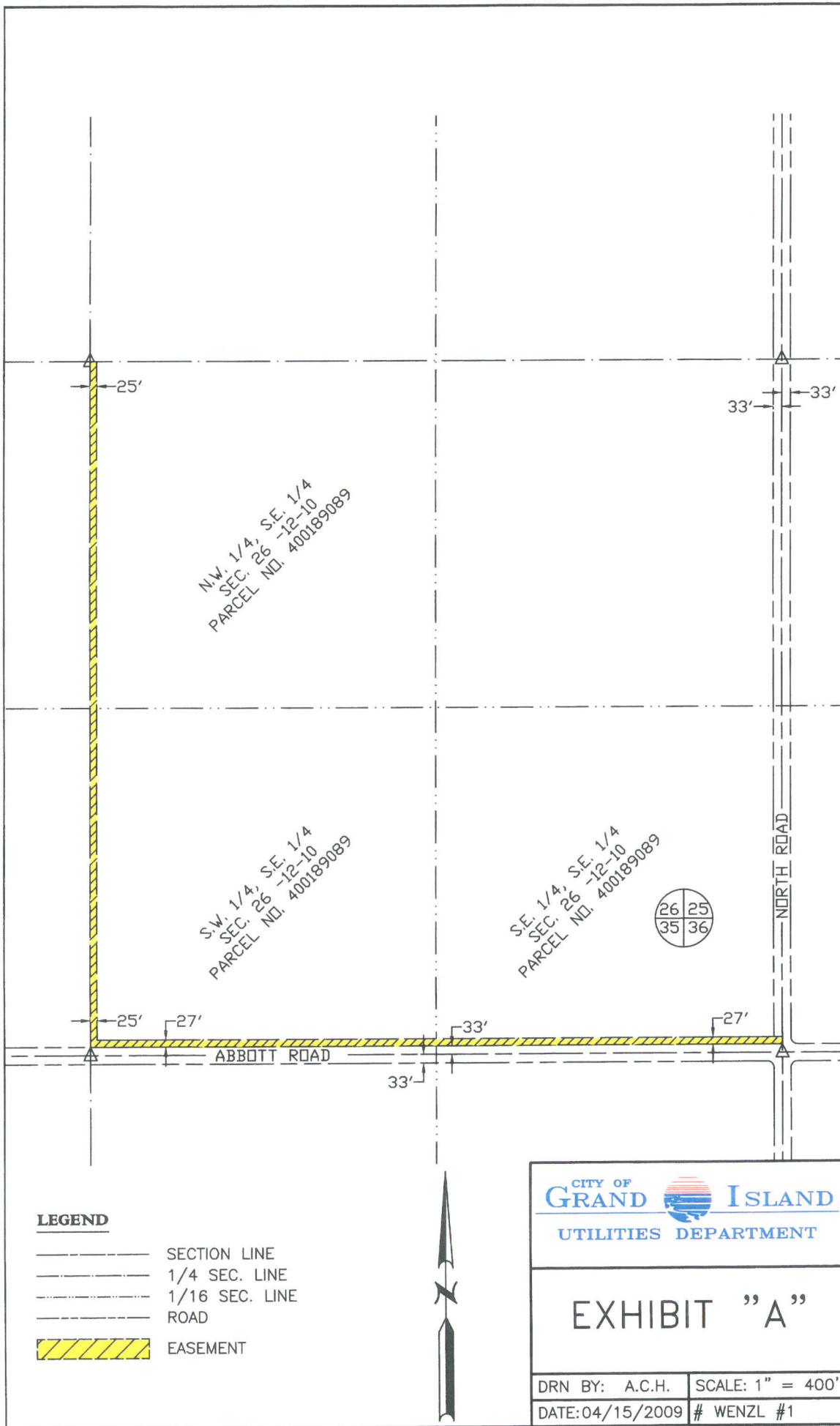


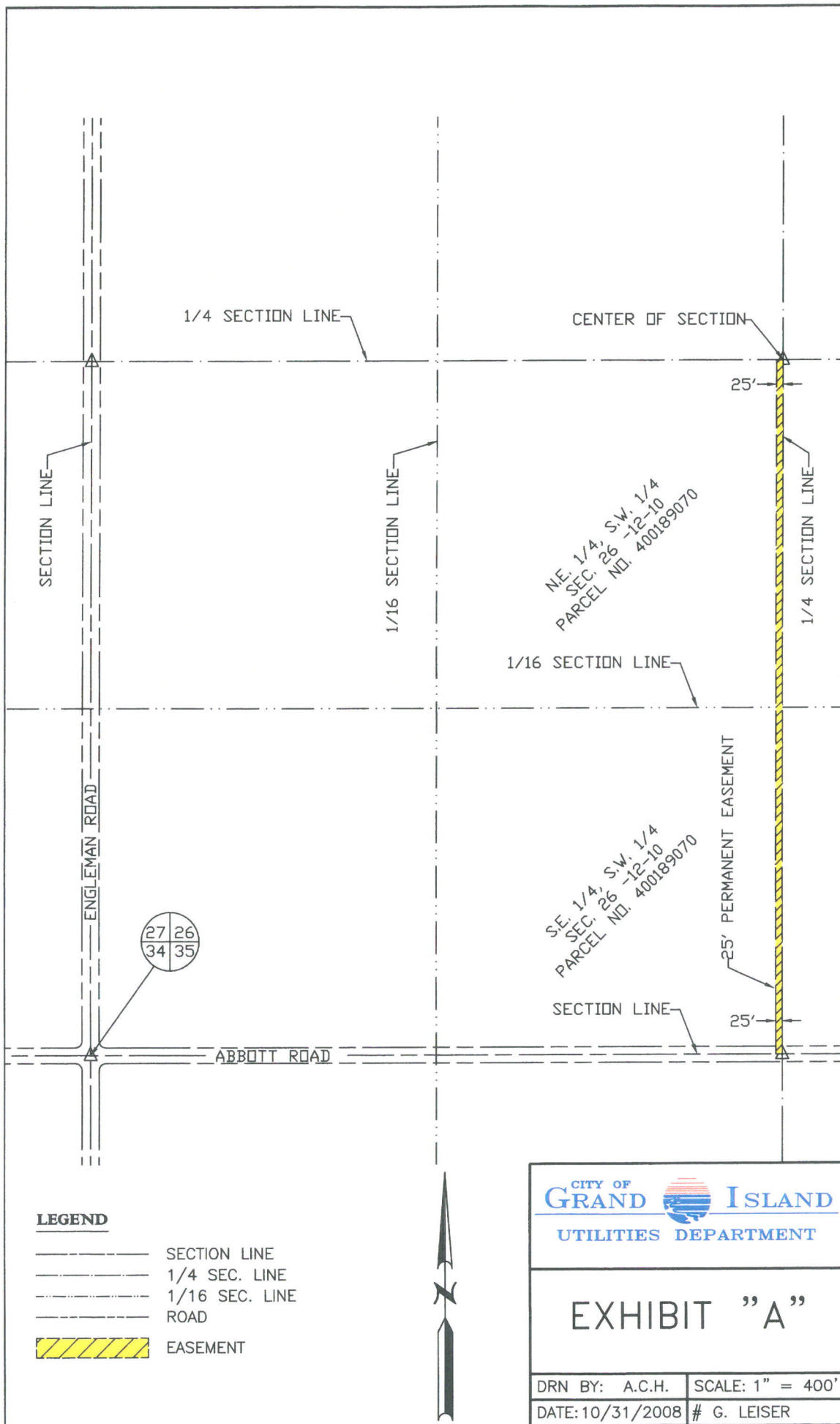


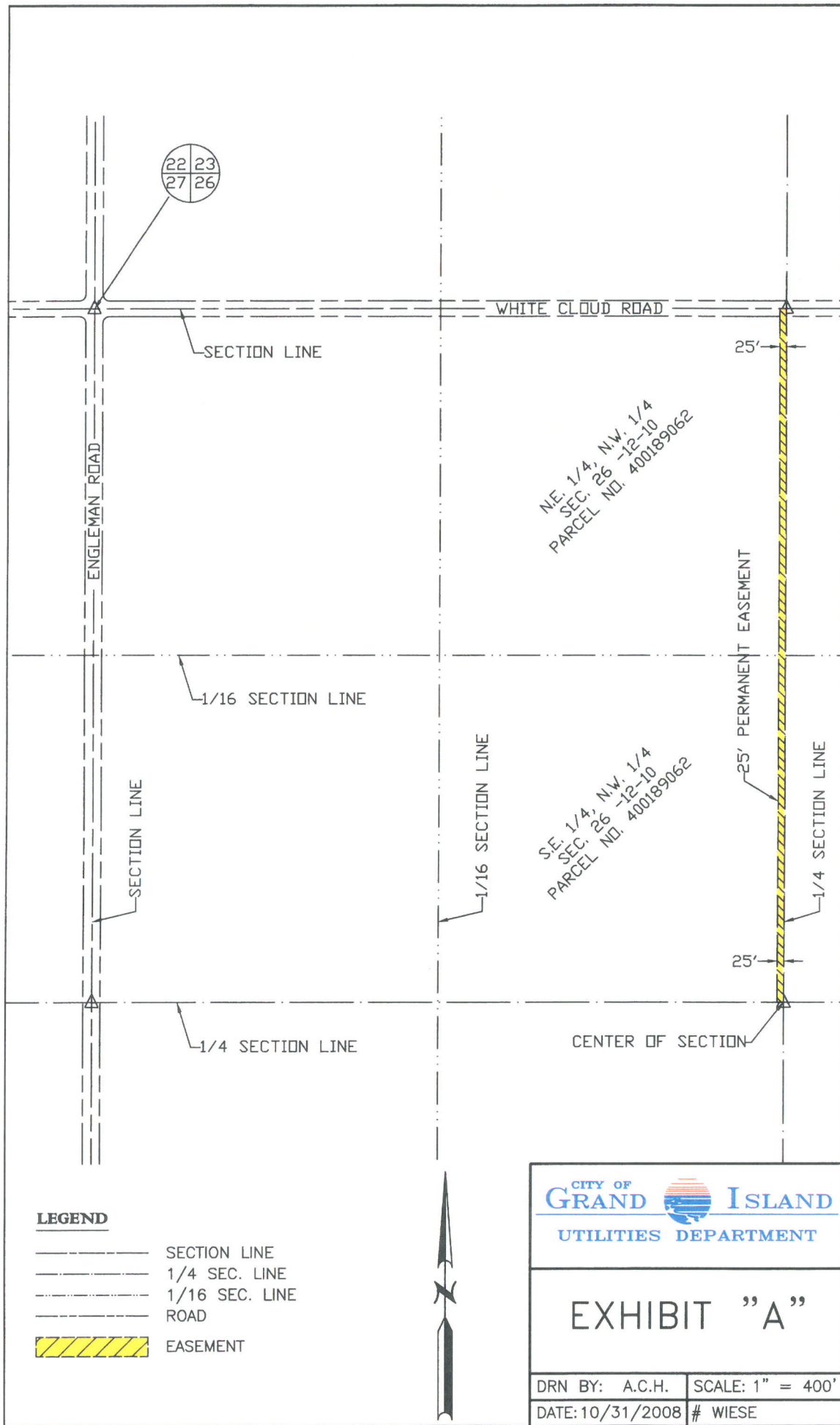


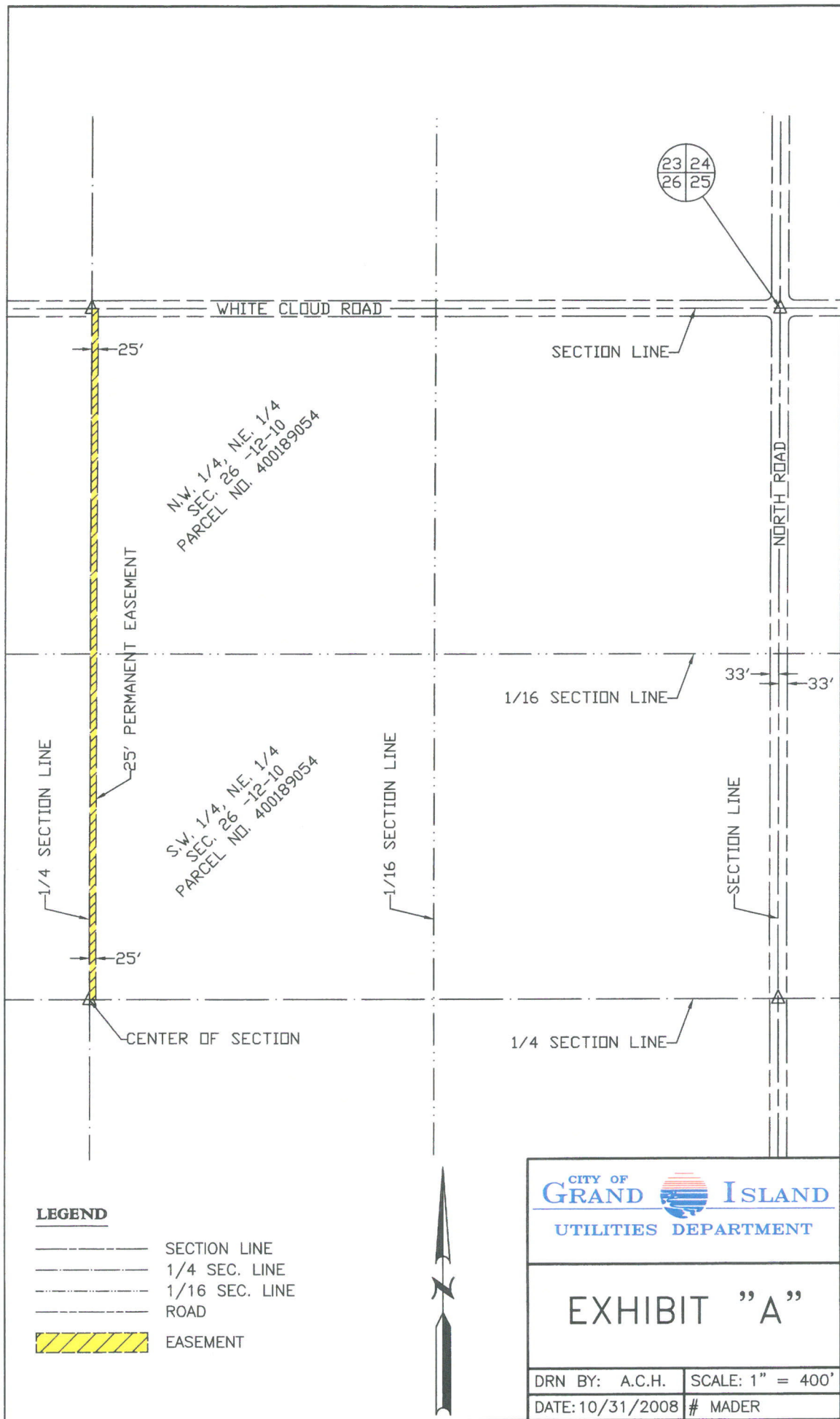




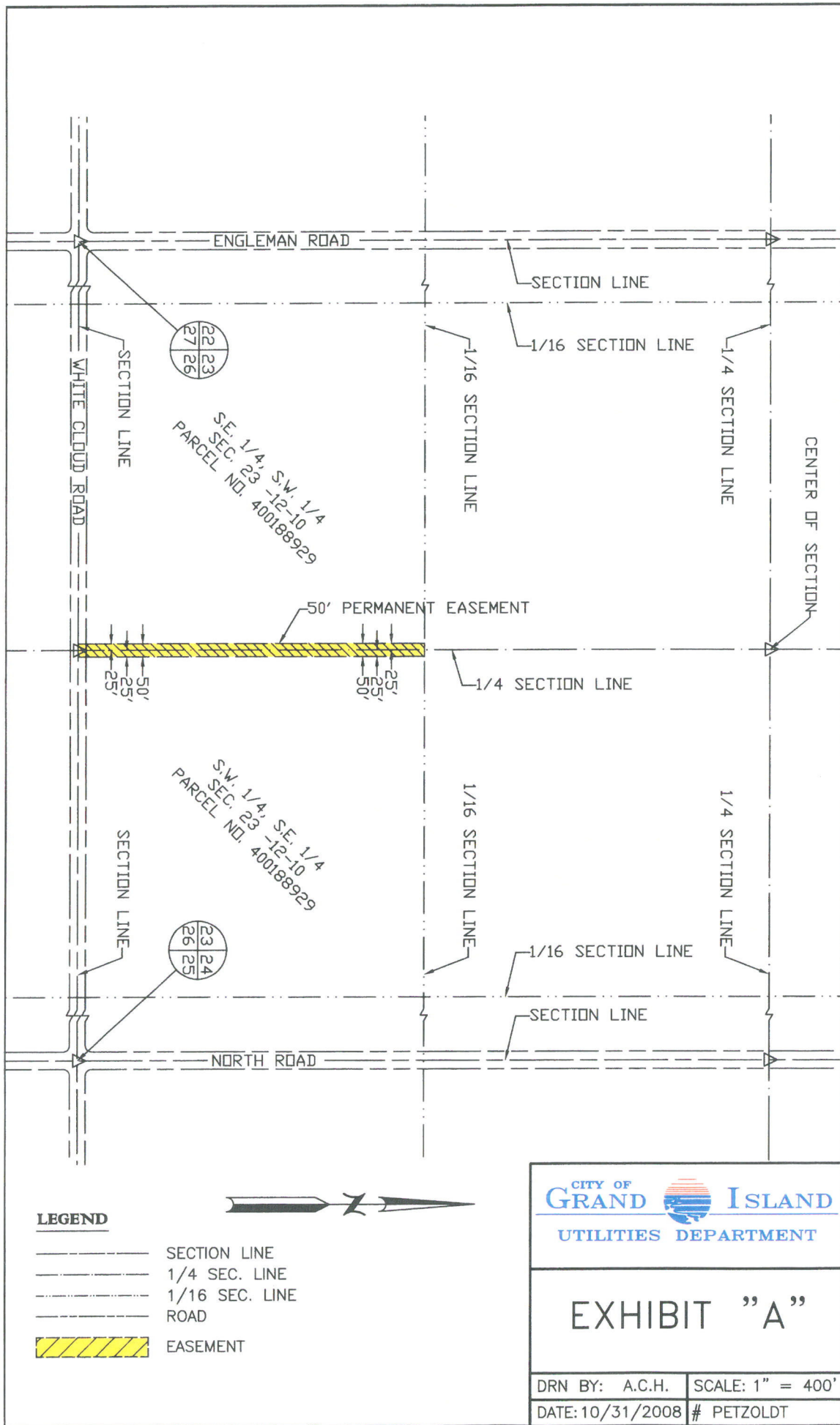


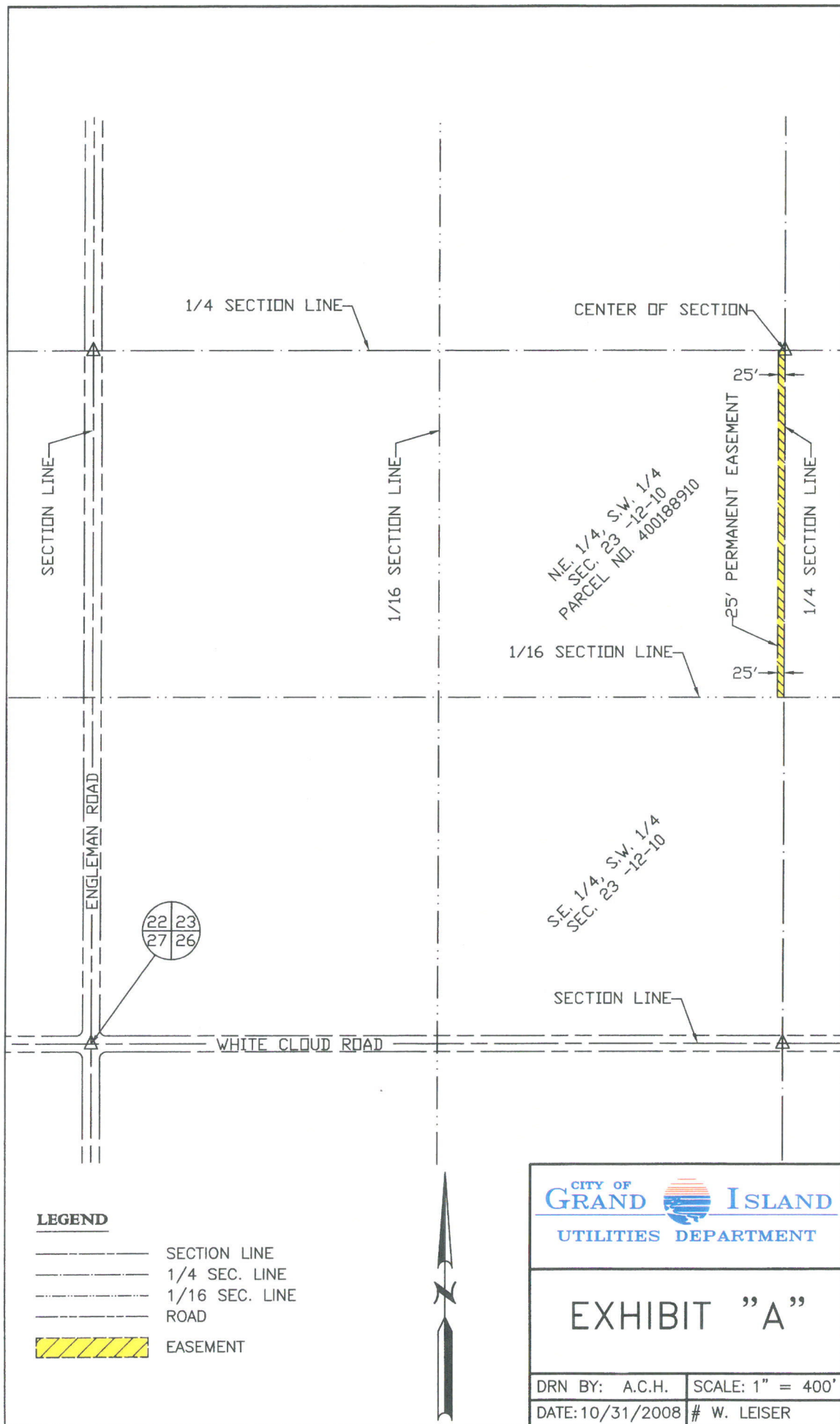








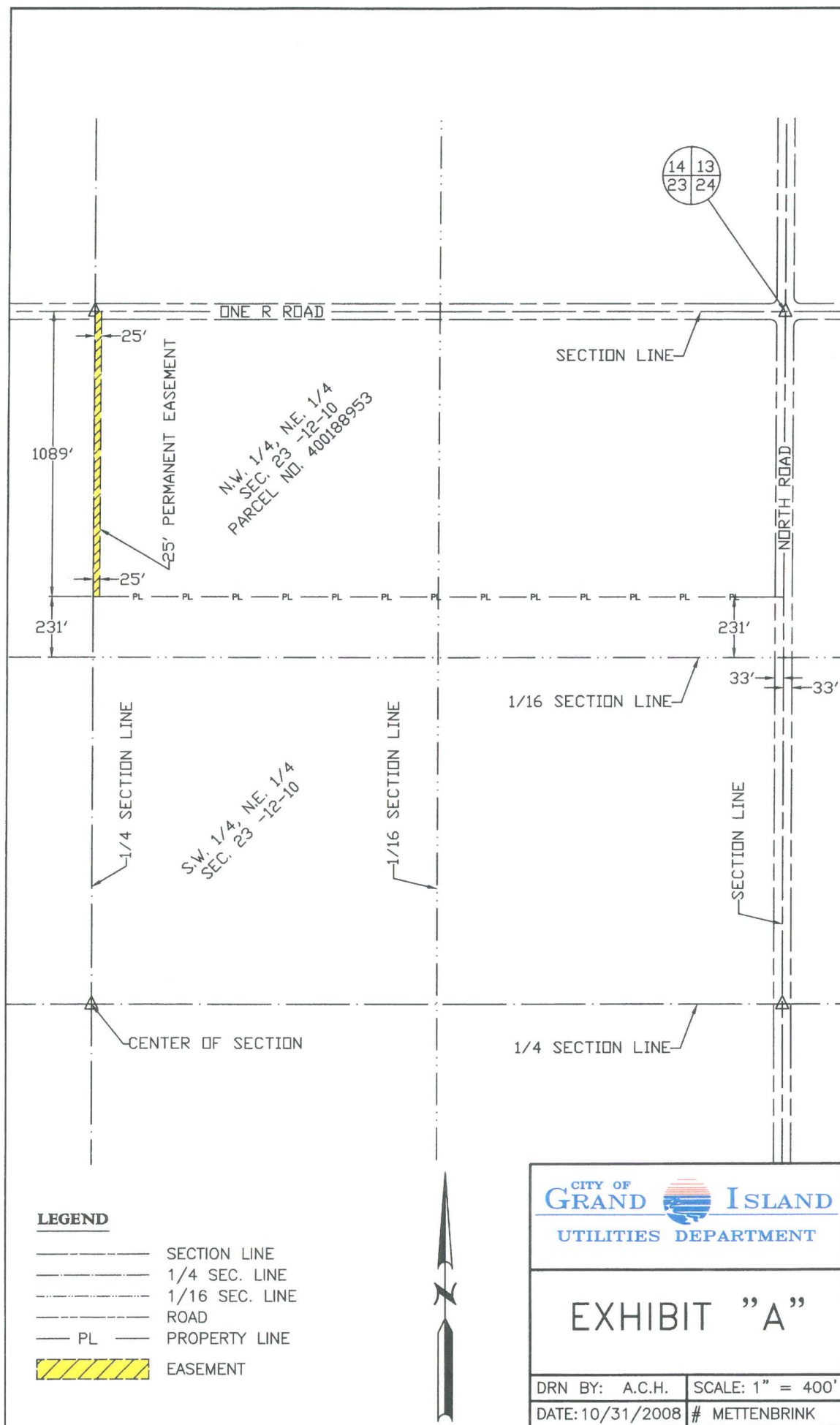




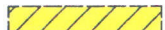








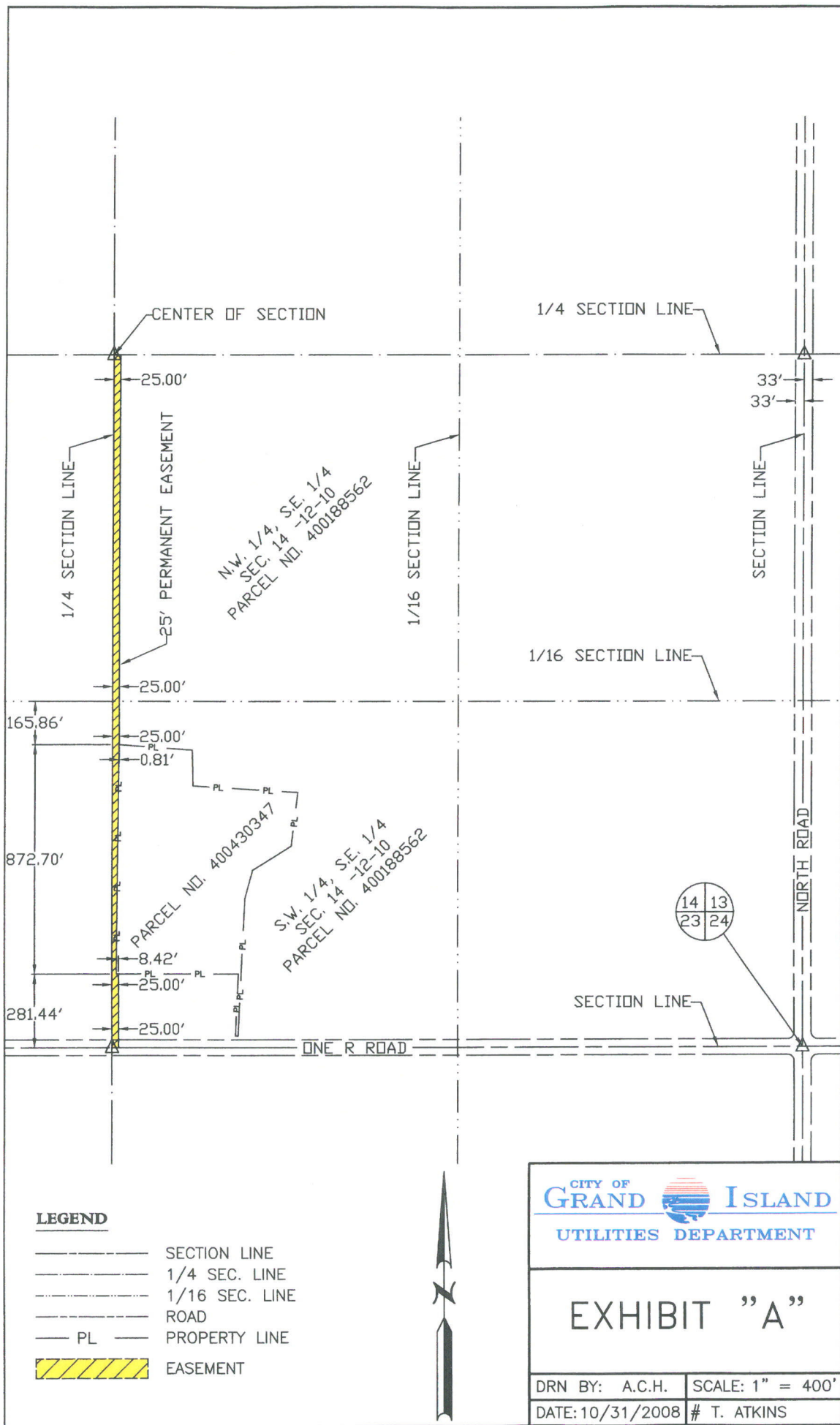
**LEGEND**

- SECTION LINE
- 1/4 SEC. LINE
- 1/16 SEC. LINE
- ROAD
- PL — PROPERTY LINE
-  EASEMENT

CITY OF  
**GRAND ISLAND**  
UTILITIES DEPARTMENT

**EXHIBIT "A"**

DRN BY: A.C.H.	SCALE: 1" = 400'
DATE: 10/31/2008	# METTENBRINK



**LEGEND**

- SECTION LINE
- 1/4 SEC. LINE
- 1/16 SEC. LINE
- ROAD
- PL PROPERTY LINE
- EASEMENT



CITY OF  
**GRAND ISLAND**  
UTILITIES DEPARTMENT

**EXHIBIT "A"**

DRN BY: A.C.H. SCALE: 1" = 400'  
DATE: 10/31/2008 # T. ATKINS

