



# City of Grand Island

Tuesday, April 14, 2009

Council Session

## Item E5

**Public Hearing Concerning Acquisition of Utility Easement -  
South Side of Trust Street - North Road to Good Samaritan Place -  
Chief Industries**

Staff Contact: Gary R. Mader

# **Council Agenda Memo**

**From:** Robert H. Smith, Asst. Utilities Director

**Meeting:** April 14, 2009

**Subject:** Acquisition of Utility Easement – South Side of Trust Street – North Road to Good Samaritan Place – Chief Industries

**Item #'s:** E-5 & G-8

**Presenter(s):** Gary R. Mader, Utilities Director

## **Background**

Nebraska State Law requires that acquisition of property must be approved by City Council. The Utilities Department needs to acquire an easement relative to the property of Chief Industries located on the south side of Trust Street, from North Road to Good Samaritan Place, in the City Of Grand Island, Hall County, in order to have access to install, upgrade, maintain, and repair power appurtenances, including lines and transformers.

## **Discussion**

This easement will be used to place conduit and three phase primary cable along the south side of Trust Street. This three phase line will provide a second feed and backup to the system currently being installed throughout Good Samaritan Subdivision. This will allow de-energizing a single transformer without taking all out of service.

## **Alternatives**

It appears that the Council has the following alternatives concerning the issue at hand. The Council may:

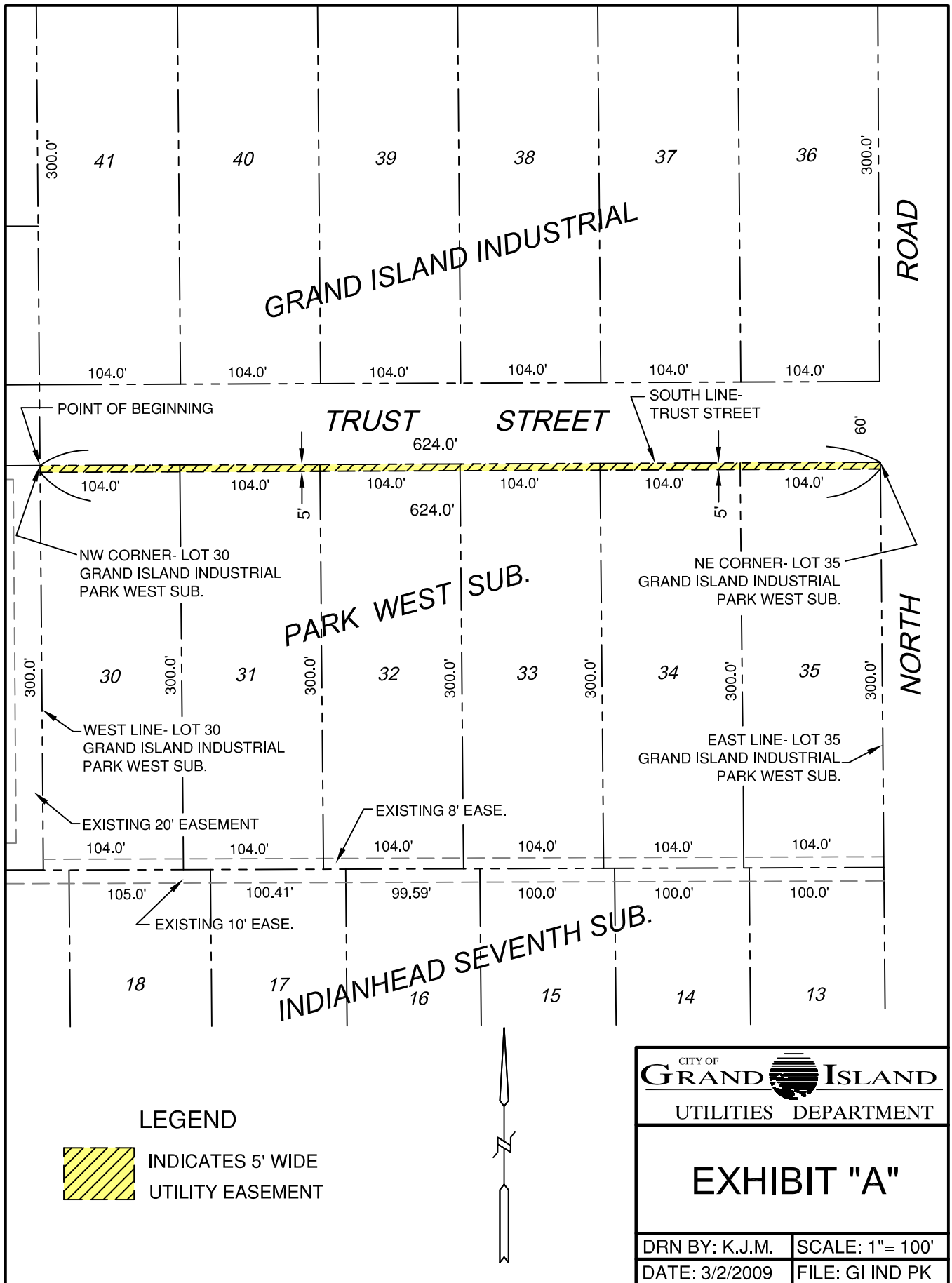
1. Make a motion to approve
2. Refer the issue to a Committee
3. Postpone the issue to future date
4. Take no action on the issue


## **Recommendation**

City Administration recommends that the Council approve the resolution for the acquisition of the easement for one dollar (\$1.00).

## **Sample Motion**

Move to approve acquisition of the Utility Easement.



**LEGEND**  
 INDICATES 5' WIDE UTILITY EASEMENT



CITY OF  
**GRAND ISLAND**  
 UTILITIES DEPARTMENT

**EXHIBIT "A"**

DRN BY: K.J.M.	SCALE: 1" = 100'
DATE: 3/2/2009	FILE: GI IND PK