



City of Grand Island

Tuesday, January 13, 2009

Council Session

Item G10

#2009-4 - Approving Certificate of Final Completion - Water Main District 453T, Sanitary Sewer District 522T, and Lift Station 22

Staff Contact: Gary R. Mader

Council Agenda Memo

From: Gary R. Mader, Utilities Director
Steve Riehle, Public Works Director

Meeting: January 13, 2009

Subject: Water Main District 453T and Sanitary Sewer District 522T and Lift Station #22 – Central Nebraska Regional Airport and GI Army Aviation Support Facility
Certificate of Final Completion – Connection Fees

Item #'s: G-10

Presenter(s): Gary R. Mader, Utilities Director
Steve Riehle, Public Works Director

Background

With the selection of Grand Island as the location of the new Grand Island Army Aviation Support Facility, water and sanitary sewer infrastructure were extended to support the development. The construction contract was a combined project of both the Utilities Department and the Public Works Department for the installation of a 12" water main, 4" sanitary sewer force main, and a sanitary lift station. The work was installed across property of the Central Nebraska Regional Airport, commencing at Sky Park Road, approximately one half (1/2) mile north of Capital Avenue, and running northeasterly to the westerly side of the Grand Island Army Aviation Support Facility at the northeast corner of Shady Bend Road and Airport Road.

Attached for reference is a map showing the construction area.

Discussion

Specifications for the project were developed and bids advertised and received in accordance with the City Purchasing Code. The Diamond Engineering Company of Grand Island, Nebraska was awarded the contract on October 9, 2007. The bid award was based on the least total cost for the entire project (water main, plus sanitary sewer force main and lift station). The project has now been completed in accordance with the terms, conditions, and stipulations of the contract, plans, and specifications.

The total for all water main construction was \$343,818.69; the total amount for the sanitary sewer and the lift station construction was \$370,258.69; for a total project amount of \$714,077.38.

Connection Fees for Sanitary Sewer and Lift Station

According to the *Interlocal Agreement For Infrastructure Construction by and Between the Hall County Airport Authority and the City of Grand Island*, dated August 8, 2007, no connection fees are due for the installation of the sanitary sewer and the related lift station.

Connection Fees for Water Main

As per the above referenced agreement, the Airport Authority agreed to pay a portion of the cost of the water main construction. That portion at 30% of the project cost is \$103,145.61. This amount is now due.

The connection fees for the remainder of the construction amount are computed based on the water main construction being done as a “Tap” district, District 453T. This is the standard method used by the City to recoup costs when water mains are installed across undeveloped lands. Those fees, associated with the District, are due when a property “taps” the main for service.

The connection (tap) fee for other properties included in the district is \$61.1542640 per front foot.

Attachments:

- ✓ Construction area map
- ✓ Engineers Certificate of Final Completion for Sanitary Sewer District 522T and Lift Station 22
- ✓ Engineers Certificate of Final Completion for Water Main District 453T
- ✓ Tabulation of Connection fees
- ✓ Tabulation of Construction Costs for Water Main District 453T
- ✓ Resolution #2009-4

Alternatives

It appears that the Council has the following alternatives concerning the issue at hand. The Council may:

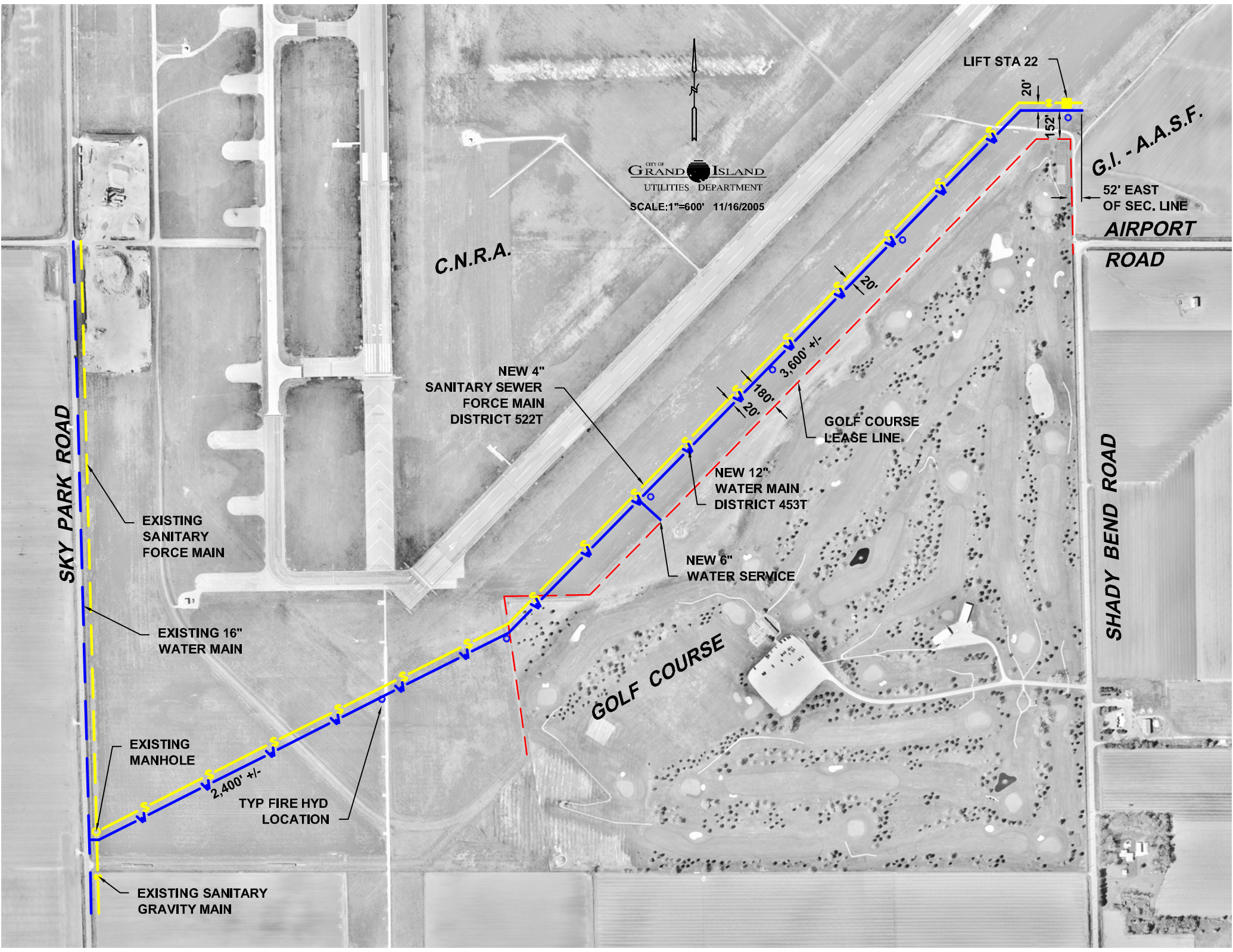
1. Move to approve
2. Refer the issue to a Committee
3. Postpone the issue to future date
4. Take no action on the issue

Recommendation

City Administration recommends that the Council accept the Certificate of Final Completion for Water Main District 453T / Sanitary Sewer District 522T / Lift Station 22, and sit as Board of Equalization on February 24, 2009 to set the connection fee amount for the properties within the boundaries of Water Main District 453T as tabulated on the attached listing.

Sample Motion

Move to approve the Certificate of Final Completion for Water Main District 453T / Sanitary Sewer District 522T / Lift Station 22 and approve the connection fees for Water Main District 453T.



SKY PARK ROAD

EXISTING
SANITARY
FORCE MAIN

EXISTING 16"
WATER MAIN

EXISTING
MANHOLE

TYP FIRE HYD
LOCATION

EXISTING SANITARY
GRAVITY MAIN

NEW 4"
SANITARY SEWER
FORCE MAIN
DISTRICT 522T

NEW 12"
WATER MAIN
DISTRICT 453T

NEW 6"
WATER SERVICE

GOLF COURSE

GOLF COURSE
LEASE LINE

CITY OF
GRAND ISLAND
UTILITIES DEPARTMENT
SCALE: 1"=600' 11/16/2005

C.N.R.A.

LIFT STA 22

G.I. - A.A.S.F.
52' EAST
OF SEC. LINE
AIRPORT
ROAD

SHADY BEND ROAD

ENGINEER'S CERTIFICATE OF FINAL COMPLETION

SANITARY SEWER DISTRICT 522T & LIFT STATION #22
NATIONAL GUARD HELICOPTER FACILITY
GRAND ISLAND AIRPORT

CITY OF GRAND ISLAND, NEBRASKA
January 13, 2009

TO THE MEMBERS OF THE COUNCIL
CITY OF GRAND ISLAND
GRAND ISLAND, NEBRASKA

This is to certify that Sanitary Sewer District 522T & Lift Station #22 has been fully completed by The Diamond Engineering Company of Grand Island, Nebraska under the contract dated October 23, 2007. The work has been completed in accordance with the terms, conditions, and stipulations of said contract and complies with the contract, the plans and specifications. The work is hereby accepted for the City of Grand Island, Nebraska, by me as City Engineer/Public Works Director in accordance with the provisions of Section 16-650 R.R.S., 1943.

If is further certified that the improvements as constructed include the following items and costs and that this certificate shall constitute the final payment for this work.

Sanitary Sewer District 522T & Lift Station #22

<u>No.</u>	<u>Description</u>	<u>Unit</u> <u>Price</u>	<u>Unit</u>	<u>Total</u> <u>Quantity</u>	<u>Total</u> <u>Cost</u>
1.	Site Grading	1,115.97	l.s.	1.00	\$ 1,115.97
2.	Portable Davit Crane	3,019.69	l.s.	1.00	\$ 3,019.69
3.	Water Service	6,315.14	l.s.	1.00	\$ 6,315.14
4.	Dewatering Lift Station	21,006.56	l.s.	1.00	\$ 21,006.56
5.	Construction of Lift Station	218,163.75	l.s.	1.00	\$218,163.75
6.	Construct 4" C900 Force Main w/ Detectable and Nondetectable Tape	6.21	l.f.	6,400.00	\$ 39,744.00
7.	Construct 4" MH 11 ¼ Degree Bend	182.30	ea.	2.00	\$ 364.60
8.	Construct 4" MJ 22 ½ Degree Bend	177.10	ea.	1.00	\$ 177.10
9.	Construct 4" MJ 45 Degree Bend	182.98	ea.	1.00	\$ 182.98
10.	Construct 4" J.H. Entrance w/ Link Seal	405.09	ea.	1.00	\$ 405.09
11.	Dry Bore and Install 12" Casing	198.91	l.f.	110.00	\$ 21,880.10
12.	Transition Coupling 4" DIP to 4" C900	132.51	ea.	1.00	\$ 132.51
13.	Thrust Block	165.43	ea.	4.00	\$ 661.72
14.	Construct 8" PVC Sanitary Sewer	18.95	l.f.	154.00	\$ 2,918.30
15.	Transition Coupling 8" DIP to 8" C900	184.63	ea.	-	-
TOTAL – CONSTRUCTION COST					\$316,087.51

CHANGE ORDER NO. 1

1.	Sandfill	4.00	ton	404.37	\$ 1,617.48
TOTAL – INCLUDING CHANGE ORDER					\$317,704.99

SUMMARY OF OTHER COSTS

Menards – Panel	\$ 31.12
Grand Island Daily Independent – Advertising	\$ 51.74
Platte Valley Laboratories – Testing	\$ 550.00
Ace Irrigation – 18" C.M.P.	\$ 485.98
Crescent Electric – Supplies	\$ 136.70
Hooker Brothers – Topsoil	\$ 1,019.67
Kelly Supply – Supplies	\$ 565.79
Kriz Davis – Supplies	\$ 695.61
Olsson & Associates – L.S. Design	\$ 12,500.00
City of Grand Island - Engineering	\$ 31,770.50
Water Tap Fee for Lift Station #22	\$ 4,746.59

TOTAL – OTHER COSTS	\$ 52,553.70

TOTAL COST OF SANITARY SEWER DISTRICT 522T & LIFT STATION #22 **\$370,258.69**

Respectfully submitted,

Steven P. Riehle
City Engineer/Public Works Director

TO MEMEBERS OF THE COUNCIL
CITY OF GRAND ISLAND
GRAND ISLAND, NEBRASKA

I hereby recommend that the Engineer's Certificate of Final Completion for Sanitary Sewer District 522T & Lift Station #22 be approved.


I further recommend that the Costs of Engineering be credited to Account No. 10033001-74516 from Account No. 53030055-85213 in the amount of \$31,770.50.

I further recommend that the City Council sit as a Board of Equalization on February 24, 2009 to determine benefits and levy special assessments.

Respectfully submitted,

Margaret Hornady
Mayor

I hereby recommend that the Engineer's Certificate of Final Completion for Sanitary Sewer District 522T & Lift Station #22 be approved.



Steven P. Riehle – City Engineer/Public Works Director

Margaret Hornady – Mayor

ENGINEER'S CERTIFICATE OF FINAL COMPLETION

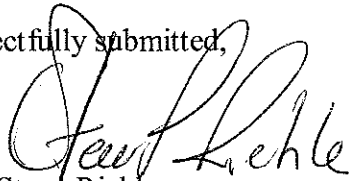
WATER MAIN DISTRICT NO. 453T

January 13, 2009

Water Main District No. 453T is located at the Central Nebraska Regional Airport. The project commences at Sky Park Road approximately one half (1/2) mile north of Capital Avenue, then northeasterly along the southerly side of the Airport to a point on the westerly side of the Grand Island Army Aviation Support Facility at the northeast corner of Shady Bend Road and Airport Road. The work on this main, as certified to be fully completed by Gary R. Mader, Utilities Director, is hereby accepted for the City of Grand Island, Nebraska, by me as Public Works Director in accordance with the provision on Section 16-650, R.R.S., 1943.

It is recommended that the City Council sit as Board of Equalization on February 24, 2009 to determine benefits and levy special assessments.

Respectfully submitted,



Steve Riehle

Public Works Director

WATER MAIN DISTRICT NO. 453T

January 13, 2009

TO THE MEMBERS OF COUNCIL
CITY OF GRAND ISLAND
GRAND ISLAND, NEBRASKA

I hereby recommend that the Engineer's Certificate of Final Completion for Water Main District No. 453T be approved.

I further recommend that the City Council sit as Board of Equalization on February 24, 2009, to determine benefits and levy special assessments.

Respectfully submitted,

Margaret Hornady,
Mayor

Connection Fee per Front Foot = \$61.1542640

			FRONTAGE	CONNECTION FEE
1	Owner:	Central Nebraska Regional Airport	per Agreement for service to GIAASF	\$103,145.61
	Address:	c/o Hall Co Airport Authority	3010 Airport Rd	
	City, State:	Grand Island, NE		
	Zipcode:	68801		
2	Owner:	Central Nebraska Regional Airport	3,662.88	\$224,000.74
	Address:	c/o Hall Co Airport Authority	Part of SE 1/4 of Sec 35, T12N, R9W	
	City, State:	Grand Island, NE	and Part of Sec 2, T11N, R9W	
	Zipcode:	68801	Commencing at the southeast corner of Section 35, T12N, R9W of the 6th P.M., Hall County, Nebraska; thence N1°17'28"W along the easterly line of said Section 35, a distance 552.48 feet; thence S88°17'20"W, a distance of 190.01 feet to the ACTUAL POINT OF BEGINNING; thence S44°10'13"W, a distance 3,804.84 feet, thence N31°01'21"W, a distance of 446.51 feet; thence N44°10'13"E, a distance of 3,662.88 feet; thence S54°20'52"E a distance of 444.91 feet; to the said Point of Beginning.	
3	Owner:	City of Grand Island, NE	66.67	\$4,077.15
	Address:	c/o Public Works Dept - Waste Water Div.	plus cost of 1" service	\$669.44
	City, State:	Grand Island, NE	TOTAL AMOUNT	\$4,746.59
	Zipcode:	68802	Lift Station 22	
			3340 Shady Bend Road	
			Part of SE 1/4 of Sec 35, T12N, R9W	
4	Owner:	City of Grand Island, NE	66.67	\$4,077.15
	Address:	c/o Parks and Recreation Div.	plus cost of 6" service	\$7,848.60
	City, State:	Grand Island, NE	TOTAL AMOUNT	\$11,925.75
	Zipcode:	68802	Jackrabbit Run Golf Course	
			2803 N Shady Bend Road	
			Part of NE 1/4 Sec 2, T11N, R9W	

CITY OF GRAND ISLAND UTILITIES DEPT
Water Main District 453T
 CNRA - GIAASF Helicopter Facility

Tap Fees, 12/12/2008

ITEM	DESCRIPTION	QUANTITIES	BID UNIT \$	TOTAL \$	1" Service	6" Service
C. 1.01	12" D.I.. Pipe (sj)	6,599.00 LF	30.57	201,731.43		
C. 1.02	6" D.I.. Pipe (sj)	179.00 LF	21.57	3,861.03		3,861.03
C. 1.03	6" R.S. Gate Valve	1.00 EA	606.56	606.56		606.56
C. 1.04	16"x16"x12" Tapping Sleeve	1.00 EA	3,236.98	3,236.98		
C. 1.05	12"x12"x 6" Tee (mj)	7.00 EA	333.24	2,332.68		2,332.68
C. 1.06	12"x45° Ell (mj)	3.00 EA	269.17	807.51		
C. 1.07	12"x22-1/2° Ell (mj)	2.00 EA	272.31	544.62		
C. 1.08	12"x11-1/4° Ell (mj)	0.00 EA	271.65	0.00		
C. 1.09	12" R.S. Gate Valve	2.00 EA	1,710.46	3,420.92		
C. 1.10	12" RS Tapping Valve	1.00 EA	2,485.51	2,485.51		
C. 1.11	Valve Box	5.00 EA	235.21	1,176.05		235.21
C. 1.12	Fire Hydrant Assembly	6.00 EA	1,266.74	7,600.44		
C. 1.13	Bell Joint Block	1.00 EA	522.03	522.03		
C. 1.14	Thrust Block	13.00 EA	179.04	2,327.52		358.08
C. 1.15	24"x 0.438" Steel Casing	110.00 LF	365.81	40,239.10		
C. 1.16	8 Mil Polyethylene	6,848.00 LF	1.54	10,545.92		275.66
C. 1.17	6" Cap	1.00 EA	133.33	133.33		133.33
C. 1.18	6" Retainer Gland	1.00 EA	46.05	46.05		46.05
C. 1.19	12" Cap w/ 2" Tap	0.00 EA	201.29	0.00		
C. 1.20	12" Retainer Gland	0.00 EA	91.04	0.00		
C. 1.21	1" Water Service Complete	1.00 EA	669.44	669.44	669.44	
C. 1.22	Remove & Replace Permanent Fence	LS LF	1,223.11	1,223.11		
C. 1.23	Temp. Construction Site Fence	LS LF	6,915.97	6,915.97		
C. 1.24	Regrade and Regravel Roadway	LS LF	1,741.28	1,741.28		
C. 1.25	R & R Unsuitable Backfill Material	200.00 CY	11.44	2,288.00		
C. 1.26	Contract Total			\$294,455.48		
	Labor - Install Slv Cplg - PO 304921			\$125.00		
	Labor - Installation Valve - PO 305014			\$597.00		
	Water Dept Supplier Materials			\$8,711.98		
	Water Dept Labor / OH			\$1,346.55		
	Construction Amount			\$305,236.01		
	GIS Soil Report - PO 304517			\$930.00		
	BWP - Office Suppiles - PO 304577			\$186.52		
	BWP - Office Suppiles - PO 304580			\$275.58		
	Infrastructure Markers - PO 305028			\$85.60		
	Mailings / Postage / Shipping			\$34.47		
	Survey Supplies			\$51.96		
	Engineering / Admin / Labor / OH			\$37,018.55		
	Engineering Amount			\$38,582.68		
	PROJECT TOTAL			\$343,818.69		

Tap Fee Per Front Foot = \$61.1542640

PROPERTY	FOOTAGE	TAP FEE \$	1" SERVICE \$	6" SERVICE \$	TOTAL FEE \$
GIAASF	per Agreement	\$103,145.61			\$103,145.61
CNRA	3,662.88	\$224,000.74			\$224,000.74
Jackrabbit Run Golf Course	66.67	\$4,077.15		\$7,848.60	\$11,925.75
WWTP - Lift Sta #22	66.67	\$4,077.15	\$669.44		\$4,746.59
	3,796.22	\$335,300.65	\$669.44	\$7,848.60	\$343,818.69

RESOLUTION 2009-4

WHEREAS, the City Engineer / Public Works Director and the Utilities Director for the City of Grand Island have issued a Certificate of Final Completion for Water Main District 453T; Sanitary Sewer District 522T; and Lift Station 22, certifying that the Diamond Engineering Company, of Grand Island, Nebraska, under contract, has completed the joint water main, sanitary sewer, lift station project according to the terms, conditions, and stipulations for such improvements; and

WHEREAS, the City Engineer / Public Works Director and Utilities Director recommend the acceptance of the projects; and

WHEREAS, the Mayor concurs with the recommendations of the City Engineer / Public Works Director and the Utilities Director.

NOW, THEREFORE, BE IT RESOLVED BY THE MAYOR AND COUNCIL OF THE CITY OF GRAND ISLAND, NEBRASKA, that the Certificate of Final Completion for Water Main District No. 453T; Sanitary Sewer District 522T; and Lift Station 22 is hereby confirmed.

- - -

Adopted by the City Council of the City of Grand Island, Nebraska, January 13, 2009.

Margaret Hornady, Mayor

Attest:

RaNae Edwards, City Clerk

ENGINEER'S CERTIFICATE OF FINAL COMPLETION

WATER MAIN DISTRICT NO. 453T

January 13, 2009

Water Main District No. 453T is located at the Central Nebraska Regional Airport. The project commences at Sky Park Road approximately one half (1/2) mile north of Capital Avenue, then northeasterly along the southerly side of the Airport to a point on the westerly side of the Grand Island Army Aviation Support Facility at the northeast corner of Shady Bend Road and Airport Road. The work on this main, as certified to be fully completed by Gary R. Mader, Utilities Director, is hereby accepted for the City of Grand Island, Nebraska, by me as Public Works Director in accordance with the provision on Section 16-650, R.R.S., 1943.

It is recommended that the City Council sit as Board of Equalization on February 24, 2009 to determine benefits and levy special assessments.

Respectfully submitted,

Steve Riehle
Public Works Director

WATER MAIN DISTRICT NO. 453T

January 13, 2009

TO THE MEMBERS OF COUNCIL
CITY OF GRAND ISLAND
GRAND ISLAND, NEBRASKA

I hereby recommend that the Engineer's Certificate of Final Completion for Water Main District No. 453T be approved.

I further recommend that the City Council sit as Board of Equalization on February 24, 2009, to determine benefits and levy special assessments.

Respectfully submitted,

Margaret Hornady,
Mayor