



# **City of Grand Island**

**Tuesday, September 23, 2008**

**Council Session**

## **Item E6**

**Public Hearing Concerning Acquisition of Utility Easement - 1116  
W. Oklahoma - Lot One, Preisendorf Subdivision - O'Neill**

**Staff Contact: Gary R. Mader**

# **Council Agenda Memo**

**From:** Robert H. Smith, Asst. Utilities Director

**Meeting:** September 23, 2008

**Subject:** Acquisition of Utility Easement –1116 West Oklahoma Avenue – Lot 1 Preisendorf Subdivision – Thomas and Jill O'Neill

**Item #'s:** E-6 & G-12

**Presenter(s):** Gary R. Mader, Utilities Director

## **Background**

Nebraska State Law requires that acquisition of property must be approved by City Council. The Utilities Department needs to acquire an easement relative to the property of Thomas and Jill O'Neill located behind 1116 West Oklahoma Avenue (Lot 1, Preisendorf Subdivision), in the City of Grand Island, Hall County, in order to have access to install, upgrade, maintain, and repair power appurtenances, including lines and transformers.

## **Discussion**

This easement will be used to place underground electrical cable and a pad-mounted transformer on the lot line between 1104 and 1116 West Oklahoma Avenue. The transformer will provide three phase electric service to both properties. The total easement, of which this acquisition is half, will be 25 ft. by 20 ft.

## **Alternatives**

It appears that the Council has the following alternatives concerning the issue at hand. The Council may:

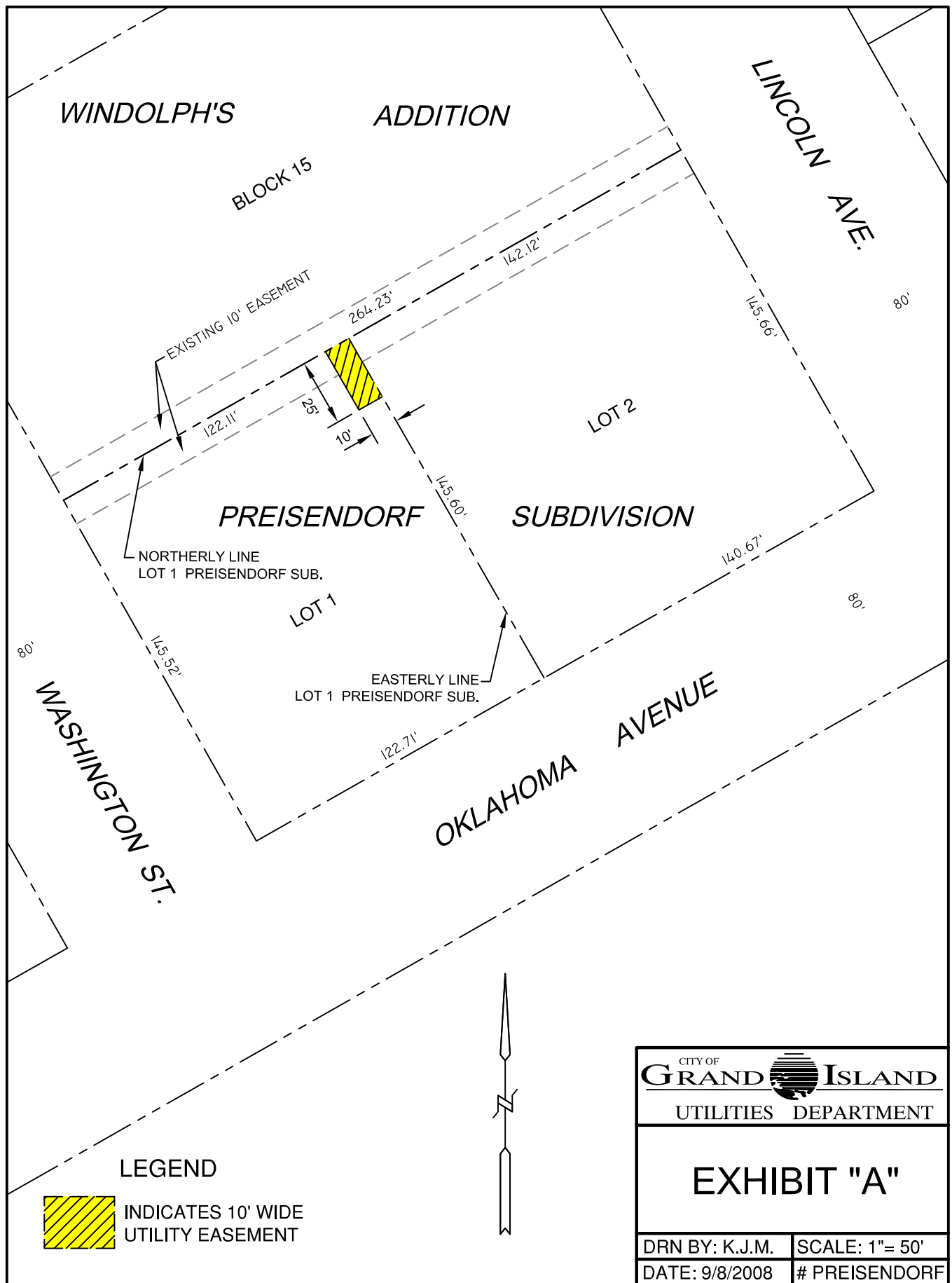
1. Make a motion to approve
2. Refer the issue to a Committee
3. Postpone the issue to future date
4. Take no action on the issue

## **Recommendation**

City Administration recommends that the Council approve the resolution for the acquisition of the easement for one dollar (\$1.00).

## **Sample Motion**

Move to approve acquisition of the Utility Easement.



<div><div>CITY OF</div><div><b>GRAND ISLAND</b></div><div>UTILITIES DEPARTMENT</div></div>	
<b>EXHIBIT "A"</b>	
DRN BY: K.J.M.	SCALE: 1" = 50'
DATE: 9/8/2008	# PREISENDORF