



City of Grand Island

Tuesday, July 08, 2008

Council Session

Item E3

**Public Hearing Concerning Acquisition of Ingress/Egress
Easement Access at 928 & 1004 Centre Street, Lots 2 and 3
Springdale 2nd Subdivision (Springdale LLC)**

Staff Contact: Steven P. Riehle, City Engineer/Public Works Direc

Council Agenda Memo

From: Steven P. Riehle, Public Works Director

Meeting: July 8, 2008

Subject: Public Hearing Concerning Acquisition of Ingress/Egress Easement at 928 & 1004 Centre Street, Lots 2 & 3 Springdale 2nd Subdivision (Springdale LLC)

Item #'s: E-3 & G-6

Presenter(s): Steven P. Riehle, Public Works Director

Background

Council action is necessary for the City of Grand Island to acquire Ingress/Egress Easements.

Discussion

An Ingress/Egress easement is needed to maintain access to Outlot A (west of Lots 2 & 3) in Springdale 2nd Subdivision. Outlot A is a detention cell. This access easement will consist of the north 10' feet of Lot 2 and the south 10' of Lot 3 in Springdale 2nd Subdivision. The easement will replace the current 10' wide easement at the back of Lots 1 through 7 in the same subdivision being vacated at this council meeting.

Alternatives

It appears that the Council has the following alternatives concerning the issue at hand. The Council may:

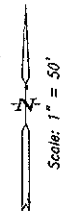
1. Move to approve
2. Refer the issue to a Committee
3. Postpone the issue to future date
4. Take no action on the issue

Recommendation

City Administration recommends that the Council conduct a Public Hearing and approve the Resolution for the acquisition of the Ingress/Egress Easement.

Sample Motion

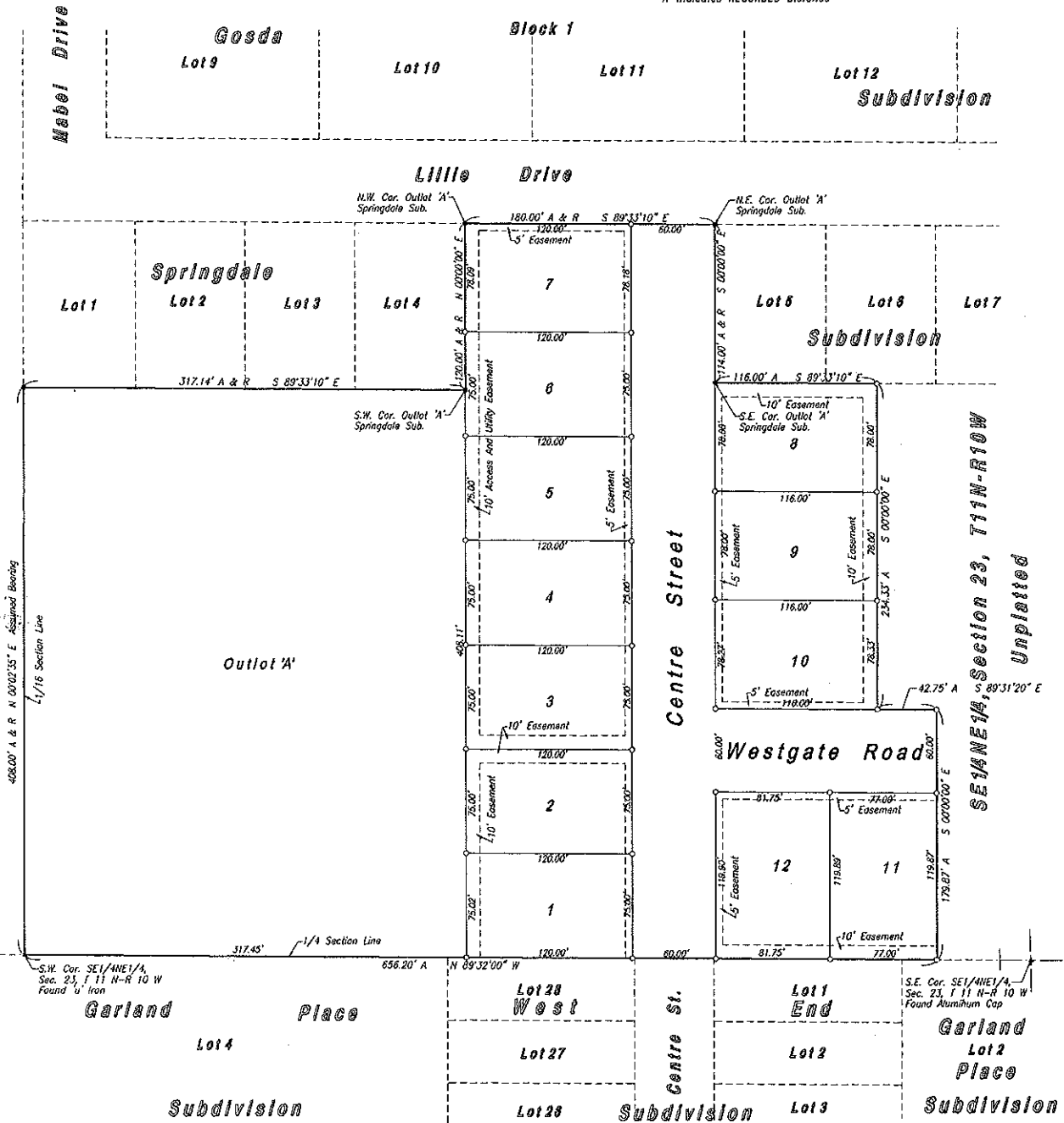
Move to approve the acquisition of the Ingress/Egress Easement.



LEGEND

- Indicates 1/2" Iron Pipe Found Unless Otherwise Noted
- Indicates 1/2" Iron Pipe w/Survey Cap Placed Unless Otherwise Noted
- A Indicates ACTUAL Distance
- R Indicates RECORDED Distance

SE 1/4 NE 1/4, Section 23, T11N-R10W
Unplatted



**SPRINGDALE SECOND SUBDIVISION
IN THE CITY OF GRAND ISLAND, NEBRASKA**

RECORDED AS INSTRUMENT NO.
0200802037
STATE OF NEBRASKA
COUNTY OF HALL
JAN 12 AM 8 50
REC'D OF REC'D