



City of Grand Island

Tuesday, May 13, 2008

Council Session

Item G8

#2008-123 - Approving Designating the North Side of Old Potash Highway from the Armory Driveway East for Approximately 350 Feet as No Parking

Staff Contact: Steven P. Riehle, City Engineer/Public Works Direc

Council Agenda Memo

From: Steven P. Riehle, Public Works Director

Meeting: May 13, 2008

Subject: Approving Designating the North Side of Old Potash from the Armory Driveway East for 345 Feet as No Parking

Item #'s: G-8

Presenter(s): Steven P. Riehle, Public Works Director

Background

Council action is required to designate No Parking on any public street.

Discussion

A request was submitted, by a concerned citizen, to eliminate parking on the North side of Old Potash Highway beginning at a point due north of the northwest corner Lot 1 Ryder Park Subdivision to a point 345 feet west. The roadway in this area is not wide enough for vehicles to park and causes traffic congestion when this is used for parking.

Alternatives

It appears that the Council has the following alternatives concerning the issue at hand. The Council may:

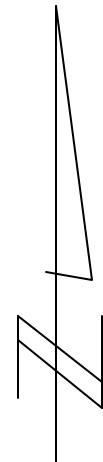
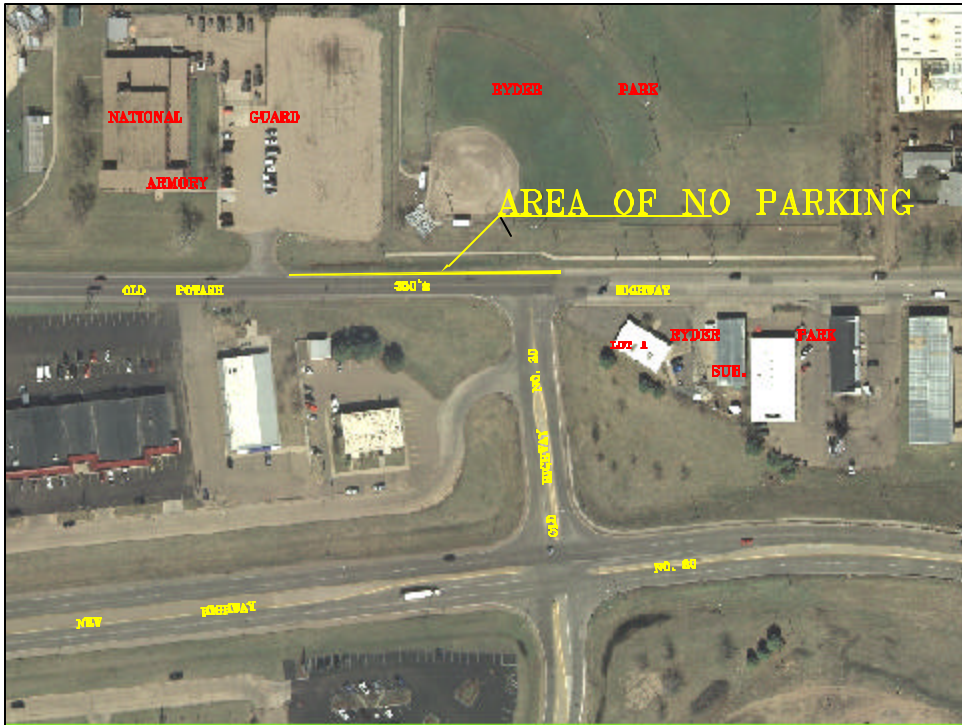
1. Move to approve
2. Refer the issue to a Committee
3. Postpone the issue to future date
4. Take no action on the issue

Recommendation

City Administration recommends that the Council approve the resolution designating the North side of Old Potash Highway beginning at a point due north of the northwest corner Lot 1 Ryder Park Subdivision to a point 345 feet west.

Sample Motion

Move to approve the resolution.



CITY OF
GRAND ISLAND
PUBLIC WORKS DEPARTMENT

DATE: 4/23/08
DRN BY: L.D.C.
SCALE: NONE

NO PARKING AREA
ALONG OLD POTASH HWY.

R E S O L U T I O N 2008-123

WHEREAS, the City Council, by authority of §22-77 of the Grand Island City Code, may by resolution, entirely prohibit or fix a time limit for the parking and stopping of vehicles in or on any public street, public property, or portion thereof; and

WHEREAS, due to potential traffic congestion and safety issues, the Public Works Department is requesting that No Parking be allowed along the north side of Old Potash Highway beginning at a point due north of the northwest corner Lot 1 Ryder Park Subdivision to a point 345 feet west; and

WHEREAS, it is recommended that such restricted parking request be approved.

NOW, THEREFORE, BE IT RESOLVED BY THE MAYOR AND COUNCIL OF THE CITY OF GRAND ISLAND, NEBRASKA, that:

1. A No Parking Zone is hereby designated along the north side of Old Potash Highway beginning at a point due north of the northwest corner Lot 1 Ryder Park Subdivision to a point 345 feet west.
2. The City's Street Division shall erect and maintain the signs necessary to effect the above regulation.

- - -

Adopted by the City Council of the City of Grand Island, Nebraska, May 13, 2008.

Margaret Hornady, Mayor

Attest:

RaNae Edwards, City Clerk

Approved as to Form <input type="checkbox"/> _____ May 7, 2008 <input type="checkbox"/> City Attorney
