



City of Grand Island

Tuesday, February 26, 2008

Council Session

Item E2

**Public Hearing on Acquisition of Sanitary Sewer Easement in the
SE 1/4 of the NE 1/4 of Section 23-11-10 between Springdale
Second Subdivision & North Road (Karen J. Bredthauer)**

Staff Contact: Steven P. Riehle, City Engineer/Public Works Direc

Council Agenda Memo

From: Steven P. Riehle, Public Works Director

Meeting: February 26, 2008

Subject: Public Hearing on Acquisition of Sanitary Sewer Easement in the SE 1/4 of the NE 1/4 of Section 23-11-10 between Springdale Second Subdivision and North Road

Item #'s: E-2 & G-14

Presenter(s): Steven P. Riehle, Public Works Director

Background

Nebraska State Statutes stipulate that the acquisition of property requires a public hearing be conducted with the acquisition approved by the City Council. A Sanitary Sewer Utilities Easement is needed in unplatted land in the SE 1/4 of the NE 1/4 of Section 23-11-10 between Springdale Second Subdivision and North Road to accommodate sanitary sewer. The easement will allow for the construction, operation, maintenance, extension, repair, replacement, and removal of sanitary sewer within the easement.

Discussion

The subdivision is being developed in phases and sanitary sewer to serve the current phase must be extended across a future phase where an easement or street right-of-way does not exist. The new easement will be twenty (20') feet wide and will provide an easement to place sanitary sewer at this location.

Alternatives

It appears that the Council has the following alternatives concerning the issue at hand. The Council may:

1. Move to approve
2. Refer the issue to a Committee

3. Postpone the issue to future date – this will delay the development of this subdivision
4. Take no action on the issue – this will prohibit the development of this subdivision

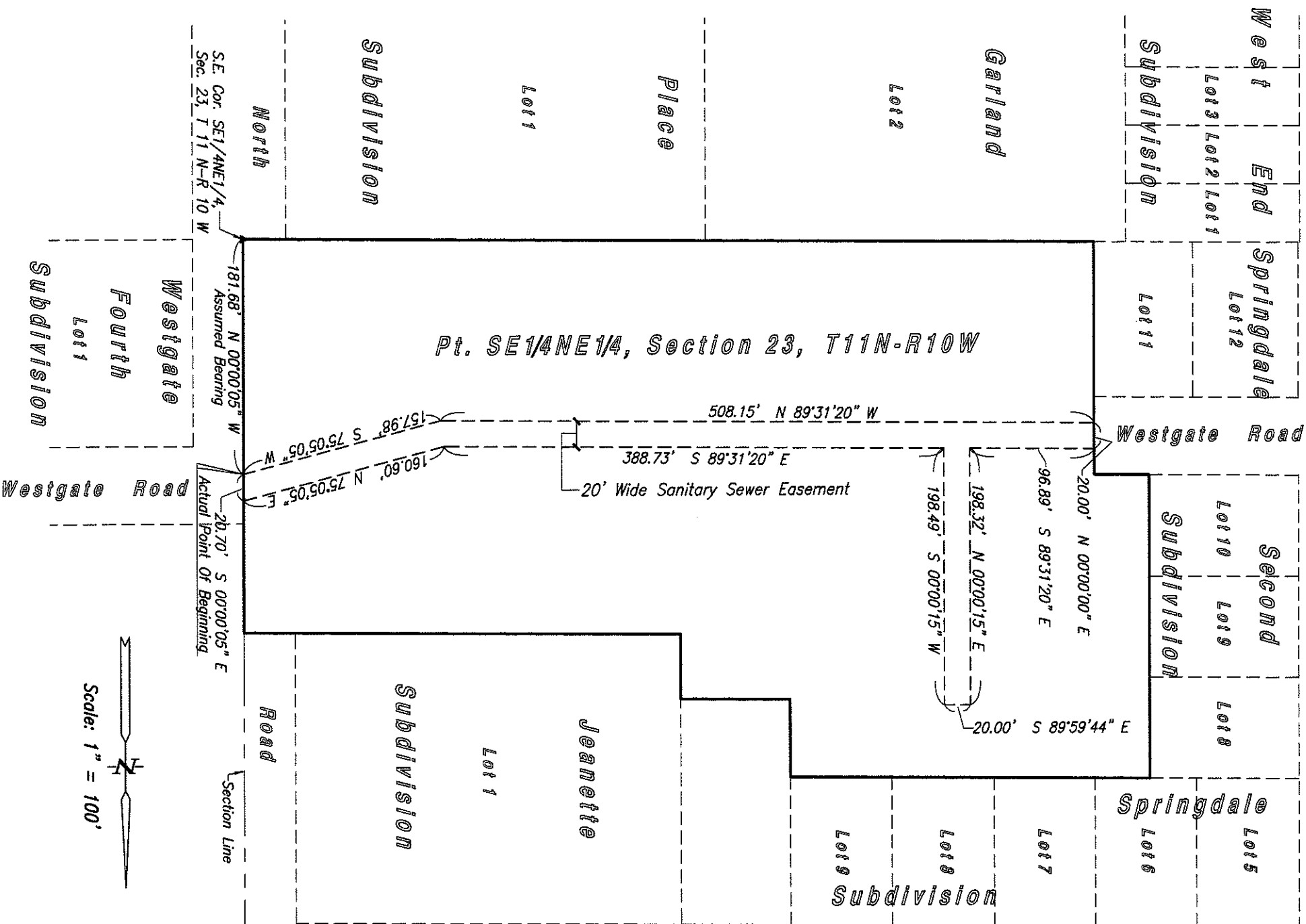
Recommendation

City Administration recommends that the Council conduct a Public Hearing and approve acquisition of the Easement.

Sample Motion

Move to approve the acquisition of the Easement.

Centre St.



Sanitary Sewer Easement

EXHIBIT 'A'

Date: February 7, 2008



R. GCKWELL AND ASSOC.
ENGINEERING & SURVEYING

2510 NORTH WEBB ROAD, GRAND ISLAND, NEBRASKA 68802 P.O. BOX 549
E-MAIL: surveyor@computer-concepts.com PHONE (308) 382-1472 FAX (308) 382-1423

Sheet No. 1 Of 2