



City of Grand Island

Tuesday, February 12, 2008

Council Session

Item E1

Public Hearing on the One & Six Year Street Improvement Program

Staff Contact: Steven P. Riehle, City Engineer/Public Works Direc

Council Agenda Memo

From: Steven P. Riehle, Public Works Director

Meeting: February 12, 2008

Subject: Approving One & Six Year Street Improvement Program

Item #'s: E-1 & I-1

Presenter(s): Steven P. Riehle, Public Works Director

Background

Adoption of a One and Six Year Street Improvement Program is mandatory by State Law as part of the requirements to receive approximately three million dollars of state gas tax funds each year. The Public Works Department goes through a process to prioritize street projects taking into consideration many factors such as:

- Availability of funds
- Condition of the street
- Traffic Counts
- Eligibility for State/Federal funds
- Redevelopment patterns
- Public/Council input

The City engages in a public process to assure input into the policy making process. The proposed One & Six Year Street Improvement Program is a result of the following steps:

- Tuesday, January 22, 2008 – City Council referred plan to Regional Planning Commission
- Wednesday, February 6, 2008 – Regional Planning Commission conducted a Public Hearing and forwarded the recommendation to the City Council
- Tuesday, February 12, 2008 – City Council hears presentation from staff, conducts Public Hearing and passes a Resolution adopting the plan.

Discussion

A public hearing was conducted, testimony received and discussion held on the One & Six Year Street Improvement Program at the Grand Island/Hall County Regional Planning Commission meeting on February 6, 2007.

The proposed round-a-bout at the intersection of the North Road and Capital Avenue intersection was discussed and the Planning Commission recommended leaving the project in year 2009. The Community Development and Public Works Departments are pursuing safety funds from the Nebraska Department of Roads for the round-a-bout.

The preliminary engineering for an underpass on Broadwell Avenue at the Union Pacific Railroad tracks, originally planned for 2013, was moved up to 2009. Declining traffic counts on Broadwell Avenue were discussed at the Regional Planning Commission meeting. The traffic counts are included for review in the council packet. The Regional Planning Commission also discussed a lesser preliminary engineering study that could be performed for the Broadwell Avenue underpass, but left the \$1.2 million preliminary engineering in the program. The city would use federal aid STP funds for 80% of the preliminary engineering costs.

The One and Six Year Street Improvement Program was recommended for approval by the Planning Commission is attached.

Alternatives

It appears that the Council has the following alternatives concerning the issue at hand. The Council may:

1. Move to approve
2. Refer the issue to a Committee
3. Postpone the issue to future date
4. Take no action on the issue

Recommendation

City Administration recommends the Council conduct a Public Hearing and approve the One and Six Year Street Improvement Program.

Sample Motion

Move to approve the One and Six Year Street Improvement Program.

2008 Construction Season						
(All costs in \$1,000s)						
No.	Project Description	Total Project	State Federal Other	City STP	City G.O. Bond	City Cap. Impr. Fund
Street Construction						
M310- 490	Annual Paving Petition Program (2008)	\$200			\$200	
M310- 500	Widen Capital Avenue - Moores Creek Drainway to Webb Road - Construction	\$4,500	\$3,375			\$1,125
M310- 351	Hwy 30 - Grant to Greenwich - NDOR Project (FY 2007)	\$5,322	\$4,258	\$1,064		
M310- 508	Wasmer Cell Construction	\$735	\$588			\$147
M310- 537	Realign Walnut Middle School entrance with 15th St. & install traffic signal	\$270	\$270			
M310- 407	S. Locust - HWY 34 to I-80 - Additional Landscaping	\$60	\$48			\$12
Street Resurfacing						
M310- 491	Annual Resurfacing Program (2008)	\$750				\$750
Drainage & Flood Control						
M310- 493	Concrete Lining of Drainage Ditches(2008)	\$50				\$50
M310- 461	Moores,Prairie, & Silver Creek Flood Control - Construction for Northwest Grand Island	\$825	\$450			\$375
M310- 514	Detention Cell/Ditch Restoration	\$50				\$50
M310- 382	Moores Creek Drainage - along North Road from Rogers Well to S. of Old Potash HWY	\$209				\$209
Other						
M310- 385	Geographic Information System (Continued development and maintenance)	\$25				\$25
M310- 515	Railroad Quiet Zone	\$150				\$150
M310- 389	Hike/Bike Trail Const. along Floodway - Hall County Park to S. Locust	\$435	\$348			\$87
TOTALS		\$13,581	\$9,337	\$1,064	\$200	\$2,980

		2009 Construction Season				
			(All costs in \$1,000s)			
	No.	Project Description	Total Project	State Federal Other	City STP	City Cap. Impr. Fund
		Street Construction				
M310-	501	Annual Paving Petition Program (2009)	\$750			\$750
M310-	409	S. Locust Grading and Median Drains for New Lanes	\$875		\$700	\$175
M310-	341	S. Locust I-80 to Floodway, Surfacing New Lanes	\$3,314		\$2,651	\$663
M310-		Construct Left Turn Lane on North Road @ NW High School	\$56			\$56
M310-	535	Realign Barr Mid. School entrance with Riverside Dr & signal @ Stolley/Adams	\$360	\$306		\$54
M310-	487A	Stolley Park Rd widening, Locust to Fonner Park Ent. (Eng Design & ROW)	\$150			\$150
M310-	545	Traffic Signal @ Rae Road/HWY 281	\$135			\$135
M310-	353	Faidley Ave. - Moores Creek Ditch to North Rd.	\$1,250			\$1,250
M310-	538	Round-a-bout - Capital Ave/North Rd Intersection	\$360			\$360
M310-	458	Traffic Signal - HWY 281/Wildwood Dr.	\$170	\$85		\$85
M310-		Broadwell/UPRR Grade Separation (Preliminary Engineering)	\$1,200	\$960		\$240
		Street Resurfacing				
M310-	503	Annual Resurfacing Program (2009)	\$500			\$500
		Drainage & Flood Control				
M310-	485	PVIP Cells & Drainage	\$127			\$127
M310-	507	Independence Avenue Drainage(Design/ROW)	\$80			\$80
M310-	505	Concrete Lining of Drainage Ditches(2009)	\$50			\$50
M310-	461	Moores,Prairie, & Silver Creek Flood Control - Construction	\$825	\$450		\$375
M310-	516	Detention Cell/Ditch Restoration	\$50			\$50
		Other				
M310-	385	Geographic Information System (Continued development and maintenance)	\$25			\$25
M310-	408	Hike/Bike Bridge Superstructure over two Platte River Channels	\$390	\$312		\$78
M310-	518	Railroad Quiet Zone	\$150			\$150
M310-	447	Hike/Bike Trail Construction - State St. to Veterans Home	\$600	\$480		\$120
TOTALS			\$11,417	\$2,593	\$3,351	\$2,000
						\$3,473

2010 Construction Season						
(All costs in \$1,000s)						
No.	Project Description	Total Project	State Federal Other	City STP	City G.O. Bond	City Cap. Impr. Fund
Street Construction						
M310- 519	Annual Paving Petition Program (2010)	\$750			\$750	
M310- 533	Husker Highway Widening - from 1/4 Mi. west of HWY 281 easterly to Highway 281	\$1,200		\$900		\$300
M310-	Intersection Improvements @ North Rd & Stolley Park Rd near UPRR	\$146				\$146
M310- 487	Stolley Park Rd widening, Locust to Fonner Park Entrance (Construction)	\$1,200			\$1,200	
M310- 267	Two Bridge Replacements - Blaine @ Wood River (Engineering Design)	\$45				\$45
M310- 540	Intersection Improvements @ 13th & North Road	\$300				\$300
Street Resurfacing						
M310- 522	Annual Resurfacing Program (2010)	\$500				\$500
Drainage & Flood Control						
M310- 523	Annual Major Drainage Development (2010)	\$300				\$300
M310- 524	Concrete Lining of Drainage Ditches(2010)	\$50				\$50
M310- 461	Moore's, Prairie, & Silver Creek Flood Control - Construction	\$825	\$450			\$375
M310- 525	Detention Cell/Ditch Restoration	\$50				\$50
M310- 485	PVIP Cells & Drainage	\$272				\$272
M310- 507	Independence Ave. Drainage (Construction)	\$350				\$350
Other						
M310- 385	Geographic Information System (Continued development and maintenance)	\$25				\$25
M310- 527	Misc. Safety Enhancements	\$150				\$150
M310- 431	Hike/Bike Trail Construction, S. Locust - Floodway to I-80	\$600	\$480			\$120
TOTALS:						
		\$6,763	\$930	\$900	\$1,950	\$2,983

2011 Construction Season						
(All costs in \$1,000s)						
No.	Project Description	Total Project	State Federal Other	City STP	City G.O. Bond	City Cap. Impr. Fund
Street Construction						
M310- 541	Annual Paving Petition Program (2011)	\$750			\$750	
M310- 89	Capital Ave - Webb to Broadwell Ave	\$1,000				\$1,000
M310- 498	S. Locust - Illumination Lighting S. City Limits to I-80	\$1,000		\$800		\$200
M310- 521	Swift Road - WWTP to Shady Bend Rd	\$450				\$450
Street Resurfacing						
M310- 542	Annual Resurfacing Program (2011)	\$500				\$500
Drainage & Flood Control						
M310- 543	Annual Major Drainage Development (2011)	\$300				\$300
M310- 544	Concrete Lining of Drainage Ditches(2011)	\$50				\$50
M310- 461	Moore's, Prairie, & Silver Creek Flood Control - Construction	\$825	\$450			\$375
M310- 525	Detention Cell/Ditch Restoration	\$50				\$50
Other						
M310- 385	Geographic Information System (Continued development and maintenance)	\$25				\$25
M310- 414	Hike/Bike Trail Construction, S. Locust to Mormon Island. (Parallel to I-80)	\$600	\$600			
M310- 527	Misc. Safety Enhancements	\$150				\$150
M310- 517	Hike/Bike Trail Const. - Veterans Home to Eagle Scout Park	\$600	\$480			\$120
TOTALS		\$6,300	\$1,530	\$800	\$750	\$3,220

		2012 Construction Season					
			(All costs in \$1,000s)				
	No.	Project Description	Total Project	State Federal Other	City STP	City G.O. Bond	City Cap. Impr. Fund
Street Construction							
M310-	546	Annual Paving Petition Program (2012)	\$750			\$750	
M310-	520	Capital Ave - Broadwell to St. Paul Road	\$1,000			\$1,000	
		State St/Diers Ave - Intersection					
M310-	528	Improvements	\$390				\$390
M310-	539	3rd Street Widening - Adams to Eddy St.	\$90				\$90
		Highway 34 - Highway 281 to Locust -					
M310-	411	NDOR Project	\$1,125	\$900	\$225		
		Two Bridge Replacements - Blaine @					
M310-	267	Wood River (Construction)	\$250	\$120			\$130
		Left Turn Lane on Husker HWY @					
M310-		Heartland Luthern High School	\$62				\$62
		13th Street - Intersection Improvements @					
M310-		Mansfield Rd/Redwood Rd	\$62				\$62
		Resurface Wildwood Rd - U.S. HWY 281					
M310-		to Locust St.	\$876	\$701			\$175
		Widen Eddy Street Underpass to 5-lanes					
M310-	334	on south end	\$175				\$175
Street Resurfacing							
M310-	547	Annual Resurfacing Program (2012)	\$500				\$500
Drainage & Flood Control							
		Annual Major Drainage Development					
M310-	548	(2012)	\$500				\$500
M310-	549	Concrete Lining of Drainage Ditches(2012)	\$50				\$50
		Moores,Prairie, & Silver Creek Flood					
M310-	461	Control - Construction (Due remainder of	\$825	\$450			\$375
		Project)					
M310-	525	Detention Cell/Ditch Restoration	\$50				\$50
		Moores Creek Drainage - along North					
M310-	511	Road from Old Potash HWY to Edna Dr.	\$150				\$150
Other							
M310-	517	Hike/Bike Trail Const. - Veterans Home to	\$600	\$480			\$120
		Eagle Scout Park					
M310-	385	Geographic Information System (Continued	\$25				\$25
		development and maintenance)					
M310-	527	Misc. Safety Enhancements	\$150				\$150
TOTALS			\$7,630	\$2,651	\$225	\$1,750	\$3,004

2013 and After Construction						
(All costs in \$1,000s)						
No.	Project Description	Total Project	State Federal Other	City STP	City G.O. Bond	City Cap. Impr. Fund
Street Construction						
M310- 352	Hwy 30 - Hwy 281 to west City Limits - NDOR Project	\$20,068	\$16,054	\$4,014		
M310-	Annual Paving Petition Program (2013)	\$750			\$750	
M310- 499	Grade Separation Broadwell @ UPRR	\$10,800	\$9,720	\$1,080		
M310- 502	Grade Separation Shady Bend Road @ UPRR	\$16,000	\$14,400	\$1,600		
M310- 536	Traffic Signal - Locust St./Fonner Park Heartland Event Center Center Entrance	\$150				\$150
M310-	Grade Separation North Road @ UPRR	\$7,600	\$6,840	\$760		
M310- 480	Independence Avenue Paving - Shanna St. to Manchester Ave.	\$1,050			\$1,050	
Street Resurfacing						
M310-	Annual Resurfacing Program (2013)	\$500				\$500
Drainage & Flood Control						
M310-	Annual Major Drainage Development (2013)	\$500				\$500
M310-	Concrete Lining of Drainage Ditches(2013)	\$50				\$50
M310- 461	Moore's, Prairie, & Silver Creek Flood Control - Construction (Due remainder of Project)	\$3,300	\$1,800			\$1,500
M310- 525	Detention Cell/Ditch Restoration	\$50				\$50
M310- 459	Construct Drainway from CCC area to Wood River	\$425				\$425
Other						
M310- 526	Hike/Bike Trail Const. along Floodway - S. Locust to Platte River	\$600	\$480			\$120
M310- 385	Geographic Information System (Continued development and maintenance)	\$25				\$25
M310- 416	BLDG Improvements at West Yard	\$375				\$375
M310- 527	Misc. Safety Enhancements	\$150				\$150
M310- 497	Illuminating Lighting - HWY 281, Stolley to Old Potash	\$250				\$250
TOTALS		\$62,643	\$49,294	\$7,454	\$1,800	\$4,095

February 7, 2008

Honorable Margaret Hornady, Mayor
And Members of the Council
City Hall 100 E. 1st Street
Grand Island, NE 68801

Dear Members of the Council:

RE: ADOPTION OF THE 1 & 6 YEAR STREET IMPROVEMENT PLAN FOR THE CITY OF GRAND ISLAND.

At the meeting of the Regional Planning Commission, held February 6, 2008, the above item was considered following a public hearing. This item is to adopt the new 1 & 6 year street improvement plan for the City of Grand Island.

Steve Riehle, Public Works Director spoke and explained the projects and goals for the 1 & 6 year street improvement plan. He explained the proposed round-a-bout at North Road and Capital Avenue and the preliminary design project for a Broadwell grade separation in detail.

Planning Commissioners asked about the round-a-bout; specifically regarding the size of the project, how close the road would come to adjacent properties and the amount of property necessary for the project. They also asked about truck traffic through the intersection. Riehle stated that based on the preliminary design and discussions with neighboring property owners a few years back that it did not appear that the road would move much closer than where people currently drive. Some property acquisition would be necessary but most of that area is currently being used as roadway when people cut the corners on a turn. This area is not a truck route so only deliveries are permitted. The design of the round a bout would accommodate occasional truck traffic.

Dan Fogland, of Copycat questioned the need for the Broadwell Grade separation. He feels that dealing with the crossing at the edges of town makes more sense. He stated that traffic volumes on Broadwell appear to be declining.

A review of the traffic volumes, as provided by Riehle, shows that the numbers do vary from year to year but that there do not appear to be any significant declines over the last 17 years. Based on comments from the UPRR as quoted in the Grand Island Independent the number of trains has increased significantly.

Following further consideration and discussion of the proposed projects, a motion was made by Bredthauer and 2nd by Miller to approve and recommend that the City Council **approve** and **adopt** the 1 & 6 year street plan for the City of Grand Island.

A roll call vote was taken and the motion passed unanimously by the 10 members present (Miller, Amick, O'Neill, Ruge, Hayes, Reynolds, Haskins, Bredthauer, Heineman, Snodgrass).

Yours truly,

Chad Nabity AICP
Planning Director

City of Grand Island
1 & 6 year Street Improvement Plan
2008 through 2013

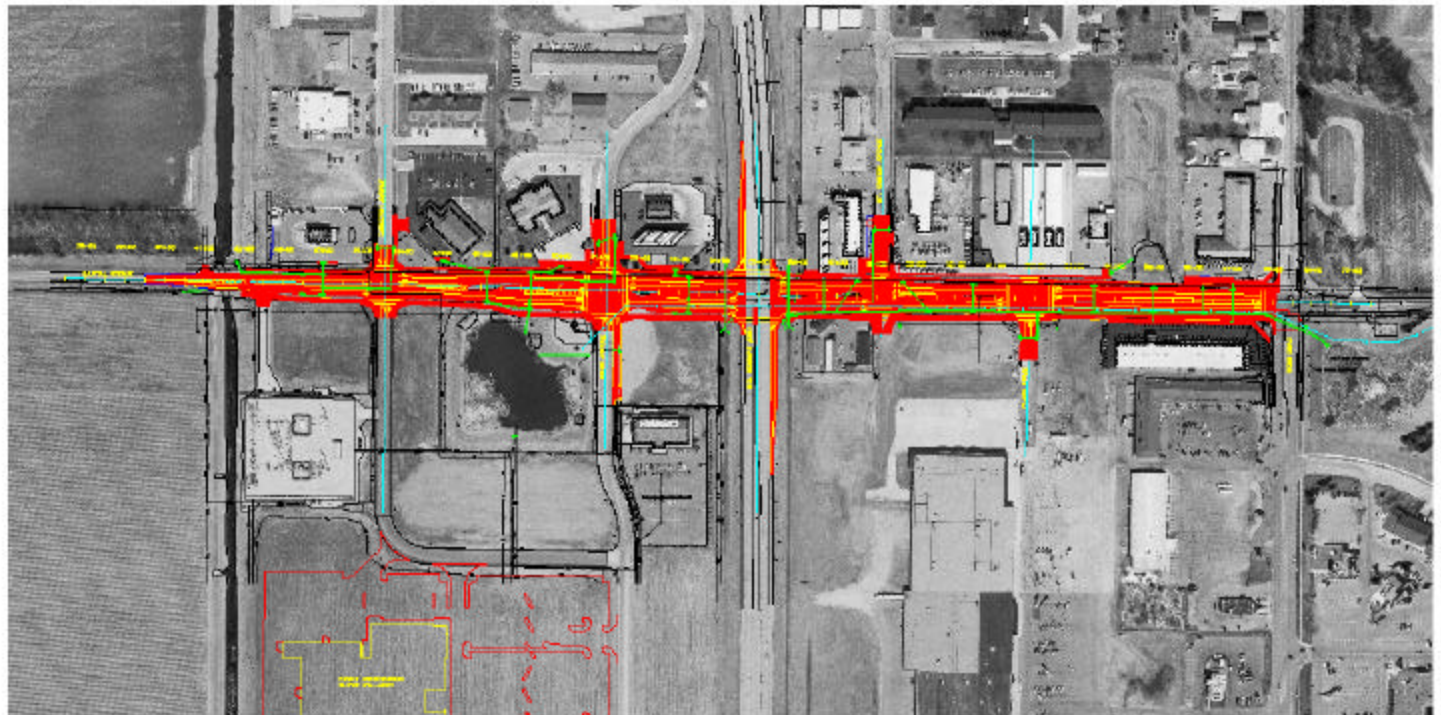
Regional Planning Commission
February 6, 2008

Capital Avenue Widening

2008
Start

2009
Finish

LOCATION MAP



US Hwy 30 Widening

Scheduled for
March 2008
Start

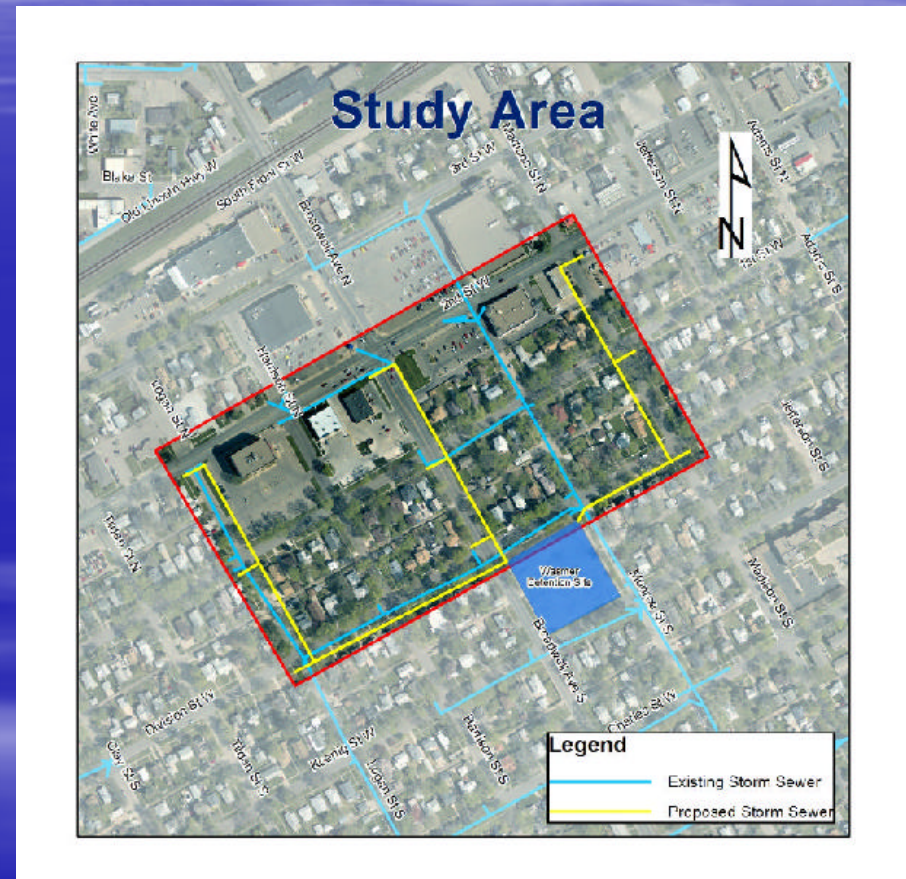


US Hwy 30 Widening

- NDOR Project
- Grant to Greenwich
- Upgrade to 5 lane roadway
- Improve Storm Sewer Drainage
- Roadway construction complete – fall 2008
- Wrap-up work in Spring 2009

Wasmer Detention Cell

- Start - May 2008
- Completion – Summer 2008
- Improves drainage capacity of US Hwy 30
- Not a flow-through cell



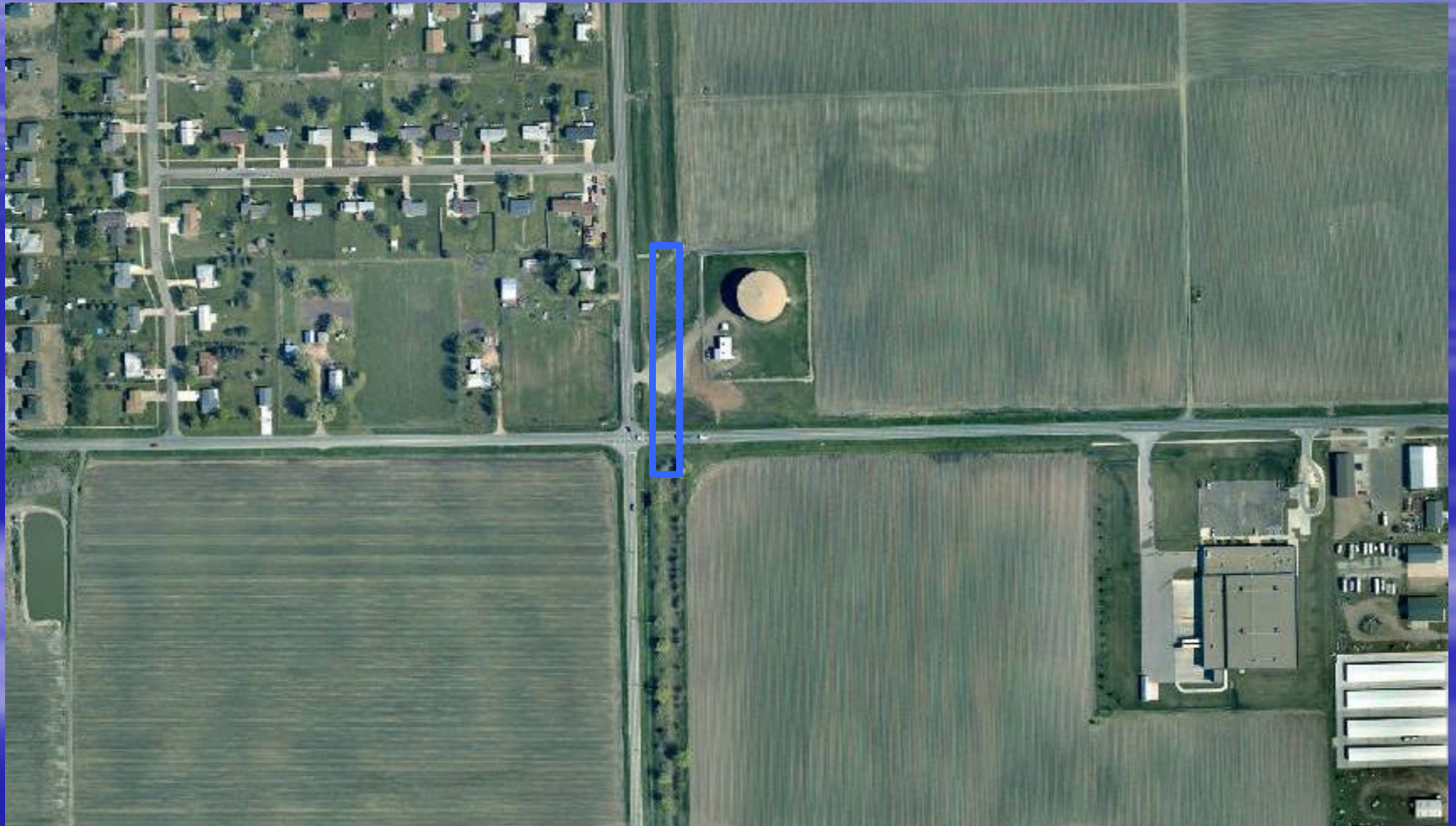
Walk to Walnut SRTS Project - 2008

Realign
Driveway
To match
Up to 15th

Traffic
Signal

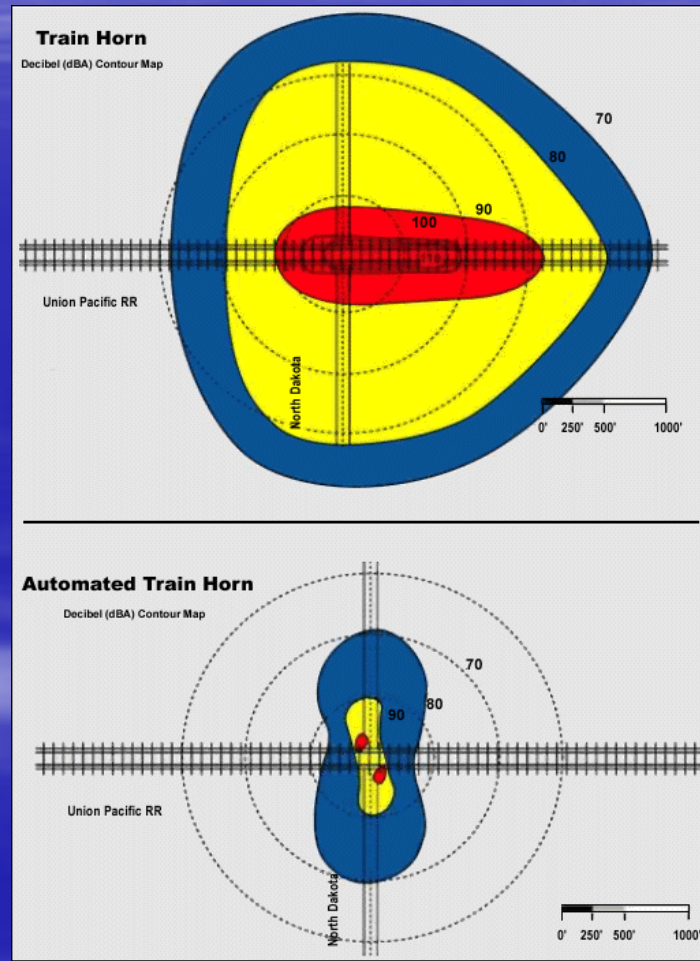


Extend Moores Creek Ditch - 2008



Quiet Zones on UPRR Corridor - 2008

- Oak
- Pine
- Walnut
- Elm



Other 2008 Projects

- Annual Paving Petition Program
- Annual Asphalt Resurfacing Program
- Concrete Lining of Ditches
- Moores, Prairie and Silver Creek Flood Control
- Detention Cell Ditch Restoration
- Hike/Bike Trail Construction along Floodway
 - Hall County Park to South Locust

South Locust 4-Lanes

- 2009 Construction



NWHS Left Turn Lane - 2009



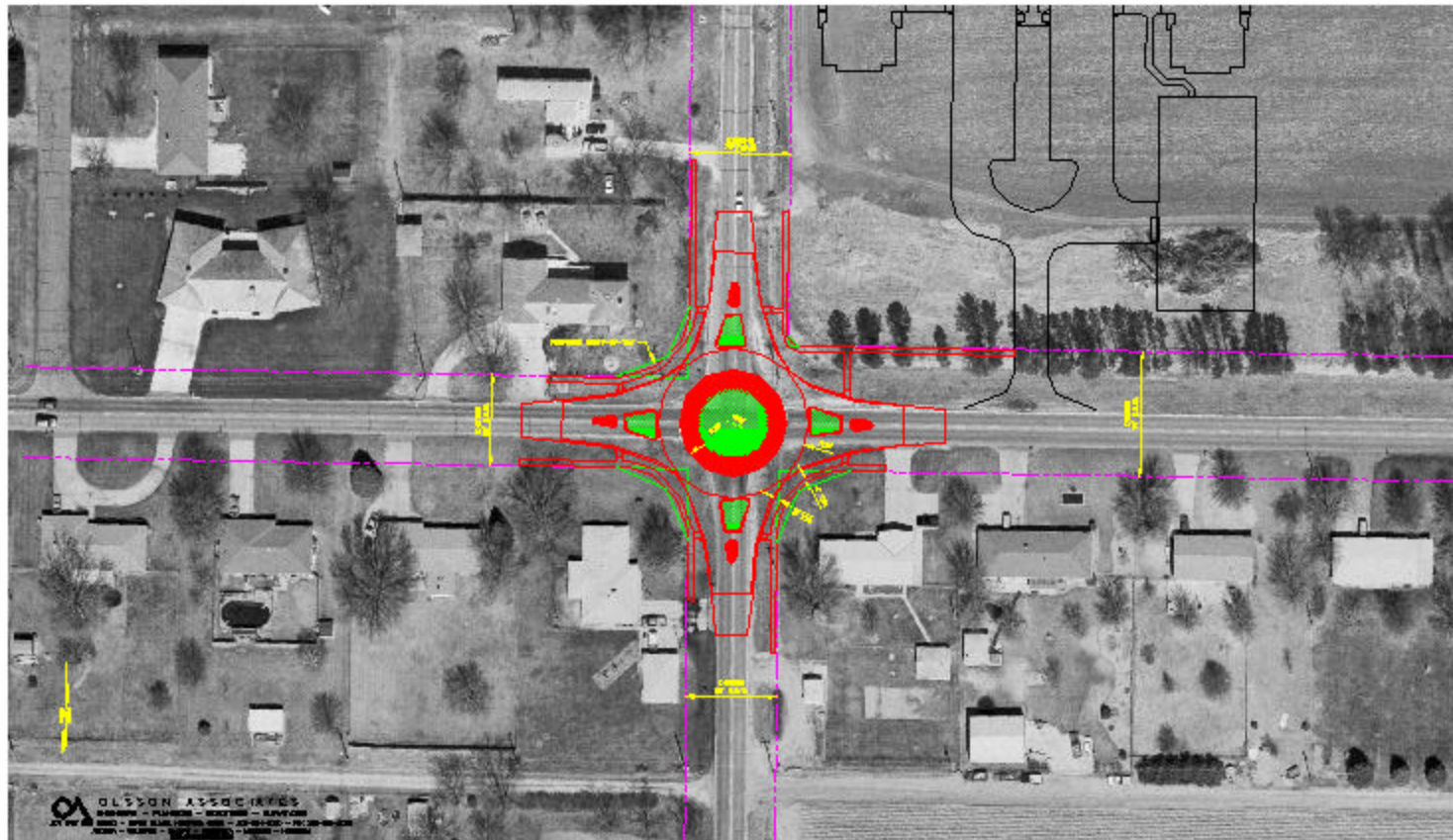
Realign Barr MS Entrance - 2009



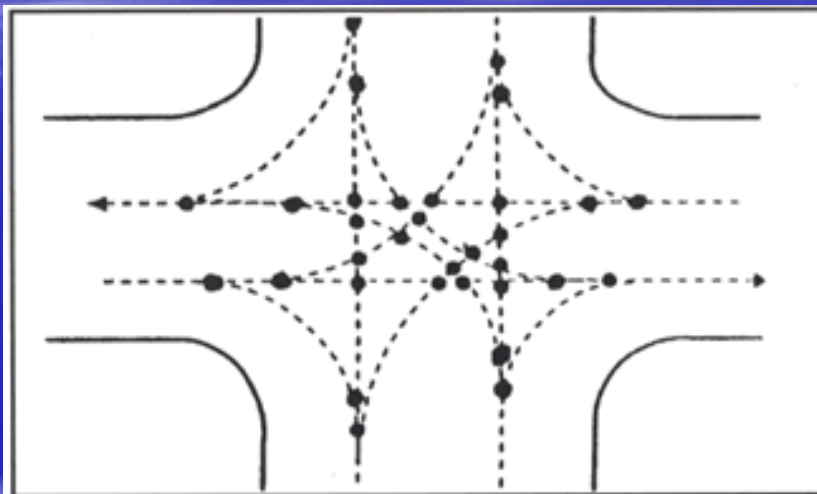
Extend Faidley Ave to North Road - 2009



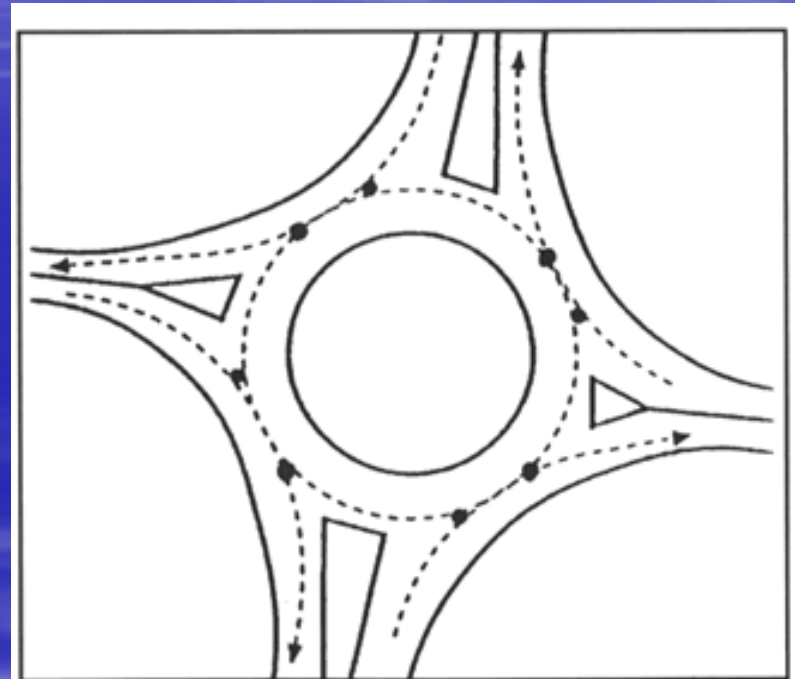
North Road & Capital Ave Round-A-Bout 2009



Round-A-Bouts reduce Conflicts



Standard Intersection



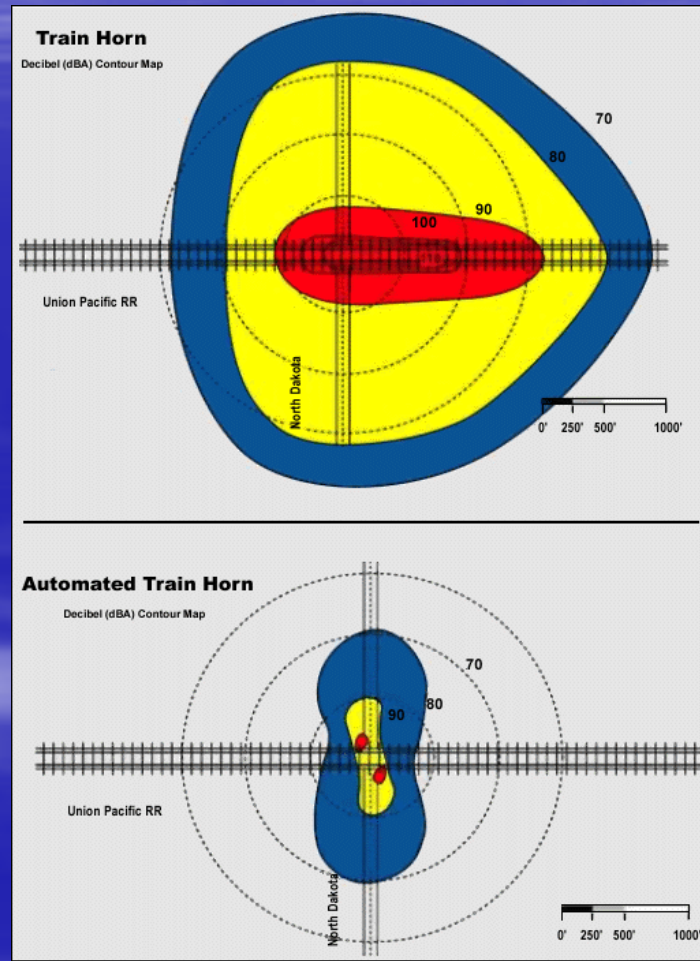
Roundabout Intersection

● = Conflict Point

Figure 2

Quiet Zones on UPRR Corridor - 2009

- Lincoln
- Broadwell
- Custer



2009- Study/Preliminary Engineering for underpass on Broadwell Avenue at the Union Pacific Railroad Tracks



Traffic Counts at UPRR

Traffic Counts					
	1990	1995	2000	2005	2007
Broadwell Ave	11180	11870	11861	12729	11074
Eddy St	12345	12305	9477	9809	9740
Sycamore St	6760	7645	7524	7390	5670
Blaine / Custer			10031	9216	10122
Lincoln St			2223	1436	1220
Elm St			941		788
Walnut St	4500	4544	3744	3513	3430
Pine St					1586
Oak St					2960

Other 2009 Projects

- Annual Paving Petition Program
- Stolley Park Road widening east of Locust
- Traffic Signal at US Hwy 281 and Rae Road
- Traffic Signal at US Hwy 281 and Wildwood Drive
- Independence Ave North of Manchester – Ditch Design
- Annual Asphalt Resurfacing Program
- Concrete Lining of Ditches
- Moores, Prairie and Silver Creek Flood Control
- Detention Cell Ditch Restoration
- Hike/Bike Bridge Superstructure over two Platte River Channels
- Hike/Bike Trail Construction
 - State Street to Veterans Home