



City of Grand Island

Tuesday, August 28, 2007

Council Session

Item E2

**Public Hearing Concerning Acquisition of Utility Easement - South
Side of the Airport between Sky Park & Shady Bend Roads - Hall
County Airport Authority**

Staff Contact: Gary R. Mader

Council Agenda Memo

From: Robert H. Smith, Asst. Utilities Director

Meeting: August 28, 2007

Subject: Acquisition of Utility Easement – South of the Airport
between Sky Park & Shady Bend Roads - Hall Co. Airport
Authority

Item #'s: E-2 & G-3

Presenter(s): Gary R. Mader, Utilities Director

Background

Nebraska State Law requires that acquisition of property must be approved by City Council. The Utilities Department needs to acquire an easement relative to the property of the Hall County Airport Authority, located south of the Airport between Sky Park Road and Shady Bend Road, in the City of Grand Island, Hall County, in order to have access to install, upgrade, maintain, and repair all utilities.

Discussion

This easement will be used to locate water, sewer and natural gas utilities from Sky Park Road, across the southern end of the airport to north of the golf course and finally to the new National Guard Helicopter facility at Airport Road and Shady Bend Road. These utilities will provide service to the new helicopter facility.

Alternatives

It appears that the Council has the following alternatives concerning the issue at hand. The Council may:

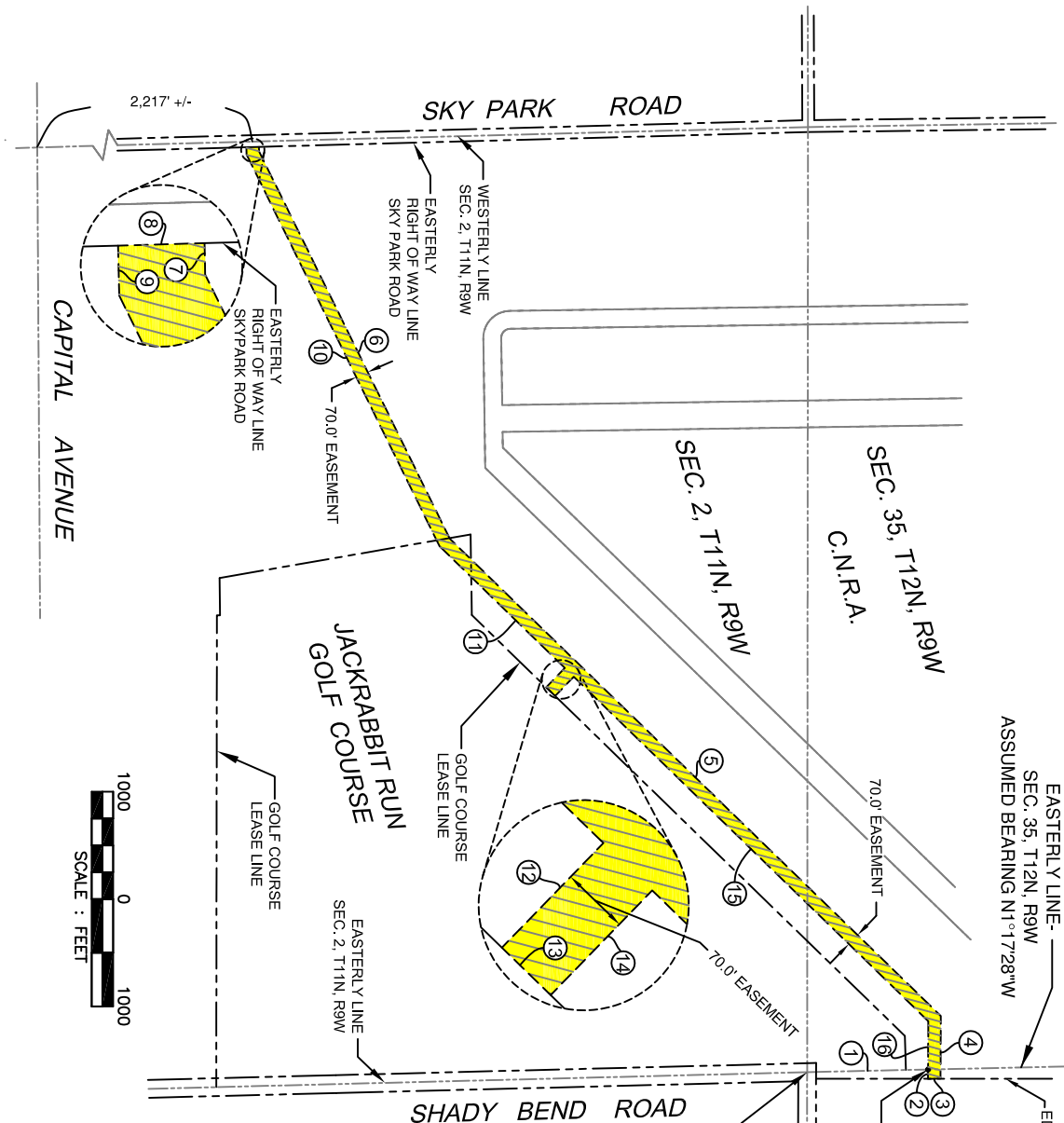
1. Make a motion to approve
2. Refer the issue to a Committee
3. Postpone the issue to future date
4. Take no action on the issue

Recommendation

City Administration recommends that the Council approve the resolution for the acquisition of the easement for one dollar (\$1.00).

Sample Motion

Motion to approve acquisition of the Utility Easement.



Course No.	Bearing	Distance in feet
1	N01°17'28"W	675.96
2	S89°40'49"E	53.04
3	N01°17'28"W	70.03
4	N89°40'49"W	350.31
5	S44°10'13"W	3827.00
6	S63°46'20"W	2413.32
7	S88°42'43"W	25.39
8	S01°32'51"E	70.00
9	N88°42'43"E	40.55
10	N63°46'20"E	2440.89
11	N44°10'13"E	976.22
12	S45°49'47"E	150.00
13	N44°10'13"E	70.00
14	N45°49'47"W	150.00
15	N44°10'13"E	2763.06
16	S89°40'49"E	269.42

CITY OF
GRAND ISLAND
UTILITIES DEPARTMENT

EXHIBIT "A"
70' Wide
Utility Easement

DRN BY: P.F.G. SCALE: 1" = 1000'

DATE: 07/31/2007 FILE: CNRA-GIAASF