



City of Grand Island

Tuesday, June 12, 2007

Council Session

Item E2

**Public Hearing Concerning Acquisition of Utility Easement -
Along the South R-O-W Line of State Street, East of North Road -
Little B's Corporation**

Staff Contact: Gary R. Mader

Council Agenda Memo

From: Robert H. Smith, Asst. Utilities Director

Meeting: June 12, 2007

Subject: Acquisition of Utility Easement – Along the Right-of-Way Line of State Street East of North Road – Little B's Corporation

Item #'s: E-2 & G-11

Presenter(s): Gary R. Mader, Utilities Director

Background

Nebraska State Law requires that acquisition of property must be approved by City Council. The Utilities Department needs to acquire an easement relative to the property of Little B's Corporation, located along the Right-of-Way line of State Street east of North Road, in the City of Grand Island, Hall County, in order to have access to install, upgrade, maintain, and repair power appurtenances, including lines and transformers.

Discussion

This easement will be used to place three phase underground electrical feeder cable along the south side of State Street. The feeder will provide electrical power and provide back-up to the two subdivisions of Summerfield Estates and Prairie Acres. The Subdivisions have not been filed for the area along State Street, but are expected to be in the future.

The requested easement is the same area that will be dedicated on future plats, so it will not have a negative impact on the property.

Alternatives

It appears that the Council has the following alternatives concerning the issue at hand. The Council may:

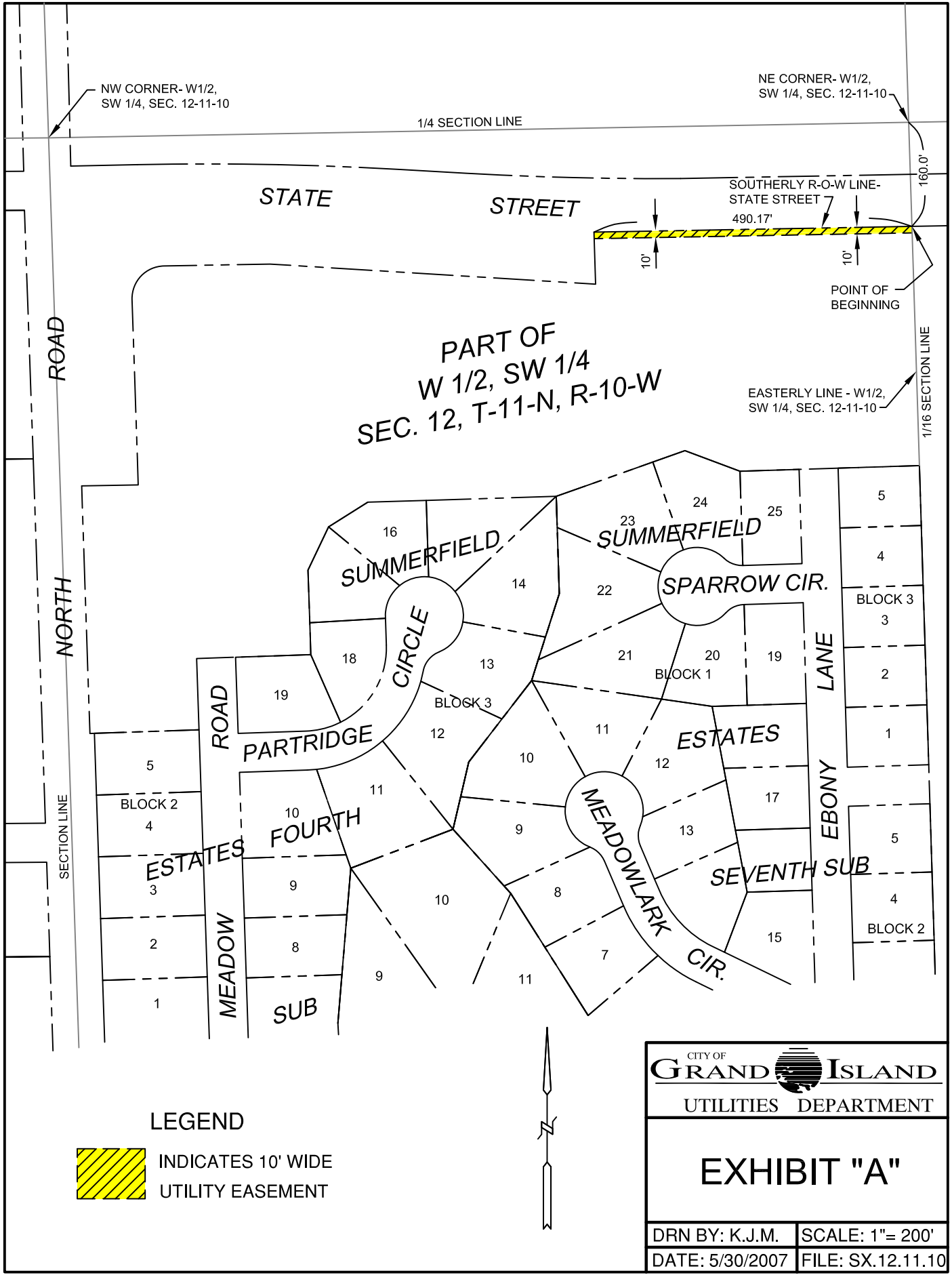
1. Make a motion to approve
2. Refer the issue to a Committee
3. Postpone the issue to future date
4. Take no action on the issue

Recommendation

City Administration recommends that the Council approve the resolution for the acquisition of the easement for one dollar (\$1.00).

Sample Motion

Motion to approve acquisition of the Utility Easement.



NW CORNER- W1/2,
SW 1/4, SEC. 12-11-10

1/4 SECTION LINE

NE CORNER- W1/2,
SW 1/4, SEC. 12-11-10

STATE STREET

SOUTHERLY R-O-W LINE-
STATE STREET
490.17'

POINT OF
BEGINNING

PART OF
W 1/2, SW 1/4
SEC. 12, T-11-N, R-10-W

EASTERLY LINE - W1/2,
SW 1/4, SEC. 12-11-10

1/16 SECTION LINE

ROAD

NORTH

SECTION LINE

ROAD
MEADOW

PARTRIDGE

FOURTH

SUB

SUMMERFIELD
CIRCLE

SUMMERFIELD
SPARROW CIR.

ESTATES

MEADOWLARK
CIR.

EBONY
LANE

SEVENTH SUB

LEGEND



INDICATES 10' WIDE
UTILITY EASEMENT



CITY OF
GRAND ISLAND

UTILITIES DEPARTMENT

EXHIBIT "A"

DRN BY: K.J.M.

SCALE: 1"= 200'

DATE: 5/30/2007

FILE: SX.12.11.10