



# **City of Grand Island**

**Tuesday, March 13, 2007**

**Council Session**

## **Item G3**

**Approving Preliminary Plat for Woodland Park Fifth Subdivision**

**Staff Contact: Chad Nabity**

# **Council Agenda Memo**

**From:** Regional Planning Commission

**Meeting:** March 13, 2007

**Subject:** Woodland Park Fifth Subdivision – Preliminary Plat

**Item #'s:** G-3

**Presenter(s):** Chad Nabity AICP, Regional Planning Director

## **Background**

This preliminary plat proposes to create 45 lots on a tract of land located in the West Half of the Southeast Quarter of Section Two, Township Eleven North, Range Ten West of the 6<sup>th</sup> P.M., Grand Island, Hall County, Nebraska. This land consists of approximately 9.28 acres. City sewer and water is available to the property and will be extended to serve all lots. The proposed streets are 37 foot concrete curb and gutter standard city streets.

## **Discussion**

The preliminary plat for Woodland Park Fifth Subdivision was considered by the Regional Planning Commission at the March 7, 2007 meeting. A motion was made by Miller and seconded by Reynolds to approve the plat contingent on storm sewer installation in the Independence Avenue ditch, consistent with the original preliminary plat. A roll call vote was taken and the motion carried with 8 members present voting in favor (Eriksen, Miller, O'Neill, Ruge, Reynolds, Niemann, Monter, Snodgrass).

## **Alternatives**

It appears that the Council has the following alternatives concerning the issue at hand. The Council may:

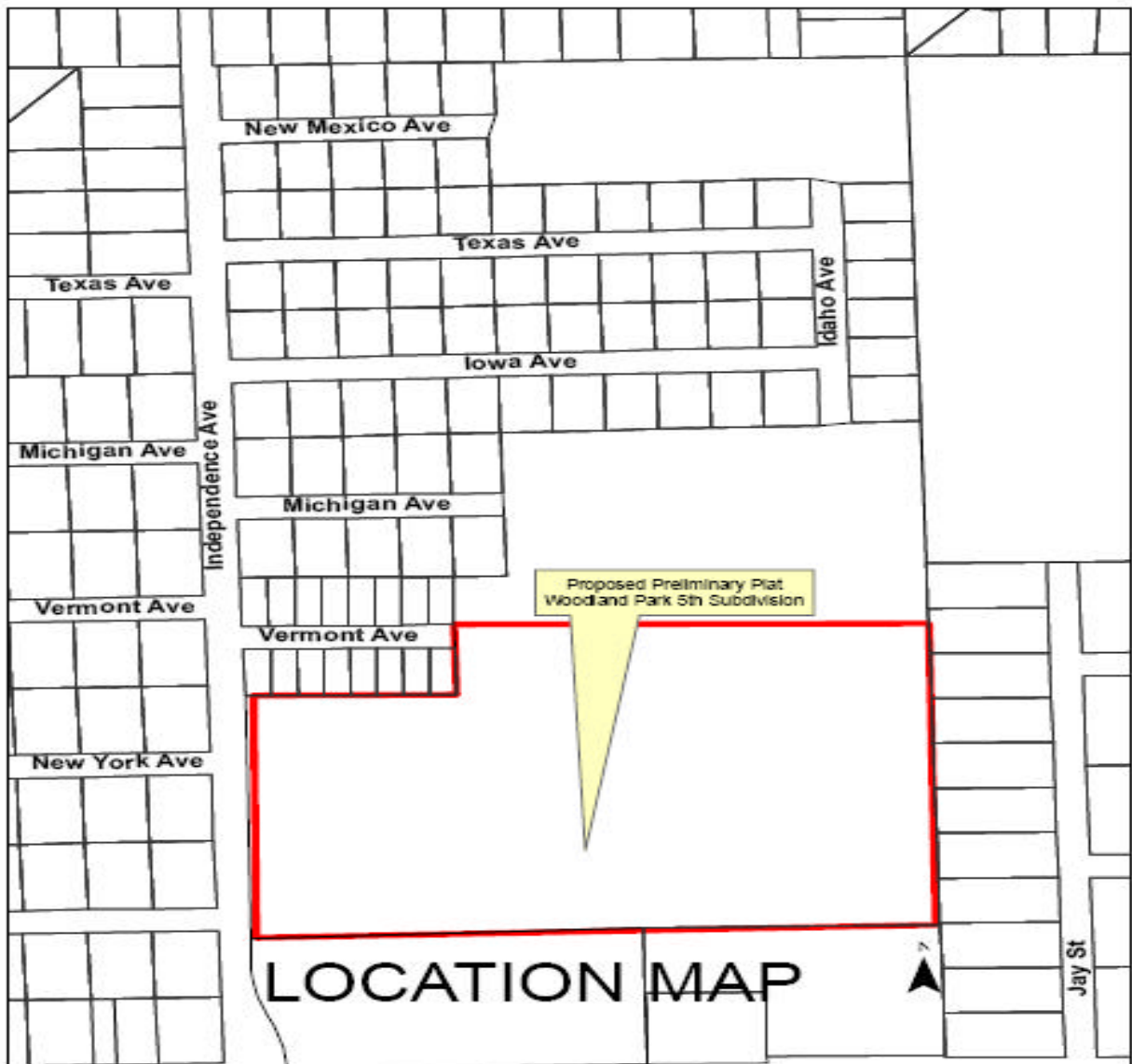
1. Move to approve
2. Refer the issue to a Committee
3. Postpone the issue to future date
4. Take no action on the issue

## **Recommendation**

City Administration recommends that the Council approve the preliminary plat contingent on storm sewer installation in the Independence Avenue ditch consistent with the original preliminary plat.

## **Sample Motion**

Motion to approve as recommended.



[illegible][illegible]

**OWNER**  
EXCEL DEVELOPMENT GROUP  
3101 CENTRAL PARK DRIVE  
LINCOLN, NEBRASKA

**LAND SURVEYOR AND ENGINEER**  
REGA ENGINEERING GROUP, INC...  
4527 PIONEERS BOULEVARD, SUITE A  
LINCOLN, NEBRASKA

LS-502  
U.S. GOVERNMENT PRINTING OFFICE  
WASHINGTON, D. C. 20540

DATE: 02/15/07  
DESIGNED BY: FBS  
DRAWN BY: FBS  
CHECKED BY: TC/FBS/DR  
CREW: JH/PC

WOODLAND PARK FIFTH SUBDIVISION  
PRELIMINARY PLAT  
WOODLAND PARK TOWNHOMES  
GRAND ISLAND, NEBRASKA  
LOT LAYOUT

## LEGEND



**REGA**  
ENGINEERING

- ENGINEERING
- PLANNING
- LAND SURVEYING

1 of 3

ISSUED FOR:	DATE:	BY:
CITY OF GRAND ISLAND	2-15-07	FBS