



# City of Grand Island

Tuesday, February 13, 2007

Council Session

## Item G6

**#2007-30 - Approving Final Plat and Subdivision Agreement for  
Prairie Acres Subdivision**

Staff Contact: Chad Nabity

# **Council Agenda Memo**

**From:** Regional Planning Commission  
**Meeting:** February 13, 2007  
**Subject:** Prairie Acres Subdivision - Final Plat  
**Item #'s:** G-6  
**Presenter(s):** Chad Nabity AICP, Regional Planning Director

## **Background**

This final plat proposes to create 76 lots on a tract of land comprising a part of the East Half of the Southwest Quarter (E1/2 SW1/4) of Section Twelve (12), Township Eleven (11) North, Range Ten (10) west of the 6<sup>th</sup> P.M., in the city of Grand Island, Hall County, Nebraska. This land consists of approximately 28.894 acres.

## **Discussion**

The final plat for Prairie Acres Subdivision was considered by the Regional Planning Commission at the February 7, 2007 meeting under the Consent Agenda. A motion was made by Hayes and seconded by Reynolds to approve the final plat as presented. A roll call vote was taken and the motion carried with 10 members present voting in favor (Miller, Amick, O'Neill, Ruge, Hayes, Reynolds, Monter, Eriksen, Niemann, Snodgrass).

## **Alternatives**

It appears that the Council has the following alternatives concerning the issue at hand. The Council may:

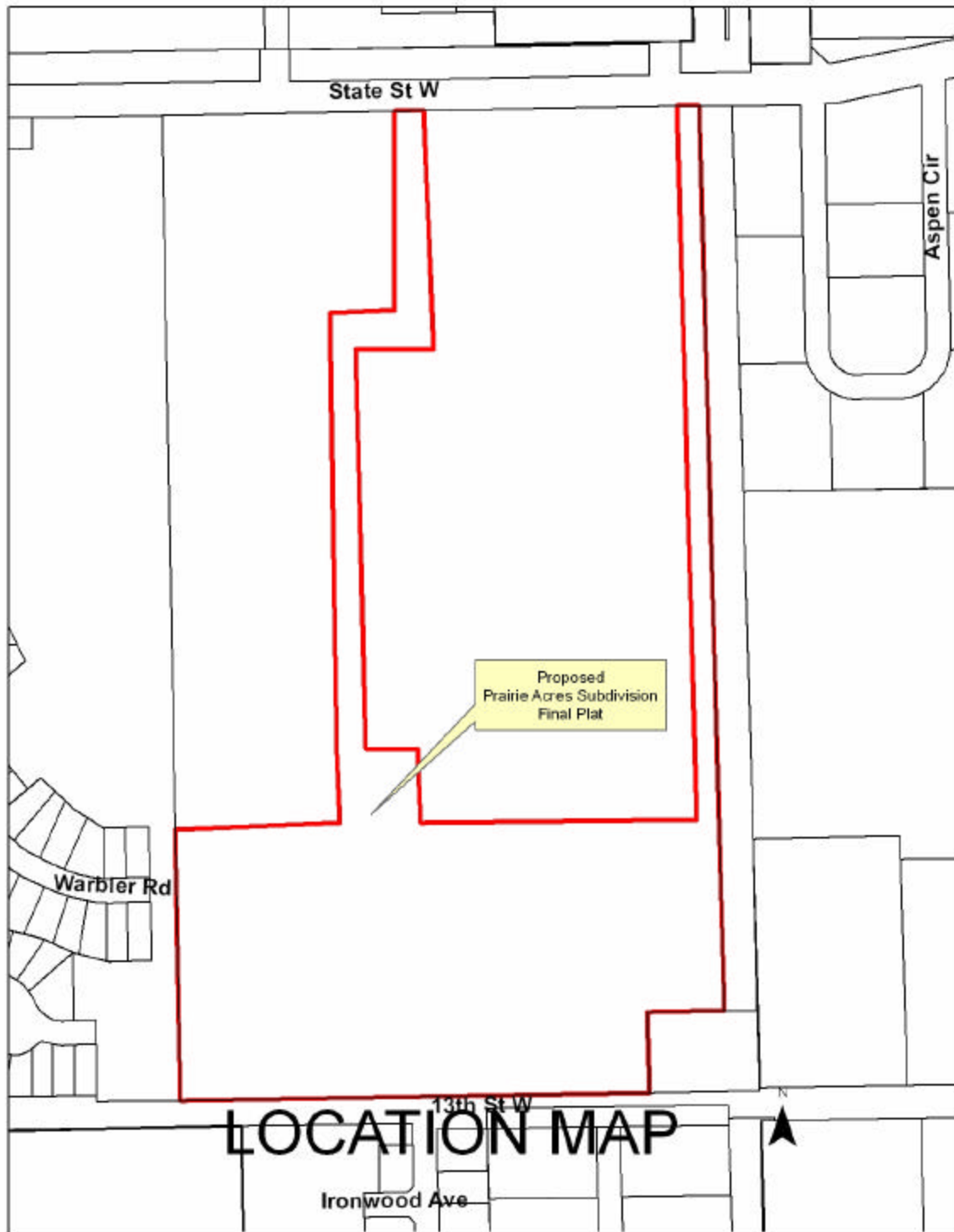
1. Move to approve
2. Refer the issue to a Committee
3. Postpone the issue to future date
4. Take no action on the issue
- 5.

## **Recommendation**

City Administration recommends that the Council approve the final plat as presented.

## Sample Motion

Motion to approve as recommended.





## Prairie Acres Subdivision Summary

### Developer/Owner

Shafer Commercial Properties LLC  
Joel Shafer, Member Manager  
920 Diers Avenue  
Grand Island, NE 68803  
(308) 398-1722

76 Lots including 74 house or duplex lots and 2 large apartment/office lots.

**Size:** 28.894 Acres

**Zoning** R4 High Density Residential

**Road Access:** Public Streets will be built throughout the subdivision. All proposed streets are 37' wide concrete curb and gutter.

**Water:** City water will be extended throughout the subdivision.

**Sewer:** City sewer will be extended throughout the subdivision.



RESOLUTION 2007-30

WHEREAS, Shafer Commercial Properties, LLC, , as owner, has caused to be laid out into lots, a tract of land comprising a part of the North Half of the East Half of the Southwest Quarter (E½ SW¼) of Section Twelve (12), Township Eleven (11) North, Range Ten (10), West of the 6<sup>th</sup> P.M., in the City of Grand Island, Hall County, Nebraska, under the name of PRAIRIE ACRES SUBDIVISION, and has caused a plat thereof to be acknowledged by it; and

WHEREAS, a copy of the plat of such subdivision has been presented to the Boards of Education of the various school districts in Grand Island, Hall County, Nebraska, as required by Section 19-923, R.R.S. 1943; and

WHEREAS, a form of subdivision agreement has been agreed to between the owner of the property and the City of Grand Island.

NOW, THEREFORE, BE IT RESOLVED BY THE MAYOR AND COUNCIL OF THE CITY OF GRAND ISLAND, NEBRASKA, that the form of subdivision agreement hereinbefore described is hereby approved, and the Mayor is hereby authorized to execute such agreement on behalf of the City of Grand Island.

BE IT FURTHER RESOLVED that the final plat of PRAIRIE ACRES SUBDIVISION, as made out, acknowledged, and certified, is hereby approved by the City Council of the City of Grand Island, Nebraska, and the Mayor is hereby authorized to execute the approval and acceptance of such plat by the City of Grand Island, Nebraska.

- - -

Adopted by the City Council of the City of Grand Island, Nebraska, February 13, 2007.

---

Margaret Hornady, Mayor

Attest:

---

RaNae Edwards, City Clerk

Approved as to Form	☐ _____
February 8, 2007	☐ City Attorney