



# City of Grand Island

Tuesday, September 26, 2006

Council Session

## Item E2

**Public Hearing Concerning Acquisition of Utility Easement - 1417  
S. Shady Bend Road - Dennhardt**

Staff Contact: Gary R. Mader

# **Council Agenda Memo**

**From:** Robert H. Smith, Asst. Utilities Director  
**Meeting:** September 26, 2006  
**Subject:** Acquisition of Utility Easement – 1417 S. Shady Bend Road - Dennhardt  
**Item #'s:** E-2 & G-7  
**Presenter(s):** Gary R. Mader, Utilities Director

## **Background**

Nebraska State Law requires that acquisition of property must be approved by City Council. The Utilities Department needs to acquire an easement relative to the property of Leland B. and Judy A. Dennhardt, located along the east side of Shady Bend Road, approximately 1,900' north of Stolley Park Road, south of 1417 S. Shady Bend Road, located in Hall County, in order to have access to install, upgrade, maintain, and repair power appurtenances, including lines and transformers.

## **Discussion**

This easement will be used to place a pad-mounted single phase transformer to provide electric service. There will be a new home constructed on the property.

## **Alternatives**

It appears that the Council has the following alternatives concerning the issue at hand. The Council may:

1. Make a motion to approve
2. Refer the issue to a Committee
3. Postpone the issue to future date
4. Take no action on the issue

## **Recommendation**

City Administration recommends that the Council approve the resolution for the acquisition of the easement for one dollar (\$1.00).

## **Sample Motion**

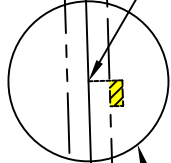
Motion to approve acquisition of the Utility Easement.

NW CORNER, NW 1/4, SW 1/4  
SEC. 24, T-11-N, R-9-W

WESTERLY LINE  
NW 1/4, SW 1/4  
SEC. 24, T-11-N, R-9-W

33.0

495.25'



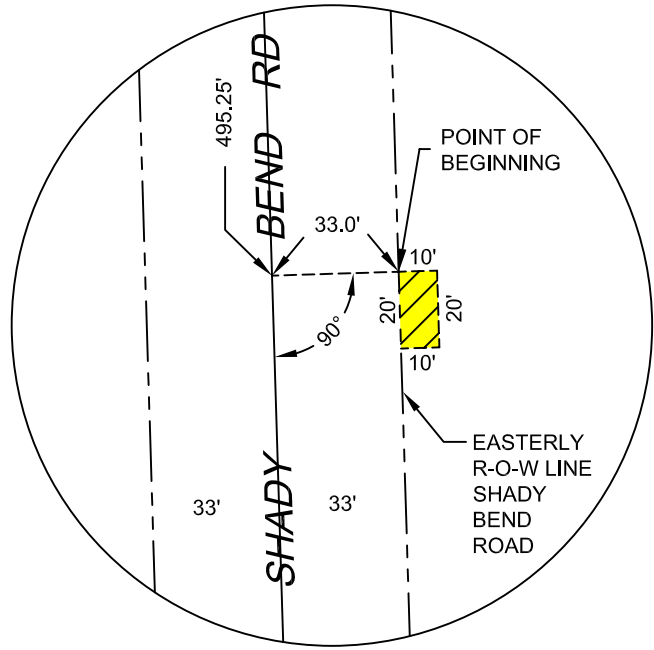
SEE DETAIL "A"

SHADY BEND ROAD

33.0

STOLLEY PARK RD

DETAIL "A"



PART OF  
NW 1/4, SW1/4  
SEC. 24, T-11-N, R-9-W



LEGEND



INDICATES 10' X 20'  
UTILITY EASEMENT

CITY OF  
**GRAND ISLAND**  
UTILITIES DEPARTMENT

**EXHIBIT "A"**

DRN BY: K.J.M.

SCALE: 1" = 50'

DATE: 9/11/2006

FILE: SEC 24.11.9