



# City of Grand Island

Tuesday, September 26, 2006

Council Session

## Item E1

**Public Hearing Concerning Acquisition of Utility Easement - 2620  
S. Shady Bend Road - John & Carolyn Schroll**

Staff Contact: Gary R. Mader

# **Council Agenda Memo**

**From:** Robert H. Smith, Asst. Utilities Director  
**Meeting:** September 26, 2006  
**Subject:** Acquisition of Utility Easement – 2620 South Shady Bend Road - Schroll  
**Item #'s:** E-1 & G-6  
**Presenter(s):** Gary R. Mader, Utilities Director

## **Background**

Nebraska State Law requires that acquisition of property must be approved by City Council. The Utilities Department needs to acquire an easement relative to the property of John J. and Carolyn M. Schroll, located at 2620 South Shady Bend Road, Hall County, in order to have access to install, upgrade, maintain, and repair power appurtenances, including lines and transformers.

## **Discussion**

This easement will be used to place underground cable and a single phase pad mounted transformer to provide electrical service to a new home at 2620 South Shady Bend Road.

## **Alternatives**

It appears that the Council has the following alternatives concerning the issue at hand. The Council may:

1. Make a motion to approve
2. Refer the issue to a Committee
3. Postpone the issue to future date
4. Take no action on the issue

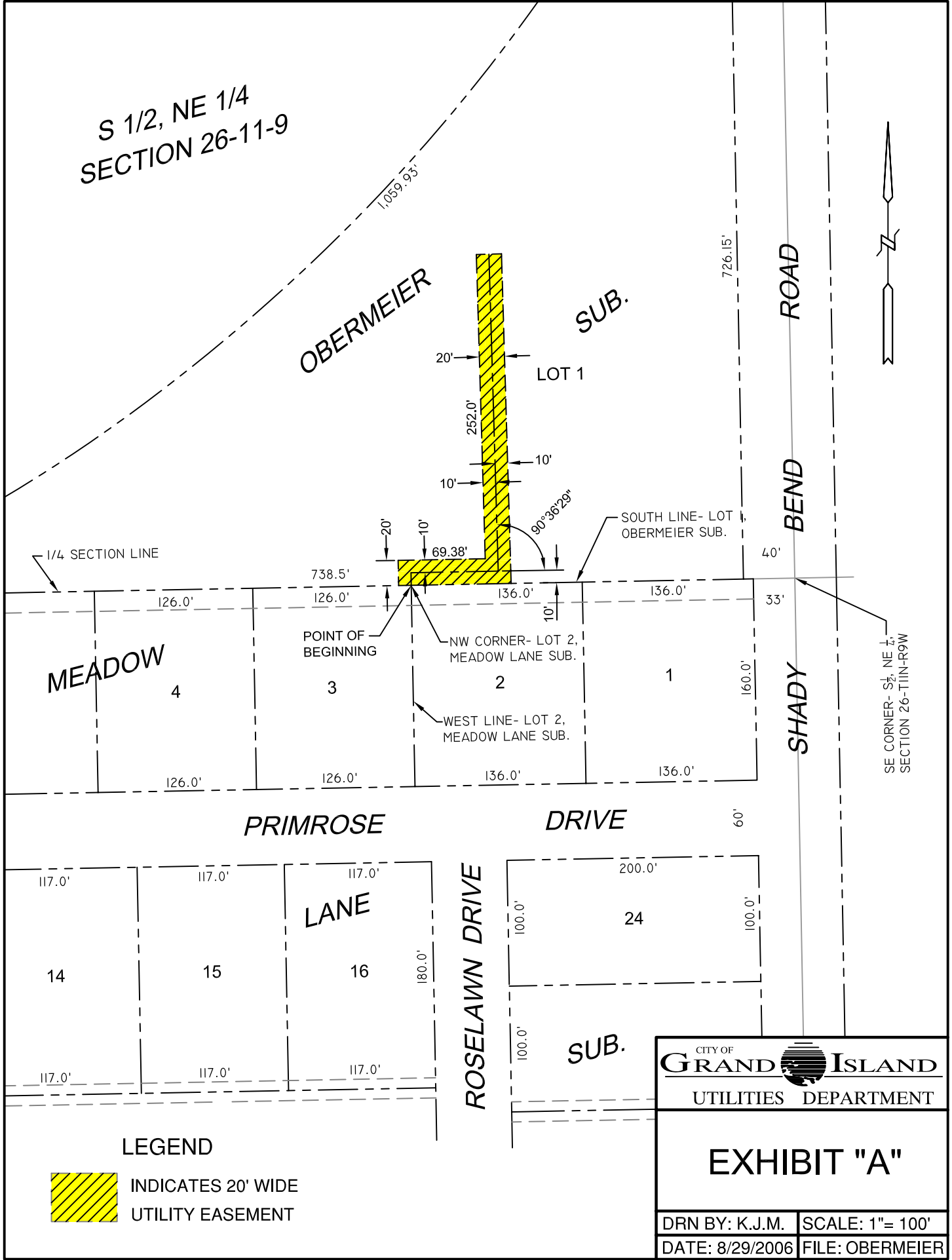
## **Recommendation**

City Administration recommends that the Council approve the resolution for the acquisition of the easement for one dollar (\$1.00).

## **Sample Motion**

Motion to approve acquisition of the Utility Easement.

S 1/2, NE 1/4  
SECTION 26-11-9



MEADOW

OBERMEIER  
SUB.

LOT 1

ROAD  
BEND  
SHADY

MEADOW

POINT OF BEGINNING  
NW CORNER - LOT 2, MEADOW LANE SUB.  
WEST LINE - LOT 2, MEADOW LANE SUB.

SOUTH LINE - LOT 1, OBERMEIER SUB.

SE CORNER - S 1/2, NE 1/4, SECTION 26-11N-R9W


PRIMROSE DRIVE

LANE

ROSELAWN DRIVE

SUB.

LEGEND

 INDICATES 20' WIDE UTILITY EASEMENT

CITY OF GRAND ISLAND  
UTILITIES DEPARTMENT

EXHIBIT "A"

DRN BY: K.J.M.	SCALE: 1"= 100'
DATE: 8/29/2006	FILE: OBERMEIER