



City of Grand Island

Tuesday, August 22, 2006

Council Session

Item G12

#2006-237 - Approving household Hazardous Waste Collection and Recycling Facility Construction Grant Application.

Staff Contact: Paul Bresino

Council Agenda Memo

From: Paul M. Briseno, Assistant to the City Administrator (jk)

Meeting: August 22, 2006

Subject: Household Hazardous Waste Facility construction grant from the Nebraska Environmental Trust

Item #'s: G-12

Presenter(s): Paul M. Briseno, Assistant to the City Administrator
Betty Curtis, Executive Director GIACCS
Joni Kuzma, Development Specialist

Background

In February 2004, the Grand Island City Council identified development of a permanent, regional Household Hazardous Waste (HHW) facility as a community goal. The planning team consists of city staff, city council representation, Clean Community System staff and board members, and Goodwill Industries of Greater Nebraska. Goodwill had received a previous grant for construction of an aluminum recycling center. DEQ encouraged a collaborative effort so the recycling center will be a part of the HHW facility.

In January 2005, the planning committee created a business plan and completed a grant application for architectural services to move the facility forward. The Department of Environmental Quality supported the project by awarding a \$75,000 grant for architectural/engineering services to design the facility. The Household Hazardous Waste planning team met with the architect multiple times during the past six months to finalize the building and site plan.

Discussion

The next step in the process is completion of an application to the Nebraska Environmental Trust for a construction grant. The proposed 9,700 square foot facility is a pre-engineered metal building which includes 5,520 square foot high bay processing area with a 200 square foot vented deflagration room (blast room) and a 3,480 square foot storage mezzanine, a 3,450 square foot Administration/Education area and a 600 square foot aluminum Recycling area. Construction costs have been estimated at \$900,000.

The proposed grant application requests \$652,000 from the Nebraska Environmental Trust. The balance of construction funds will be requested from the Department of Environmental Quality and other sources. A City match of \$80,000 will be allocated in the 2007-2008 budget. *There will be no cost to the City from the 2006-07 budget.* Notice of award does not take place until spring 2007 putting the beginning of construction late summer or early fall.

Alternatives

It appears that the Council has the following alternatives concerning the issue at hand. The Council may:

1. Move to approve the grant application and authorize the Mayor to sign all related documents
2. Refer the issue to a Committee
3. Postpone the issue to future date
4. Take no action on the issue

Recommendation

City administration recommends that Council approve a grant application for construction funds from the Nebraska Environmental Trust and authorize the Mayor to sign all related documents.

Sample Motion

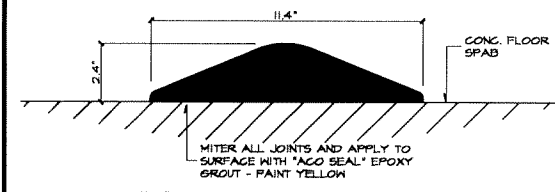
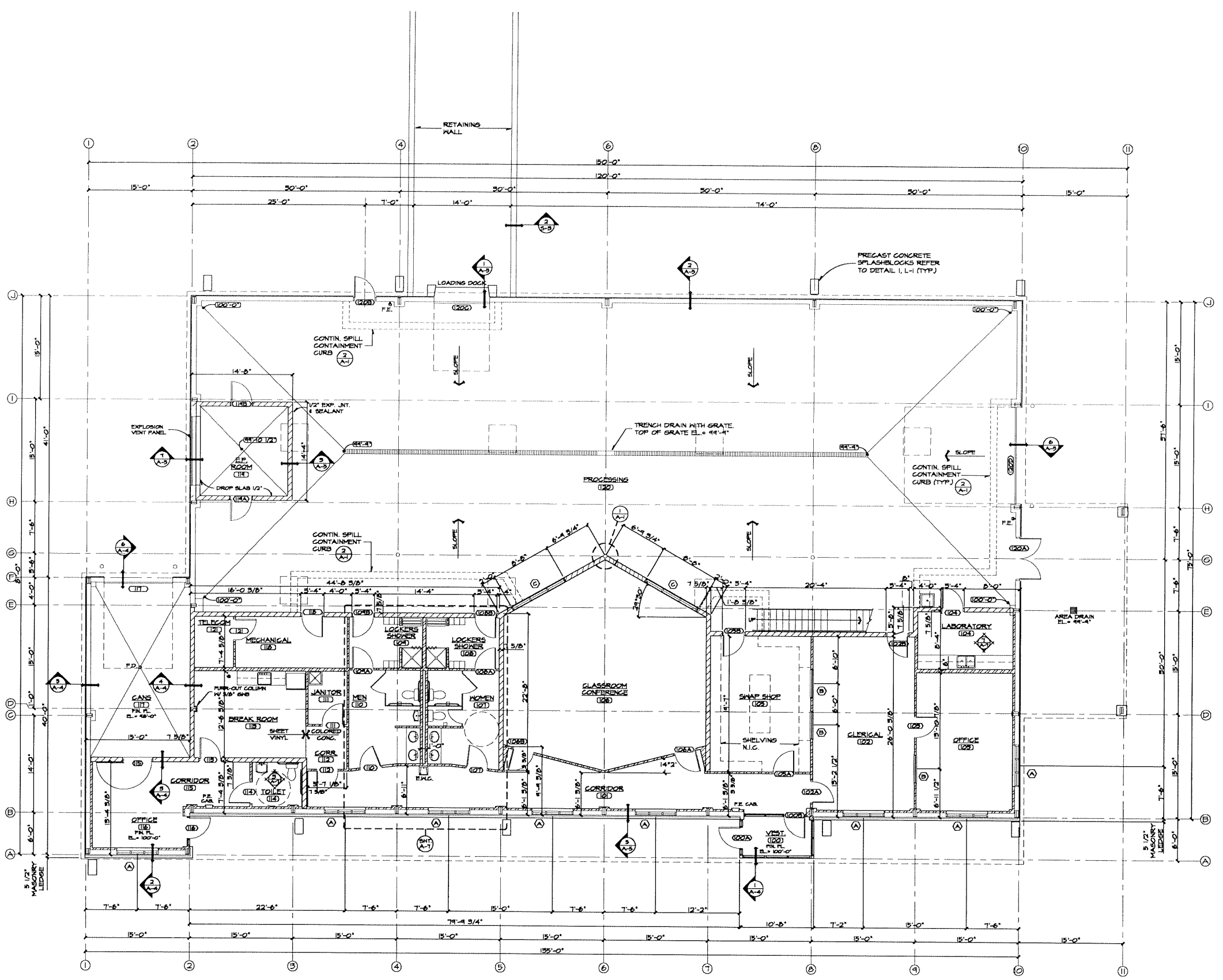
Motion to approve a grant application for construction funds from the Nebraska Environmental Trust and authorize the Mayor to sign all related documents.

GRAND ISLAND HOUSEHOLD HAZARDOUS WASTE
FLOOR PLAN
GRAND ISLAND, NEBRASKA



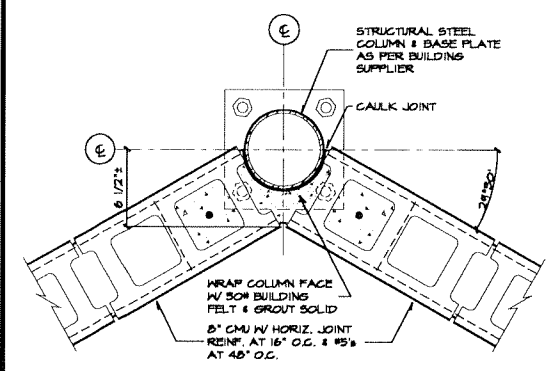
VERIFY SCALES
BAR IS ONE INCH ON ORIGINAL DRAWING
IF NOT ONE INCH ON THIS SHEET, ADJUST SCALES ACCORDINGLY.

SCALE: AS SHOWN
PROJECT NO. M149-G1-06
DATE: JULY, 2006
FIELD BOOK M&A DWG NO. 15840
DRAWN BY: JAW APR'VD BY: RJS
SHEET OF 25

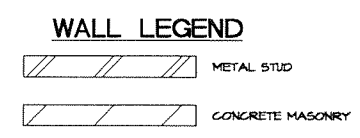


NOTE: SPILL CONTAINMENT CURBING BY "ACO" ENVIRONMENTAL - TYPE I, 2.4" HIGH X 11.4" WIDE X 34.31" IN LENGTH, INSTALL AS PER MANUFACTURER'S REQUIREMENTS.

2 PLAN DETAIL
SCALE: 3" = 1'-0"



1 PLAN DETAIL
SCALE: 1 1/2" = 1'-0"



JUL 14, 2006 08:36:32 C:\projects\m149-g1-06\dwg\1-11rwp1.dwg - 11rwp1.dwg

REVISIONS	BY

MILCO Environmental Services, Inc.
 Kearney, NE (308) 237-5923
 McCook, NE (308) 345-4741

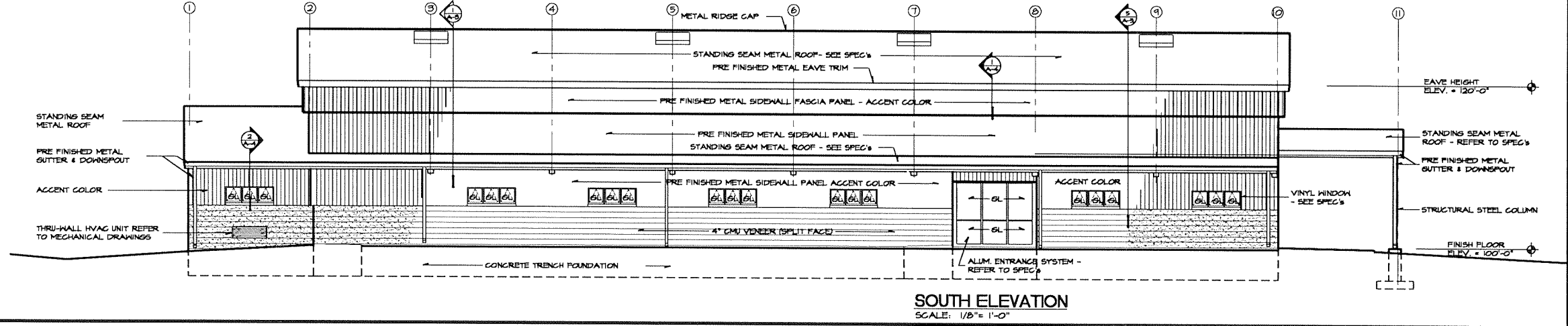
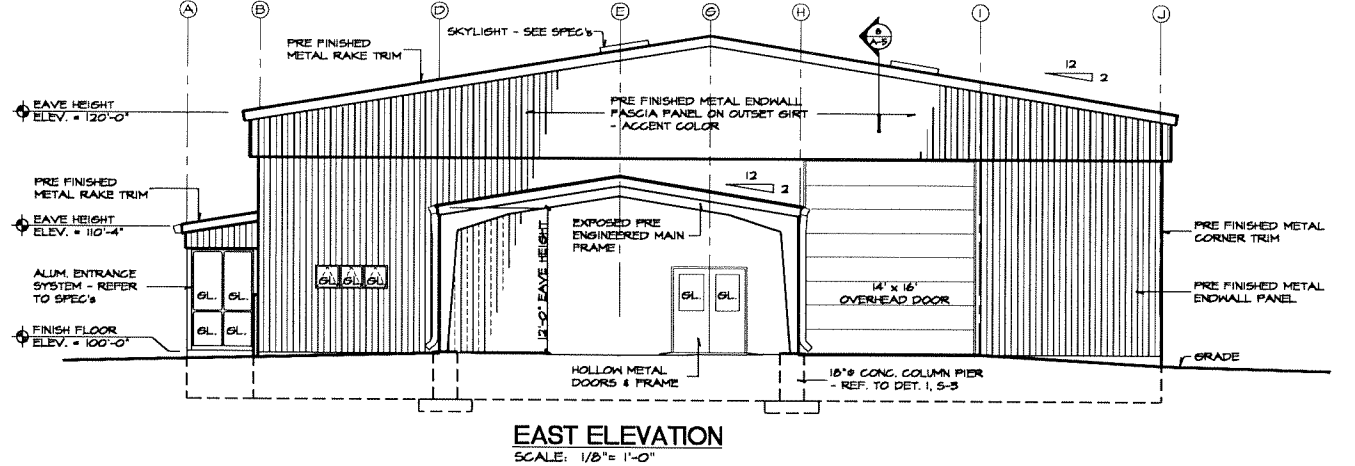
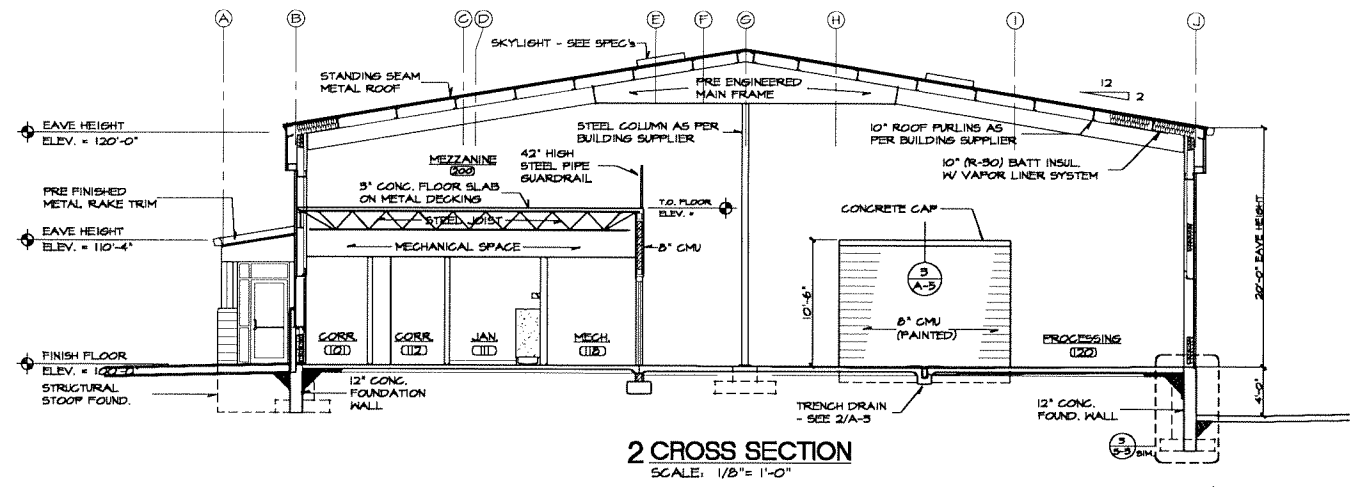
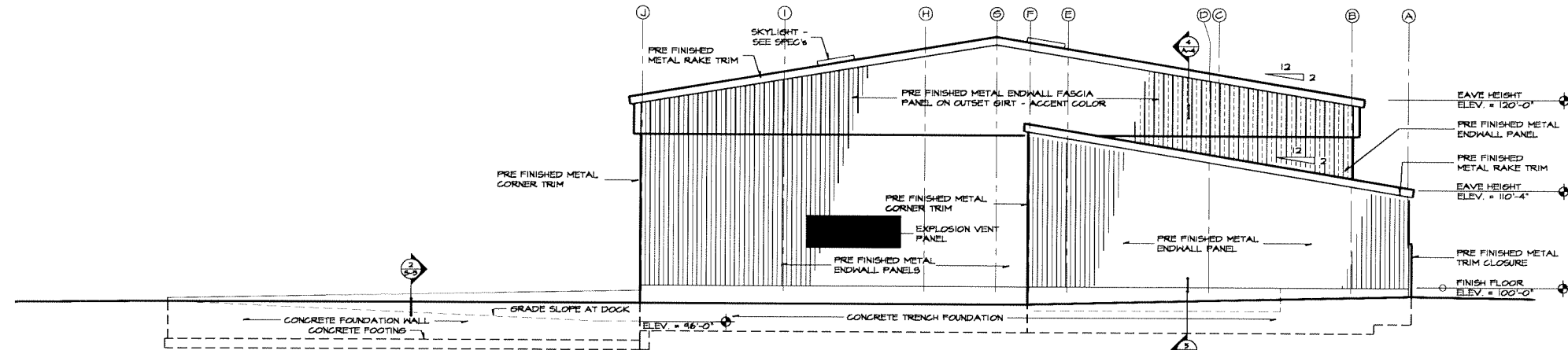
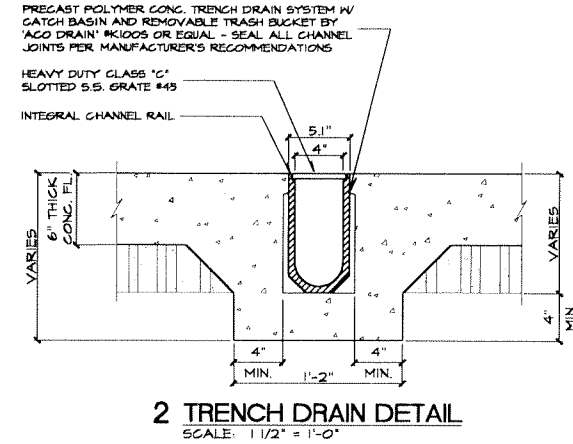
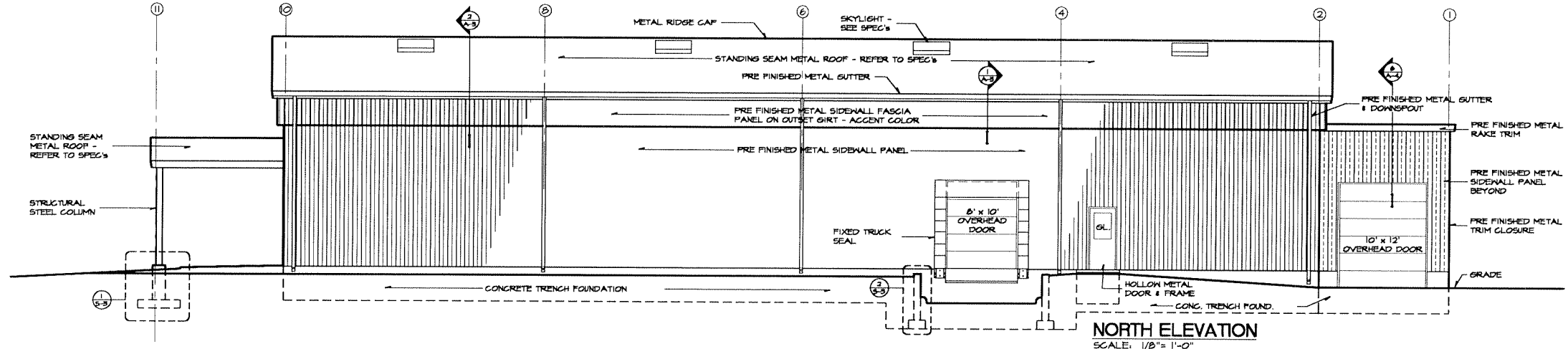
GRAND ISLAND HOUSEHOLD HAZARDOUS WASTE
BUILDING ELEVATIONS and CROSS SECTION
 GRAND ISLAND, NEBRASKA

This document, and the ideas and designs incorporated herein, are the property of Milco & Associates and is not to be used in whole or in part, for any other project without the written authorization of Milco & Associates.

REGISTERED ARCHITECT
 RICHARD J. STACY
 A-865
 STATE OF NEBRASKA

VERIFY SCALES
 BAR IS ONE INCH ON ORIGINAL DRAWING
 0" 1"
 IF NOT ONE INCH ON THIS SHEET, ADJUST SCALES ACCORDINGLY.

SCALE: AS SHOWN
 PROJECT NO. M149-G1-06
 DATE: JULY, 2006
 FIELD BOOK M&A DWG NO. 15838
 DRAWN BY: JAW APRVD BY: RJS
 SHEET **A-3** 25



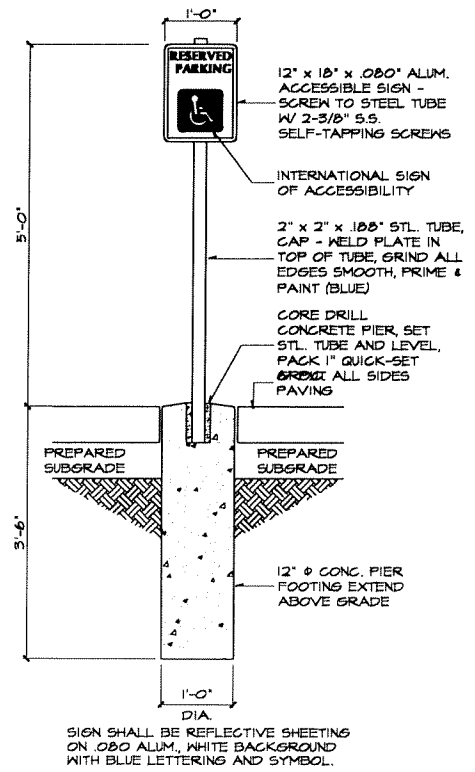
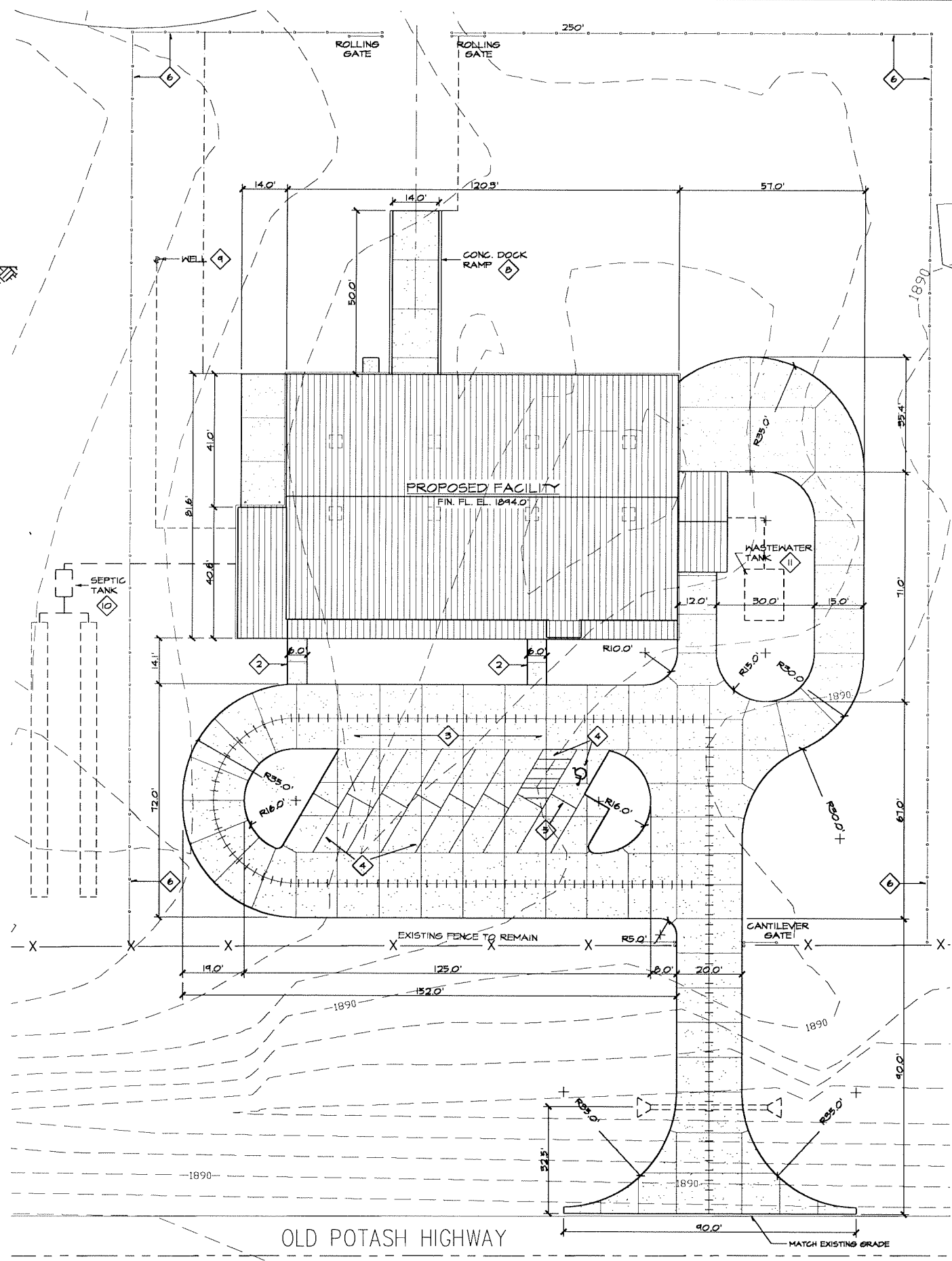
JUN 27, 2006 11:27:24 C:\p\proj\m149-g1-06\dwg\A-3.dwg

GRAND ISLAND HOUSEHOLD HAZARDOUS WASTE
SITE PLAN and DETAILS
GRAND ISLAND, NEBRASKA



VERIFY SCALES
BAR IS ONE INCH ON ORIGINAL DRAWING
IF NOT ONE INCH ON THIS SHEET, ADJUST SCALES ACCORDINGLY.

SCALE: AS SHOWN
PROJECT NO. M149-G1-06
DATE: JULY, 2006
FIELD BOOK M&A DWG NO. 15843
DRAWN BY: CAB APRVD BY: RJS
SHEET **C-2** 25



10 RESERVED PARKING SIGN
NO SCALE

GENERAL SITE NOTES:

- 1 DIMENSIONS SHOWN TO BUILDING ARE TO THE OUTSIDE FACE OF CONCRETE FOUNDATION.
- 2 NEW 4" THICK X WIDTH (AS SHOWN) CONCRETE SIDEWALK. REFER TO DETAIL 5, C-2.
- 3 NEW 6" THICK, 4,000 PSI CONCRETE DRIVE AND PARKING WITH CURB. PROVIDE CONTROL JOINTS WHERE SHOWN ON PLAN. SEALANT TO BE MEADOWS 164 OR APPROVED EQUAL.
- 4 PAINT 4" WIDE PAINT STRIPING FOR PARKING STALLS AND ACCESSIBLE STALL STRIPING AS SHOWN ON PARKING LOT LAYOUT.
- 5 FURNISH AND INSTALL ONE (1) ACCESSIBLE PARKING SIGN DESIGNATED AS RESERVED, SHOWING THE SYMBOL OF ACCESSIBILITY. REFER TO DETAIL 11, C-2.
- 6 NEW 6' HIGH CHAIN LINK FENCE AND GATES. REFER TO DETAILS THIS SHEET. CUT NEW OPENING IN EXISTING FENCE AND PROVIDE ALL REQUIRED POSTS AND HARDWARE.
- 7 NEW 6" THICK 4,000 PSI CONCRETE APRON. PROVIDE CONTROL JOINTS WHERE SHOWN ON PLAN. SEALANT TO BE MEADOWS 164 OR APPROVED EQUAL. REFER TO DETAILS 6 THRU 9, C-2.
- 8 6" THICK CONCRETE RAMP WITH RETAINING WALL EACH SIDE. REFER TO DETAILS 6 THRU 9 THIS SHEET FOR RAMP AND DETAIL 2, 5-3 FOR RETAINING WALLS.
- 9 LOCATION OF DOMESTIC WELL AND PIPING. REFER TO SHEET C-3 AND MECHANICAL DRAWINGS.
- 10 LOCATION OF SEPTIC TANK AND DRAIN FIELD. REFER TO SHEET C-3 AND MECHANICAL DRAWINGS.
- 11 LOCATION OF 2,000 GAL. CONCRETE HOLDING TANK AND PIPING. REFER TO MECHANICAL DRAWINGS.
- 12 INSTALL 18" Ø GALV. METAL CULVERT 36' LONG WITH FLARED END SECTION EACH END.

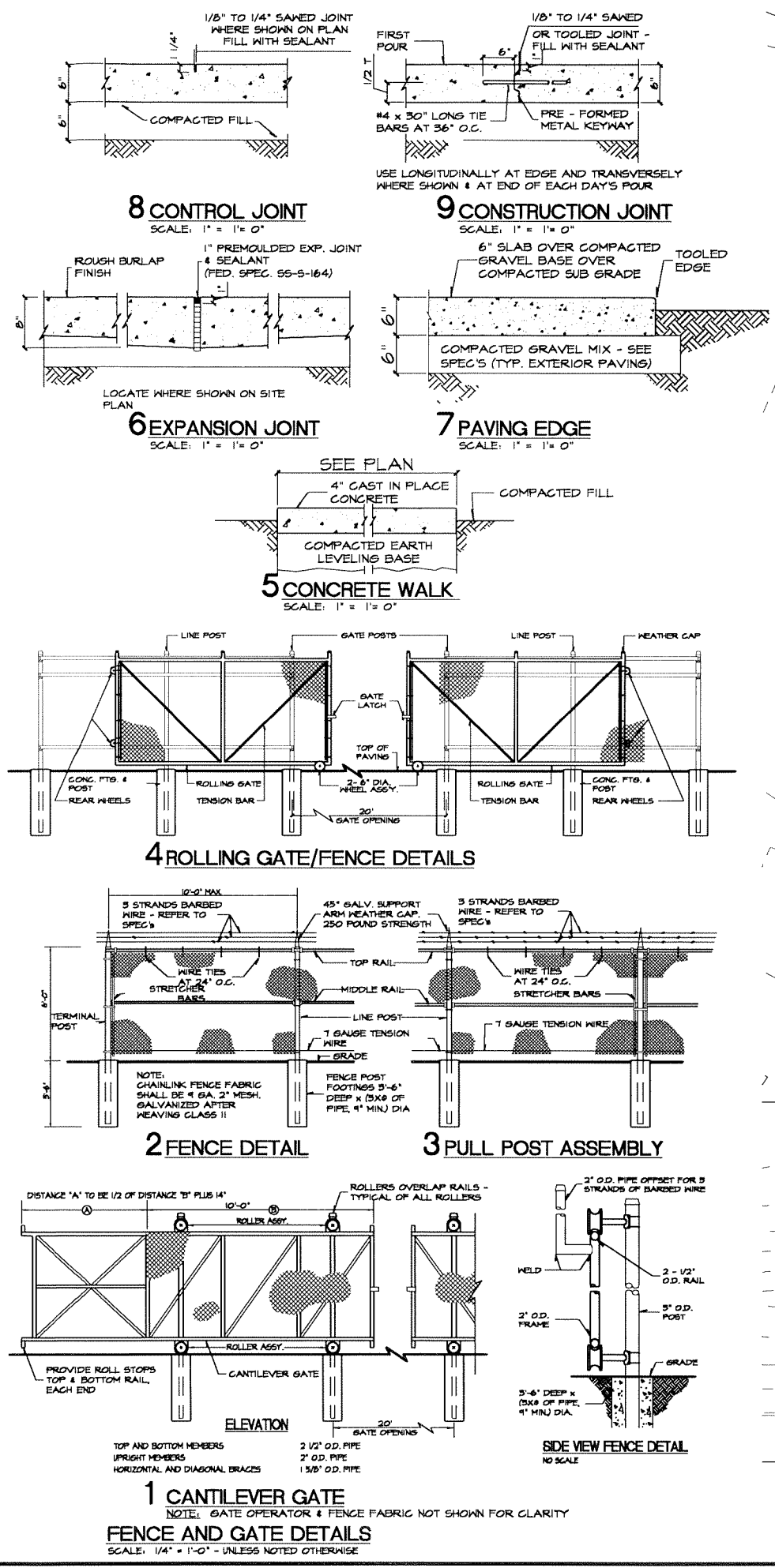
LEGEND

- CONCRETE PAVING
- GRAVEL DRIVEWAY AND PARKING

BENCH MARK T.B.M. EL. = 1843.58'

NORTHWEST CAP BOLT ON FIRE HYDRANT LOCATED ON THE EAST SIDE OF EXISTING CONCRETE SURFACE. REFER TO SHEET C-1 FOR ACTUAL LOCATION.

NOTE:
SEA LEVEL DATUM ELEVATION 1844.0' TO BE EQUAL TO ELEVATION 100'-0" ON ARCHITECTURAL DRAWINGS.



1 CANTILEVER GATE
NOTE: GATE OPERATOR & FENCE FABRIC NOT SHOWN FOR CLARITY
FENCE AND GATE DETAILS
SCALE: 1/4" = 1'-0" - UNLESS NOTED OTHERWISE

Location: C:\projects\m149-g1-06\m149-g1-06\m149-g1-06.dwg
Date: 07-14-2006 10:48:52 AM

REVISIONS	BY

MILCO
Environmental
Services, Inc.
 Kearney, NE (308) 237-5923
 McCook, NE (308) 345-4741

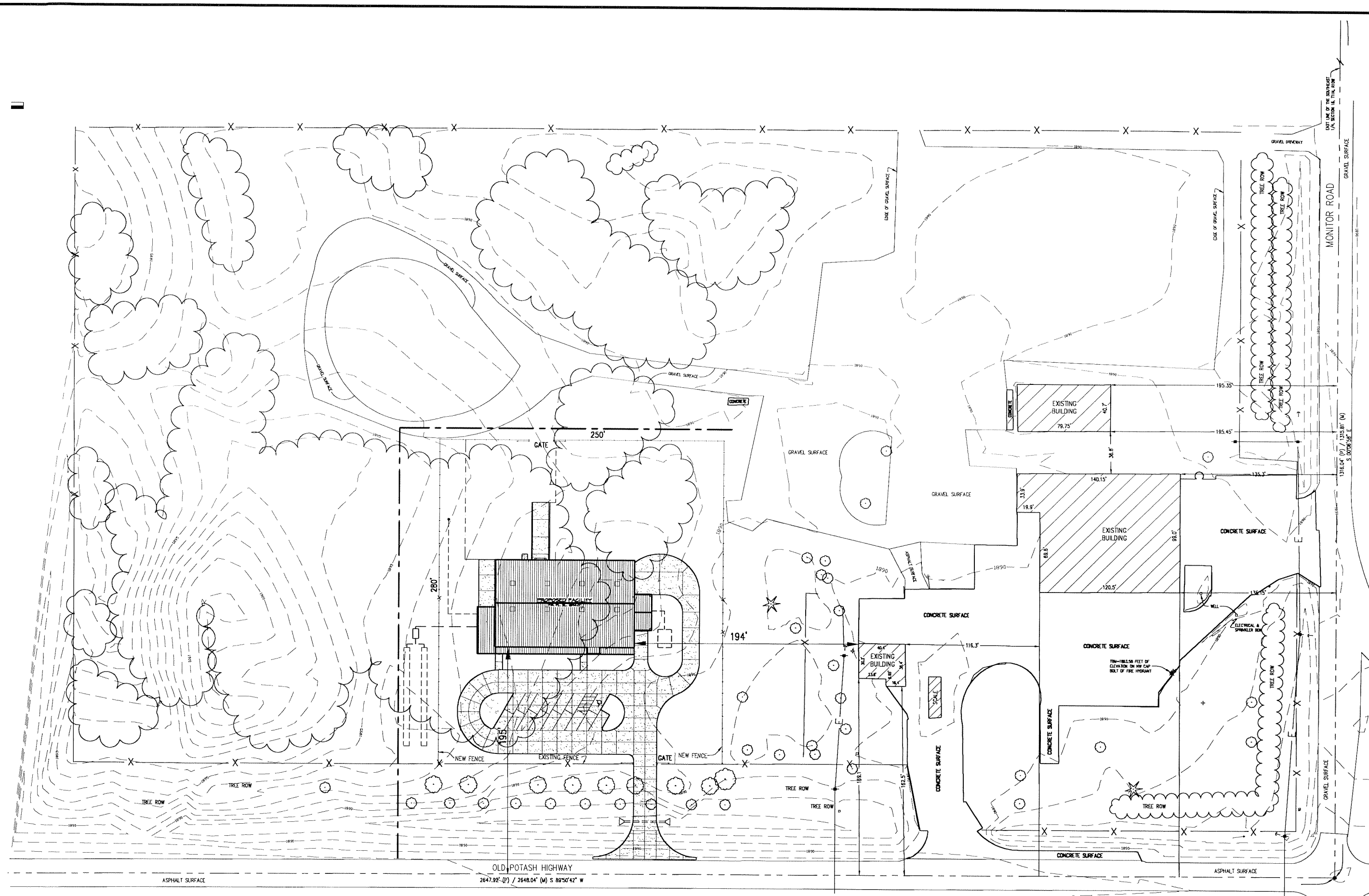
GRAND ISLAND HOUSEHOLD HAZARDOUS WASTE
MASTER SITE SURVEY
GRAND ISLAND, NEBRASKA

The document, and the data and design incorporated herein, as an instrument of professional service, is the property of Milco & Associates and is not to be used in whole or in part, for any other project without the written authorization of Milco & Associates.

VERIFY SCALES

BAR IS ONE INCH ON ORIGINAL DRAWING
 IF NOT ONE INCH ON THIS SHEET, ADJUST SCALES ACCORDINGLY.

SCALE:	AS SHOWN
PROJECT NO.	M149-G1-06
DATE:	JULY, 2006
FIELD BOOK	M&A DWG NO. 15B44
DRAWN BY:	CAB
APRVD BY:	
SHEET	C-1



NORTH
SITE PLAN
 SCALE: 1" = 40'

RESOLUTION 2006-237

WHEREAS, in February 2004, the Grand Island City Council identified development of a permanent, regional Household Hazardous Waste facility as a community goal; and

WHEREAS, in January 2005, a business plan was prepared for the facility; and

WHEREAS, in February 2006, as a result of a \$75,000 grant received from the Department of Environmental Quality, the City hired MILCO Environmental Services, Inc. to perform architectural/engineering services to design the facility; and

WHEREAS, the building plan and site plan have been prepared by MILCO Environmental Services, Inc., with an estimated construction cost of \$900,000; and

WHEREAS, a grant application has been prepared to request funding in the amount of \$652,000 from the Nebraska Environmental Trust for the construction costs of the facility; and

WHEREAS, it is anticipated that the remaining funds for the construction would be requested from the Department of Environmental Quality and other sources; and

WHEREAS, if awarded the grant, a city match of \$80,000 may be allocated in the 2007-2008 budget.

NOW, THEREFORE, BE IT RESOLVED BY THE MAYOR AND COUNCIL OF THE CITY OF GRAND ISLAND, NEBRASKA, that the City of Grand Island is hereby authorized to submit a grant application in the amount of \$652,000 to the Nebraska Environmental Trust for the construction of a Household Hazardous Waste facility.

BE IT FURTHER RESOLVED, that the Mayor is hereby authorized and directed to execute all documents necessary for the submission of the grant application.

- - -

Adopted by the City Council of the City of Grand Island, Nebraska, August 22, 2006.

Jay Vavricek, Mayor

Attest:

Approved as to Form	☐ _____
August 17, 2006	☐ City Attorney

RaNae Edwards, City Clerk