



City of Grand Island

Tuesday, August 22, 2006

Council Session

Item E3

**Public Hearing Concerning Acquisition of Utility Easement - 1135
S. Locust - Shafer Properties, LLC**

Staff Contact: Gary R. Mader

Council Agenda Memo

From: Robert H. Smith, Asst. Utilities Director
Meeting: August 22, 2006
Subject: Acquisition of Utility Easement – 1135 S. Locust Street –
Shafer Properties, LLC
Item #'s: E-3, G-6
Presenter(s): Gary R. Mader, Utilities Director

Background

Nebraska State Law requires that acquisition of property must be approved by City Council. The Utilities Department needs to acquire an easement relative to the property of Shafer Properties, LLC, located on the east side of the building located at 1135 South Locust Street, in the City Of Grand Island, Hall County, in order to have access to install, upgrade, maintain, and repair power appurtenances, including lines and transformers.

Discussion

This easement will be used to locate a pad-mounted transformer to provide electrical service to the building on the lot. The original lot was split and the second building was originally fed electrically from the main building. Since the property was split, the building on Lot One (1) needs its own service.

Alternatives

It appears that the Council has the following alternatives concerning the issue at hand. The Council may:

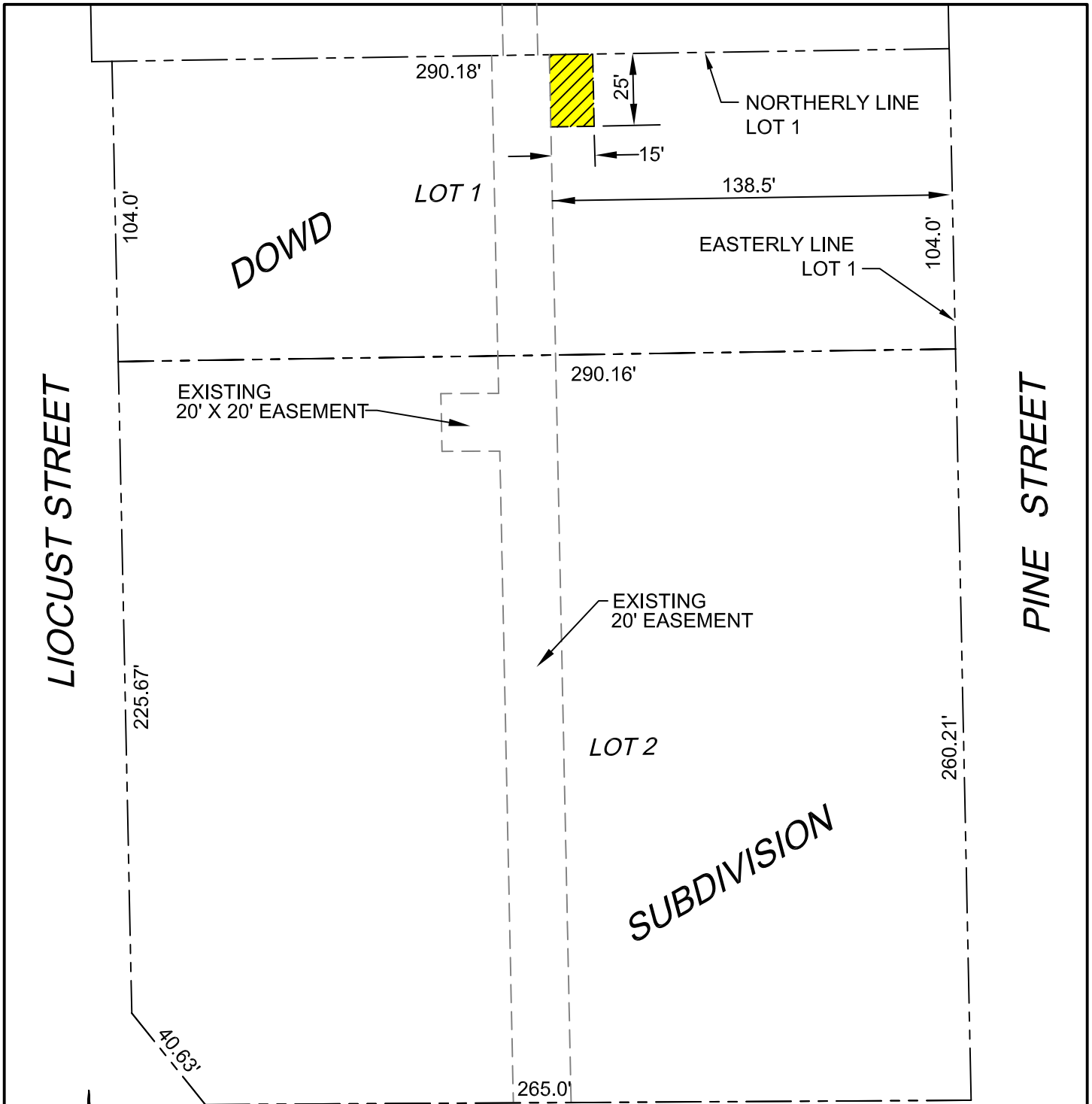
1. Make a motion to approve
2. Refer the issue to a Committee
3. Postpone the issue to future date
4. Take no action on the issue

Recommendation

City Administration recommends that the Council approve the resolution for the acquisition of the easement for one dollar (\$1.00).

Sample Motion

Motion to approve acquisition of the Utility Easement.



LIOCUST STREET

PINE STREET

FONNER PARK ROAD

DOWD

SUBDIVISION

LOT 1

LOT 2


NORTHERLY LINE
LOT 1

EASTERLY LINE
LOT 1

EXISTING
20' X 20' EASEMENT

EXISTING
20' EASEMENT



LEGEND
 INDICATES 15' X 25'
 UTILITY EASEMENT

CITY OF
GRAND ISLAND
 UTILITIES DEPARTMENT

EXHIBIT "A"

DRN BY: K.J.M.	SCALE: 1" = 50'
DATE: 8/8/2006	FILE: DOWD SUB