



City of Grand Island

Tuesday, June 27, 2006

Council Session

Item E7

Public Hearing Concerning Acquisition of Utility Easement - West Side of Capital Trailer Park between 508 and 518 E. Capital Avenue - Escandon

Staff Contact: Gary R. Mader

Council Agenda Memo

From: Robert H. Smith, Asst. Utilities Director

Meeting: June 27, 2006

Subject: Acquisition of Utility Easement – West side of Capital Trailer Park between 508 and 518 E. Capital Avenue – Ruben and Martha Escandon

Item #'s: E-7 & G-9

Presenter(s): Gary R. Mader, Utilities Director

Background

Nebraska State Law requires that acquisition of property must be approved by City Council. The Utilities Department needs to acquire an easement relative to the property of Ruben and Martha Escandon, located along the west side of the Capital Trailer Park between 508 and 518 East Capital Avenue, in the City Of Grand Island, Hall County, in order to have access to install, upgrade, maintain, and repair power appurtenances, including lines and transformers.

Discussion

This easement will be used to reconstruct a three phase overhead power line along the west side of Capital Trailer Court.

The existing line is over 50 years old, the poles are short and there is a need to add a three phase underground takeoff 1,362 feet north of Capital Avenue. By obtaining the easement, a new line can be constructed, energized, and placed into service without long outages to the Trailer Park customers. The new overhead line will serve the Trailer Park, a future Assembly Hall, soccer field lights, and a revival area for the Iglesia De Dios Eben-Ezer Church.

Alternatives

It appears that the Council has the following alternatives concerning the issue at hand. The Council may:

1. Make a motion to approve
2. Refer the issue to a Committee
3. Postpone the issue to future date
4. Take no action on the issue

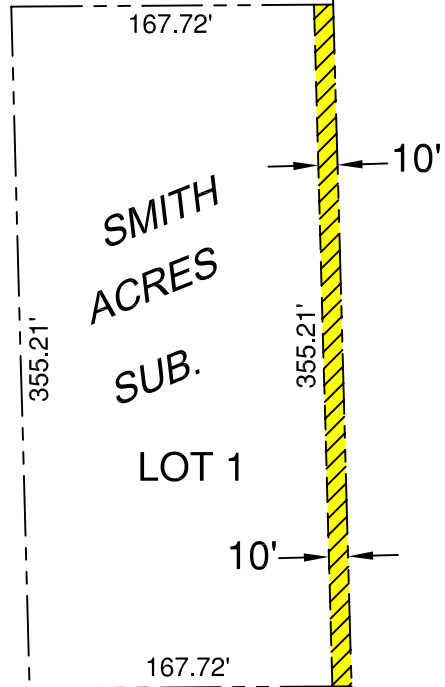
Recommendation

City Administration recommends that the Council approve the resolution for the acquisition of the easement for one dollar (\$1.00).

Sample Motion

Motion to approve acquisition of the Utility Easement.

PART OF THE
W1/2, E1/2, W1/2, SE1/4
SECTION 4-T11N-R9W



SECTION LINE

CAPITAL

167.88'

40'

AVENUE

33'
33'

B.N. & S.F. RAILWAY

LEGEND



INDICATES 10' WIDE
UTILITY EASEMENT

CITY OF
GRAND ISLAND
UTILITIES DEPARTMENT

EXHIBIT "A"

DRN BY: K.J.M.

SCALE: 1"= 100'

DATE: 6/8/2006

FILE: SMITCH ACR