



City of Grand Island

Tuesday, December 19, 2006

Council Session

Item D1

#2006-BE-14 - Consideration of Determining Benefits for Street Improvement District 1258; Extending Faidley Avenue West of Diers Avenue an Additional Six Hundred Fifty Feet (650 Feet)

Staff Contact: Steven P. Riehle, Public Works Department

Council Agenda Memo

From: Steven P. Riehle, Public Works Director

Meeting: December 19, 2006

Subject: Board of Equalization Hearing to Determine Benefits and Consideration of an Ordinance Levying Assessments for Street Improvement District 1258; Extending Faidley Avenue West of Diers Avenue an Additional Six Hundred Fifty Feet (650 Feet)

Item #'s: D-1 & F-1

Presenter(s): Steven P. Riehle, Public Works Director

Background

The Certificate of Final Completion for Street Improvement District 1258 was approved on November 28, 2006 with December 19, 2006 set as the date for Council to sit as the Board of Equalization. All work has been completed and special assessments have been calculated for the District.

Discussion

The contract for Street Improvement District 1258 was awarded to The Diamond Engineering Co., of Grand Island, NE on April 11, 2006. Work on the project was completed at a construction price of \$179,224.90. Total cost of the project including contract administration is \$197,147.92. Costs for the project break down as follows:

Original Bid	\$ 157,886.40
Overruns	\$ 19,853.50
Change Order No. 1	\$ 1,485.00
Sub Total (Construction Price)	\$ 179,224.90
Additional Costs:	
Contract Administration, <u>Engineering, and Publication Costs</u>	<u>\$ 17,922.49</u>
Total Cost	\$ 197,147.39

The estimated cost at the time of creation was \$147,865.00.

The bulk of the overruns were for the construction of the intersection for Irongate Avenue to serve LaRue Subdivision at the request of the developer and two (2) additional concrete letdown structures that were not shown on the plans and had to be removed. The Irongate intersection is a city cost in accordance with past practices for assessing Street Improvement Districts.

Alternatives

It appears that the Council has the following alternatives concerning the issue at hand. The Council may:

1. Move to approve a resolution to determine benefits and pass an ordinance levying the assessments.
2. Refer the issue to a Committee.
3. Postpone the issue to future date.
4. Take no action on the issue.

Recommendation

City Administration recommends that the Council sit as the Board of Equalization to determine benefits and pass an ordinance to levy Special Assessments to individual properties.

Sample Motion

(Sample Motion for the Board of Equalization)

Move to approve the resolution determining benefits for Street Improvement District 1258.

(Sample Motion for the Ordinance)

Move to approve the ordinance levying the assessments for Street Improvement District 1258.

E. 1/2 N.W. 1/4
SECTION 13-11-10

CRANE VALLEY

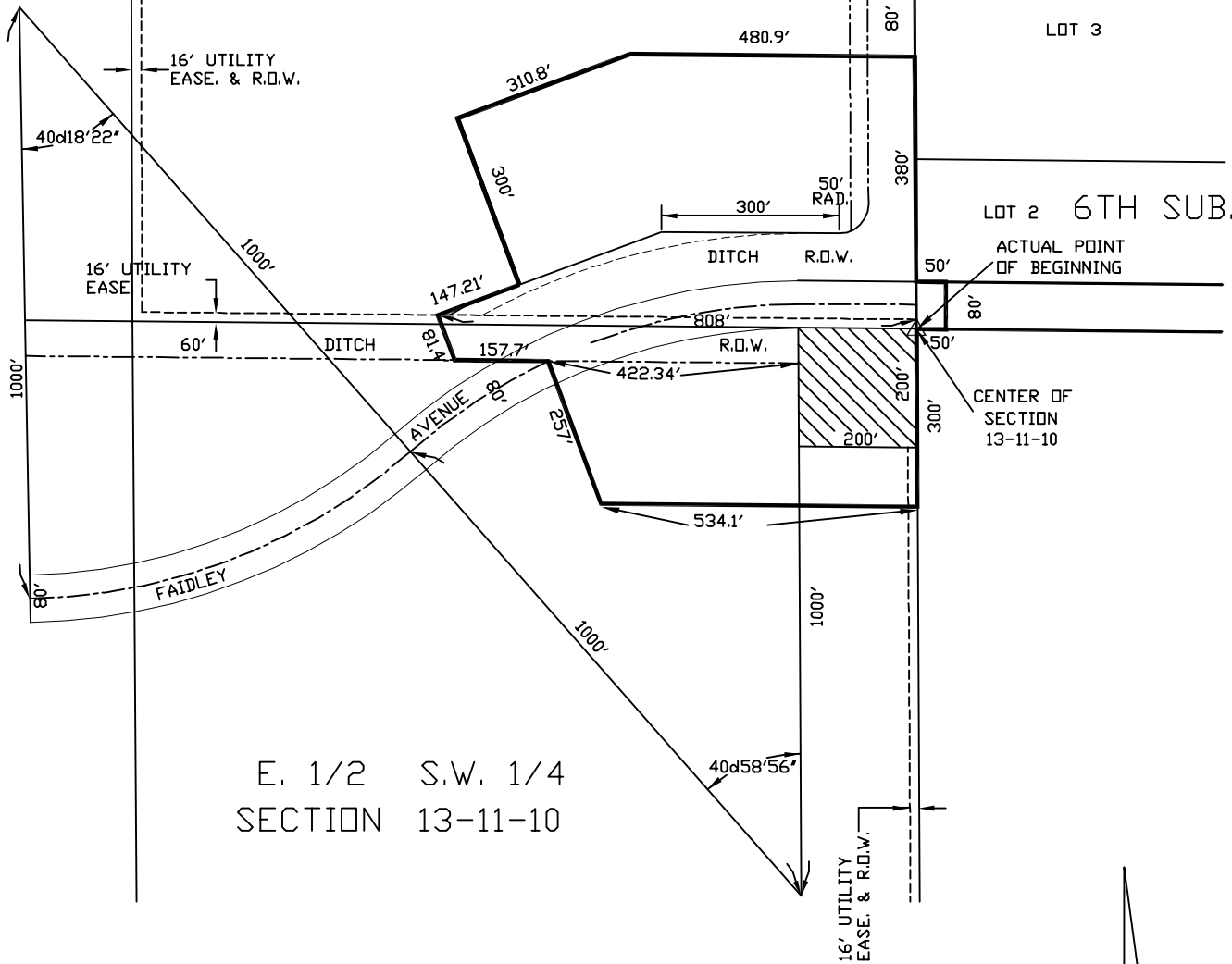
LOT 3

LOT 2 6TH SUB.

ACTUAL POINT
OF BEGINNING

CENTER OF
SECTION
13-11-10

E. 1/2 S.W. 1/4
SECTION 13-11-10



STREET IMPROVEMENT
DISTRICT NO. 1258

EXHIBIT "A"

CITY OF
GRAND ISLAND
PUBLIC WORKS DEPARTMENT

DATE: 10/27/05
DRAWN BY: L.D.C.
SCALE: 1"=300'

PLAT TO ACCOMPANY
ORDINANCE NO. 9016

RESOLUTION 2006-BE-14

BE IT RESOLVED BY THE MAYOR AND COUNCIL OF THE CITY OF GRAND ISLAND, NEBRASKA, sitting as a Board of Equalization for Street Improvement District No. 1258, after due notice having been given thereof, that we find and adjudge:

That the benefits accruing to the real estate in such district to be the total sum of \$132,300.28; and

Such benefits are equal and uniform; and

According to the equivalent frontage of the respective lots, tracts, and real estate within such Street Improvement District No. 1258, such benefits are the sums set opposite the several descriptions as follows:

Name	Description	Assessment
T&E Cattle Company	Part of NE ¼ SW ¼ of Section 13-11-10	\$31,681.98
City of Grand Island Utilities Department	Part of NE ¼ SW ¼ Section 13-11-10 (200'x200') Beginning at the NE corner of said SW ¼, thence S. 200'; thence West 200'; thence N 200'; thence #200' to the point of beginning.	\$20,568.20
City of Grand Island Moores Creek Drain	Part of the SE ¼ NW ¼ Section 13-11-10; Beginning on the East line of said NW ¼ and 160' North of the SE corner of said SW ¼; thence north 300'; thence west 80'; thence south 300'; thence east 80' to the point of beginning.	\$10,516.32
Housing Plus LLC	Lot 40, Larue Subdivision	\$146.30
Housing Plus LLC	Lot 41, Larue Subdivision	\$760.67
Housing Plus LLC	Lot 42, Larue Subdivision	\$1,429.39
Housing Plus, LLC	Lot 43, Larue Subdivision	\$2,724.83
Housing Plus LLC	Lot 44, Larue Subdivision	\$5,228.17
Housing Plus LLC	Lot 45, Larue Subdivision	\$8,181.17
Housing Plus LLC	Lot 46, Larue Subdivision	\$4,552.46
Housing Plus LLC	Lot 47, Larue Subdivision	\$2,272.28
Housing Plus LLC	Lot 48, Larue Subdivision	\$1,168.35
Housing Plus LLC	Lot 49, Larue Subdivision	\$608.32
Housing Plus LLC	Lot 50, Larue Subdivision	\$59.04
Housing Plus LLC	Lot 77, Larue Subdivision	\$104.50
Housing Plus LLC	Lot 78, Larue Subdivision	\$389.98
Housing Plus LLC	Lot 79, Larue Subdivision	\$742.56
Housing Plus LLC	Lot 80, Larue Subdivision	\$1,315.08
Housing Plus LLC	Lot 81, Larue Subdivision	\$3,381.62
Housing Plus LLC	Outlot B, Larue Subdivision	\$11,291.15
Housing Plus LLC	Lot 82, Larue Subdivision	\$2,941.53
Housing Plus LLC	Lot 83, Larue Subdivision	\$1,256.99
Housing Plus LLC	Lot 84, Larue Subdivision	\$743.62
Housing Plus LLC	Lot 85, Larue Subdivision	\$224.02
Housing Plus LLC	Lot 110, Larue Subdivision	\$26.98
Housing Plus LLC	Lot 111, Larue Subdivision	\$735.06
Housing Plus LLC	Lot 112, Larue Subdivision	\$1,002.90
Housing Plus LLC	Outlot A, Larue Subdivision	\$18,246.81
Total Assessment		\$132,300.28

Approved as to Form <input type="checkbox"/> _____ December 14, 2006 <input type="checkbox"/> City Attorney
--

RESOLUTION 2006-BE-14

Adopted by the City Council of the City of Grand Island, Nebraska, on December 19, 2006.

Margaret Hornady, Mayor

Attest:

RaNae Edwards, City Clerk