



City of Grand Island

Tuesday, April 11, 2006

Council Session

Item G12

**#2006-108 - Approving Final Plat and Subdivision Agreement for
Neumann Second Subdivision**

Staff Contact: Chad Nabity

-Council Agenda Memo

From: Regional Planning Commission
Meeting: April 11, 2006
Subject: Neumann Second Subdivision - Final Plat
Item #'s: G-12
Presenter(s): Chad Nabity AICP, Regional Planning Director

Background

This subdivision proposes to create 2 lots on a parcel of land comprising of lot 1 Neumann Second Subdivision. This land consists of approximately 108.256 acres.

Discussion

This property is zoned R1 Low Density Residential. This is the site of the new middle school and additional property that will remain under the school's ownership. This subdivision creates a site for the new middle school and plats Redwood Road through the property as well as establishing easements around the proposed school building.

Alternatives

It appears that the Council has the following alternatives concerning the issue at hand. The Council may:

1. Approve the final plat as presented
2. Modify the final plat to meet the wishes of the Council
3. Table the issue

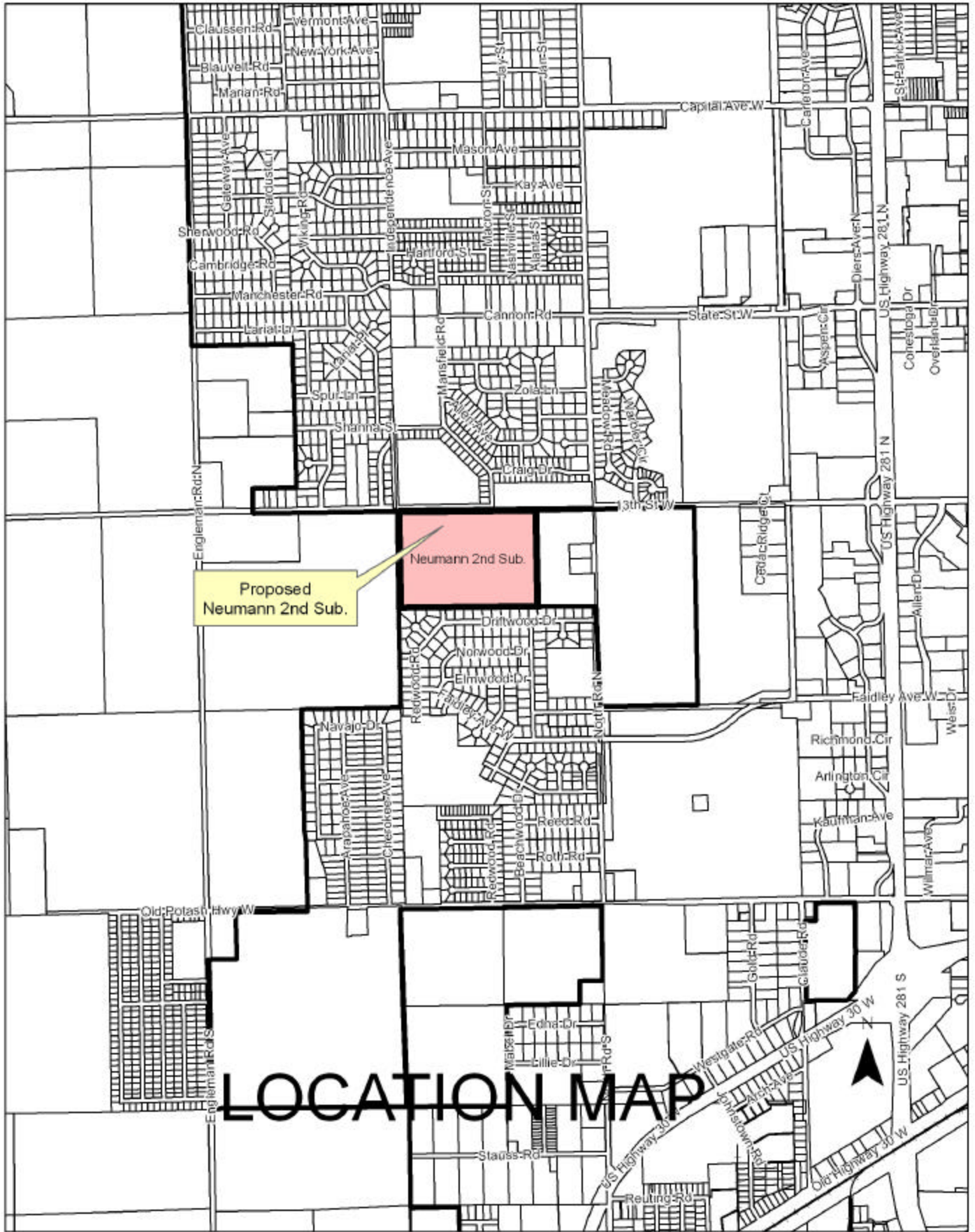
Recommendation

A motion was made by Miller 2nd by Haskins to approve the final plat as presented.

A roll call vote was taken on the motion to recommend approval with 9 members (Haskins, Reynolds, O'Neill, Niemann, Miller, Eriksen, Ruge, Monter, Snodgrass) voting in favor.

Sample Motion

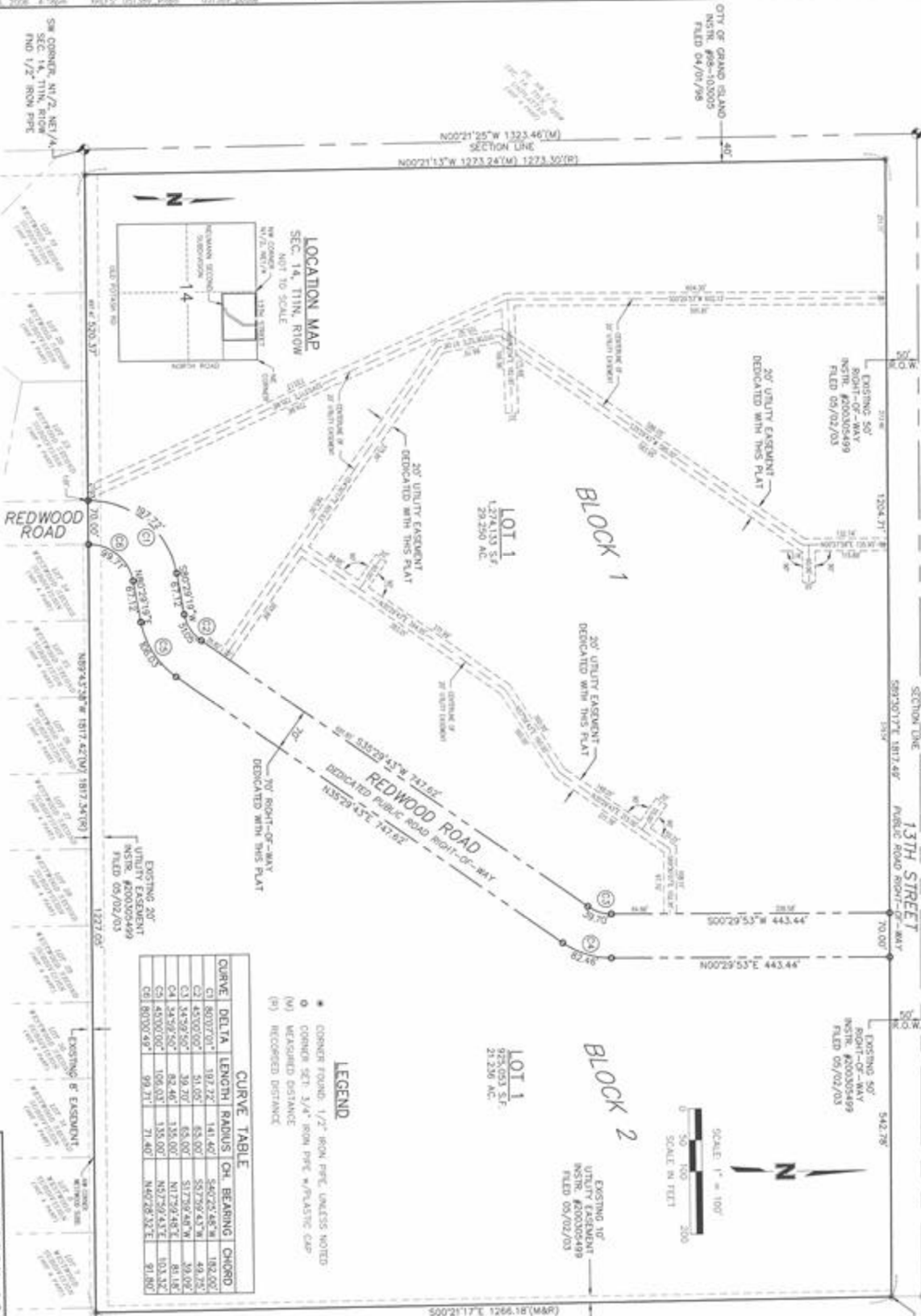
Approve the Final Plat for Neumann Second Subdivision as presented.



NW CORNER, N 1/2, NE 1/4
 SEC. 14, T11N, R10W
 FND 1/2" IRON PIPE

CITY OF GRAND ISLAND
 NSRN #88-102005
 FILED 04/07/06

NEUMANN SECOND SUBDIVISION IN THE CITY OF GRAND ISLAND



- LEGEND**
- CORNER FOUND 1/2" IRON PIPE, UNLESS NOTED
 - CORNER SET 3/4" IRON PIPE w/ PLASTIC CAP
 - (M) MEASURED DISTANCE
 - (P) RECORDED DISTANCE

CURVE TABLE

CURVE	DELTA	LENGTH	RADIUS	CH	BEARING	CHORD
C1	80.07701°	19.732'	141.467'	546.7254678'	192.002°	192.002'
C2	45.03000°	51.000'	65.000'	537.9294378'	49.732°	49.732'
C3	54.97502°	39.200'	65.000'	517.7924878'	59.102°	59.102'
C4	54.97502°	82.460'	135.000'	527.9243178'	61.138°	61.138'
C5	45.03000°	106.030'	135.000'	527.9243178'	103.332°	103.332'
C6	80.07701°	99.710'	141.467'	546.7254678'	91.880°	91.880'



OLSSON ASSOCIATES

REGISTERED PROFESSIONAL ENGINEERS - PLANNERS - SURVEYORS
 1000 N. 10TH STREET, SUITE 200, GRAND ISLAND, NE 68801
 PHONE: (402) 734-2200 FAX: (402) 734-2201
 WWW.OLSSONASSOCIATES.COM

R E S O L U T I O N 2006-108

WHEREAS, the Hall County School District 2, a body corporate, as owner, has caused to be laid out into a lot, a tract of land comprising all of Lot 1, Neumann Subdivision, an addition to the City of Grand Island, Hall County, Nebraska, under the name of NEUMANN SECOND SUBDIVISION, and has caused a plat thereof to be acknowledged by it; and

WHEREAS, a copy of the plat of such subdivision has been presented to the Boards of Education of the various school districts in Grand Island, Hall County, Nebraska, as required by Section 19-923, R.R.S. 1943; and

WHEREAS, a form of subdivision agreement has been agreed to between the owner of the property and the City of Grand Island.

NOW, THEREFORE, BE IT RESOLVED BY THE MAYOR AND COUNCIL OF THE CITY OF GRAND ISLAND, NEBRASKA, that the form of subdivision agreement hereinbefore described is hereby approved, and the Mayor is hereby authorized to execute such agreement on behalf of the City of Grand Island.

BE IT FURTHER RESOLVED that the final plat of NEUMANN SECOND SUBDIVISION, as made out, acknowledged, and certified, is hereby approved by the City Council of the City of Grand Island, Nebraska, and the Mayor is hereby authorized to execute the approval and acceptance of such plat by the City of Grand Island, Nebraska.

- - -

Adopted by the City Council of the City of Grand Island, Nebraska, April 11, 2006.

Jay Vavricek, Mayor

Attest:

RaNae Edwards, City Clerk

Approved as to Form	☐ _____
April 6, 2006	☐ City Attorney