



City of Grand Island

Tuesday, March 28, 2006

Council Session

Item F1

#9032 - Consideration of Annexation of Property Proposed for Platting as Ewoldt Addition Located South of Husker Highway and West of U.S. Highway 281 (Final Reading)

Staff Contact: Chad Nabity

Council Agenda Memo

From: Regional Planning Commission
Meeting: March 28, 2006
Subject: Annexation – Ewoldt Subdivision (Third Reading)
Item #'s: F-1
Presenter(s): Chad Nabity AICP, Regional Planning Director

Background

Annexation of land proposed for platting as Ewoldt Subdivision an addition to the City of Grand Island, located in the NE ¼ 36-11-10 into the Grand Island City Limits.

Discussion

This property is contiguous with the Grand Island City Limits. The owners have requested this annexation by proposing to plat this property as an addition to the City.

This property is substantially within the Grand Island Utilities Electrical Service District. Sewer and water are available to this property. This property is within the Cedar Hollow/Northwest School Districts. This annexation will not impact the two-mile extraterritorial jurisdiction of Grand Island.

Alternatives

It appears that the Council has the following alternatives concerning the issue at hand. The Council may:

1. Approve the annexation as presented
2. Modify the annexation to meet the wishes of the Council
3. Table the issue

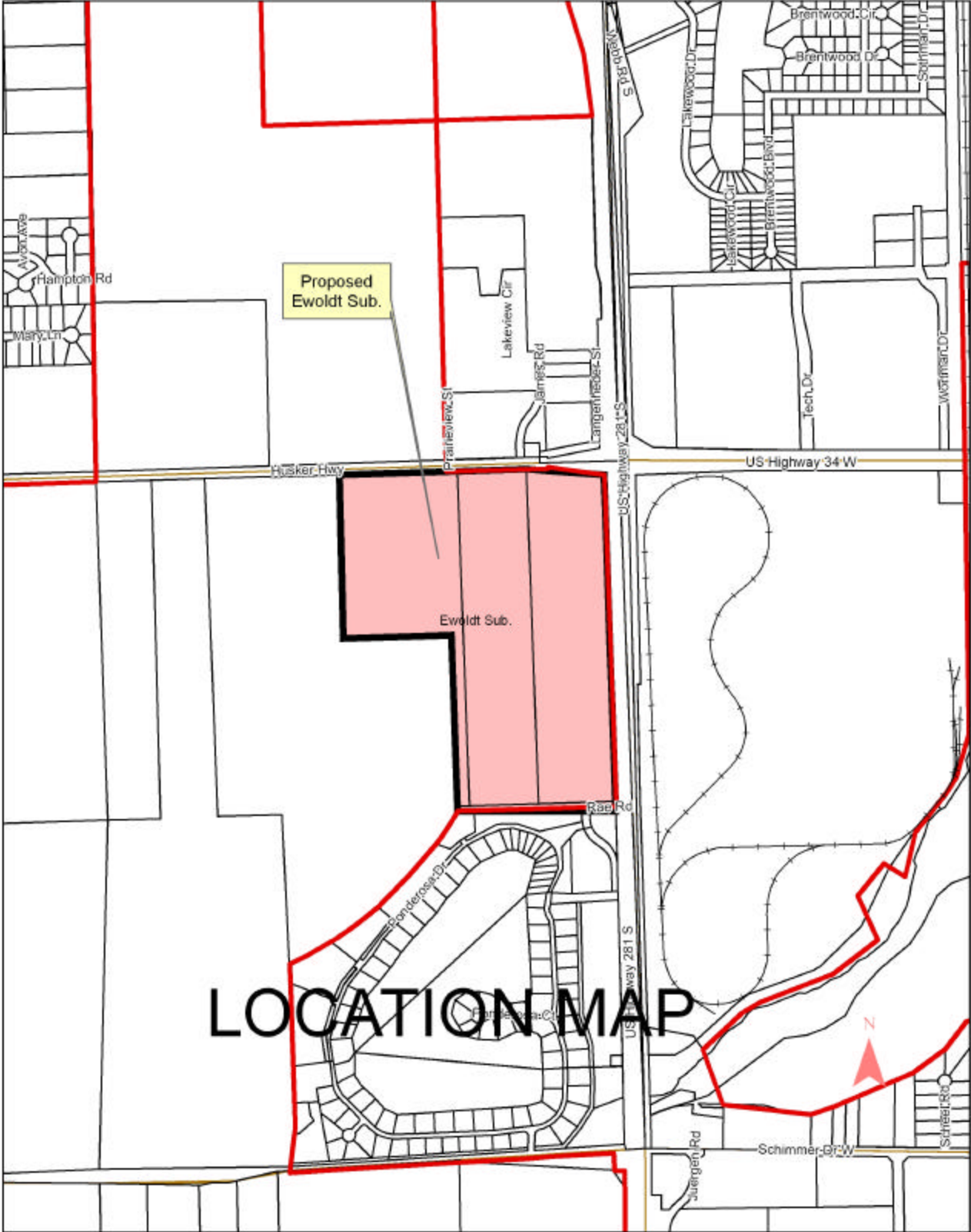
Recommendation

A motion was made by Amick 2nd by Miller to approve and recommend that the City of Grand Island **approve** this annexation and as presented.

A roll call vote was taken and the motion passed with 9 members present (Amick, Reynolds, O'Neill, Brown, Niemann, Miller, Eriksen, Ruge, Hayes) voting in favor.

Sample Motion

Approve the annexation as Submitted



* This Space Reserved for Register of Deeds *

ORDINANCE NO. 9032

An ordinance to annex Ewoldt Subdivision into the City of Grand Island; to repeal any ordinance or parts of ordinances in conflict herewith; and to provide for publication and the effective date of this ordinance.

WHEREAS, Husker Retail Development, L.L.C., a limited liability company, as owner, has caused to be laid out into lots, a tract of land comprising a part of the Northeast Quarter (NE1/4) of Section 36, Township 11 North, Range 10 West of the 6th P.M. in Hall County, Nebraska, under the name of EWOLDT SUBDIVISION, which is proposed to be an addition to the City of Grand Island; and

WHEREAS, after public hearing on February 1, 2006, the Regional Planning Commission recommended the approval of annexing such addition into the City of Grand Island; and

WHEREAS, after public hearing on February 14, 2006, the City Council found and determined that such annexation be approved.

Approved as to Form ☐ _____
March 23, 2006 ☐ City Attorney

ORDINANCE NO. 9032 (Cont.)

WHEREAS, such ordinance was approved on first reading on February 14, 2006;
and

WHEREAS, such ordinance was approved on second reading on February 28,
2006.

BE IT ORDAINED BY THE MAYOR AND COUNCIL OF THE CITY OF
GRAND ISLAND, NEBRASKA:

SECTION 1. That Ewoldt Subdivision is hereby annexed into the City of Grand
Island, and shall be entitled to all the rights and privileges, and shall be subject to all the laws,
ordinances, rules, and regulations of the City of Grand Island

SECTION 2. Any ordinances or parts of ordinances in conflict herewith be, and
hereby are, repealed.

SECTION 3. This ordinance shall be in force and take effect from and after its
passage and publication, within fifteen days in one issue of the Grand Island Independent as
provided by law.

Enacted: March 28, 2006.

Jay Vavricek, Mayor

Attest:

RaNae Edwards, City Clerk