



# City of Grand Island

Tuesday, March 28, 2006

Council Session

## Item E4

**Public Hearing Concerning Acquisition of Utility Easements -  
Stuhr and Swift Roads - Swift Beef Plant**

Staff Contact: Gary R. Mader

# **Council Agenda Memo**

**From:** Robert H. Smith, Asst. Utilities Director  
**Meeting:** March 28, 2006  
**Subject:** Acquisition of Utility Easements – Stuhr and Swift Roads – Swift Beef Plant  
**Item #'s:** E-4 & G-15  
**Presenter(s):** Gary R. Mader, Utilities Director

## **Background**

Nebraska State Law requires that acquisition of property must be approved by City Council. The Utilities Department needs to acquire two easements relative to the property of Swift Beef Company, located at the northwest corner of Swift Beef Plant (Lot 46), and south of Swift Road, north of the Swift Beef Plant and west of the guard shack (Lot 50), in the City Of Grand Island, Hall County, in order to have access to install, upgrade, maintain, and repair power appurtenances, including lines and transformers.

## **Discussion**

The easement nearest to Stuhr Road (Lot 46) will add to an existing easement. The transformer was placed farther east than the easement previously acquired. The easement adjacent to Swift Road (Lot 50) will be used to place a pad-mounted transformer and underground cable to serve electricity to a new lab building.

## **Alternatives**

It appears that the Council has the following alternatives concerning the issue at hand. The Council may:

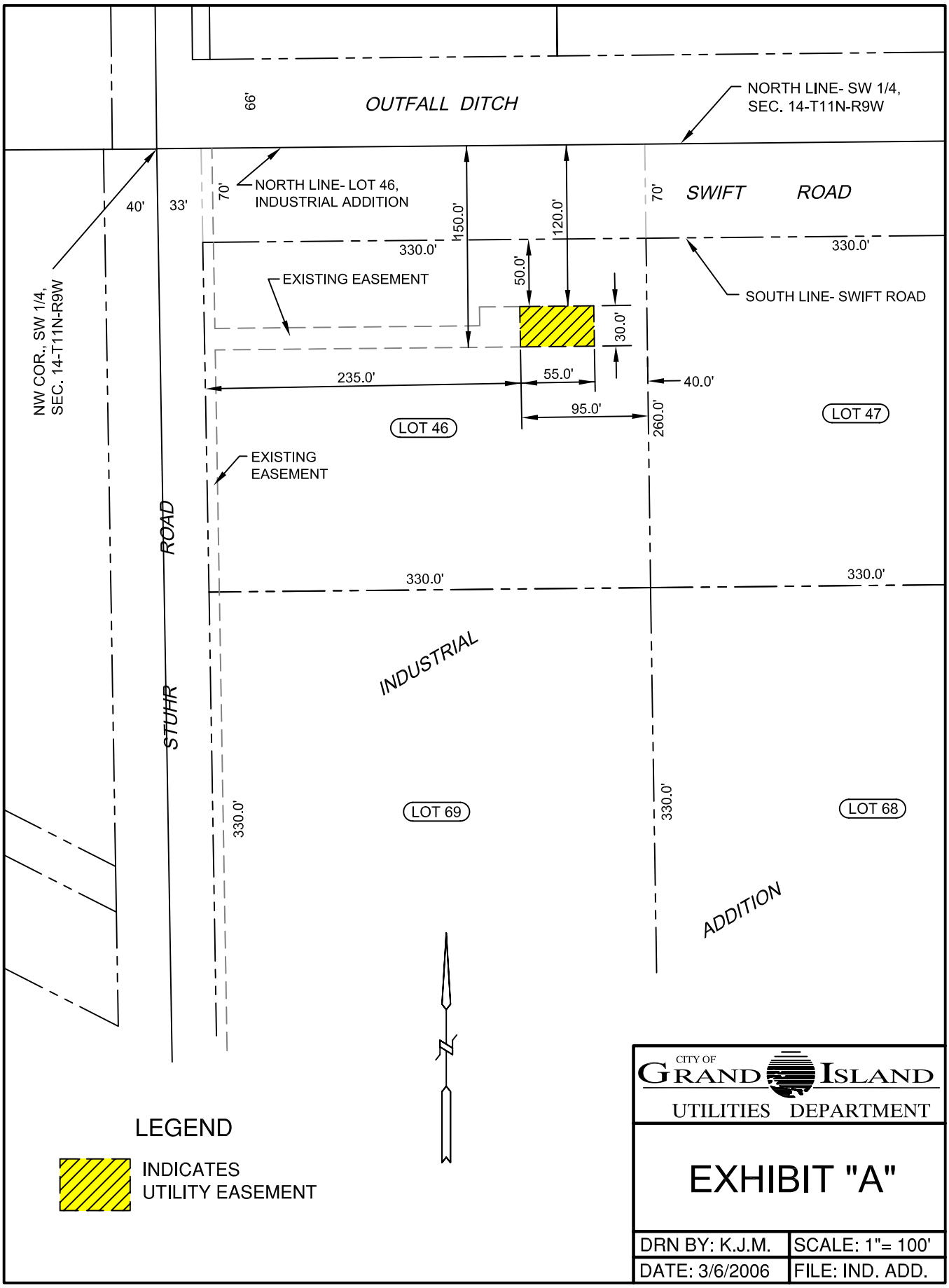
1. Make a motion to approve
2. Refer the issue to a Committee
3. Postpone the issue to future date
4. Take no action on the issue

## **Recommendation**


City Administration recommends that the Council approve the resolution for the acquisition of the easements for one dollar (\$1.00) each.

## **Sample Motion**

Motion to approve acquisition of the Utility Easements.



**LEGEND**

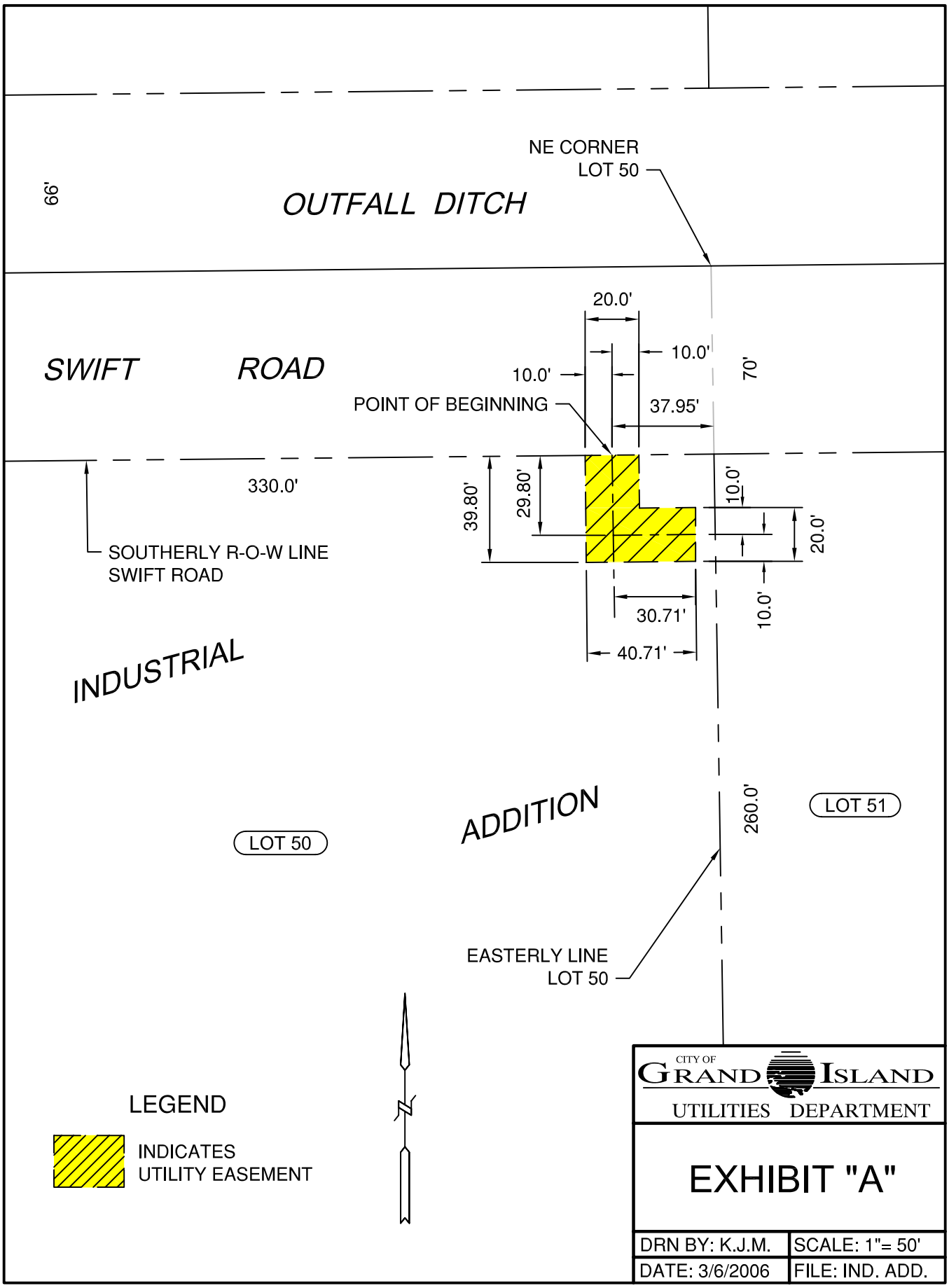
 INDICATES UTILITY EASEMENT



CITY OF **GRAND ISLAND**  
 UTILITIES DEPARTMENT

**EXHIBIT "A"**

DRN BY: K.J.M.	SCALE: 1" = 100'
DATE: 3/6/2006	FILE: IND. ADD.



**LEGEND**

 INDICATES UTILITY EASEMENT



CITY OF  
**GRAND ISLAND**  
 UTILITIES DEPARTMENT

**EXHIBIT "A"**

DRN BY: K.J.M.	SCALE: 1" = 50'
DATE: 3/6/2006	FILE: IND. ADD.