



City of Grand Island

Tuesday, February 28, 2006

Council Session

Item G9

**#2006-64 - Approving Designation of Loading Zone on Oak Street,
Vine Street, and Bismark Road adjacent to Dodge School**

Staff Contact: Steven P. Riehle, Public Works Director

Council Agenda Memo

From: Steven P. Riehle, Public Works Director

Meeting: February 28, 2006

Subject: Approving Designation of Loading Zone on Oak Street, Vine Street, and Bismark Road adjacent to Dodge School

Item #'s: G-9

Presenter(s): Steven P. Riehle, Public Works Director

Background

Council action is required for the installation of loading zones on City streets. Section 22-82 of the city code is relative to loading zones.

§22-82. Loading Zones

It shall be unlawful for the driver of any vehicle to stop, park, or leave such vehicle standing at any designated loading or unloading zone for a period of time longer than twenty minutes, except when necessary for the expeditious loading or unloading of passengers, merchandise, or materials.

The Traffic Division shall designate such loading and unloading zones by causing the curb to be painted yellow, and shall either paint on such curb or sidewalk above it the words, "Loading Zone," or shall cause suitable markers to be placed thereat containing such words.

Discussion

The Public Works Department and the Police Department have been working with Dodge School staff and the PTA to improve pedestrian and vehicular safety near the school. A meeting was held on February 13, 2006 at Dodge School. A report from the meeting is attached. The recommendation for the Loading Zones adjacent to the school requires a resolution passed by the city council.

The recommended Loading Zones adjacent to the school are as follows:

- 1) Loading Zone on the north side of Bismark Road from Oak Street to Vine Street.
- 2) Loading Zone on the East side of Oak Street form the north curb of Bismark Road north for 300'.

- 3) Loading Zone on the west side of Vine Street from the north curb of Bismark Road north for 300'.

Alternatives

It appears that the Council has the following alternatives concerning the issue at hand. The Council may:

1. Approve the designation of the loading zones.
2. Refer the issue to a Committee.
3. Postpone the issue to a future date.
4. Take no action on the issue.

Recommendation

City Administration recommends that the Council pass a resolution to approve the designation of loading zones on Oak Street, Vine Street, and Bismark Road adjacent to Dodge Elementary School.

Sample Motion

Move to approve the designation of the loading zones.

February 13th

~~January 19, 2006~~

To Whom It May Concern:

As parents of Dodge Elementary students, the Dodge PTA agrees that something needs to be done about the traffic around the school at drop off and pick up times. We stand behind the idea of one-way streets for certain times of the day. If there are other suggestions, we are open to hearing about them. We are concerned for the safety of all our students at Dodge. Thank you for your consideration in this matter.

Rachel Schroeder
Secretary -Dodge PTA

Stephani Schulte, Principal

Sally Cunningham, co-president PTA

Claudia Perez - Co-president PTA

On February 13, 2006 the Dodge School PTA met to discuss ideas to improve both the pedestrian and vehicular safety near the school when parents are dropping off and picking up children. The following individuals were present at the meeting: Council Members Meyer and Whitesides, Public Works Director, Steve Riehle, Grand Island Police Department Sergeant Jerry Atwell, School Principal, Stephanie Schulte, a Dodge School teacher, PTA Board members and general PTA members.

Short Term Solutions

Short term solutions to be implemented:

- 1) Designation of loading and unloading zones abutting school property.
- 2a) Remove the cross walk that is on Oak Street just north of Bismark Road.
- 2b) Use portable signs at the existing cross walk on Oak Street that line up with the sidewalk to the school (approximately 130' north of Bismark Road).
- 3) Use portable signs at the cross walk on Bismark Road.
- 4a) Remove the crosswalk that is on Vine Street just north of Bismark Road.
- 4b) Install a new cross walk on Vine Street that lines up with the sidewalk to the school (approximately 75' north of Bismark Road).

The conditions around the school will be monitored after the short term solutions have been implemented to determine the effectiveness.

Long Term Solutions

Long term options that were discussed and could be considered if additional safety considerations are needed are as follows:

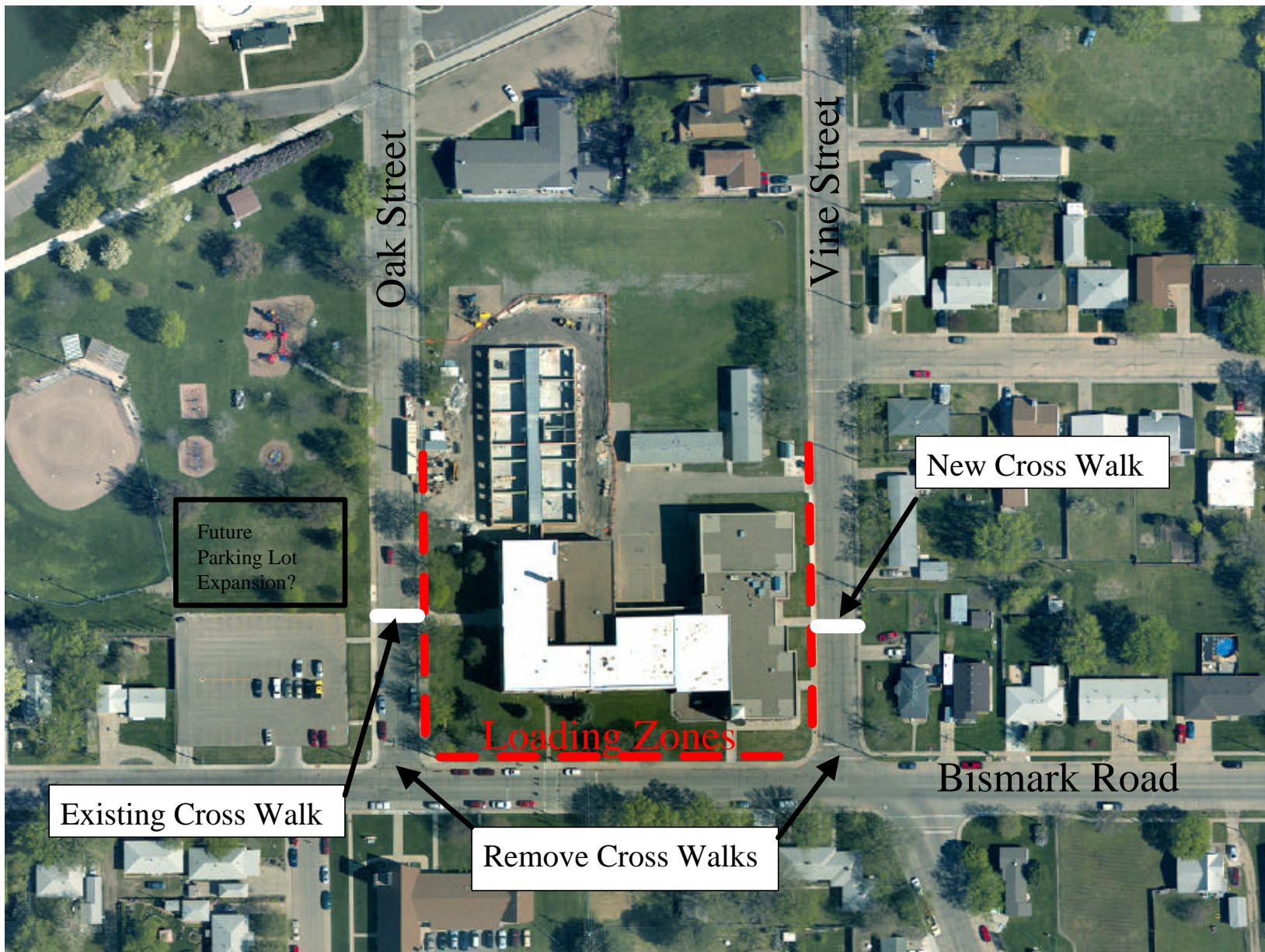
- 1) Expand the parking lot at the Northwest corner of Oak Street and Bismark Road. This would allow a student drop off area to be designated in the parking lot.
- 2) Consider volunteer one ways like a number of Lincoln, NE schools are using. Refer to the website @ <http://www.lincoln.ne.gov/city/pworks/engine/trafsaf/schools/safety/oneway.htm> for details.
- 3) Consider a 3 way stop at the intersection of Oak Street and Bismark Road.

Summary

The city council will be asked to consider approving loading zones at the February 28, 2006 regular meeting.

The Public Works Department will order portable signs and move the cross walks.

A sketch detailing the short term solutions is attached.



Oak Street

Vine Street

New Cross Walk

Future
Parking Lot
Expansion?

Loading Zones

Existing Cross Walk

Remove Cross Walks

Bismark Road

RESOLUTION 2006-64

WHEREAS, the City Council, by authority of Section 22-77 of the Grand Island City Code may, by resolution, entirely prohibit, or fix a time limit for the parking and stopping of vehicles in or on any public street, public property, or portion thereof; and

WHEREAS, the Public Works Department and the Police Department have been working with Dodge School staff and the Parent Teacher Association to improve pedestrian and vehicular safety near Dodge School; and

WHEREAS, it is recommended that the following loading zones be implemented:

1. North side of Bismark Road, from Oak Street to Vine Street
2. East side of Oak Street from the north curb of Bismark Road north for 300 feet
3. West side of Vine Street from the north curb of Bismark Road north for 300 feet

WHEREAS, the proposed parking restrictions will allow parking for no more than 20 minutes for the expeditious loading or unloading of passengers, merchandise, or materials; and

WHEREAS, it is in the best interests of the City to effect such regulations.

NOW, THEREFORE, BE IT RESOLVED BY THE MAYOR AND COUNCIL OF THE CITY OF GRAND ISLAND, NEBRASKA, that Loading Zones be implemented near Dodge School as identified above.

BE IT FURTHER RESOLVED, that the Street Department is hereby directed to erect and maintain the signs and street markings necessary to effect the above regulations.

- - -

Adopted by the City Council of the City of Grand Island, Nebraska, February 28, 2006.

Margaret Hornady
City Council President / Interim Mayor

Attest:

Approved as to Form	☐ _____
February 23, 2006	☐ City Attorney

RaNae Edwards, City Clerk