



# City of Grand Island

Tuesday, February 28, 2006

Council Session

## Item F1

**#9032 - Consideration of Annexation of Property Proposed for Platting as Ewoldt Addition Located South of Husker Highway and West of U.S. Highway 281 (Second Reading)**

Staff Contact: Chad Nabity

# Council Agenda Memo

**From:** Regional Planning Commission  
**Meeting:** March 7, 2006  
**Subject:** Annexation - (Second Reading)  
**Item #'s:** F-1  
**Presenter(s):** Chad Nabity AICP, Regional Planning Director

## Background

Annexation of land proposed for platting as Ewoldt Subdivision an addition to the City of Grand Island, located in the NE ¼ 36-11-10 into the Grand Island City Limits.

## Discussion

This property is contiguous with the Grand Island City Limits. The owners have requested this annexation by proposing to plat this property as an addition to the City.

This property is substantially within the Grand Island Utilities Electrical Service District. Sewer and water are available to this property. This property is within the Cedar Hollow/Northwest School Districts. This annexation will not impact the two-mile extraterritorial jurisdiction of Grand Island.

## Alternatives

It appears that the Council has the following alternatives concerning the issue at hand. The Council may:

1. Approve the annexation as presented
2. Modify the annexation to meet the wishes of the Council
3. Table the issue

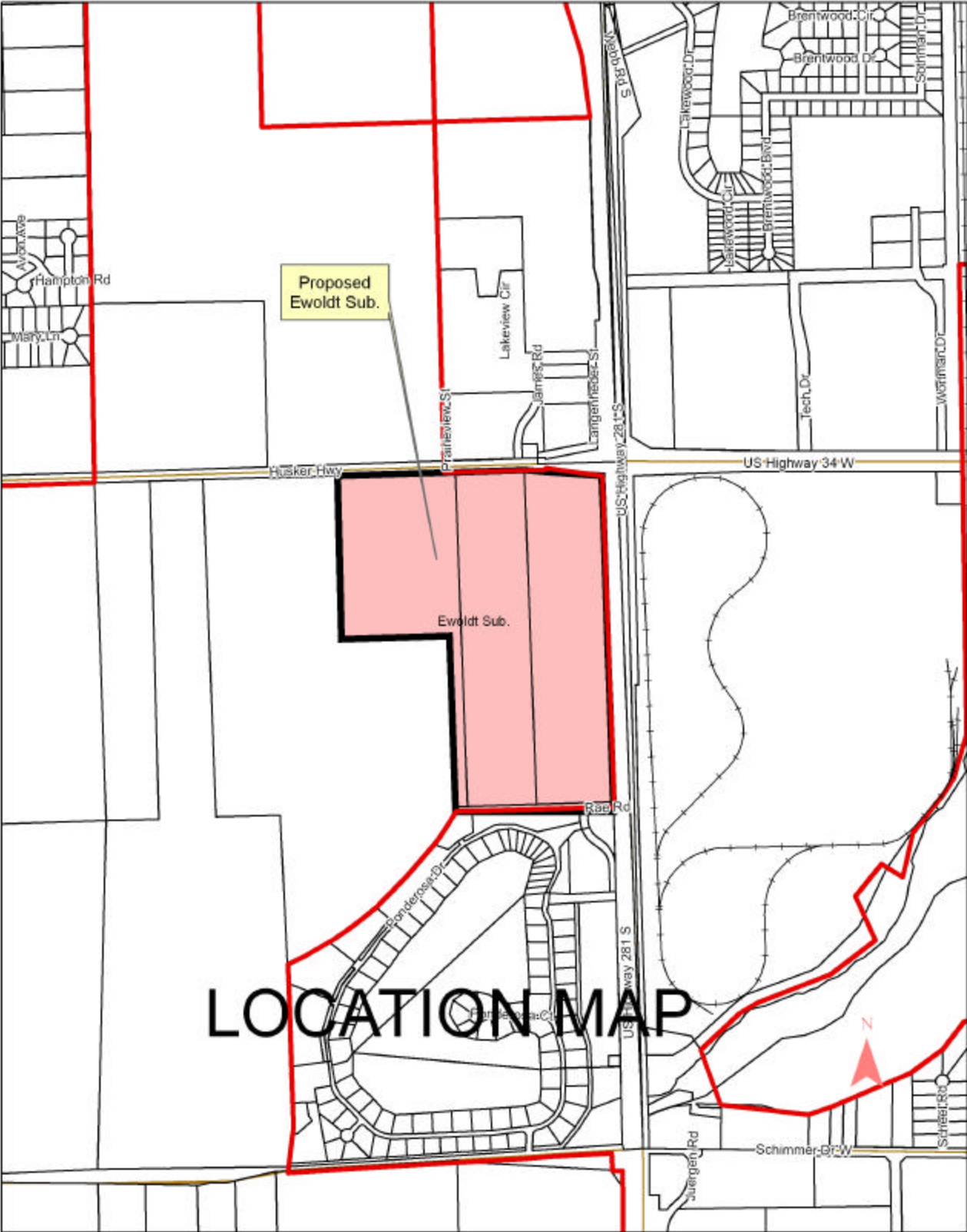
## Recommendation

A motion was made by Amick 2<sup>nd</sup> by Miller to approve and recommend that the City of Grand Island **approve** this annexation and as presented.

A roll call vote was taken and the motion passed with 9 members present (Amick, Reynolds, O'Neill, Brown, Niemann, Miller, Eriksen, Ruge, Hayes) voting in favor.

## Sample Motion

Approve the annexation as Submitted



\* This Space Reserved for Register of Deeds \*

ORDINANCE NO. 9032

An ordinance to annex Ewoldt Subdivision into the City of Grand Island; to repeal any ordinance or parts of ordinances in conflict herewith; and to provide for publication and the effective date of this ordinance.

WHEREAS, Husker Retail Development, L.L.C., a limited liability company, as owner, has caused to be laid out into lots, a tract of land comprising a part of the Northeast Quarter (NE1/4) of Section 36, Township 11 North, Range 10 West of the 6<sup>th</sup> P.M. in Hall County, Nebraska, under the name of EWOLDT SUBDIVISION, which is proposed to be an addition to the City of Grand Island; and

WHEREAS, after public hearing on February 1, 2006, the Regional Planning Commission recommended the approval of annexing such addition into the City of Grand Island; and

WHEREAS, after public hearing on February 14, 2006, the City Council found and determined that such annexation be approved; and

Approved as to Form    ☐ \_\_\_\_\_  
February 23, 2006        ☐ City Attorney

ORDINANCE NO. 9032 (Cont.)

WHEREAS, such ordinance was approved by the City Council on first reading on February 14, 2006.

BE IT ORDAINED BY THE MAYOR AND COUNCIL OF THE CITY OF GRAND ISLAND, NEBRASKA:

SECTION 1. That Ewoldt Subdivision is hereby annexed into the City of Grand Island, and shall be entitled to all the rights and privileges, and shall be subject to all the laws, ordinances, rules, and regulations of the City of Grand Island

SECTION 2. Any ordinances or parts of ordinances in conflict herewith be, and hereby are, repealed.

SECTION 3. This ordinance shall be in force and take effect from and after its passage and publication, within fifteen days in one issue of the Grand Island Independent as provided by law.

Approve on Second Reading on February 28, 2006.

---

Margaret Hornady,  
City Council President / Interim Mayor

Attest:

---

RaNae Edwards, City Clerk