



City of Grand Island

Tuesday, February 14, 2006

Council Session

Item E7

Public Hearing Concerning Annexation of Property Proposed for Platting as Ewoldt Subdivision an Addition to the City of Grand Island, Located South of Husker Highway and West of U.S. Highway 281

Staff Contact: Chad Nabity

Council Agenda Memo

From: Regional Planning Commission
Meeting: February 14, 2006
Subject: Annexation
Item #'s: E-7 & F-7
Presenter(s): Chad Nabyt AICP, Regional Planning Director

Background

Annexation of land proposed for platting as Ewoldt Subdivision an addition to the City of Grand Island, located in the NE ¼ 36-11-10 into the Grand Island City Limits.

Discussion

This property is contiguous with the Grand Island City Limits. The owners have requested this annexation by proposing to plat this property as an addition to the City.

This property is substantially within the Grand Island Utilities Electrical Service District. Sewer and water are available to this property. This property is within the Cedar Hollow/Northwest School Districts. This annexation will not impact the two-mile extraterritorial jurisdiction of Grand Island.

Alternatives

It appears that the Council has the following alternatives concerning the issue at hand. The Council may:

1. Approve the annexation as presented
2. Modify the annexation to meet the wishes of the Council
3. Table the issue

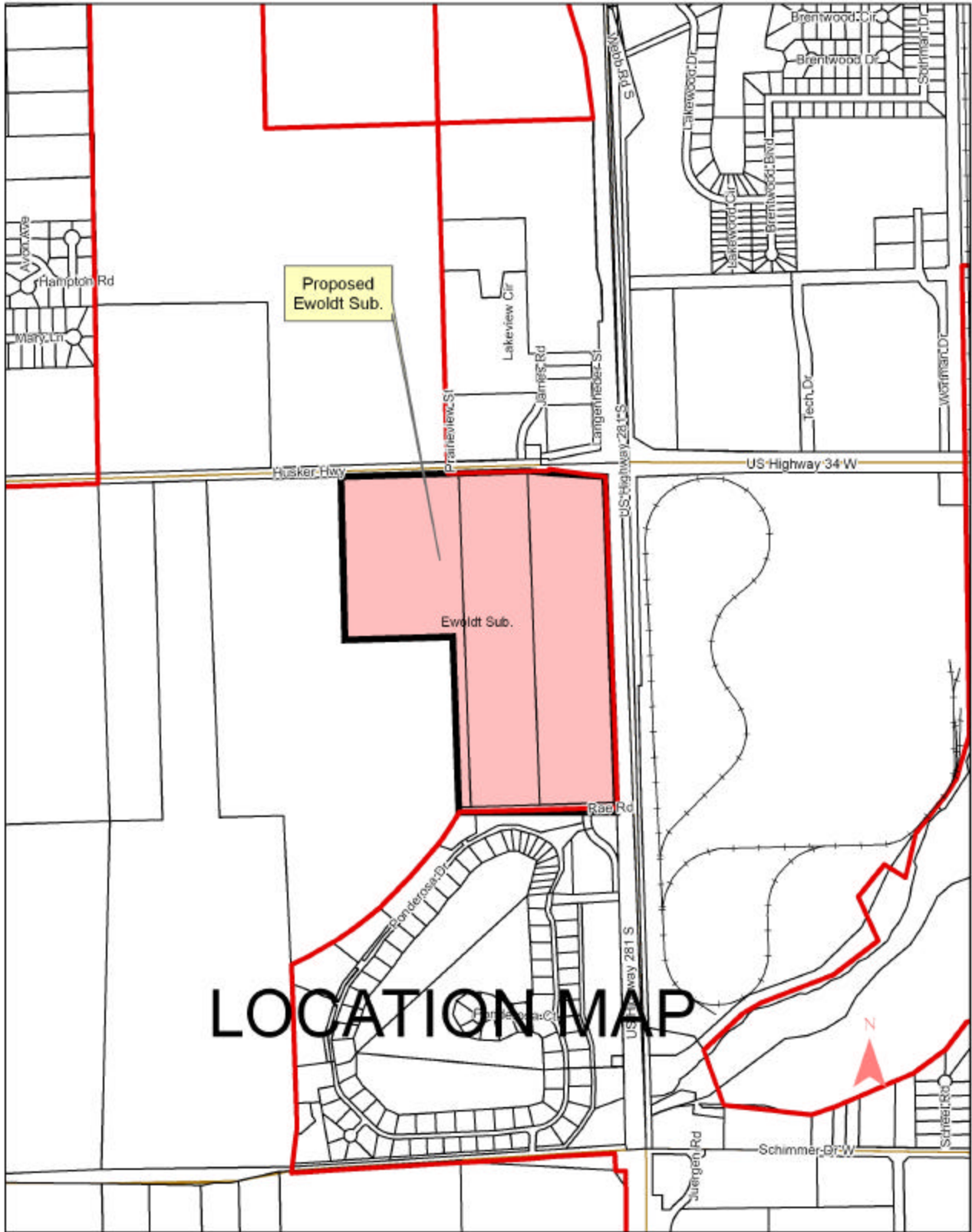
Recommendation

A motion was made by Amick 2nd by Miller to approve and recommend that the City of Grand Island **approve** this annexation and as presented.

A roll call vote was taken and the motion passed with 9 members present (Amick, Reynolds, O'Neill, Brown, Niemann, Miller, Eriksen, Ruge, Hayes) voting in favor.

Sample Motion

Approve the annexation as Submitted.



ANNEXATION PLAN –November 2005

November 14, 2005

OVERVIEW

Section 16-117 of The Nebraska State Statute allows municipalities of the first class to annex any contiguous or adjacent lands, lots, tracts, streets, or highways that are urban or suburban in character and in such direction as may be deemed proper.

Regulations governing municipal annexation were implemented in order to develop an equitable system for adding to and increasing city boundaries as urban growth occurs. Areas of the community that are urban in nature, and are contiguous to existing boundaries, are appropriate for consideration of annexation.

Annexation of urban areas adjacent to existing city boundaries can be driven by many factors. The following are reasons annexation should be considered:

1. Governing urban areas with the statutorily created urban form of government, municipalities have historically been charged with meeting the needs of the expanded community.
2. Provide municipal services. Municipalities are created to provide the governmental services essential for sound urban development and for the protection of health, safety and well being of residents in areas that are used primarily for residential, industrial, and commercial purposes.
3. Ensure orderly growth pursuant to land use, building, street, sidewalk, sanitary sewer, storm sewer, water, and electrical services.
4. Provide more equitable taxation to existing property owners for the urban services and facilities that non-city residents in proposed annexation areas use on a regular basis such as parks, streets, public infrastructure, emergency services, retail businesses and associated support.
5. Ensure ability to impose and consistently enforce planning processes and policies.
6. Address housing standards and code compliance to positively impact quality of life for residents.
7. Enable residents of urban areas adjacent to city to participate in municipal issues, including elections that either do or will have an impact on their properties.
8. Anticipate and allocate resources for infrastructure improvements. Specifically, changes in October, 1999 to Nebraska Department of Environmental Quality Regulation Title 124 concerning on site waste water treatment systems impacts new and replacement private septic systems.
9. Assist in population growth to enable community to reach Community Development Block Grant entitlement status – 50,000. Entitlement communities automatically receive Community Development block grant dollars; no competitive process required.
10. Increase number of street or lane miles while increasing gas tax dollars received from the Nebraska Department of Roads.
11. Provide long term visioning abilities as it relates to growth and provision of services.

Other Factors

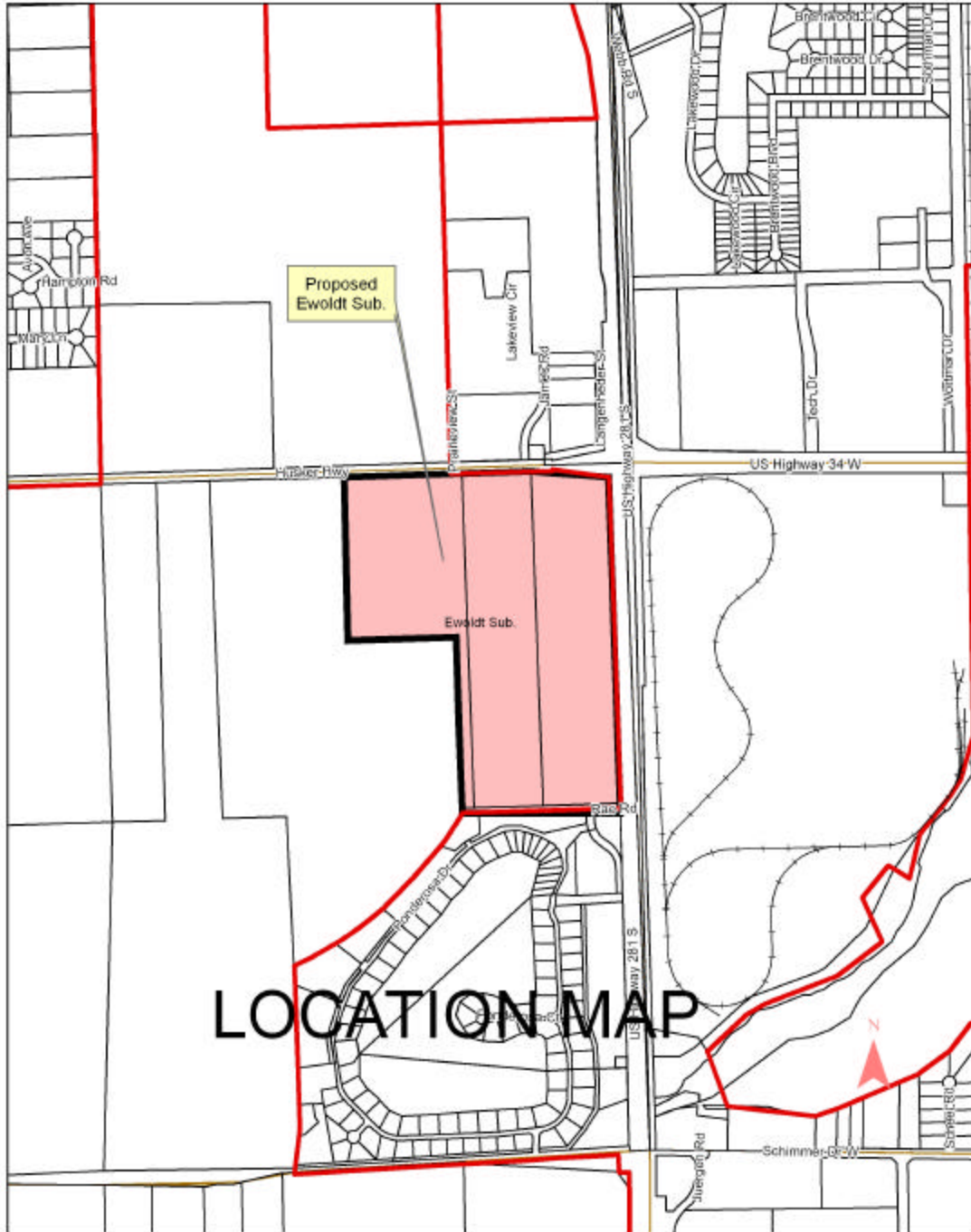
Annexation of adjacent properties can also be considered upon the request of the owner(s) of the property. Husker Retail LLC has submitted a plat for the Ewoldt Addition to the City of Grand Island for approval. This plat is concerned with property in the NE ¼ of 36-11-10. They are platting this property with the intent of developing it for commercial purposes. Submission of a final plat as an addition to the City is done when the developer wishes the City to annex the property.

A comprehensive inventory of services and facilities, relative to the types and level of services currently being provided as well as the types of level of services anticipated as a result of annexation, has been developed.

The inventory includes general information concerning:

- Existing infrastructure in affected area(s)
- Summary of expenditures to extend existing infrastructure
- Summary of operating expenditures associated with increased services
- Emergency services

The service plan incorporates detailed elements of the inventory. The inventory and resulting service plan should be the basis for discussions concerning each specific area identified for potential annexation. ***It should be noted that the capital improvements to existing infrastructure and extending services will take place over a period of time in order to ensure adequate time for planning, designing, funding and constructing such a sizable number of projects while protecting the financial integrity of the City's enterprise funds. The service plan provides for extending the trunk water and sanitary sewer lines to the annexed area. Individual property owners will be responsible for the cost of extending services through neighborhoods and for connecting their properties to the public systems.***



General Description of the Property

This property is located in the western part of the community. It is south of Husker Highway and west of U.S. Highway 281. The City of Grand Island provides electric services to the area. Sewer and water are both available to this property. The property is currently being farmed. There are no habitable structures on the property. The proximity to the existing city limits and municipal infrastructure makes this property suburban in character and ready for development.

INVENTORY OF SERVICES

1. **Police Protection.** The City of Grand Island Police Department will provide protection and law enforcement services in the annexation area. These services include:

- Normal patrols and responses
- Handling of complaints and incident reports
- Investigation of crimes
- Standard speed and traffic enforcement
- Special units such as traffic enforcement, criminal investigations, narcotics, and gang suppression

These services are provided, on a city-wide basis, by over 89.75 employees. The Police Department is staffed at a rate of 1.72 officers per one thousand population. No additional officers will be necessary to maintain this ratio if all proposed area is annexed.

2. **Fire Protection.** The City of Grand Island Fire Department will provide emergency and fire prevention services in the annexation area. These services include:

- Fire suppression and rescue
- Hazardous materials incident response
- Periodic inspections of commercial properties
- Public safety education

These services are provided, on a city-wide basis, by 69 employees operating from four fire stations. The nearest fire station is Station #3 located on Webb Road south of Stolley Park Road.

3. **Emergency Medical Services.** The City of Grand Island is the current provider of local emergency medical services in the city and will provide this service in the annexed area.

- Emergency medical and ambulance services
- Emergency dispatch (provided by the City/County Emergency Management Department)

The City of Grand Island Fire Department provides these services, on a city-wide basis. Fire personnel are emergency medical technicians and 27 are certified paramedics.

4. Wastewater (Sanitary Sewer). The City of Grand Island will provide sanitary sewer services in the area through existing sewer lines. No city costs would be anticipated. Sewer is adjacent to the property and the property owner will be responsible for extending lines with development.

5. Maintenance of Roads and Streets. The City of Grand Island, Public Works Department, will maintain public streets over which the City has jurisdiction. These services include:

- Snow and ice removal
- Emergency pavement repair
- Preventative street maintenance
- Asphalt resurfacing
- Ditch and drainage maintenance
- Sign and signal maintenance
- Asphalt resurfacing

Portions of Husker Highway are already maintained by the City of Grand Island

6. Electric Utilities. This Annexation area is currently provided electrical services by the City of Grand Island. The easterly 80 acres is in the Grand Island Utilities Service territory and the west 20 acres is in the Southern Public Power District territory and will be brought into the Grand Island Utilities territory with this annexation. The services appear adequate to meet the needs of the area. These services include:

- Electric utility services
- Street lights

7. Water Utilities. The City of Grand Island, Utilities Department, currently maintains the water utilities services for the proposed annexation area. Water lines are available and the developer will be responsible for the extending water lines to serve the development.

8. Maintenance of Parks, Playgrounds, and Swimming Pools No impact is anticipated as a result of annexation. Recreation facilities and area amenities, including parks and pools, that are privately owned and operated, or operated and maintained by another governmental entity, will be unaffected by the annexation.

9. Building Regulations. The City of Grand Island, Building Department, will oversee services associated with building regulations, including:

- Commercial Building Plan Review
- Residential Building Plan Review
- Building Permit Inspections and Issuance
- Investigation of complaints relative to Minimum Housing Standards
- Regulation of Manufactured Home Parks
- Investigation of Illegal Business Complaints

- Investigation and Enforcement of Zoning Violations

10. Code Compliance. The City of Grand Island’s Legal Department and Code Compliance division will continue to provide the following services associated with enforcing compliance with the City Code:

- Enforcement Proceedings for Liquor and Food Establishment Violations
- Investigation and Enforcement of Complaints Regarding Junked Vehicles and Vehicle Parts, Garbage, Refuse and Litter
- Investigation of Enforcement of Complaints Regarding Weed and Animal Violations Providing Enforcement Support to Other Departments for City Code and Regulatory Violations

11. Other City Services. All other City Departments with jurisdiction in the area will provide services according to city policies and procedures.

Summary of Impacts	
Police Protection	No Impact
Fire Protection	No Impact
Emergency Medical Services	No Impact
Wastewater	Available
Roads and Streets	No Impact
Electric Service	Already in GI Service Area
Water Service	Available
Parks, Playgrounds and Swimming Pools	No Impact
Building Regulations	Already Subject to GI Regulations
Code Compliance	Already Subject to GI Regulations
Other	No Impact
School District	In Cedar Hollow/Northwest School District

Financial Impacts of Capital Avenue Properties Annexation

Financial Impact	Before Annex	After Annex
Property Valuation	\$158,738	\$158,738
City sales tax now applicable	none	1.5%
Assume \$235,839 Value		
2004 City property taxes	0	0.250001/\$396.85.
Community Redevelopment Authority	0	0.024287/\$38.55
Rural fire services	0.06034/\$95.78	0/\$0
Fire Bond	0.014679/\$23.30	0.014679/\$23.30*
Cedar Hollow to GIPS	1.120223/\$1778.22	1.075781/\$1707.67
CH Bond	0.076716/\$121.77	0.076716/\$121.77*
NW Bond	0.067911/\$107.80	0.067911/\$107.80*

Hall County, ESU, Community College, NRD and other levies will not change.

Total property tax levy	1.880403/\$2984.91	2.041857/\$3253.98
-------------------------	--------------------	--------------------

Depending on development these properties will connect to city water and sewer services and generate revenue for those enterprise funds based on the rate structure and usage.

*previously approved bonds will remain with property until paid off

