



City of Grand Island

Tuesday, February 14, 2006

Council Session

Item E2

**Public Hearing Concerning Acquisition of Utility Easement -
Along the East Side of Engleman Road from Potash Highway
South 1/2 Mile - Hargens**

Staff Contact: Gary R. Mader

Council Agenda Memo

From: Robert H. Smith, Asst. Utilities Director
Meeting: February 14, 2006
Subject: Acquisition of Utility Easement – Along the east side of Engleman Road from Potash Hwy, south ½ mile - Hargens
Item #'s: E-2 & G-8
Presenter(s): Gary R. Mader, Utilities Director

Background

Nebraska State Law requires that acquisition of property must be approved by City Council. The Utilities Department needs to acquire an easement relative to the property of Glenwood H. Hargens, Trustee of the Jane H. Hargens Family Trust, and Trustee of the Hargens Family Joint Revocable Trust, located along the east side of Engleman Road from Potash Highway, south ½ mile, located in Hall County, in order to have access to install, upgrade, maintain, and repair power appurtenances, including lines and transformers.

Discussion

This easement will be used to continue the overhead electrical feeder along Engleman Road. The new poles will be placed 39' from the centerline of Engleman Road which will match the right-of-way when the property is developed.

Alternatives

It appears that the Council has the following alternatives concerning the issue at hand. The Council may:

1. Make a motion to approve
2. Refer the issue to a Committee
3. Postpone the issue to future date
4. Take no action on the issue

Recommendation

City Administration recommends that the Council approve the resolution for the acquisition of the easement for one dollar (\$1.00).

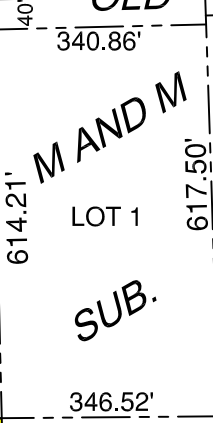
Sample Motion

Motion to approve acquisition of the Utility Easement.

NW CORNER- NW 1/4,
SECTION 23-T11N-R10W

OLD POTASH HWY

SECTION LINE



HIGHLAND

ENGLEMAN ROAD

PARK


NW 1/4
SECTION 23-T11N-R10W

SUB.

SECTION LINE



LEGEND

 INDICATES 7' WIDE
UTILITY EASEMENT

SW CORNER- NW 1/4,
SECTION 23-T11N-R10W

SOUTH LINE NW 1/4,
SECTION 23-T11N-R10W

1/4 SECTION LINE

CITY OF GRAND ISLAND	
UTILITIES DEPARTMENT	
EXHIBIT "A"	
DRN BY: K.J.M.	SCALE: 1"= 300'
DATE: 1/17/2006	FILE: SEC 23.11.10