



City of Grand Island

Tuesday, January 24, 2006

Council Session

Item F3

**#9025 - Consideration of Amendment to Ordinance No. 8982
Relative to Annexation Area No. 1**

Staff Contact: Chad Nabity

Council Agenda Memo

From: Chad Nabity, AICP Regional Planning Director
Meeting: January 24, 2006
Subject: Amended Annexation Ordinance
Item #'s: F-3
Presenter(s): Chad Nabity, AICP Regional Planning Director

Background

On July 26th, 2005 the Grand Island City Council passed Ordinance #8982 - Consideration of Annexation of Land Located North of Capital Avenue and East of St. Paul Road and Various Properties Adjacent to the City of Grand Island.

Discussion

While reviewing the annexation actions of the past year the Planning Department discovered an error on a dimension in the legal description and plat of the annexation of property located north of Capital Avenue and east of St. Paul Road (Annexation Area #1). This ordinance corrects the legal description for that property and includes an updated exhibit with corrected dimensions.

Alternatives

It appears that the Council has the following alternatives concerning the issue at hand. The Council may:

1. Approve the ordinance amendment
2. Disapprove or /Deny the ordinance amendment
3. Modify the ordinance amendment to meet the wishes of the Council
4. Table the issue

Recommendation

City Administration recommends that the Council approve the amended ordinance.

Sample Motion

Approve the amended ordinance as submitted.

* This Space Reserved for Register of Deeds *

ORDINANCE NO. 9025

An ordinance to amend Ordinance No. 8982; to correct the legal description and plat for Area No. 1 described in Ordinance No. 8982; to repeal any ordinance or parts of ordinances in conflict herewith; and to provide for publication and the effective date of this ordinance.

WHEREAS, on July 26, 2005, Ordinance No. 8982 was approved on final reading by the City Council to annex five areas into the City of Grand Island; and

WHEREAS, a correction to the legal description and plat for Area No. 1 is necessary to further clarify the land to be annexed.

BE IT ORDAINED BY THE MAYOR AND COUNCIL OF THE CITY OF GRAND ISLAND, NEBRASKA:

SECTION 1. The legal description for Annexation Area No. 1 identified in Ordinance No. 8982 is hereby corrected to read as follows:

Beginning at a point where the north line of Capital Avenue intersects the west line of the Ord. Branch of the Union Pacific Railroad; thence north on the west line of the Ord. Branch of the Union Pacific Railroad for a distance of 482.61 feet more or less; thence west on a line 516 feet north of and parallel to the south line of Section 3-11-9 for a distance of 295.53 feet; thence south on a line perpendicular to the south line

Approved as to Form ☐ _____
January 18, 2006 ☐ City Attorney

ORDINANCE NO. 9025 (Cont.)

of Section 3-11-9 for a distance of 483 feet to the north line of Capital Avenue thence east on the north line of Capital Avenue to the point of beginning, as shown on Exhibit "A" attached hereto and incorporated herein by this reference.

SECTION 2. Any ordinances or parts of ordinances in conflict herewith be, and hereby are, repealed.

SECTION 3. This ordinance shall be in force and take effect from and after its passage and publication, within fifteen days in one issue of the Grand Island Independent as provided by law.

Enacted: January 24, 2006.

Jay Vavricek, Mayor

Attest:

RaNae Edwards, City Clerk

PART S.E. 1/4, S.W. 1/4

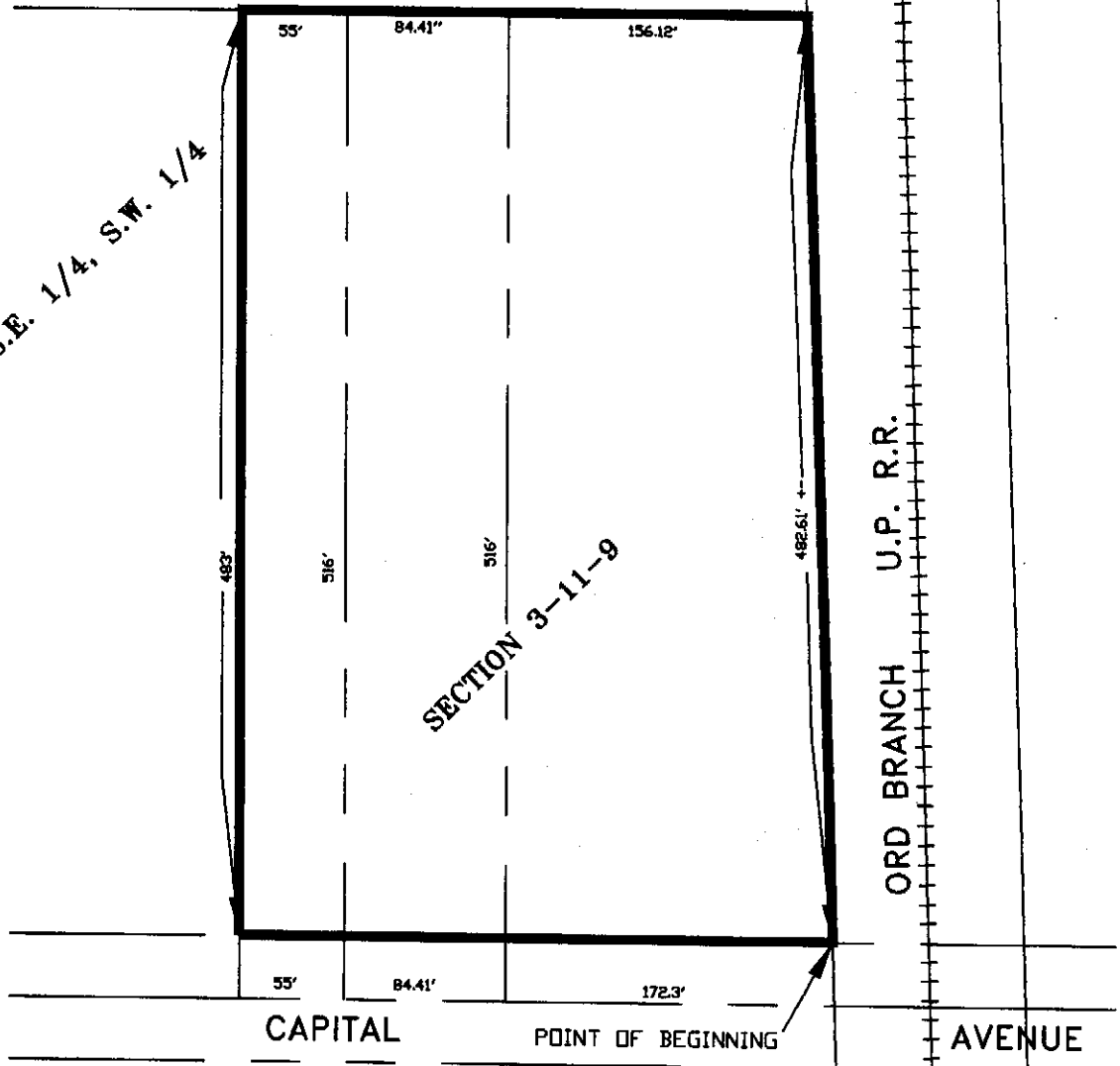


EXHIBIT "A"

CITY OF
GRAND ISLAND
PUBLIC WORKS DEPARTMENT

DATE: 1/10/06
DRN BY: L.D.C.
SCALE: 1"=100'

PLAT TO ACCOMPANY
ANNEXATION AMENDMENT