



City of Grand Island

Tuesday, January 24, 2006

Council Session

Item D1

#2006-BE-1 - Consideration of Determining Benefits for Sanitary Sewer District No. 515; Dale Roush Subdivision (Indian Acres)

Staff Contact: Steven P. Riehle, Public Works Director

Council Agenda Memo

From: Steven P. Riehle, Public Works Director

Meeting: January 24, 2006

Subject: Board of Equalization Hearing to Determine Benefits and Consideration of an Ordinance Levying Assessments for Sanitary Sewer District No. 515; Dale Roush Subdivision (Indian Acres)

Item #'s: D-1 & F-1

Presenter(s): Steven P. Riehle, Public Works Director

Background

The Certificate of Final Completion for Sanitary Sewer District 515 was approved on December 20, 2005 with January 24, 2006 set as the date for Council to sit as the Board of Equalization. All work has been completed and special assessments have been calculated for the District.

Discussion

The contract for Sanitary Sewer District 515 was awarded to The Diamond Engineering Co. of Grand Island, Nebraska on February 22, 2005. Work on the project was completed at a construction price of \$509,177.49. Total cost of the project, including engineering, was \$660,324.81. Costs for the project break down as follows:

Original Bid	\$ 512,633.30
Change Order	\$ 7,466.00
Underruns	(\$ 10,921.81)
Sub Total (Construction Price)	\$ 509,177.49
Engineering, Publication, TV Insp. Costs	\$ 55,526.12
#1 Navajo (Thornton Property)	\$ 75,000.00
Clean up of #1 Navajo (Bob Stahla Mobil Homes	\$ 4,936.09
Easements and Right-of-Way)	\$ 12,231.54
<u>Other Costs (Detailed on the Cert. of Final Completion)</u>	<u>\$ 3,453.57</u>
Total Project Cost	\$ 660,324.81

The estimated total for District 515 at the time of creation was \$774,935.00.

The total assessed amount is \$576,081.18. The assessments are calculated with half of the cost spread on a front foot basis with the remaining half of the cost spread on a per lot basis. See attached spreadsheet.

Alternatives

It appears that the Council has the following alternatives concerning the issue at hand. The Council may:

1. Make a motion approving a resolution to determine benefits and pass an ordinance levying the assessments.
2. Refer the issue to a Committee.
3. Postpone the issue to a future date.
4. Take no action on the issue.

Recommendation

City Administration recommends that the Council determine benefits and pass an ordinance to levy Special Assessments to individual properties.

Sample Motion

(Sample Motion for the Board of Equalization)

Move to approve the resolution establishing benefits for Sanitary Sewer District No. 515.

(Sample Motion for the Ordinance)

Move to approve the ordinance levying the assessments for Sanitary Sewer District No. 515.

Sanitary Sewer District No. 515-Final Assessments

<u>Owner & Address</u>	<u>Subdivision</u>	<u>Lot</u>	<u>Block</u>	12/2/2005		<u>Units/Lots</u>	Assessment	
				<u>Frontage(Ave.)</u>	<u>Per Front Foot</u>		<u>Per Lot</u>	<u>Total Assessment</u>
Gaylen Sprague 108 Arapahoe Ave.	Dale Roush Sub.	1	1	83.00	\$ 1,755.97	1	\$ 2,215.70	\$ 3,971.66
Gaylen Sprague 108 Arapahoe Ave.	Dale Roush Sub.	2	1	82.00	\$ 1,734.81	1	\$ 2,215.70	\$ 3,950.51
Todd Gallion 2535 Del Monte Ave	Dale Roush Sub.	3	1	82.00	\$ 1,734.81	1	\$ 2,215.70	\$ 3,950.51
Todd Gallion 2535 Del Monte Ave	Dale Roush Sub.	4	1	82.00	\$ 1,734.81	1	\$ 2,215.70	\$ 3,950.51
Bernardo & Norberta Trevino 120 Arapahoe Ave.	Dale Roush Sub.	5	1	82.00	\$ 1,734.81	1	\$ 2,215.70	\$ 3,950.51
Jack W. Rysavy 124 Arapahoe Ave.	Dale Roush Sub.	6	1	82.00	\$ 1,734.81	1	\$ 2,215.70	\$ 3,950.51
Helmuth E. & Carolyn R. Stahr-Trustees 215 E. 18th St.	Dale Roush Sub.	7	1	82.00	\$ 1,734.81	1	\$ 2,215.70	\$ 3,950.51
Lori Fye, L.M. & N. J. Bixenmann 134 Arapahoe Ave.	Dale Roush Sub.	8	1	82.00	\$ 1,734.81	1	\$ 2,215.70	\$ 3,950.51
Imogene Odom 102 Cherokee Ave.	Dale Roush Sub.	1	2	87.00	\$ 1,840.59	1	\$ 2,215.70	\$ 4,056.29
Connie Boltz 106 Cherokee Ave.	Dale Roush Sub.	2	2	85.00	\$ 1,798.28	1	\$ 2,215.70	\$ 4,013.98
Monadine L. Dubas 110 Cherokee Ave.	Dale Roush Sub.	3	2	85.00	\$ 1,798.28	1	\$ 2,215.70	\$ 4,013.98
Julene J. Kay 114 Cherokee Ave.	Dale Roush Sub.	4	2	85.00	\$ 1,798.28	1	\$ 2,215.70	\$ 4,013.98
Dallas M. & Betty J. Frohling 118 Cherokee Ave.	Dale Roush Sub.	5	2	85.00	\$ 1,798.28	1	\$ 2,215.70	\$ 4,013.98
Alfred H. & Dorothy M. Kincheloe 122 Cherokee Ave.	Dale Roush Sub.	6	2	85.00	\$ 1,798.28	1	\$ 2,215.70	\$ 4,013.98
Richard, Jr. & Carol Blackburn 126 Cherokee Ave.	Dale Roush Sub.	7	2	85.00	\$ 1,798.28	1	\$ 2,215.70	\$ 4,013.98
William J. & Judith Alvis 131 Arapahoe Ave.	Dale Roush Sub.	8	2	85.00	\$ 1,798.28	1	\$ 2,215.70	\$ 4,013.98
Lincoln C. & Rosa Wing 127 Arapahoe Ave.	Dale Roush Sub.	9	2	85.00	\$ 1,798.28	1	\$ 2,215.70	\$ 4,013.98
Randy Sobotka & Danika Gaston 123 Arapahoe Ave.	Dale Roush Sub.	10	2	85.00	\$ 1,798.28	1	\$ 2,215.70	\$ 4,013.98
Frederick M. Wheeler 119 Arapahoe Ave.	Dale Roush Sub.	11	2	85.00	\$ 1,798.28	1	\$ 2,215.70	\$ 4,013.98

Todd & Colleen Gallion 2535 Del Monte Ave C. Ray & Lorna Curry 1150 S. York, Denver Co 80210	Dale Roush Sub.	12	2	85.00	\$	1,798.28	1	\$	2,215.70	\$	4,013.98
Donald Dean & Velma J. Kiser 1617 N. Engleman Road School District No. 38 Box 4904, G. I. 68802-4904	Dale Roush Sub.	13	2	85.00	\$	1,798.28	1	\$	2,215.70	\$	4,013.98
School District No. 38 Box 4904, G. I. 68802-4904	Dale Roush Sub.	14	2	87.00	\$	1,840.59	1	\$	2,215.70	\$	4,056.29
William W. & Sharee L. Stahn 115 Cherokee Ave. Douglas D. Wales 121 Cherokee Ave. Dustin & Amanda Weekley 125 Cherokee Ave. Deborah Sue Tjaden 129 Cherokee Ave. Kenneth Edward Luschei 205 Cherokee Ave. Francisco & Angelina Domingo Miguel 215 Cherokee Ave. Francisco & Angelina Domingo Miguel 215 Cherokee Ave. William E. & Maria L. Slatter 223 Cherokee Ave. Jerome J. & Delores Kuta 227 Cherokee Ave. Merle E. & Cheryl D. Mendenhall 301 Cherokee Ave. Paul E. & Judy A. K. Hamilton 305 Cherokee Ave. Edwards C. & Lou Eva Brandt 311 Cherokee Ave. Gus Salpas 315 Cherokee Ave. Russell Larsen 321 Cherokee Ave. William R. & Michelle I. Sis 323 Cherokee Ave. George S. Beyersdorf	Dale Roush Second Sub.	1	1	165.00	\$	3,490.78	1	\$	2,215.70	\$	5,706.47
	Dale Roush Second Sub.	2	1	110.00	\$	2,327.19	1	\$	2,215.70	\$	4,542.88
	Dale Roush Second Sub.	3	1	110.00	\$	2,327.19	1	\$	2,215.70	\$	4,542.88
	Dale Roush Second Sub.	4	1	110.00	\$	2,327.19	1	\$	2,215.70	\$	4,542.88
	Dale Roush Second Sub.	5	1	110.00	\$	2,327.19	1	\$	2,215.70	\$	4,542.88
	Dale Roush Second Sub.	6	1	105.00	\$	2,221.40	1	\$	2,215.70	\$	4,437.10
	Dale Roush Second Sub.	7	1	105.00	\$	2,221.40	1	\$	2,215.70	\$	4,437.10
	Dale Roush Second Sub.	8	1	105.00	\$	2,221.40	1	\$	2,215.70	\$	4,437.10
	Dale Roush Second Sub.	9	1	105.00	\$	2,221.40	1	\$	2,215.70	\$	4,437.10
	Dale Roush Second Sub.	10	1	105.00	\$	2,221.40	1	\$	2,215.70	\$	4,437.10
	Dale Roush Second Sub.	11	1	105.00	\$	2,221.40	1	\$	2,215.70	\$	4,437.10
	Dale Roush Second Sub.	12	1	105.00	\$	2,221.40	1	\$	2,215.70	\$	4,437.10
	Dale Roush Second Sub.	13	1	105.00	\$	2,221.40	1	\$	2,215.70	\$	4,437.10
	Dale Roush Second Sub.	14	1	105.00	\$	2,221.40	1	\$	2,215.70	\$	4,437.10
	Dale Roush Second Sub.	15	1	105.00	\$	2,221.40	1	\$	2,215.70	\$	4,437.10
	Dale Roush Second Sub.	16	1	105.00	\$	2,221.40	1	\$	2,215.70	\$	4,437.10
	Dale Roush Second Sub.	17	1	105.00	\$	2,221.40	1	\$	2,215.70	\$	4,437.10
	Dale Roush Second Sub.	18	1	105.00	\$	2,221.40	1	\$	2,215.70	\$	4,437.10

Robert L. Lilienthal 324 Commanche Ave.	Dale Roush Second Sub.	39	1	127.00	\$	2,686.84	1	\$	2,215.70	\$	4,902.54
James D. & Bette J. McComb 316 Commanche Ave.	Dale Roush Second Sub.	40	1	127.00	\$	2,686.84	1	\$	2,215.70	\$	4,902.54
Terry G. & Rita E. Muir 312 Commanche Ave.	Dale Roush Second Sub.	41	1	127.00	\$	2,686.84	1	\$	2,215.70	\$	4,902.54
Albert & Dianne Benaivdz 302 Commanche Ave.	Dale Roush Second Sub.	42	1	127.00	\$	2,686.84	1	\$	2,215.70	\$	4,902.54
Michael F. & Roswitha Wieck 230 Commanche Ave.	Dale Roush Second Sub.	43	1	127.00	\$	2,686.84	1	\$	2,215.70	\$	4,902.54
Brian L. & Raejean L. Wieck 224 Commanche Ave.	Dale Roush Second Sub.	44	1	127.00	\$	2,686.84	1	\$	2,215.70	\$	4,902.54
Robert C. Evans 218 Commanche Ave.	Dale Roush Second Sub.	45	1	121.53	\$	2,571.12	1	\$	2,215.70	\$	4,786.81
Joel B. Shafer 66 Ponderosa	Dale Roush Second Sub.	46	1	120.00	\$	2,538.75	1	\$	2,215.70	\$	4,754.44
Paul Robert & Kristina Lynn Reimers 408 Dakota Dr.	Dale Roush Second Sub.	47	1	120.00	\$	2,538.75	1	\$	2,215.70	\$	4,754.44
Brian L. & Tammy Verba 208 Arapahoe Ave.	Dale Roush Second Sub.	48	1	120.00	\$	2,538.75	1	\$	2,215.70	\$	4,754.44
Roy K. Patterson 404 Cherokee Ave.	Dale Roush Second Sub.	1	2	82.00	\$	1,734.81	1	\$	2,215.70	\$	3,950.51
Leland D. & Barbara Jean Brunt 408 Cherokee Ave.	Dale Roush Second Sub.	2	2	82.00	\$	1,734.81	1	\$	2,215.70	\$	3,950.51
James R. & Laura G. Smith 412 Cherokee Ave.	Dale Roush Second Sub.	3	2	82.00	\$	1,734.81	1	\$	2,215.70	\$	3,950.51
Kent A. Schroeder- Trustee PO Box 1685, Kearney Ne. 68848	Dale Roush Second Sub.	4	2	82.00	\$	1,734.81	1	\$	2,215.70	\$	3,950.51
Edward D. & Carol A. Rawlings 420 Cherokee Ave.	Dale Roush Second Sub.	5	2	82.00	\$	1,734.81	1	\$	2,215.70	\$	3,950.51
Mark & Mary Warford 111 Arapahoe Ave.	Dale Roush Second Sub.	6	2	82.00	\$	1,734.81	1	\$	2,215.70	\$	3,950.51
Steven R. & Belinda K. Chrisp Wessels 429 Arapahoe Ave.	Dale Roush Second Sub.	7	2	82.00	\$	1,734.81	1	\$	2,215.70	\$	3,950.51
Loren & Delores Denning 425 Arapahoe Ave.	Dale Roush Second Sub.	8	2	82.00	\$	1,734.81	1	\$	2,215.70	\$	3,950.51
Terry I. & Mary Ann Westwood 419 Arapahoe Ave.	Dale Roush Second Sub.	9	2	82.00	\$	1,734.81	1	\$	2,215.70	\$	3,950.51
Myrtle A Schulz & Melody Bumgardner 415 Arapahoe Ave.	Dale Roush Second Sub.	10	2	82.00	\$	1,734.81	1	\$	2,215.70	\$	3,950.51
Jimmy Sleeper	Dale Roush Second Sub.	11	2	82.00	\$	1,734.81	1	\$	2,215.70	\$	3,950.51

Isadore A. & Phyllis L. Goc 229 Arapahoe Ave.	Dale Roush Second Sub.	8	4	82.00	\$	1,734.81	1	\$	2,215.70	\$	3,950.51
Berdena M., Duane & Scott Leitschuck 418 Arapahoe Ave.	Dale Roush Second Sub.	9	4	82.00	\$	1,734.81	1	\$	2,215.70	\$	3,950.51
Larry D. & Cindy L. Addison 221 Arapahoe Ave.	Dale Roush Second Sub.	10	4	82.00	\$	1,734.81	1	\$	2,215.70	\$	3,950.51
Richard J. & Susan M. Kowalski 217 Arapahoe Ave.	Dale Roush Second Sub.	11	4	82.00	\$	1,734.81	1	\$	2,215.70	\$	3,950.51
Arnold C. & Linda C. Wenn 2410 Overland Circle	Dale Roush Second Sub.	12	4	82.00	\$	1,734.81	1	\$	2,215.70	\$	3,950.51
William F. & Betty James 207 Arapahoe Ave.	Dale Roush Second Sub.	13	4	82.00	\$	1,734.81	1	\$	2,215.70	\$	3,950.51
William F. & Betty James 207 Arapahoe Ave.	Dale Roush Second Sub.	14	4	82.00	\$	1,734.81	1	\$	2,215.70	\$	3,950.51
Vermaine T. & Jeanie L. Verba 222 Arapahoe Ave.	Dale Roush Second Sub.	1	5	134.00	\$	2,834.93	1	\$	2,215.70	\$	5,050.63
Danny R. & Pamela S. Miller 226 Arapahoe	Dale Roush Second Sub.	2	5	134.00	\$	2,834.93	1	\$	2,215.70	\$	5,050.63
Duane L. & Gerald L. & Berdena M. Leitschuck 304 Arapahoe Ave.	Dale Roush Second Sub.	3	5	134.00	\$	2,834.93	1	\$	2,215.70	\$	5,050.63
Scott & Jackie D. Leitschuck 308 Arapahoe Ave.	Dale Roush Second Sub.	4	5	134.00	\$	2,834.93	1	\$	2,215.70	\$	5,050.63
Rodney & Barb Hammond 320 Arapahoe Ave.	Dale Roush Second Sub.	5	5	134.00	\$	2,834.93	1	\$	2,215.70	\$	5,050.63
Timothy D. & Catherine M. Bartlett 323 Commanche Ave.	Dale Roush Second Sub.	6	5	134.00	\$	2,834.93	1	\$	2,215.70	\$	5,050.63
Carl E., Jr. & Linda Fricke 311 Commanche Ave.	Dale Roush Second Sub.	7	5	134.00	\$	2,834.93	1	\$	2,215.70	\$	5,050.63
Jessie M. Campbell 305 Commanche Ave.	Dale Roush Second Sub.	8	5	134.00	\$	2,834.93	1	\$	2,215.70	\$	5,050.63
Paul W. Wengler 231 Commanche Ave.	Dale Roush Second Sub.	9	5	134.00	\$	2,834.93	1	\$	2,215.70	\$	5,050.63
Ronald A. & Susan E. Rustman 223 Commanche Ave.	Dale Roush Second Sub.	10	5	134.00	\$	2,834.93	1	\$	2,215.70	\$	5,050.63
Timothy E. Koehn 402 Arapahoe Ave.	Dale Roush Second Sub.	1	6	134.00	\$	2,834.93	1	\$	2,215.70	\$	5,050.63
John R. & Kristine Lyn Barrett Blue 410 Arapahoe Ave.	Dale Roush Second Sub.	2	6	134.00	\$	2,834.93	1	\$	2,215.70	\$	5,050.63
Berdena Woodward Leitschuck 418 Arapahoe Ave.	Dale Roush Second Sub.	3	6	134.00	\$	2,834.93	1	\$	2,215.70	\$	5,050.63
Etta R. & James W. Vetter	Dale Roush Second Sub.	4	6	134.00	\$	2,834.93	1	\$	2,215.70	\$	5,050.63

426 Arapahoe Ave. Cynthia L. McCarthy 430 Arapahoe Ave.	Dale Roush Second Sub.	5	6	134.00	\$ 2,834.93	1	\$ 2,215.70	\$ 5,050.63
James G. & Ila M. Dramse 435 Commanche Ave.	Dale Roush Second Sub.	6	6	134.00	\$ 2,834.93	1	\$ 2,215.70	\$ 5,050.63
Jeanette & Terry Wampole 427 Commanche Ave.	Dale Roush Second Sub.	7	6	134.00	\$ 2,834.93	1	\$ 2,215.70	\$ 5,050.63
Jorge R. & Mayra Q. Romo 421 Commanche Ave.	Dale Roush Second Sub.	8	6	134.00	\$ 2,834.93	1	\$ 2,215.70	\$ 5,050.63
Clyde C. & Charlotte A. Kratt 403 Commanche Ave.	Dale Roush Second Sub.	9	6	134.00	\$ 2,834.93	1	\$ 2,215.70	\$ 5,050.63
Patricia A. Skinner PO Box 224, Phillips, Ne. 68865-0224	Dale Roush Second Sub.	10	6	134.00	\$ 2,834.93	1	\$ 2,215.70	\$ 5,050.63
Earle R. & Laura E. Kleeb 212 Commanche Ave.	Pt. Of SE 1/4 SW 1/4 Sec. 14-11-10			205.67	\$ 4,351.20	1	\$ 2,215.70	\$ 6,566.90
Commencing at the SW corner of th SE1/4SW1/4 of said section14; thence N00Deg56'00"E, along the west line of SE1/4SW1/4 of said section, a dist. of 409' to the point of beginning; thence continuing north along said west line of section 14, a dist. Of 491.0'; thence S89Deg12'E, a dist. Of 137.0'; thence S15Deg45'E, a dist. Of 479.9'; thence south a dist. Of 28.0'; thence N89Deg11'30"W, a dist. Of 274.34' to the point of beginning.								
Lee J. & Sherry A. Newport 4250 W. Old Potash Hwy.	Pt. Of SE 1/4 SW 1/4 Sec. 14-11-10			277.67	\$ 5,874.45	1	\$ 2,215.70	\$ 8,090.15
Beginning at the SW corner of SE1/4SW1/4 of said section 14; thence N0Deg56'E along the west line of said SE1/4SW1/4, a dist. Of 409.0'; thence S89Deg11'30"E, ad dist. Of 274.34'; thence due south a dist. Of 409.0' to the south line of the SE1/4SW1/4 of said section14; thence N89Deg12'W a dist. Of 281.0' to the point of beginning.								

13,614.93 \$ 288,040.59 130 \$ 288,040.59 \$ 576,081.18

!!! Note- Adjust the last assessment from \$8,090.15 to \$8,090.05 to match the Total. !!!

Total Amt. Assessable =	\$ 576,081.18	
Amt. Assessable by frontage	\$ 288,040.59	
Total frontage	13,614.93	
Cost/Frontage foot	\$21.15622996	
Amt. Assessable by Unit/Lot	\$ 288,040.59	
No. of Units/Lots	130	
Cost per Unit/Lot	\$ 2,215.70	

WESTWOOD
PARK FOURTH
SUB.

WESTWOOD
PARK SIXTH
SUB.

REDWOOD
ROAD

FAIDLEY AVENUE

PART S.E. 1/4,
N.W. 1/4
SECTION 14-11-10

PART N.W. 1/4,
S.E. 1/4
SECTION 14-11-10

PART S.W. 1/4,
S.E. 1/4
SECTION 14-11-10

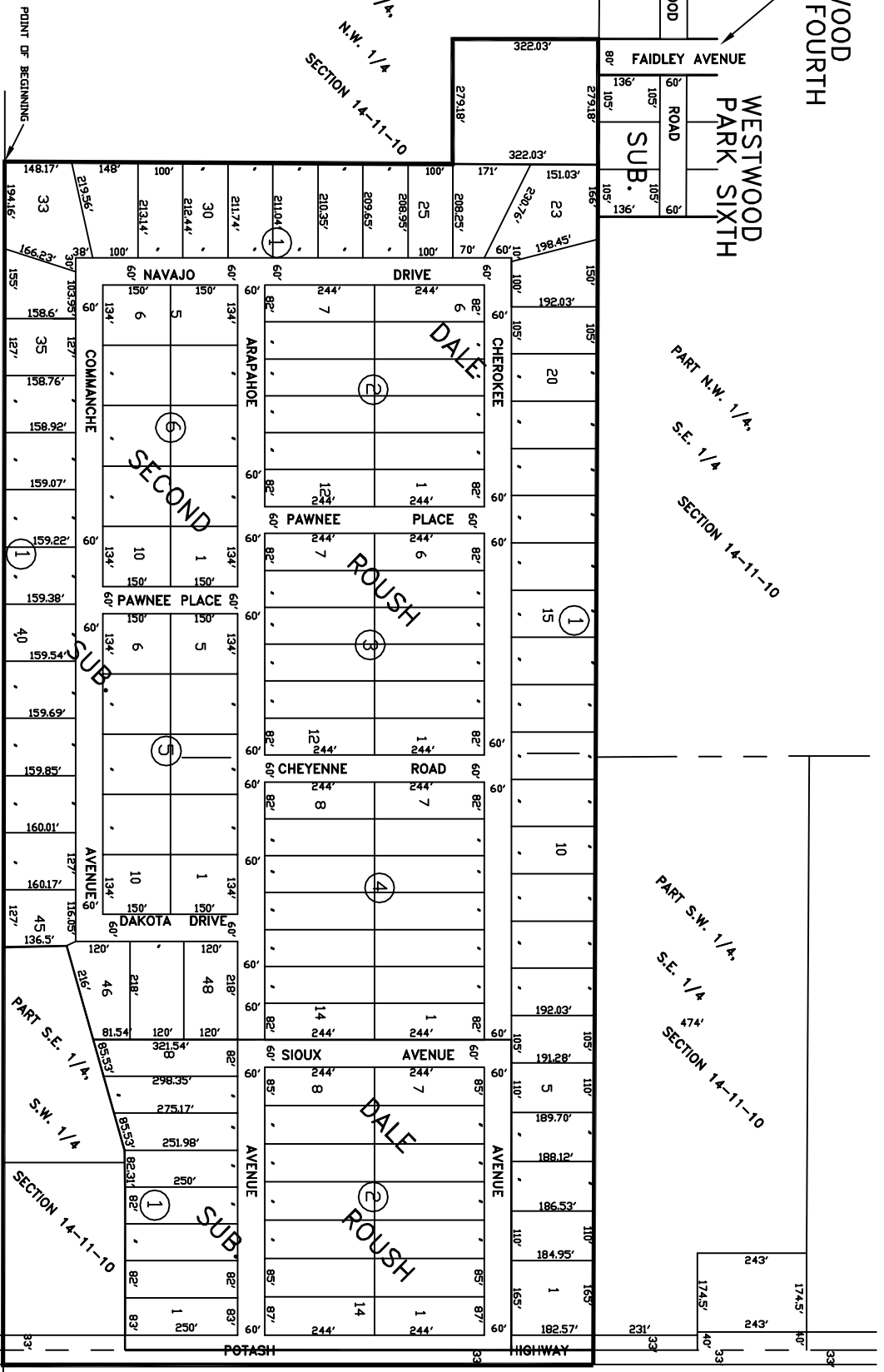


EXHIBIT "A"



SANITARY SEWER DISTRICT 515

City of Kansas
Public Works Department

PLAT TO ACCOMPANY ORDINANCE
NO. 8896

SCALE 1" = 200' L.D.C. 4/5/04

R E S O L U T I O N 2006-BE-1

BE IT RESOLVED BY THE MAYOR AND COUNCIL OF THE CITY OF GRAND ISLAND, NEBRASKA, sitting as a Board of Equalization for Sanitary Sewer District 515, after due notice having been given thereof, that we find and adjudge:

That the benefits accruing to the real estate in such district to be the total sum of \$576,081.18; and

Such benefits are equal and uniform; and

According to the equivalent frontage of the respective lots, tracts, and real estate within such Sanitary Sewer District No. 515, such benefits are the sums set opposite the several descriptions as follows:

<u>Name</u>	<u>Description</u>	<u>Assessment</u>
Gaylen Sprague	Lot 1, Block 1, Dale Roush Subdivision	3,971.66
Gaylen Sprague	Lot 2, Block 1, Dale Roush Subdivision	3,950.51
Todd Gallion	Lot 3, Block 1, Dale Roush Subdivision	3,950.51
Todd Gallion	Lot 4, Block 1, Dale Roush Subdivision	3,950.51
Bernardo & Norberta Trevino	Lot 5, Block 1, Dale Roush Subdivision	3,950.51
Jack W. Rysavy	Lot 6, Block 1, Dale Roush Subdivision	3,950.51
Helmuth E. & Carolyn R. Stahr, Trustees	Lot 7, Block 1, Dale Roush Subdivision	3,950.51
Lori Fye, L.M. & N.J. Bixenmann	Lot 8, Block 1, Dale Roush Subdivision	3,950.51
Imogene Odom	Lot 1, Block 2, Dale Roush Subdivision	4,056.29
Connie Boltz	Lot 2, Block 2, Dale Roush Subdivision	4,013.98
Monadine L. Dubas	Lot 3, Block 2, Dale Roush Subdivision	4,013.98
Julene J. Kay	Lot 4, Block 2, Dale Roush Subdivision	4,013.98
Dallas M. & Betty J. Frohling	Lot 5, Block 2, Dale Roush Subdivision	4,013.98
Alfred H. & Dorothy M. Kincheloe	Lot 6, Block 2, Dale Roush Subdivision	4,013.98
Richard, Jr. & Carol Blackburn	Lot 7, Block 2, Dale Roush Subdivision	4,013.98
William J. & Judith Alvis	Lot 8, Block 2, Dale Roush Subdivision	4,013.98
Lincoln C. & Rosa Wing	Lot 9, Block 2, Dale Roush Subdivision	4,013.98
Randy Sobotka & Danika Gaston	Lot 10, Block 2, Dale Roush Subdivision	4,013.98
Frederick M. Wheeler	Lot 11, Block 2, Dale Roush Subdivision	4,013.98
Todd & Colleen Gallion	Lot 12, Block 2, Dale Roush Subdivision	4,013.98
C. Ray & Lorna Curry	Lot 13, Block 2, Dale Roush Subdivision	4,013.98

RESOLUTION 2006-BE-1

Donald Dean & Velma J. Kiser	Lot 14, Block 2, Dale Roush Subdivision	4,056.29
School District No. 38	Lot 1, Block 1, Dale Roush Second Subdivision	5,706.47
School District No. 38	Lot 2, Block 1, Dale Roush Second Subdivision	4,542.88
William W. & Sharee L. Stahn	Lot 3, Block 1, Dale Roush Second Subdivision	4,542.88
Douglas D. Wales	Lot 4, Block 1, Dale Roush Second Subdivision	4,542.88
Dustin & Amanda Weekley	Lot 5, Block 1, Dale Roush Second Subdivision	4,542.88
Deborah Sue Tjaden	Lot 6, Block 1, Dale Roush Second Subdivision	4,437.10
Kenneth Edward Luschei	Lot 7, Block 1, Dale Roush Second Subdivision	4,437.10
Francisco & Angelina Domingo Miguel	Lot 8, Block 1, Dale Roush Second Subdivision	4,437.10
Francisco & Angelina Domingo Miguel	Lot 9, Block 1, Dale Roush Second Subdivision	4,437.10
William E. & Marla L. Slatter	Lot 10, Block 1, Dale Roush Second Subdivision	4,437.10
Jerome J. & Delores Kuta	Lot 11, Block 1, Dale Roush Second Subdivision	4,437.10
Merle E. & Cheryl D. Mendenhall	Lot 12, Block 1, Dale Roush Second Subdivision	4,437.10
Paul E. & Judy A.K. Hamilton	Lot 13, Block 1, Dale Roush Second Subdivision	4,437.10
Edward C. & Lou Eva Brandt	Lot 14, Block 1, Dale Roush Second Subdivision	4,437.10
Gus Salpas	Lot 15, Block 1, Dale Roush Second Subdivision	4,437.10
Russell Larsen	Lot 16, Block 1, Dale Roush Second Subdivision	4,437.10
William R. & Michelle I. Sis	Lot 17, Block 1, Dale Roush Second Subdivision	4,437.10
George S. Beyersdorf	Lot 18, Block 1, Dale Roush Second Subdivision	4,437.10
Larry D. & Kathleen A. Ogden	Lot 19, Block 1, Dale Roush Second Subdivision	4,437.10
Floyd A. & Della E. Treffer	Lot 20, Block 1, Dale Roush Second Subdivision	4,437.10
Larry J. & Laurie A. VanMark	Lot 21, Block 1, Dale Roush Second Subdivision	4,437.10
Alfred & Joy Kuszak	Lot 22, Block 1, Dale Roush Second Subdivision	4,860.23
James E. & Pauline L. Thornton	Lot 23, Block 1, Dale Roush Second Subdivision	4,712.13
City of Grand Island	Lot 24, Block 1, Dale Roush Second Subdivision	4,765.02
Todd Pearson	Lot 25, Block 1, Dale Roush Second Subdivision	4,331.32
Ralph E. & Linda L. Cure	Lot 26, Block 1, Dale Roush Second Subdivision	4,331.32
Mikel D. & Penny Wagner	Lot 27, Block 1, Dale Roush Second Subdivision	4,331.32
John Wenzel	Lot 28, Block 1, Dale Roush Second Subdivision	4,331.32
Jerry L. Draves	Lot 29, Block 1, Dale Roush Second Subdivision	4,331.32
Bob Stahla Mobile Home Services Inc.	Lot 30, Block 1, Dale Roush Second Subdivision	4,331.32
Frances M. Bartunek	Lot 31, Block 1, Dale Roush Second Subdivision	4,331.32
Francis V. & Sally Mae Hawkins	Lot 32, Block 1, Dale Roush Second Subdivision	4,839.07
Gale & Donna Kuhlmann	Lot 33, Block 1, Dale Roush Second Subdivision	4,988.86
Steven E. & Marilyn L. Arnold	Lot 34, Block 1, Dale Roush Second Subdivision	4,955.01

RESOLUTION 2006-BE-1

Terry G. & Rita E. Muir	Lot 35, Block 1, Dale Roush Second Subdivision	4,902.54
Kevin E. & Michelle L. Salpas	Lot 36, Block 1, Dale Roush Second Subdivision	4,902.54
Kenneth A. & Bonnie J. Smaha	Lot 37, Block 1, Dale Roush Second Subdivision	4,902.54
Barbara M. Rozmiarek	Lot 38, Block 1, Dale Roush Second Subdivision	4,902.54
Robert L. Lilienthal	Lot 39, Block 1, Dale Roush Second Subdivision	4,902.54
James D. & Bette J. McComb	Lot 40, Block 1, Dale Roush Second Subdivision	4,902.54
Terry G. & Rita E. Muir	Lot 41, Block 1, Dale Roush Second Subdivision	4,902.54
Albert & Dianne Benaivdz	Lot 42, Block 1, Dale Roush Second Subdivision	4,902.54
Michael F. & Roswitha Wieck	Lot 43, Block 1, Dale Roush Second Subdivision	4,902.54
Brian L. & Raejean L. Wieck	Lot 44, Block 1, Dale Roush Second Subdivision	4,902.54
Robert C. Evans	Lot 45, Block 1, Dale Roush Second Subdivision	4,786.81
Joel B. Shafer	Lot 46, Block 1, Dale Roush Second Subdivision	4,754.44
Paul Robert & Kristina Lynn Reimers	Lot 47, Block 1, Dale Roush Second Subdivision	4,754.44
Brian L. & Tammy Verba	Lot 48, Block 1, Dale Roush Second Subdivision	4,754.44
Roy K. Patterson	Lot 1, Block 2, Dale Roush Second Subdivision	3,950.51
Leland D. & Barbara Jean Brunt	Lot 2, Block 2, Dale Roush Second Subdivision	3,950.51
James R. & Laura G. Smith	Lot 3, Block 2, Dale Roush Second Subdivision	3,950.51
Kent A. Schroeder, Trustee	Lot 4, Block 2, Dale Roush Second Subdivision	3,950.51
Edward D. & Carol A. Rawlings	Lot 5, Block 2, Dale Roush Second Subdivision	3,950.51
Mark & Mary Warford	Lot 6, Block 2, Dale Roush Second Subdivision	3,950.51
Steven R. & Belinda K. Chrisp Wessels	Lot 7, Block 2, Dale Roush Second Subdivision	3,950.51
Loren & Delores Denning	Lot 8, Block 2, Dale Roush Second Subdivision	3,950.51
Terry I. & Mary Ann Westwood	Lot 9, Block 2, Dale Roush Second Subdivision	3,950.51
Myrtle A. Schulz & Melody Bumgardner	Lot 10, Block 2, Dale Roush Second Subdivision	3,950.51
Jimmy Sleeper	Lot 11, Block 2, Dale Roush Second Subdivision	3,950.51
Gary W. Schwieger	Lot 12, Block 2, Dale Roush Second Subdivision	3,950.51
Loren R. & Delores D. Denning	Lot 1, Block 3, Dale Roush Second Subdivision	3,950.51
Dennis J. & Lois L. Beran	Lot 2, Block 3, Dale Roush Second Subdivision	3,950.51
Miguel & Andrea N. Rodriguez	Lot 3, Block 3, Dale Roush Second Subdivision	3,950.51
Wade P. & Jennifer R. Sorensen	Lot 4, Block 3, Dale Roush Second Subdivision	3,950.51
Terry L. & Melissa R. Stamm	Lot 5, Block 3, Dale Roush Second Subdivision	3,950.51
John W. Lanzendorf	Lot 6, Block 3, Dale Roush Second Subdivision	3,950.51
Gary W. Schwieger	Lot 7, Block 3, Dale Roush Second Subdivision	3,950.51
Cindy A. Schaffer (Brown)	Lot 8, Block 3, Dale Roush Second Subdivision	3,950.51
Douglas W. & Arlene J. Brockman	Lot 9, Block 3, Dale Roush Second Subdivision	3,950.51

RESOLUTION 2006-BE-1

Monte R. & Jodi A. Knapp	Lot 10, Block 3, Dale Roush Second Subdivision	3,950.51
Arnold C. & Linda C. Wenn	Lot 11, Block 3, Dale Roush Second Subdivision	3,950.51
Paul L. & Helen F. Wheeler	Lot 12, Block 3, Dale Roush Second Subdivision	3,950.51
James J. & Janet Rae Kuta	Lot 1, Block 4, Dale Roush Second Subdivision	3,950.51
Janice M. & Sam Ortega	Lot 2, Block 4, Dale Roush Second Subdivision	3,950.51
Elaine A. Rauch	Lot 3, Block 4, Dale Roush Second Subdivision	3,950.51
Roy L. & Lucinda S. Bethune	Lot 4, Block 4, Dale Roush Second Subdivision	3,950.51
Barton C. Bennetzen	Lot 5, Block 4, Dale Roush Second Subdivision	3,950.51
Nis N. Jr. & Sharon K. Bennetzen	Lot 6, Block 4, Dale Roush Second Subdivision	3,950.51
Allen D. & Nancy L. Petzoldt	Lot 7, Block 4, Dale Roush Second Subdivision	3,950.51
Isadore A. & Phyllis L. Goc	Lot 8, Block 4, Dale Roush Second Subdivision	3,950.51
Berdena M., Duane & Scott Leitschuck	Lot 9, Block 4, Dale Roush Second Subdivision	3,950.51
Larry D. & Cindy L. Addison	Lot 10, Block 4, Dale Roush Second Subdivision	3,950.51
Richard J. & Susan M. Kowalski	Lot 11, Block 4, Dale Roush Second Subdivision	3,950.51
Arnold C. & Linda C. Wenn	Lot 12, Block 4, Dale Roush Second Subdivision	3,950.51
William F. & Betty James	Lot 13, Block 4, Dale Roush Second Subdivision	3,950.51
William F. & Betty James	Lot 14, Block 4, Dale Roush Second Subdivision	3,950.51
Vermaine T. & Jeanie L. Verba	Lot 1, Block 5, Dale Roush Second Subdivision	5,050.63
Danny R. & Pamela S. Miller	Lot 2, Block 5, Dale Roush Second Subdivision	5,050.63
Duane L. & Gerald L. & Berdena M. Leitschuck	Lot 3, Block 5, Dale Roush Second Subdivision	5,050.63
Scott & Jackie D. Leitschuck	Lot 4, Block 5, Dale Roush Second Subdivision	5,050.63
Rodney & Barb Hammond	Lot 5, Block 5, Dale Roush Second Subdivision	5,050.63
Timothy D. & Catherine M. Bartlett	Lot 6, Block 5, Dale Roush Second Subdivision	5,050.63
Carl E. Jr. & Linda Fricke	Lot 7, Block 5, Dale Roush Second Subdivision	5,050.63
Jessie M. Campbell	Lot 8, Block 5, Dale Roush Second Subdivision	5,050.63
Paul W. Wengler	Lot 9, Block 5, Dale Roush Second Subdivision	5,050.63
Ronald A. & Susan E. Rustman	Lot 10, Block 5, Dale Roush Second Subdivision	5,050.63
Timothy E. Koehn	Lot 1, Block 6, Dale Roush Second Subdivision	5,050.63
John R. & Kristine Lyn Barrett Blue	Lot 2, Block 6, Dale Roush Second Subdivision	5,050.63
Berdena Woodward Leitschuck	Lot 3, Block 6, Dale Roush Second Subdivision	5,050.63
Etta R. & James W. Vetter	Lot 4, Block 6, Dale Roush Second Subdivision	5,050.63
Cynthia L. McCarthy	Lot 5, Block 6, Dale Roush Second Subdivision	5,050.63
James G. & Ila M. Dramse	Lot 6, Block 6, Dale Roush Second Subdivision	5,050.63
Jeanette & Terry Wampole	Lot 7, Block 6, Dale Roush Second Subdivision	5,050.63

RESOLUTION 2006-BE-1

Jorge R. & Mayra Q. Romo	Lot 8, Block 6, Dale Roush Second Subdivision	5,050.63
Clyde C. & Charlotte A. Kraft	Lot 9, Block 6, Dale Roush Second Subdivision	5,050.63
Patricia A. Skinner	Lot 10, Block 6, Dale Roush Second Subdivision	5,050.63
Earle R. & Laura E. Kleeb	Part of the SE1/4, SW1/4 of Section 14-11-10, more particularly described as follows: Commencing at the SW corner of the SE1/4, SW1/4 of said Section 14; thence N00°56'00"E, along the west line of SE1/4, SW1/4 of said section, a distance of 409 feet to the point of beginning; thence continuing north along said west line of Section 14, a distance of 491.0 feet; thence S89°12'E, a distance of 137.0 feet; thence S15°45'E, a distance of 479.9 feet; thence south a distance of 28.0 feet; thence N89°11'30"W, a distance of 274.34 feet to the point of beginning.	6,566.90
Lee J. & Sherry A. Newport	Part of the SE1/4, SW1/4 of Section 14-11-10; more particularly described as follows: Beginning at the SW corner of SE1/4, SW1/4 of said Section 14; thence N0°56'E along the west line of said SE1/4, SW1/4, a distance of 409.0 feet; thence S89°11'30"E, a distance of 274.34 feet; thence due south a distance of 409.0 feet to the south line of the SE1/4, SW1/4 of said Section 14; thence N89°12'W a distance of 281.0 feet to the point of beginning.	8,090.05
TOTAL		\$576,081.18

Adopted by the City Council of the City of Grand Island, Nebraska, on January 24, 2006.

Jay Vavricek, Mayor

Attest:

RaNae Edwards, City Clerk