



# **City of Grand Island**

**Tuesday, December 06, 2005**

**Council Session**

## **Item E3**

**Public Hearing Concerning Acquisition of Utility Easements -  
Hwy. 34 & Locust Streets - Wal-Mart South**

**Staff Contact: Gary R. Mader**

# **Council Agenda Memo**

**From:** Robert H. Smith, Asst. Utilities Director

**Meeting:** December 6, 2005

**Subject:** Acquisition of Utility Easement – Along the West Parking lot of Wal-Mart South – U.S. Hwy. 34 and Locust Street – Wal-Mart Real Estate Business Trust & Wal-Mart Stores, Inc.

**Item #'s:** E-3 & G-8

**Presenter(s):** Gary R. Mader, Utilities Director

## **Background**

Nebraska State Law requires that acquisition of property must be approved by City Council. The Utilities Department needs to acquire two easements relative to the property of Wal-Mart Real Estate Business Trust and Wal-Mart Stores, Inc., located along the west parking lot of Wal-Mart South at U.S. Hwy. 34 and Locust Streets, in the City Of Grand Island, Hall County, in order to have access to install, upgrade, maintain, and repair power appurtenances, including lines and transformers.

## **Discussion**

These easements will be used to place electrical cable and a pad-mounted transformer to provide service to a new fueling station.

## **Alternatives**

It appears that the Council has the following alternatives concerning the issue at hand. The Council may:

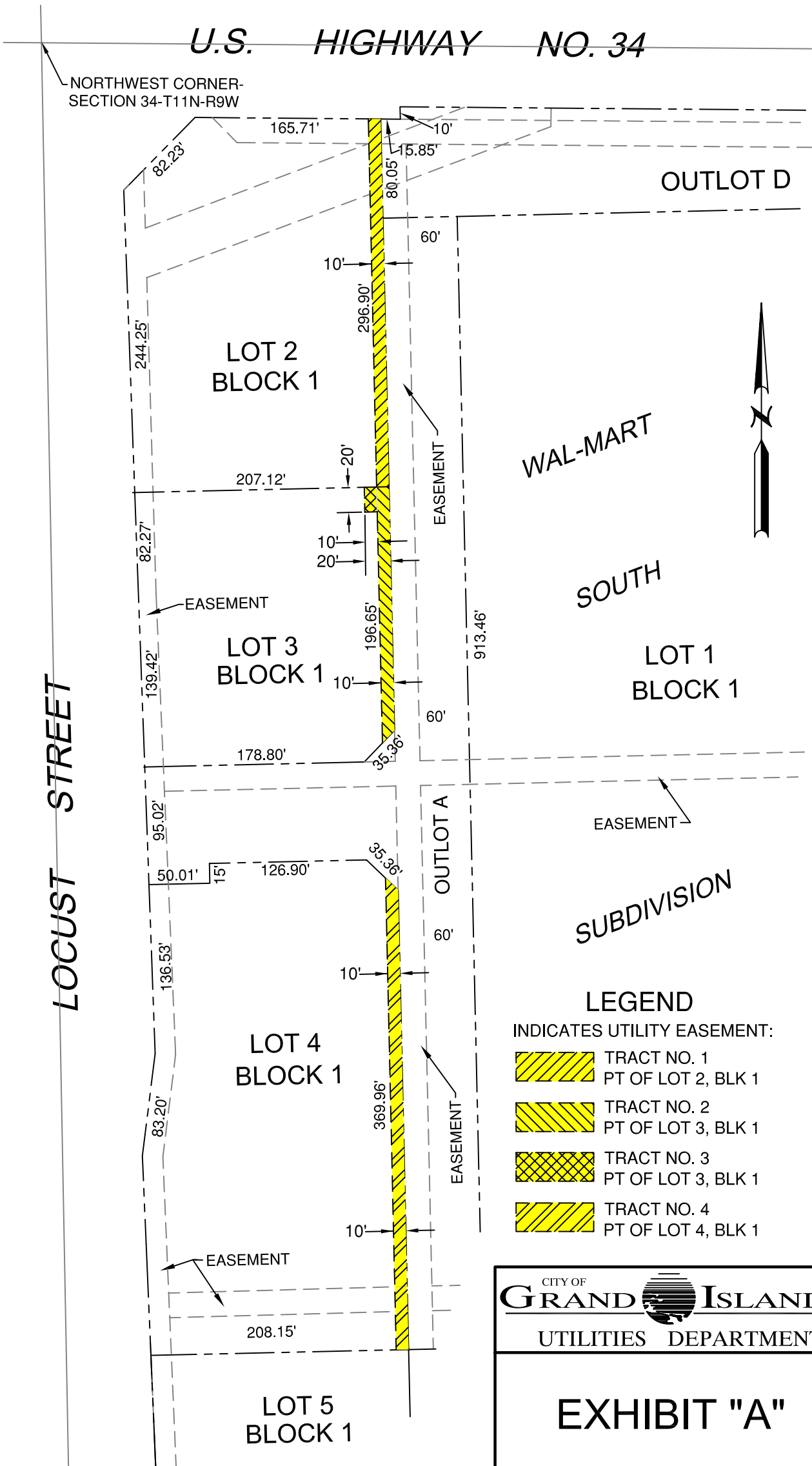
1. Make a motion to approve
2. Refer the issue to a Committee
3. Postpone the issue to future date
4. Take no action on the issue

## **Recommendation**

City Administration recommends that the Council approve the resolution for the acquisition of both easements for one dollar (\$1.00) each.

## **Sample Motion**

Motion to approve acquisition of the Utility Easements.







WAL-MART

SOUTH

SUBDIVISION

LEGEND

INDICATES UTILITY EASEMENT:

-  TRACT NO. 1  
PT OF LOT 2, BLK 1
-  TRACT NO. 2  
PT OF LOT 3, BLK 1
-  TRACT NO. 3  
PT OF LOT 3, BLK 1
-  TRACT NO. 4  
PT OF LOT 4, BLK 1

CITY OF

GRAND ISLAND

UTILITIES DEPARTMENT

EXHIBIT "A"

DRN BY: K.J.M.	SCALE: 1"= 100'
DATE: 11/14/2005	FILE: WALMART

U.S. HIGHWAY NO. 34

NORTHWEST CORNER-  
SECTION 34-T11N-R9W

LOCUST STREET

OUTLOT "D"

LOT 2  
BLOCK 1

LOT 1  
BLOCK 1

WAL-MART

NORTHEAST CORNER-  
LOT 3, BLOCK 1,  
WAL-MART SOUTH SUB.

SOUTH

SUBDIVISION

EASEMENT

LOT 3  
BLOCK 1

POINT OF BEGINNING

EASEMENT

OUTLOT "A"

NORTHEAST CORNER  
LOT 4, BLOCK 1  
WAL-MART SOUTH SUB.

LOT 4  
BLOCK 1

LEGEND



INDICATES 10' WIDE  
UTILITY EASEMENT

CITY OF  
**GRAND ISLAND**  
UTILITIES DEPARTMENT

EXHIBIT "A"

DRN BY: K.J.M.

SCALE: 1"= 100'

DATE: 11/14/2005

FILE: WALMART