



City of Grand Island

Tuesday, November 08, 2005

Council Session

Item E4

**Public Hearing on Acquisition of Public Utility Easement Located
at 2836 & 2838 Cross Pointe Drive; Lot 11 North Pointe
Subdivision (The Meadows Apartment Homes LLC)**

Staff Contact: Steven P. Riehle, Public Works Director

Council Agenda Memo

From: Steven P. Riehle, Public Works Director

Meeting: November 8, 2005

Subject: Public Hearing Concerning Acquisition of a Public Utilities Easement Located Along 2836 & 2838 Cross Pointe Drive; Lot 11 North Pointe Subdivision (The Meadows Apartment Homes LLC)

Item #'s: E-4 & G-7

Presenter(s): Steven P. Riehle, Public Works Director

Background

Council action is necessary for the City of Grand Island to acquire public easements. The Public Works Department needs to acquire an easement along the property of 2836 and 2838 Cross Pointe Drive (Lot 11 of North Pointe Subdivision) to extend private sanitary sewer service to an adjacent property.

Discussion

This easement will be used in order to have access to install, upgrade, maintain, and repair public utilities including but not limited to sanitary sewers, storm sewers, water mains, electric utility poles, overhead and underground power lines, manholes, pipelines, surface markers, and other appurtenances, upon, over, along, in, underneath and through the tract of land.

Alternatives

It appears that the Council has the following alternatives concerning the issue at hand. The Council may:

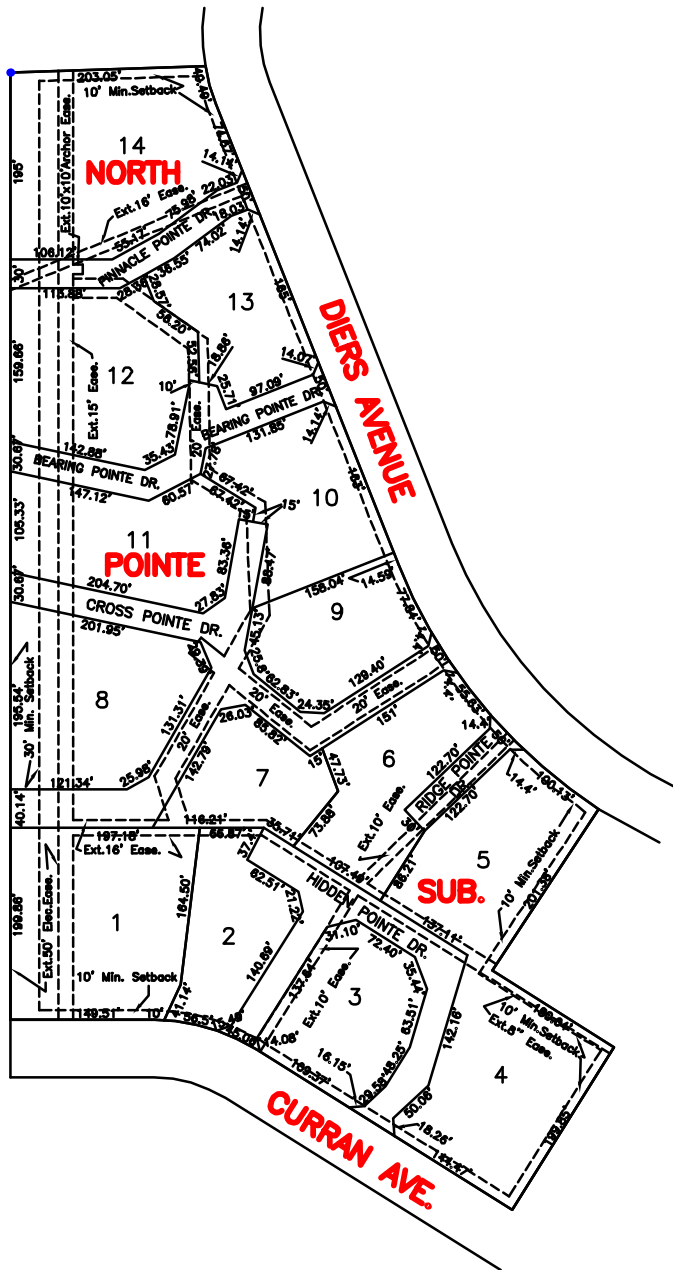
1. Move to approve the acquisition of the Public Utility Easement.
2. Refer the issue to a Committee.
3. Postpone the issue to a future date.
4. Take no action on the issue.

Recommendation

City Administration recommends that the Council conduct a Public Hearing and approve acquisition of the Public Utility Easement.

Sample Motion

Move to approve the acquisition of the Public Utility Easement.



CITY OF
GRAND ISLAND
 PUBLIC WORKS DEPARTMENT

DATE: 11/3/05
 DRN BY: L.D.C.
 SCALE: NONE

PLAT ACCOMPANY EASEMENT
 IN LOT 11 NORTH POINTE
 SUB.