



# City of Grand Island

Tuesday, November 08, 2005

Council Session

## Item E2

**Public Hearing on Acquisition of Public Utility Easement Located  
at 4250 Old Potash Highway (Lee J. and Sherry A. Newport)**

Staff Contact: Steven P. Riehle, Public Works Director

# **Council Agenda Memo**

**From:** Steven P. Riehle, Public Works Director

**Meeting:** November 8, 2005

**Subject:** Public Hearing and Approval for Acquisition of a Public Utilities Easement Located at 4250 Old Potash HWY (Lee J. and Sherry A. Newport)

**Item #'s:** E-2 & G-5

**Presenter(s):** Steven P. Riehle, Public Works Director

## **Background**

Council action is necessary for the City of Grand Island to acquire public easements. The Public Works Department needs to acquire an easement along the property of 4250 Old Potash Highway.

## **Discussion**

This easement is needed to construct public Sanitary Sewer in this area.

## **Alternatives**

It appears that the Council has the following alternatives concerning the issue at hand. The Council may:

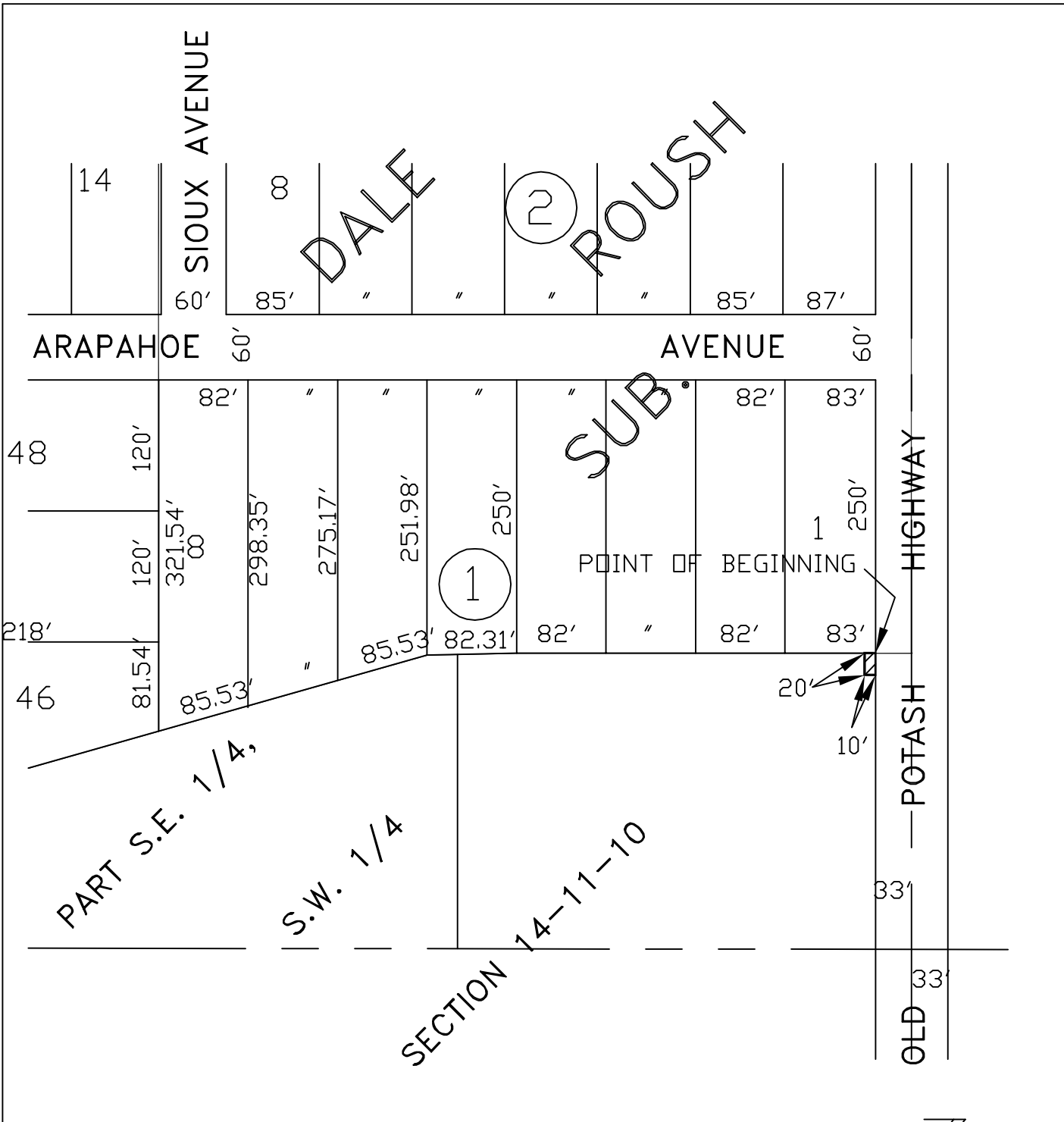
1. Move to approve the acquisition of the Public Utility Easement.
2. Refer the issue to a committee.
3. Postpone the issue to a future date.
4. Take no action on the issue.

## **Recommendation**

City Administration recommends that the Council conduct a Public Hearing and approve acquisition of the Public Utility Easement.

## **Sample Motion**

Move to approve the acquisition of the Public Utility Easement.



DALE ROUSH

SUB



AREA TO BE ACQUIRED FROM  
LEE J. & SHERRY A. NEWPORT



EXHIBIT "A"

**CITY OF GRAND ISLAND**  
PUBLIC WORKS DEPARTMENT

DATE: 10/3/05  
DRN BY: L.D.C.  
SCALE: NONE

PLAT TO ACCOMPANY  
EASEMENT