



# City of Grand Island

Tuesday, September 27, 2005

Council Session

## Item G17

**#2005-276 - Approving Amendment No. 3 to the Agreement with Olsson Associates for Consulting Engineering Services on the Westridge Detention Cell**

Staff Contact: Steven P. Riehle, City Engineer/Public Works Direc

# **Council Agenda Memo**

**From:** Steven P. Riehle, Public Works Director

**Meeting:** September 27, 2005

**Subject:** Approving Amendment No. 3 to the Agreement with Olsson Associates for Consulting Engineering Services on the Westridge Detention Cell

**Item #'s:** G-17

**Presenter(s):** Steven P. Riehle, Public Works Director

## **Background**

Any amendments to the agreement must be approved by the City Council. An agreement with Olsson Associates was approved by the City Council on October 23, 2001. The agreement was for performing design services related to the construction of the Westridge Detention Cell and the extension of Independence Avenue from Manchester Avenue down to 13<sup>th</sup> Street.

## **Discussion**

The Westridge Detention Cell was excavated by the contractor for the developer of the Grand West Subdivisions. Street Improvement District No. 1255 will pave Independence Avenue between 13<sup>th</sup> Street and Shanna Street as well as the unpaved sections of Shanna Street. The completion of District 1255 will help traffic flow in the neighborhood by improving the inter-connectivity of the streets. The project to pave Independence Avenue between Shanna Street and Manchester Avenue (behind Westridge Middle School) is currently planned for the 2007 fiscal year. The cell is currently scheduled for improvements as part of the 2007 project.

The planning and design of improvements to the cell needs to proceed. This will ensure the detention cell will be a neighborly friendly cell with improvements such as drainage channel improvements, sprinkler system, landscaping, etc.

An amendment to the agreement based on actual costs with a maximum dollar amount of \$36,520 was negotiated with Olsson Associates to perform design engineering and construction observation work on the detention cell.

## **Alternatives**

It appears that the Council has the following alternatives concerning the issue at hand.  
The Council may:

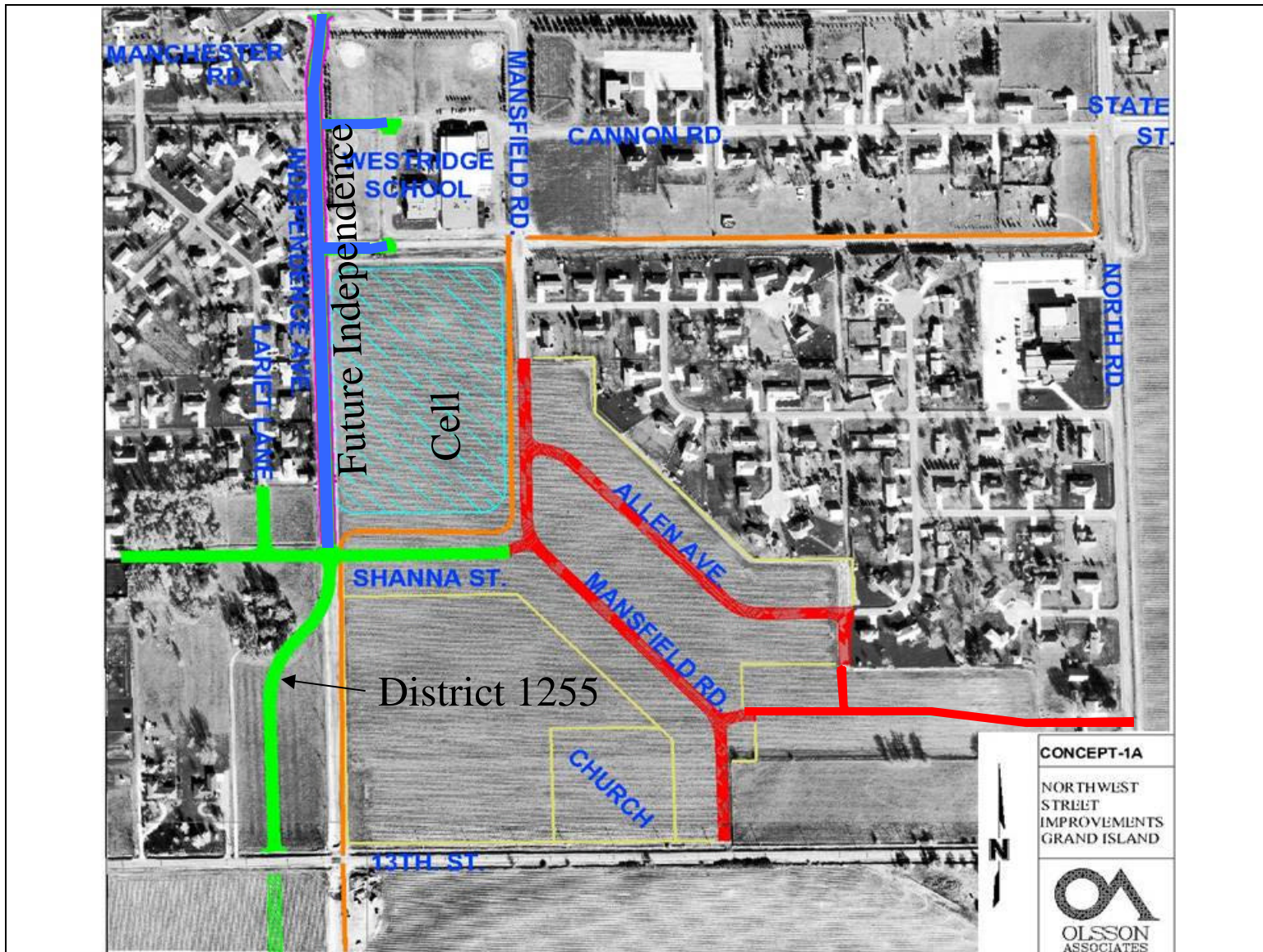
1. Make a motion to approve Amendment No. 3 to the agreement with Olsson Associates.
2. Refer the issue to a Committee.
3. Postpone the issue to future date.
4. Take no action on the issue.

## **Recommendation**

City Administration recommends that the Council pass a resolution authorizing the Mayor to execute the Amendment to the Agreement.

## **Sample Motion**

Approve Amendment No. 3 to the Agreement with Olsson Associates for Consulting Engineering Services on the Westridge Detention Cell





**OLSSON ASSOCIATES**  
ENGINEERS • PLANNERS • SCIENTISTS • SURVEYORS

### 3rd AMENDMENT TO CONTRACT FOR ENGINEERING SERVICES

THIS AMENDMENT TO LETTER AGREEMENT, made as of the 20th day of September 2005, by and between the City of Grand Island, Nebraska (Client) and Olsson Associates (OA), WITNESSETH, That whereas the Client intends to complete the Design Modifications and Construction Management for which services were provided under the contract between the City of Grand Island and Olsson Associates dated 23 October 2001, amended 11 June 2002 and 8 March 2005. Fees for the Design Modifications on the Westridge Detention Cell and Construction Administration Services for the Project are hereby added to the agreement in accordance with the letter of agreement and Phases IV & VI, of Exhibit A. Said Additional Services shall be provided as set forth in the Letter Agreement.

#### **Scope of Services:**

1. OA has acquainted itself with the information provided by Client relative to the Project and based upon such information, offers to provide the services described for the Project.

The Scope of Services will include:

#### **Phase IV: Design Services**

- OA will coordinate with the Representatives of the City of Grand Island in the development of the design modifications and construction services of the detention cell.
- OA shall complete the design modifications of the proposed Westridge Detention Cell upon the selection of the preferred option by the City and accepted by the Grand Island School District.
- OA shall prepare detailed drawings and contract documents completely describing the items of work required for the construction of the detention Cell. Construction Plans and Contract Documents will be submitted to the City for review and approval.

#### **Phase VI: Construction Services**

The Scope of Services as outlined in Phase VI of Exhibit "A" shall include construction staking, construction observation, material testing, and contract administration for construction of Westridge Detention Cell. This work shall also include shop drawing review, and preparation of record drawings following completion of construction.

## **Compensation**

### 1. Estimated Fee:

Design Modifications	\$10,940
Construction Staking	\$5,160
Construction Administration	\$5,275
Construction Observation	\$13,395
Construction Testing	\$1,750

Fees are based on our Direct Labor Costs times a factor of 2.5 for services rendered by our principals, and employees engaged directly on the Project, not to exceed the maximum limits stated above.

### 2. Billings will be submitted and payable monthly in accordance with the original agreement.

## **SCHEDULE FOR OA'S SERVICES:**

Unless otherwise agreed, OA would expect to begin performing its services under this Agreement promptly upon your signing.

Anticipated Start Date: October 1, 2005

Anticipated Completion Date: July 30, 2006

Accepted this \_\_\_\_\_ day of

\_\_\_\_\_, 2005

**OLSSON ASSOCIATES**

By   
Kevin L. Prior

Vice President

**CITY OF GRAND ISLAND**

By \_\_\_\_\_  
Jay Vavricek

Title Mayor

ATTEST:

APPROVED AS TO FORM:

By \_\_\_\_\_  
RaNae Edwards

\_\_\_\_\_  
Doug Walker

Title City Clerk

Title City Attorney

G:\Office\PROPOSAL\Grand Island\IndependenceAve\Construction\westridge Detention Cell Design09-2005.doc

Date: 19-Sep-05  
Job: Independence-Const. Management  
File: F:\Office\Proposal\Grandstand\Independence\Construction\Westridge\DetentionConst05-05

Phase/ Task	Description of Work	TOTAL MAN- DAYS	LABOR (Hrs)										EXPENSES (\$)										TOTAL EXPENSE FEE	TOTAL FEE	
			Team Leader	Senior Eng.	Project Eng.	Assoc. Eng.	Assist. Eng.	Reg. Surv.	Sr. Tech.	Assoc. Surv.	Assoc. Tech.	Assist. Surv.	Assist. Tech.	Team Coord.	Testing Fee	Travel	Meals	Survey Supplies	Prints	Copies	Tele.	Misc			
1	Construction Staking																								
a.	Re-establish Horiz. & Vert. Control	1.00			2.0			2.0		2.0	4.0												\$514.00	\$514.00	
b.	Locate Pits & Prop Corners	1.00						4.0		4.0				40									\$356.00	\$356.00	\$40.00
c.	Sake-out Box Culvert	0.00																					\$0.00	\$0.00	
d.	Stake Storm Sewer & Inlets	1.00								4.0	4.0			20									\$356.00	\$356.00	\$20.00
e.	Sidewalk Stake-out	4.25						2.0		16.0	16.0			80.0			225.0			5.0	10		\$1,580.00	\$320.00	\$1,900.00
f.	Grade Stakes - Subbase	0.00																					\$0.00	\$0.00	
g.	Blue Tops	4.25						2.0		16.0	16.0			80.0			200.0			5.0	10		\$1,580.00	\$295.00	\$1,875.00
																							\$4,386.00	\$675.00	\$5,061.00
2	Design																								
h.	Design Modifications	8.50		4.0			24.0		40.0														\$4,188.00	\$0.00	\$4,188.00
i.	meeting with City - Concepts	2.00		8.0	8.0																		\$1,680.00	\$0.00	\$1,680.00
j.	revise concepts	2.50					4.0		16.0														\$1,100.00	\$0.00	\$1,100.00
k.	Landscaping Plan	6.75		2.0			12.0		40.0														\$3,124.00	\$0.00	\$3,124.00
l.	Contract Documents & specifications	1.50		2.0	4.0							6.0											\$870.00	\$0.00	\$870.00
	Sub-total	32.75	0.0	16.0	14.0	0.0	40.0	6.0	96.0	42.0	42.0	0.0	6.0	0.0	220.0	0.0	425.0	0.0	0.0	10.0	20.0		\$10,942.00	\$0.00	\$10,942.00
2	Construction Administration																								
a.	PreConstruction Meeting	1.50		2.0		4.0			4.0				2.0						5				\$846.00	\$10.00	\$856.00
b.	Public Involvement	0.00																					\$0.00	\$0.00	\$0.00
c.	Monthly Progress Meetings	0.00																					\$0.00	\$0.00	\$0.00
d.	Monthly Pay Requests	1.75		2.0		6.0			4.0				2.0						5				\$1,000.00	\$5.00	\$1,005.00
e.	Coordinate Material Testing	0.50				2.0			2.0														\$258.00	\$0.00	\$258.00
f.	Clarification of Plans & Specs	1.13		1.0		6.0							2.0						5.0	5.0			\$672.00	\$15.00	\$687.00
g.	Traffic Control Plans	0.00																					\$0.00	\$0.00	\$0.00
h.	Review Shop Drawing Submittals	1.25				8.0			2.0				2.0						5.0	5.0	5		\$706.00	\$15.00	\$721.00
i.	Process Change Orders	0.88		1.0		4.0							2.0						5.0		5		\$518.00	\$10.00	\$528.00
j.	Final Walk Through - Punch List	1.00		2.0		2.0			2.0				2.0		10.0				5.0				\$603.00	\$15.00	\$618.00
k.	Record Drawings	1.25				2.0			8.0									10.0	10.0	5.0	20		\$570.00	\$45.00	\$615.00
	Sub-total	9.25	0.0	8.0	0.0	34.0	0.0	0.0	20.0	0.0	200.0	0.0	12.0	0.0	10.0	0.0	0.0	20.0	40.0	15.0	30.0		\$5,158.00	\$115.00	\$5,273.00
3	Construction Observation																								
a.	On-Site Observation & Mat. Tests	30.50		4.0		40.0				200.0					325			10	20	30	50		\$12,960.00	\$435.00	\$13,395.00
b.	Testing - Proctors - 2	0.00																					\$0.00	\$350.00	\$350.00
c.	Testing - Densities-30	0.00																					\$0.00	\$750.00	\$750.00
d.	ing - Conc. Cylinders, Slump & Air - 10	0.00																					\$0.00	\$650.00	\$650.00
e.	Testing Aggregate Gradations - 2	0.00																					\$0.00	\$0.00	\$0.00
f.	Testing - Asphalt	0.00																					\$0.00	\$0.00	\$0.00
	Sub-total	30.50	0.0	4.0	0.0	40.0	0.0	0.0	0.0	200.0	0.0	0.0	0.0	1750.0	325.0	0.0	0.0	10.0	20.0	30.0	50.0		\$12,960.00	\$2,185.00	\$15,145.00
	GRAND TOTAL ALL SERVICES	72.50	0.00	28.00	14.00	74.00	40.00	6.00	116.00	42.00	200.00	42.00	0.00	18.00	1750.00	555.00	0.00	425.00	30.00	60.00	55.00	100.00	\$29,060.00	\$2,300.00	\$31,360.00

RESOLUTION 2005-276

WHEREAS, on October 23, 2001, by Resolution 2001-296, the City Council for the City of Grand Island awarded the proposal for conceptual engineering design work on street and safety improvements in the northwest area of Grand Island to Olsson Associates of Grand Island, Nebraska; and

WHEREAS, such work including the design services related to the construction of the Westridge Detention Cell and the extension of Independence Avenue from Manchester Avenue to 13<sup>th</sup> Street; and

WHEREAS, it is suggested that the City proceed with the planning and design of improvements to the Westridge Detention Cell which will include drainage channel improvements, sprinkler system, landscaping, etc.; and

WHEREAS, due to Olsson Associates' knowledge and experience working on this project, it is recommended that they continue providing engineering work to final completion of the project; and

WHEREAS, Olsson Associates is willing to perform design engineering and construction observation work on the detention cell for this phase of the project at a cost not to exceed \$36,520; and

WHEREAS, the Amendment to Contract for Engineering Services has been reviewed and approved by the City Attorney's office.

NOW, THEREFORE, BE IT RESOLVED BY THE MAYOR AND COUNCIL OF THE CITY OF GRAND ISLAND, NEBRASKA, that the Mayor be, and hereby is, authorized and directed to execute Amendment No. 3 to Contract for Engineering Services between the City of Grand Island and Olsson Associates to provide design engineering services and construction observation work on the Westridge Detention Cell for an amount not to exceed \$36,520.

- - -

Adopted by the City Council of the City of Grand Island, Nebraska on September 27, 2005.

---

RaNae Edwards, City Clerk

Approved as to Form	☐ _____
September 22, 2005	☐ City Attorney