



# **City of Grand Island**

**Tuesday, September 13, 2005**

**Council Session**

## **Item E6**

**Public Hearing Concerning Acquisition of Utility Easements  
(Heartland Events Center - Fonner Park)**

**Staff Contact: Gary R. Mader**

# **Council Agenda Memo**

**From:** Robert H. Smith, Asst. Utilities Director

**Meeting:** September 13, 2005

**Subject:** Acquisition of Utility Easements – Hall County  
Livestock Improvement Association – Heartland Events  
Center

**Item #'s:** E-6 & G-14

**Presenter(s):** Gary R. Mader, Utilities Director

## **Background**

Nebraska State Law requires that acquisition of property must be approved by City Council. The Utilities Department needs to acquire two easements relative to the property of the Hall County Livestock Improvement Association, located west of the southwest corner of the Heartland Events Center at Fonner Park, in the City Of Grand Island, Hall County, in order to have access to install, upgrade, maintain, and repair power appurtenances, including lines and transformers.

## **Discussion**

Fonner Park (Hall County Livestock Improvement Association) used a design/build concept to construct the new Heartland Events Center. The location of the electrical service was not known at the time of the property subdivision. That location is now known and crosses two lots, both owned by Fonner Park (Hall County Livestock Improvement Association).

These easements will be used to locate primary electrical cable and a pad-mounted transformer to provide electricity to the Heartland Events Center.

## **Alternatives**

It appears that the Council has the following alternatives concerning the issue at hand. The Council may:

1. Make a motion to approve
2. Refer the issue to a Committee
3. Postpone the issue to future date
4. Take no action on the issue

## **Recommendation**

City Administration recommends that the Council approve the resolution for the acquisition of the easements for one dollar (\$1.00) each.

## **Sample Motion**

Motion to approve acquisition of the Utility Easement s.

PART OF THE  
SW 1/4  
SEC. 22, T11N, R9W

PART OF THE  
SE 1/4  
SEC. 22, T11N, R9W

EXISTING 20'  
UTILITY EASEMENT  
DOC# 200411108

WESTERLY LINE - LOT 1,  
HEARTLAND EVENT  
CENTER 1st SUB.

POINT OF BEGINNING

SW CORNER - LOT 1,  
HEARTLAND EVENT  
CENTER 1st SUB.

SOUTHERLY LINE - LOT 1,  
HEARTLAND EVENT  
CENTER 1st SUB.

EASTERLY LINE-  
SW 1/4, SEC 22, T-11-N, R-9-W

EXISTING 20'  
UTILITY EASEMENT  
DOC# 200411108

EXISTING 20'  
UTILITY EASEMENT  
DOC# 200411108

EXISTING 15' EASEMENT  
MISC. BOOK BOOK 10, PG. 639

EXISTING 5' EASEMENT  
MISC. BOOK BOOK 10, PG. 641

LOT 1- HEARTLAND EVENT  
CENTER FIRST SUBDIVISION



NORTHERLY R-O-W LINE,  
STOLLEY PARK ROAD

**STOLLEY PARK ROAD**

SECTION LINE

1/4 SECTION CORNER  
SE CORNER, SW 1/4,  
SEC. 22, T-11-N, R-9-W

### LEGEND



INDICATES 20' WIDE  
UTILITY EASEMENT

CITY OF  
**GRAND ISLAND**  
UTILITIES DEPARTMENT

## EXHIBIT "A"

DRN BY: K.J.M.

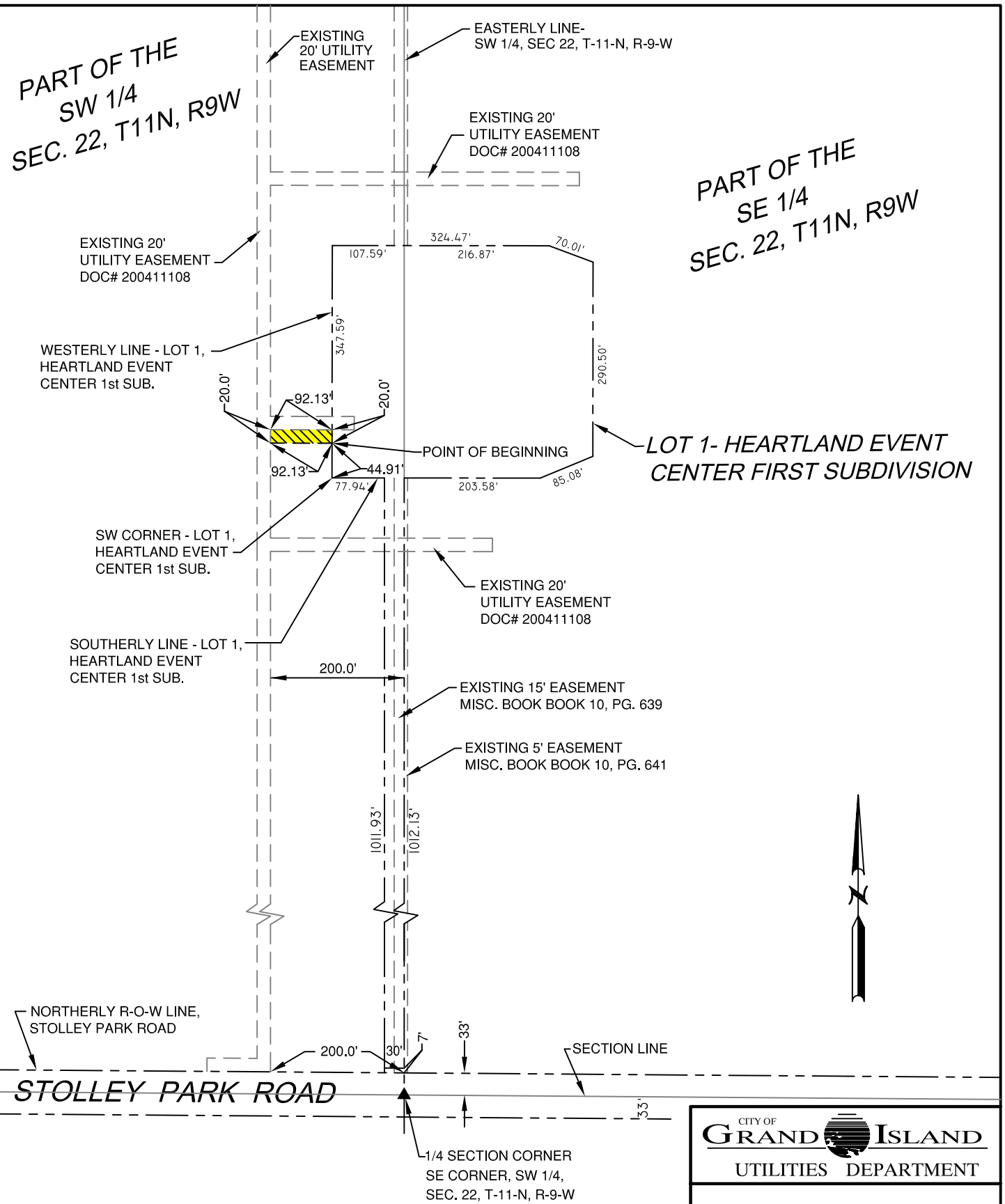
SCALE: 1"=200'

DATE: 8/16/2005

FILE: H.E.C.

PART OF THE  
SW 1/4  
SEC. 22, T11N, R9W

PART OF THE  
SE 1/4  
SEC. 22, T11N, R9W



# LEGEND

 INDICATES 20' WIDE  
UTILITY EASEMENT

CITY OF  
**GRAND ISLAND**  
UTILITIES DEPARTMENT

## EXHIBIT "A"

DRN BY: K.J.M.	SCALE: 1"=200'
DATE: 8/16/2005	FILE: SEC 22119