



# City of Grand Island

Tuesday, August 09, 2005

Council Session

## Item H2

**Consideration of Annexation Property Located South of Sandra Road and East of South Locust Street and Refer to the Regional Planning Commission**

Staff Contact: Chad Nabity

# Council Agenda Memo

**From:** Chad Nabity, AICP Hall County Regional Planning Director

**Meeting:** August 9, 2005

**Subject:** Annexation of Property South of Beverly Healthcare South

**Item #'s:** H-2

**Presenter(s):** Chad Nabity, AICP Hall County Regional Planning Director

## Background

A request has been received to consider annexation of property located south of Beverly Healthcare South on the west side of U.S. Highway 34 west of S. Locust Street. Beverly Healthcare is planning to expand their operations at this site to the south. This property is adjacent and contiguous with the Grand Island Municipal Limits.

## Discussion

Nebraska Revised Statute §16-117 provides for the process of annexation the first step of which is for the Mayor and City Council to refer the matter to the Regional Planning Commission for a recommendation. This will be followed by the process as outlined in the attached

## Alternatives

It appears that the Council has the following alternatives concerning the issue at hand. The Council may:

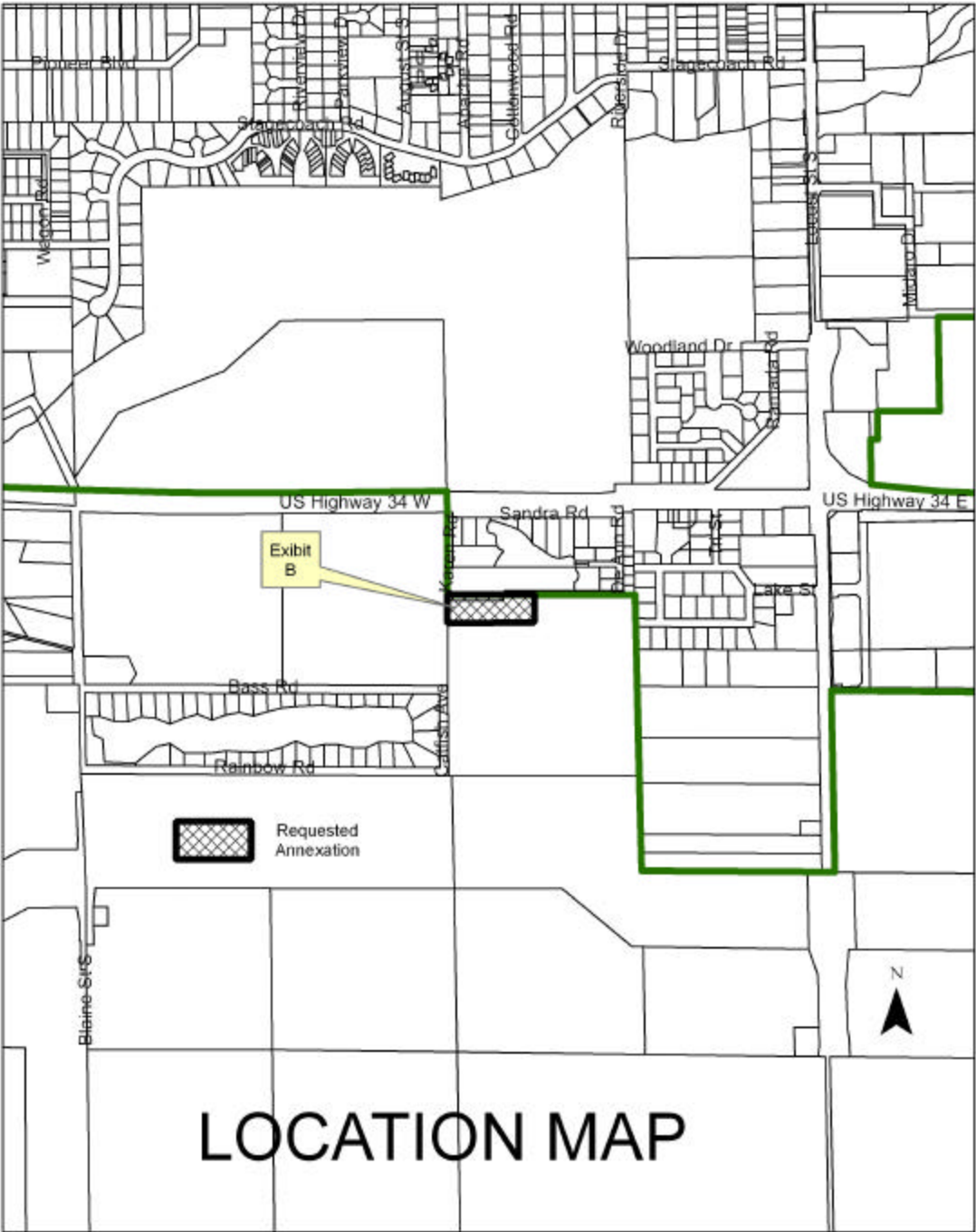
1. Refer the annexation request to the Hall County Regional Planning Commission
2. Choose not to refer the annexation request to the Hall County Regional Planning Commission
3. Table the issue

## **Recommendation**

City Administration recommends that the Council refer this request for annexation to the Hall County Regional Planning Commission for a recommendation.

## **Sample Motion**

Move to refer this request for annexation to the Hall County Regional Planning Commission for a recommendation.



**TIMELINE**  
**2005 Annexation**

- 08-09-2005 City Council Meeting. Referral of areas considered for annexation to Regional Planning Commission for hearing and recommendation.
- 08-27-2005 Notice of public hearing re: annexation published in *Grand Island Independent* for Regional Planning Commission meeting. [§19-929]
- 09-07-2005 Planning Commission Meeting. Commissioners to make recommendation on annexation of land into the City of Grand Island.
- 09-13-2005 City Council Meeting. Resolution indicates the city is (1) considering annexation, (2) approves and adopts the annexation plan, and (3) scheduling a public hearing for October 13, 2005. Annexation plan for extension of city services to be on file with the City Clerk. [§16-117]
- 09-13-2005 Annexation Plan for the extension of city services to the annexed area to be on file with the City Clerk for public review and inspection during regular business hours.
- 09-14-2005 Upon approval of resolution on 9/13/05, City Clerk sends copy of resolution to the school board of the school district in the land proposed for annexation.
- 09-27-2005 Notice of Public Hearing before City Council to be published in the *Grand Island Independent*. Notice must be published at least once, not less than 10 days prior to date of hearing.
- 10-13-2005 Public Hearing re: annexation.  
Title of ordinance to be read at council meeting. (1st time) [§16-404]
- 10-25-2005 Title of ordinance to be read at council meeting. (2nd time)
- 11-8-2005 Title of ordinance to be read at council meeting. (3rd time)  
Annexation Ordinance approved by City Council.
- 11-23-2005 Annexation Ordinance becomes effective.