



# City of Grand Island

Tuesday, June 28, 2005

Council Session

## Item E3

**Public Hearing on Acquisition of Utility Easements - 3114 and  
3116 S. Blaine Street - Gauthier**

Staff Contact: Gary R. Mader

# **Council Agenda Memo**

**From:** Robert H. Smith, Asst. Utilities Director  
**Meeting:** June 28, 2005  
**Subject:** Acquisition of Utility Easements – 3114 & 3116 S. Blaine Street - Gauthier  
**Item #'s:** E-3 & G-6  
**Presenter(s):** Gary R. Mader, Utilities Director

## **Background**

Nebraska State Law requires that acquisition of property must be approved by City Council. The Utilities Department needs to acquire two easements relative to the property of Clark A. Gauthier located through a part of Lot Four (4), and part of Lot Five (5) Riverside Farm Fourth Subdivision (3116 and 3114 S. Blaine Street), in the City of Grand Island, Hall County, in order to have access to install, upgrade, maintain, and repair power appurtenances, including lines and transformers.

## **Discussion**

These easements will be used to locate underground primary and pad-mounted transformers to provide power to the new home on Lot Five (5), Riverside Farm Fourth Subdivision.

## **Alternatives**

It appears that the Council has the following alternatives concerning the issue at hand. The Council may:

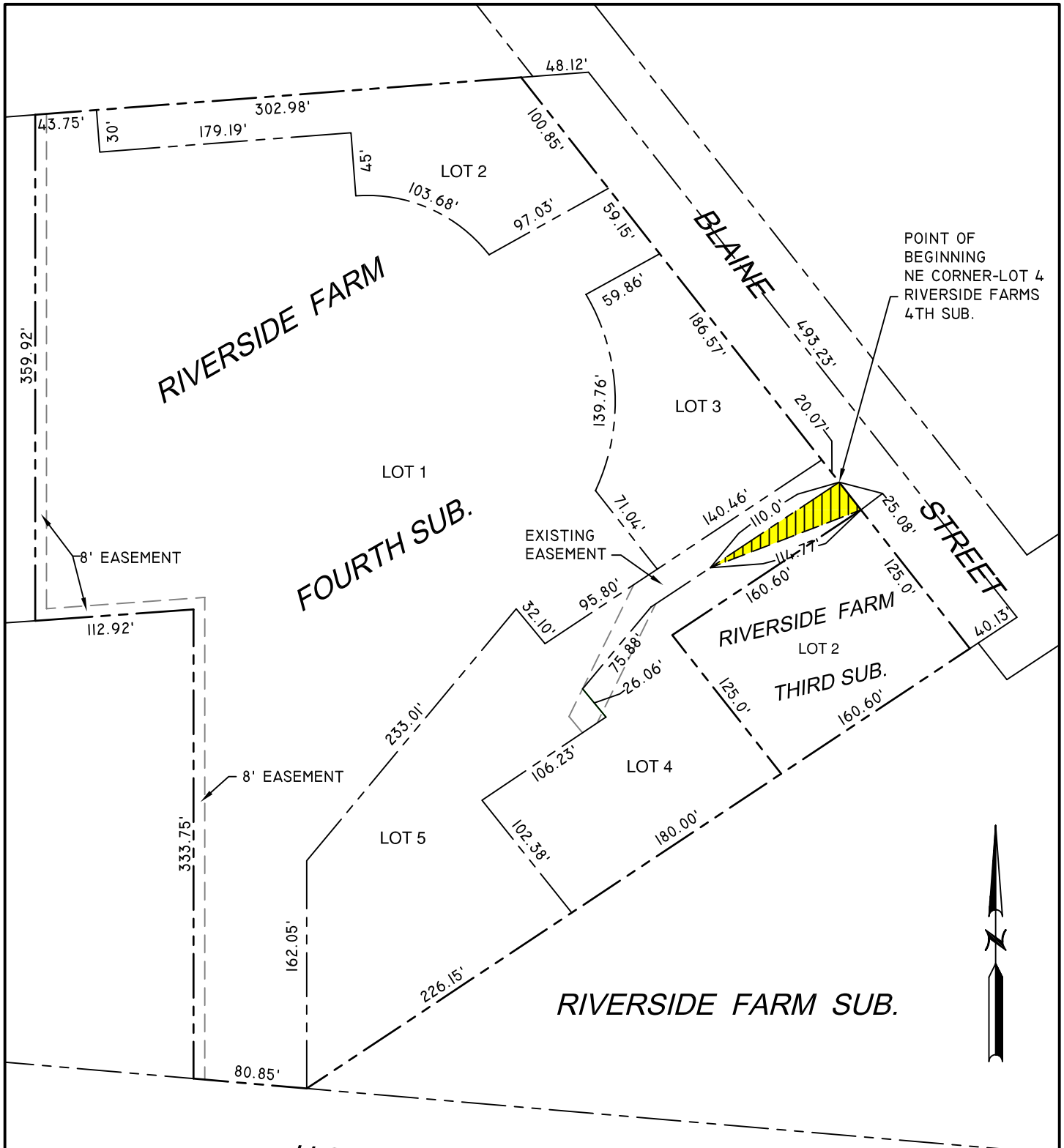
1. Make a motion to approve
2. Refer the issue to a Committee
3. Postpone the issue to future date
4. Take no action on the issue

## **Recommendation**


City Administration recommends that the Council approve the resolution for the acquisition of the easements for one dollar (\$1.00) each.

## **Sample Motion**

Motion to approve acquisition of the Utility Easements.



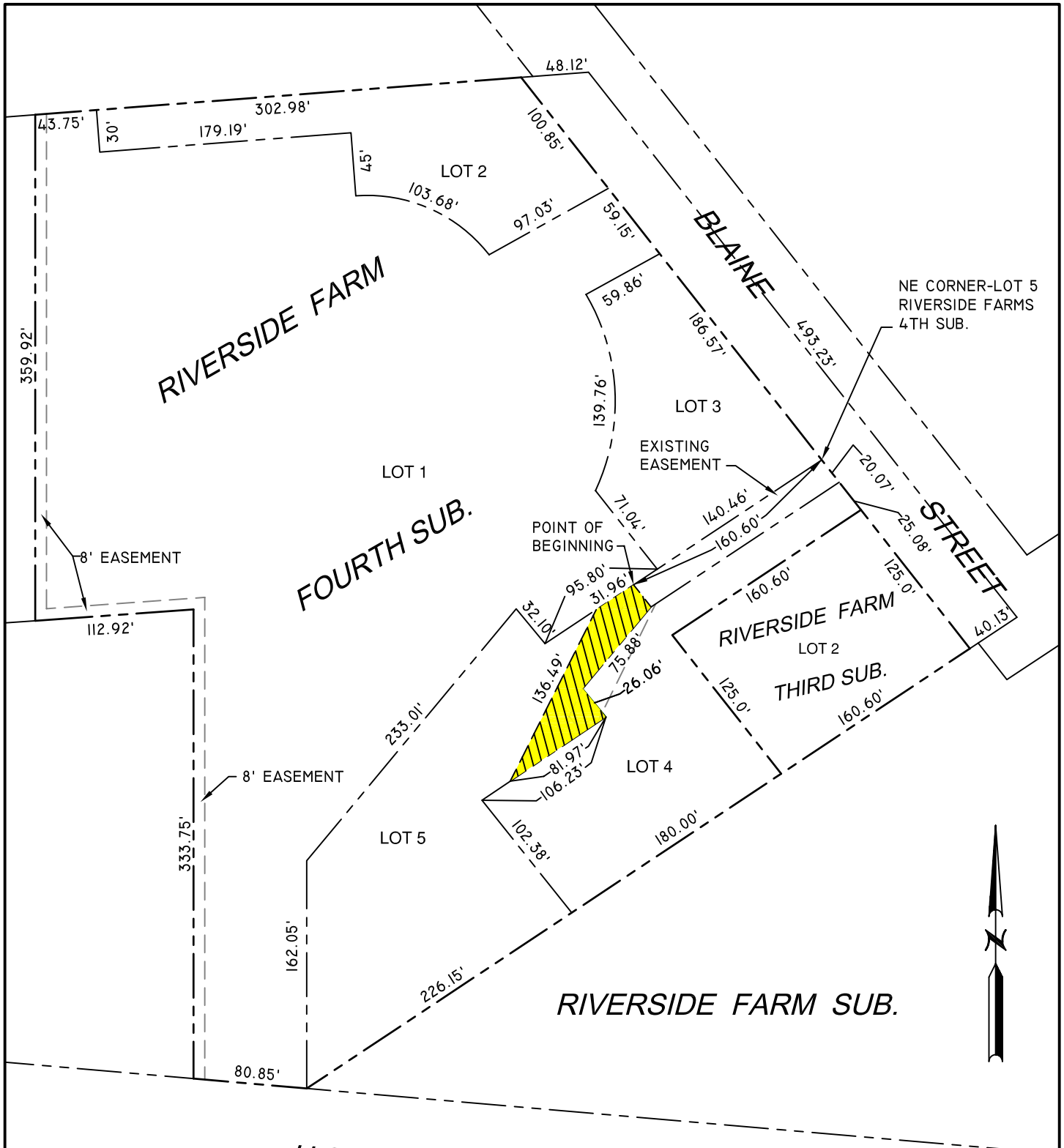
U.S. HWY 34

**LEGEND**  
 INDICATES UTILITY EASEMENT

CITY OF  
**GRAND ISLAND**  
 UTILITIES DEPARTMENT

**EXHIBIT "A"**

DRN BY: K.J.M.	SCALE: 1"= 100'
DATE: 5/25/2005	FILE: RIVERSIDE



U.S. HWY 34

LEGEND



INDICATES  
UTILITY EASEMENT

CITY OF  
**GRAND ISLAND**  
UTILITIES DEPARTMENT

**EXHIBIT "A"**

DRN BY: K.J.M.	SCALE: 1"= 100'
DATE: 5/25/2005	FILE: RIVERSIDE