



City of Grand Island

Tuesday, December 21, 2004

Council Session

Item E4

**Public Hearing on Acquisition of Utility Easement - Northeast
Corner of Gregory Avenue and Shady Bend Road - Widdifield**

Staff Contact: Gary R. Mader

Council Agenda Memo

From: Robert H. Smith, Asst. Utilities Director
Meeting: December 21, 2004
Subject: Acquisition of Utility Easement – Northeast Corner of Gregory Avenue and Shady Bend Road
Item #'s: E-4 & G-13
Presenter(s): Gary R. Mader, Utilities Director

Background

Nebraska State Law requires that acquisition of property must be approved by City Council. The Utilities Department needs to acquire an easement relative to the property of Robert and Lynn E. Flint Widdifield, located at the northeast corner of Gregory Avenue and Shady Bend Road in the City Of Grand Island, Hall County, in order to have access to install, upgrade, maintain, and repair power appurtenances, including lines and transformers.

Discussion

This easement will be used to locate a single phase pad-mounted transformer and primary cable to serve electricity to a new home.

Alternatives

It appears that the Council has the following alternatives concerning the issue at hand. The Council may:

1. Make a motion to approve.
2. Refer the issue to a Committee
3. Postpone the issue to future date
4. Take no action on the issue

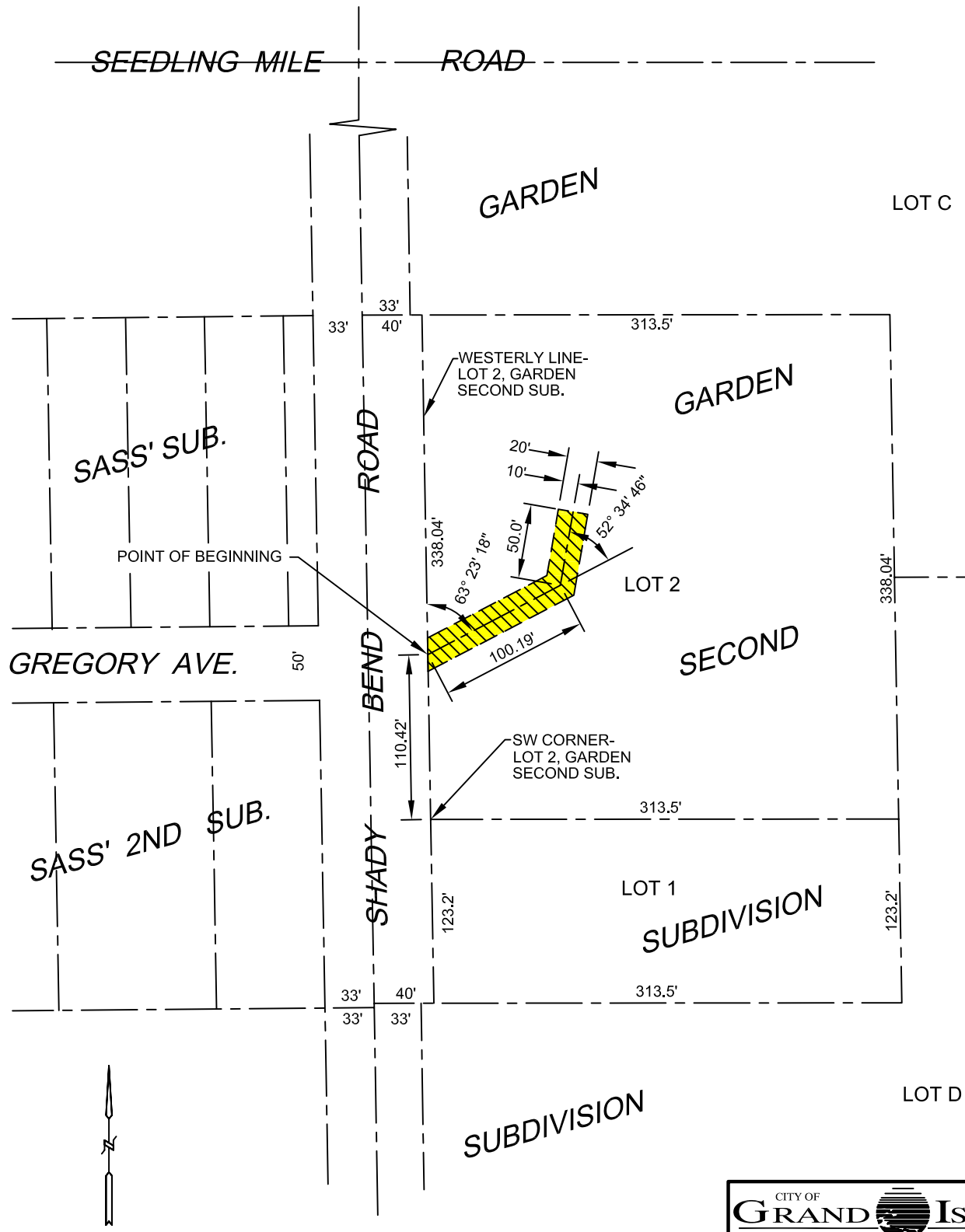
Recommendation

City Administration recommends that the Council approve the resolution for the acquisition of the easement for one dollar (\$1.00).


Sample Motion

Motion to approve acquisition of the Utility Easement.

SEEDLING MILE ROAD



LEGEND

 INDICATES 20' WIDE UTILITY EASEMENT

CITY OF
GRAND ISLAND
UTILITIES DEPARTMENT

EXHIBIT "A"

DRN BY: K.J.M.	SCALE: 1" = 100'
DATE: 12/10/04	FILE: GARDEN