



# City of Grand Island

Tuesday, October 12, 2004

Council Session

## Item G16

**#2004-256 - Approving Acquisition of Four (4) Public Utility Easements Along the Properties of 3917 & 3923 Partridge Circle and 1609 & 1615 Meadow Road (Little B's Corporation)**

*This item relates to the aforementioned Public Hearing Item E-3.*

Staff Contact: Steven P. Riehle, P.E., Public Works Director

R E S O L U T I O N    2004-256

WHEREAS, drainage easements are required by the City of Grand Island, from Little B's Corporation, a Nebraska corporation, to install, upgrade, maintain, and repair public utilities and appurtenances; and

WHEREAS, a public hearing was held on October 12, 2004, for the purpose of discussing the proposed acquisition of easements through a part of Lots Eight (8), Nine (9), Twelve (12) and Thirteen (13), Summerfield Estates Fourth Subdivision located in the city of Grand Island, Hall County, Nebraska, the easements being more particularly described as follows:

Tract No. 1:

The North 10.00 feet of Lot 8, Block 3 of said Summerfield Estates Fourth Subdivision. Said permanent drainage easement contains 1,573.78 square feet or 0.036 acres more or less, as shown on the drawing attached hereto as Exhibit "A1".

Tract No. 2:

The South 10.00 feet of Lot 9, Block 3 of said Summerfield Estates Fourth Subdivision. Said permanent drainage easement contains 1,585.44 square feet or 0.036 acres more or less, as shown on the drawing attached hereto as Exhibit "A2".

Tract No. 3:

The Northerly 10.00 feet of Lot 12, Block 3 of said Summerfield Estates Fourth Subdivision. Said permanent drainage easement contains 1,345.11 square feet or 0.031 acres more or less, as shown on the drawing attached hereto as Exhibit "A3".

Tract No. 4:

The Southerly 10.00 feet of Lot 13, Block 3 of said Summerfield Estates Fourth Subdivision. Said permanent drainage easement contains 1,383.69 square feet or 0.032 acres more or less, as shown on the drawing attached hereto as Exhibit "A4".

NOW, THEREFORE, BE IT RESOLVED BY THE MAYOR AND COUNCIL OF THE CITY OF GRAND ISLAND, NEBRASKA, that the City of Grand Island be, and hereby is, authorized to acquire drainage easements from Little B's Corporation, a Nebraska corporation, on the above-described tracts of land.

- - -

Adopted by the City Council of the City of Grand Island, Nebraska, October 12, 2004.

---

Approved as to Form <input type="checkbox"/> _____ October 7, 2004 <input type="checkbox"/> City Attorney
--

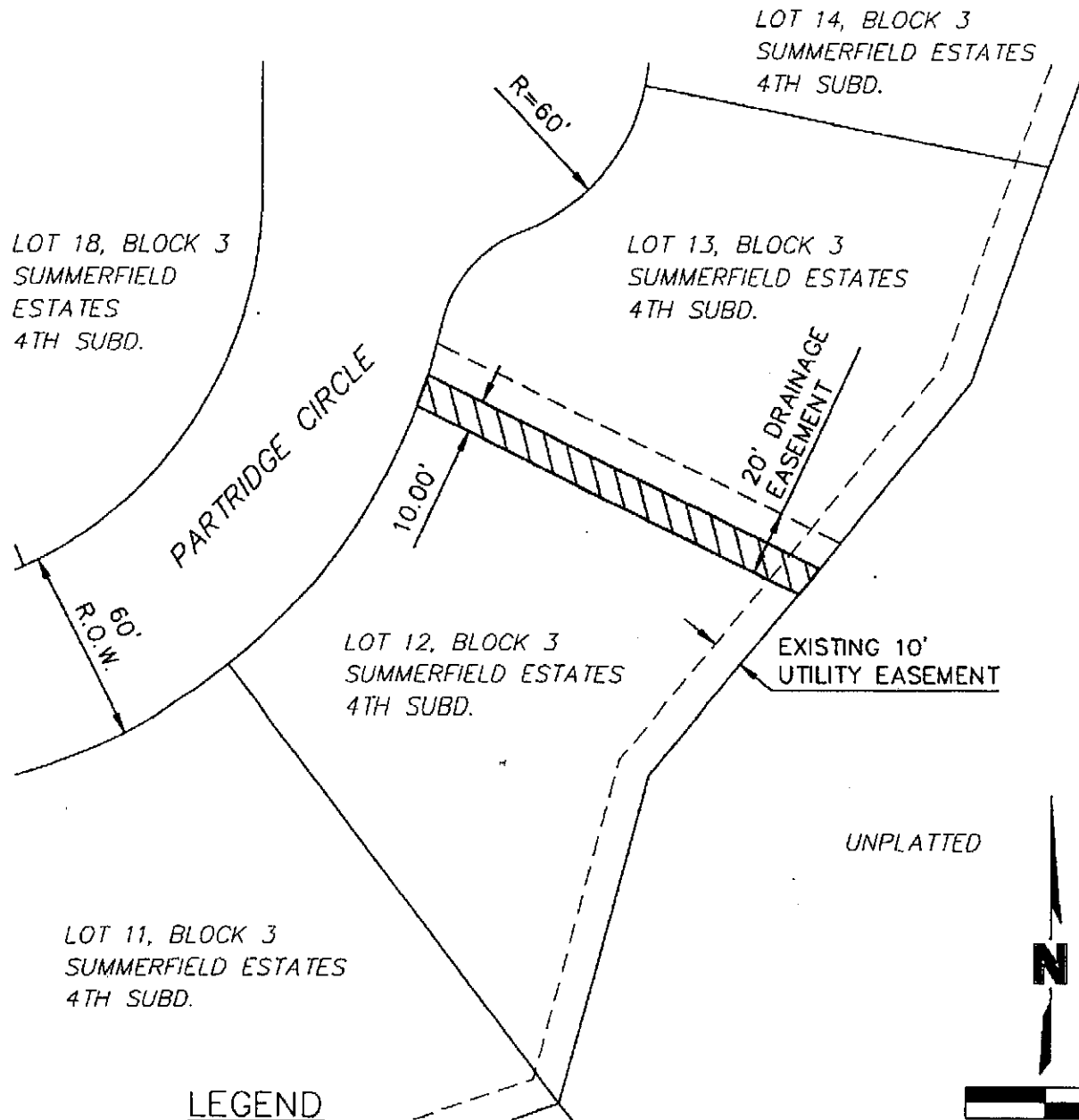
RaNae Edwards, City Clerk

## 04 12003-0483

OA #2003-0463

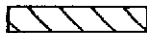
# DRAINAGE EASEMENT

PART OF LOT 12, BLOCK 3  
SUMMERFIELD ESTATES FOURTH SUBDIVISION  
CITY OF GRAND ISLAND



## LEGEND

DRAINAGE EASEMENT



## EASEMENT DESCRIPTION

A PERMANENT DRAINAGE EASEMENT CONSISTING OF THE PART OF LOT 12, BLOCK 3 OF SUMMERFIELD 4TH SUBDIVISION LOCATED IN THE SOUTHWEST QUARTER (SW1/4) OF SECTION 12, TOWNSHIP 11 NORTH, RANGE 10 WEST OF THE 6TH P.M., CITY OF GRAND ISLAND, HALL COUNTY, NEBRASKA AND MORE PARTICULARLY DESCRIBED AS FOLLOWS:

THE NORTHERLY 10.00 FEET OF LOT 12, BLOCK 3 OF SAID SUMMERFIELD 4TH SUBDIVISION. SAID PERMANENT DRAINAGE EASEMENT CONTAINS 1,345.11 SQUARE FEET OR 0.031 ACRES MORE OR LESS.

*Exhibit "A3"*

DRAINAGE  
EASEMENT

SUMMERFIELD ESTATES FOURTH SUBDIVISION  
PART OF LOT 12, BLOCK 3  
GRAND ISLAND, NE  
HALL COUNTY



OLSSON ASSOCIATES  
ENGINEERS - PLANNERS - SCIENTISTS - SURVEYORS

301 EAST 2ND STREET - GRAND ISLAND, NEBRASKA 68801 - 308-384-8750 - FAX 308-384-8753  
OMAHA DENVER LINCOLN PHOENIX HOLDREGE KANSAS CITY GRAND ISLAND SOUTH SIOUX CITY

DATE:  
AUGUST 2004

GA #2003-0463

PART OF LOT 13, BLOCK 3  
SUMMERFIELD ESTATES FOURTH SUBDIVISION  
CITY OF GRAND ISLAND



THE SOUTHERLY 10.00 FEET OF LOT 13, BLOCK 3 OF SAID SUMMERFIELD 4TH SUBDIVISION. SAID PERMANENT DRAINAGE EASEMENT CONTAINS 1,383.69 SQUARE FEET OR 0.032 ACRES MORE OR LESS.

Exhibit "A4"

DRAINAGE  
EASEMENT

SUMMERFIELD ESTATES FOURTH SUBDIVISION  
PART OF LOT 13, BLOCK 3  
GRAND ISLAND, NE  
HALL COUNTY



**OLSSON ASSOCIATES**  
ENGINEERS - PLANNERS - SCIENTISTS - SURVEYORS

201 EAST 2ND STREET - GRAND ISLAND, NEBRASKA 68801 - 308-384-8750 - FAX 308-384-8752  
DANNA DENVER LINCOLN PHOENIX HOLDSRICE KANSAS CITY GRAND ISLAND SOUTH SIOUX CITY

DATE:  
AUGUST 2004

CA #2003-0463