



City of Grand Island

Tuesday, October 12, 2004

Council Session

Item E4

**Public Hearing on the Acquisition of a Public Utility Easement
South of Capital Avenue and West of Diers Avenue (John R.
Menard)**

Staff Contact: Steven P. Riehle, P.E., Public Works Director

Council Agenda Memo

From: Steven P. Riehle, P.E., Director of Public Works

Meeting: October 12, 2004

Subject: Public Hearing and Approving Acquisition of a Public Utility Easement South of Capital Avenue and West of Diers Avenue (John R. Menard)

Item #'s: E-4 & G-17

Presenter(s): Steven P. Riehle, Director of Public Works

Background

Nebraska State Law states that acquisition of property must be approved by City Council. The Public Works Department needs to acquire a Public Utility Easement South of Capital Avenue and West of Diers Avenue.

Discussion

The Easement is needed in order to have access to install and maintain the necessary storm drainage. The property is owned by John R. Menard. The easement is needed for the storm sewer that the Wal Mart's contractor will build when paving Carlton Avenue.

Alternatives

It appears that the Council has the following alternatives concerning the issue at hand. The Council may:

1. Approve the acquisition of the Easement.
2. Disapprove or/Deny the acquisition of the Easement.
3. Modify the request to meet the wishes of the Council.
4. Table the issue.

Recommendation

City Administration recommends that the Council conduct a Public Hearing and approve acquisition of the Easement.

Sample Motion

Move to approve the acquisition of the Easement.

Storm Sewer Easement

HALL COUNTY, NEBRASKA

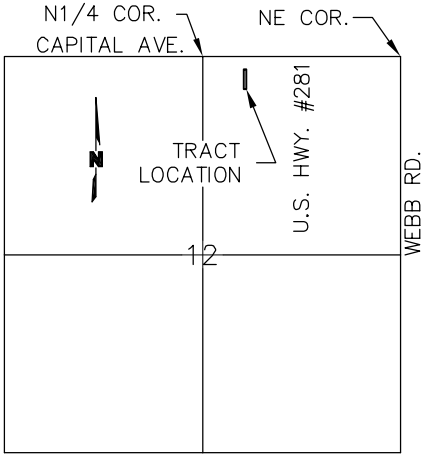
CITY OF GRAND ISLAND
PROPERTY

LEGEND

PERMANENT EASEMENT

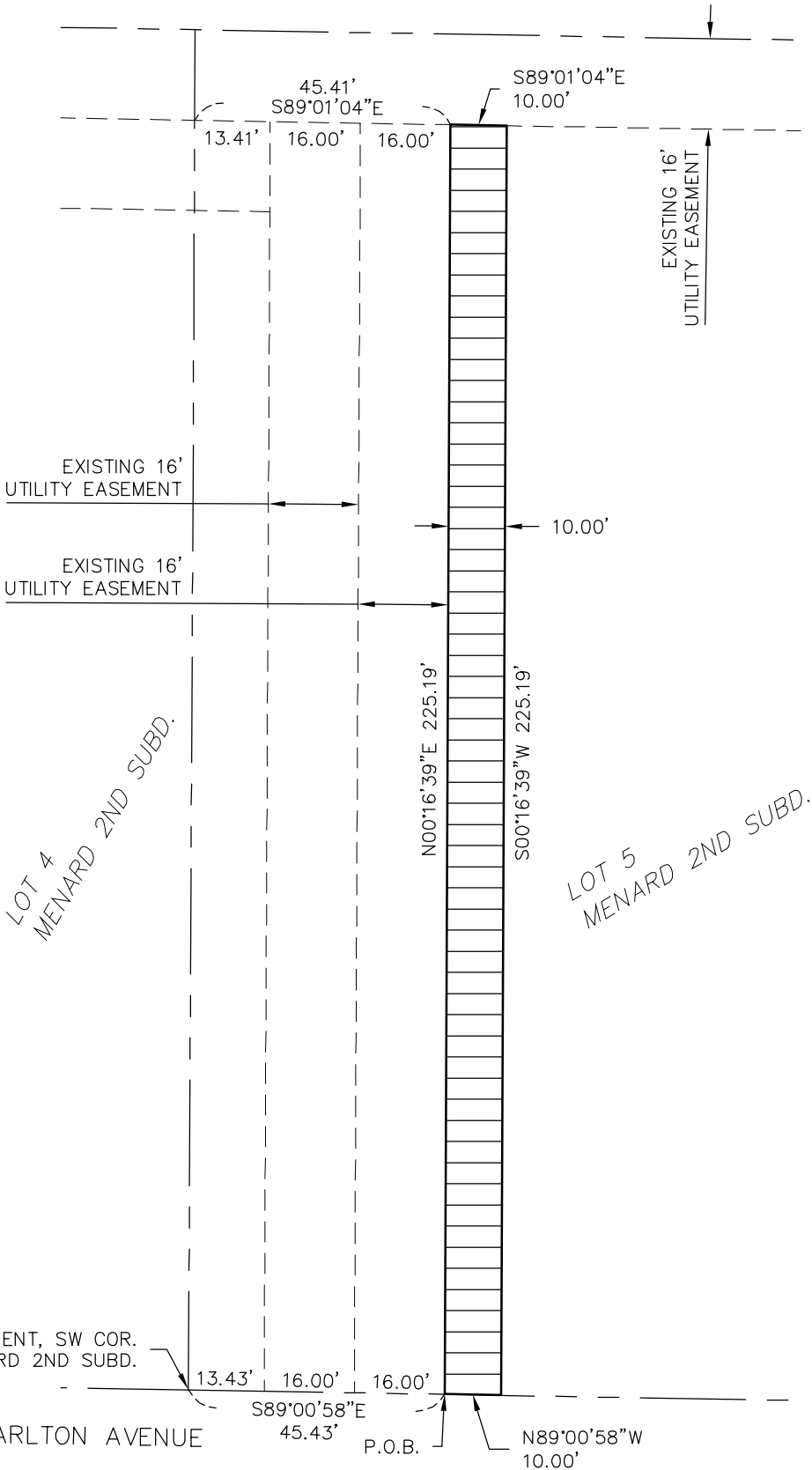


NOT TO SCALE



VICINITY MAP

NOT TO SCALE



STORM SEWER EASEMENT DESCRIPTION

A STORM SEWER EASEMENT CONSISTING OF PART OF LOT 5 OF MENARD SECOND SUBDIVISION, LOCATED IN THE NORTHEAST QUATER (NE1/4) OF SECTION 12, TOWNSHIP 11 NORTH, RANGE 10 WEST OF THE 6TH P.M., CITY OF GRAND ISLAND, HALL COUNTY, NEBRASKA AND MORE PARTICULARLY DESCRIBED AS FOLLOWS:

COMMENCING AT THE SOUTHWEST CORNER OF SAID LOT 5, SAID POINT ALSO BEING ON THE NORTH RIGHT-OF-WAY (R.O.W.) LINE OF CARLTON AVENUE; THENCE S89°00'58\"/>