



City of Grand Island

Tuesday, October 12, 2004

Council Session

Item E3

**Public Hearing on the Acquisition of Four (4) Public Utility
Easements Along the Properties of 3917 & 3923 Partridge Circle
and 1609 & 1615 Meadow Road (Little B's Corporation)**

Staff Contact: Steven P. Riehle, P.E., Public Works Director

Council Agenda Memo

From: Steven P. Riehle, P.E., Director of Public Works

Meeting: October 12, 2004

Subject: Public Hearing and Approving Acquisition of Four (4) Public Utility Easements Along the Properties of 3917 & 3923 Partridge Circle and 1609 & 1615 Meadow Road; (Little B's Corporation)

Item #'s: E-3 & G-16

Presenter(s): Steven P. Riehle, Director of Public Works

Background

Nebraska State Law states that acquisition of property must be approved by City Council. The Public Works Department needs to acquire a Public Utility Easement along the properties of 3917 & 3923 Partridge Circle and 1609 & 1615 Meadow Road.

Discussion

The Easement is needed in order to have access to maintain the necessary storm drainage.

Alternatives

It appears that the Council has the following alternatives concerning the issue at hand. The Council may:

1. Approve the acquisition of the Easement.
2. Disapprove or/Deny the acquisition of the Easement.
3. Modify the request to meet the wishes of the Council.
4. Table the issue.

Recommendation

City Administration recommends that the Council conduct a Public Hearing and approve acquisition of the Easement.

Sample Motion

Move to approve the acquisition of the Easement.

DRAINAGE EASEMENT

PART OF LOT 12, BLOCK 3
SUMMERFIELD ESTATES FOURTH SUBDIVISION
CITY OF GRAND ISLAND

LOT 14, BLOCK 3
SUMMERFIELD ESTATES
4TH SUBD.

LOT 18, BLOCK 3
SUMMERFIELD
ESTATES
4TH SUBD.

LOT 13, BLOCK 3
SUMMERFIELD ESTATES
4TH SUBD.

PARTRIDGE CIRCLE

LOT 12, BLOCK 3
SUMMERFIELD ESTATES
4TH SUBD.

EXISTING 10'
UTILITY EASEMENT

LOT 11, BLOCK 3
SUMMERFIELD ESTATES
4TH SUBD.

UNPLATTED

LEGEND

DRAINAGE EASEMENT



EASEMENT DESCRIPTION

A PERMANENT DRAINAGE EASEMENT CONSISTING OF THE PART OF LOT 12, BLOCK 3 OF SUMMERFIELD 4TH SUBDIVISION LOCATED IN THE SOUTHWEST QUARTER (SW1/4) OF SECTION 12, TOWNSHIP 11 NORTH, RANGE 10 WEST OF THE 6TH P.M., CITY OF GRAND ISLAND, HALL COUNTY, NEBRASKA AND MORE PARTICULARLY DESCRIBED AS FOLLOWS:

THE NORTHERLY 10.00 FEET OF LOT 12, BLOCK 3 OF SAID SUMMERFIELD 4TH SUBDIVISION. SAID PERMANENT DRAINAGE EASEMENT CONTAINS 1,345.11 SQUARE FEET OR 0.031 ACRES MORE OR LESS.

DRAINAGE
EASEMENT

SUMMERFIELD ESTATES FOURTH SUBDIVISION
PART OF LOT 12, BLOCK 3
GRAND ISLAND, NE
HALL COUNTY



OLSSON ASSOCIATES

ENGINEERS - PLANNERS - SCIENTISTS - SURVEYORS

201 EAST 2ND STREET - GRAND ISLAND, NEBRASKA 68801 - 308-384-8750 - FAX 308-384-8752
OMAHA DENVER LINCOLN PHOENIX HOLDREGE KANSAS CITY GRAND ISLAND SOUTH SIOUX CITY

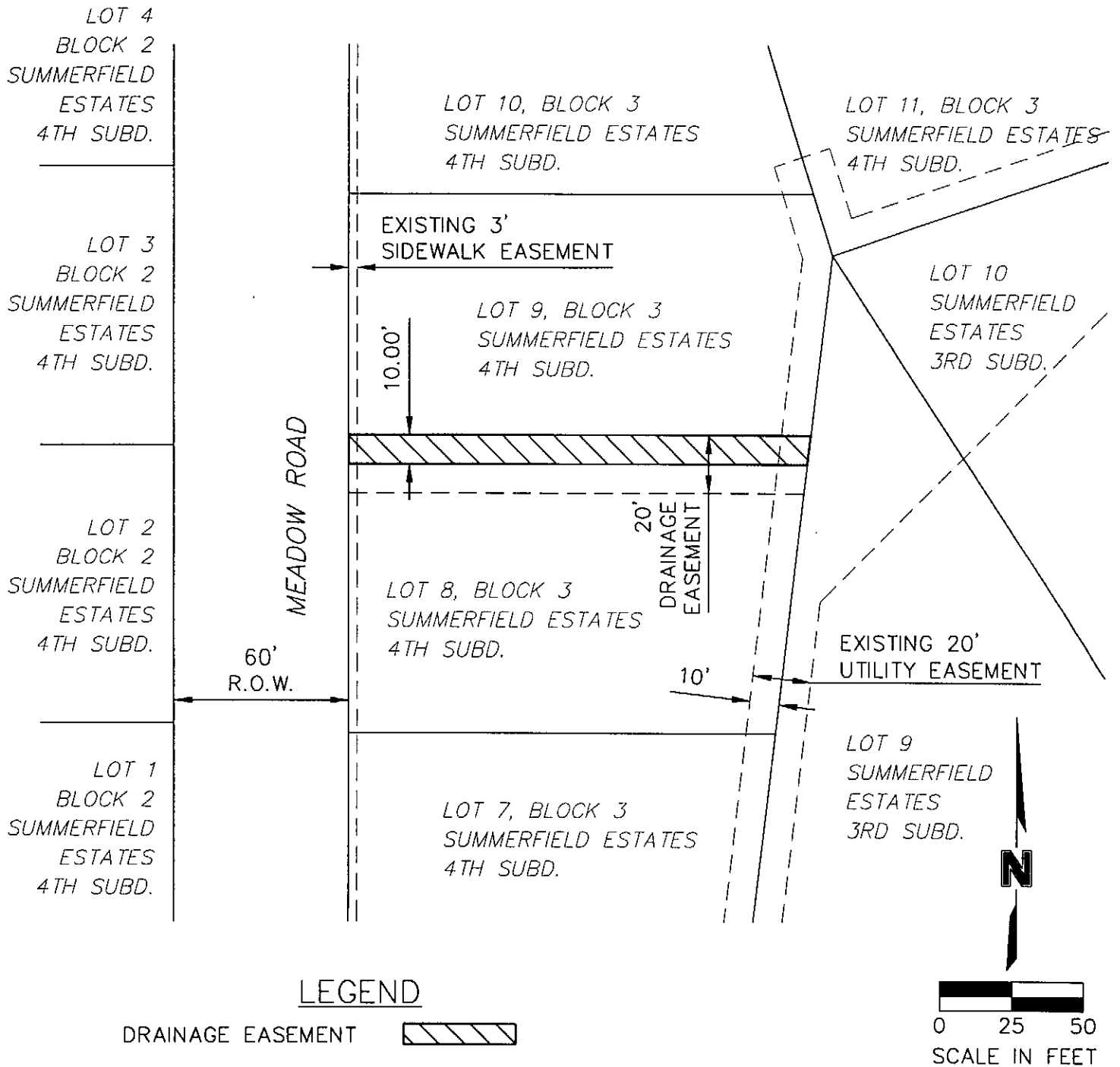
DATE:

AUGUST 2004

OA #2003-0463

DRAINAGE EASEMENT

PART OF LOT 9, BLOCK 3
SUMMERFIELD ESTATES FOURTH SUBDIVISION
CITY OF GRAND ISLAND



EASEMENT DESCRIPTION

A PERMANENT DRAINAGE EASEMENT CONSISTING OF THE PART OF LOT 9, BLOCK 3 OF SUMMERFIELD 4TH SUBDIVISION LOCATED IN THE SOUTHWEST QUARTER (SW1/4) OF SECTION 12, TOWNSHIP 11 NORTH, RANGE 10 WEST OF THE 6TH P.M., CITY OF GRAND ISLAND, HALL COUNTY, NEBRASKA AND MORE PARTICULARLY DESCRIBED AS FOLLOWS:

THE SOUTH 10.00 FEET OF LOT 9, BLOCK 3 OF SAID SUMMERFIELD 4TH SUBDIVISION. SAID PERMANENT DRAINAGE EASEMENT CONTAINS 1,585.44 SQUARE FEET OR 0.036 ACRES MORE OR LESS.

DRAINAGE
EASEMENT

SUMMERFIELD ESTATES FOURTH SUBDIVISION
PART OF LOT 9, BLOCK 3
GRAND ISLAND, NE
HALL COUNTY



OLSSON ASSOCIATES

ENGINEERS - PLANNERS - SCIENTISTS - SURVEYORS

201 EAST 2ND STREET - GRAND ISLAND, NEBRASKA 68801 - 308-384-8750 - FAX 308-384-8752
OMAHA DEWEY LINCOLN PHOENIX HOLDREGE KANSAS CITY GRAND ISLAND SOUTH SIOUX CITY

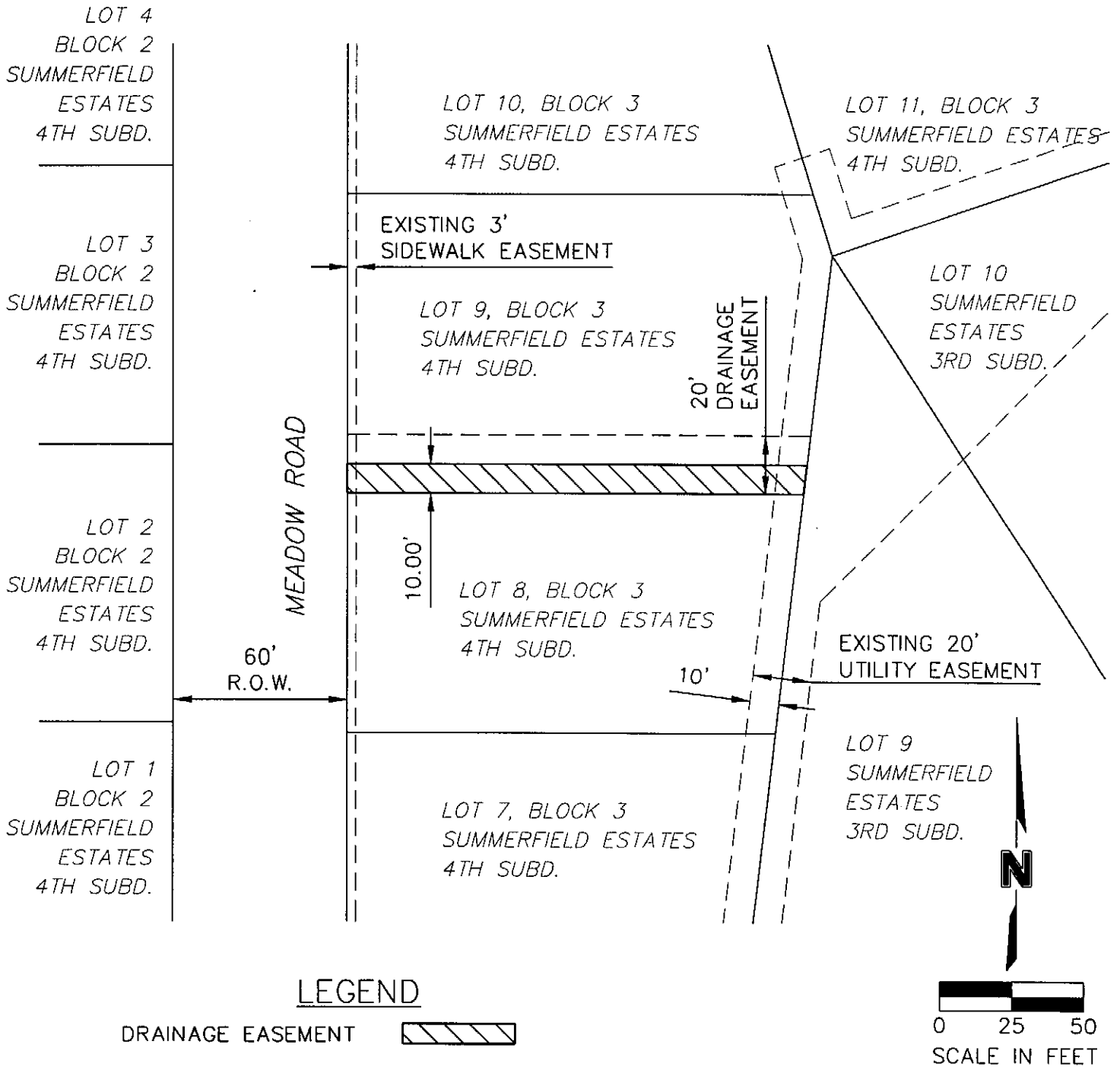
DATE:

AUGUST 2004

OA #2003-0463

DRAINAGE EASEMENT

PART OF LOT 8, BLOCK 3
SUMMERFIELD ESTATES FOURTH SUBDIVISION
CITY OF GRAND ISLAND



EASEMENT DESCRIPTION

A PERMANENT DRAINAGE EASEMENT CONSISTING OF THE PART OF LOT 8, BLOCK 3 OF SUMMERFIELD 4TH SUBDIVISION LOCATED IN THE SOUTHWEST QUARTER (SW1/4) OF SECTION 12, TOWNSHIP 11 NORTH, RANGE 10 WEST OF THE 6TH P.M., CITY OF GRAND ISLAND, HALL COUNTY, NEBRASKA AND MORE PARTICULARLY DESCRIBED AS FOLLOWS:

THE NORTH 10.00 FEET OF LOT 8, BLOCK 3 OF SAID SUMMERFIELD 4TH SUBDIVISION. SAID PERMANENT DRAINAGE EASEMENT CONTAINS 1,573.78 SQUARE FEET OR 0.036 ACRES MORE OR LESS.

DRAINAGE
EASEMENT

SUMMERFIELD ESTATES FOURTH SUBDIVISION
PART OF LOT 8, BLOCK 3
GRAND ISLAND, NE
HALL COUNTY



OLSSON ASSOCIATES

ENGINEERS - PLANNERS - SCIENTISTS - SURVEYORS

201 EAST 2ND STREET - GRAND ISLAND, NEBRASKA 68801 - 308-384-8750 - FAX 308-384-8752
OMAHA DENVER LINCOLN PHOENIX HOLDREGE KANSAS CITY GRAND ISLAND SOUTH SIOUX CITY

DATE:
AUGUST 2004

OA #2003-0463

DRAINAGE EASEMENT

PART OF LOT 13, BLOCK 3
SUMMERFIELD ESTATES FOURTH SUBDIVISION
CITY OF GRAND ISLAND

LOT 14, BLOCK 3
SUMMERFIELD ESTATES
4TH SUBD.

LOT 18, BLOCK 3
SUMMERFIELD
ESTATES
4TH SUBD.

LOT 13, BLOCK 3
SUMMERFIELD ESTATES
4TH SUBD.

LOT 12, BLOCK 3
SUMMERFIELD ESTATES
4TH SUBD.

LOT 11, BLOCK 3
SUMMERFIELD ESTATES
4TH SUBD.

PARTRIDGE CIRCLE

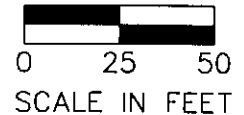
20' DRAINAGE
EASEMENT

EXISTING 10'
UTILITY EASEMENT

UNPLATTED

LEGEND

DRAINAGE EASEMENT



EASEMENT DESCRIPTION

A PERMANENT DRAINAGE EASEMENT CONSISTING OF THE PART OF LOT 13, BLOCK 3 OF SUMMERFIELD 4TH SUBDIVISION LOCATED IN THE SOUTHWEST QUARTER (SW1/4) OF SECTION 12, TOWNSHIP 11 NORTH, RANGE 10 WEST OF THE 6TH P.M., CITY OF GRAND ISLAND, HALL COUNTY, NEBRASKA AND MORE PARTICULARLY DESCRIBED AS FOLLOWS:

THE SOUTHERLY 10.00 FEET OF LOT 13, BLOCK 3 OF SAID SUMMERFIELD 4TH SUBDIVISION. SAID PERMANENT DRAINAGE EASEMENT CONTAINS 1,383.69 SQUARE FEET OR 0.032 ACRES MORE OR LESS.

DRAINAGE
EASEMENT

SUMMERFIELD ESTATES FOURTH SUBDIVISION
PART OF LOT 13, BLOCK 3
GRAND ISLAND, NE
HALL COUNTY



OLSSON ASSOCIATES
ENGINEERS - PLANNERS - SCIENTISTS - SURVEYORS

201 EAST 2ND STREET - GRAND ISLAND, NEBRASKA 68801 - 308-384-6750 - FAX 308-384-6752
OMAHA DENVER LINCOLN PHOENIX HOLDREGE KANSAS CITY GRAND ISLAND SOUTH SIOUX CITY

DATE:
AUGUST 2004
OA #2003-0463